

CAPRI SAILBOATS INC.
21200 VICTORY BLVD.
WOODLAND HILLS, CA

SCALE: *NONE*

APPROVED BY:

DRAWN BY

DATE: *1-23-84*

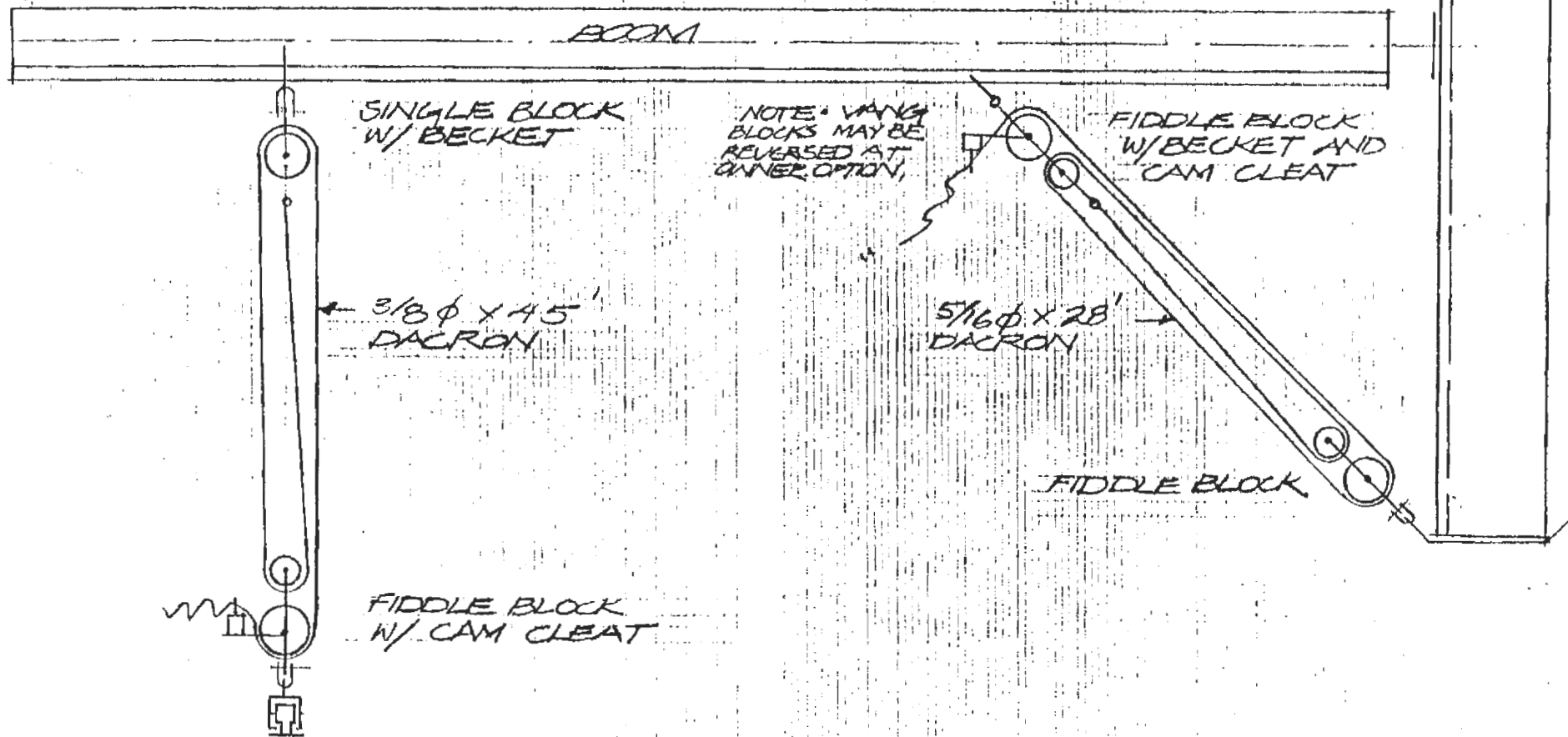
REVISED

BACKSTAY TENSIONER PURCHASE

CAPRI 22 - RACE PACKAGE.

DRAWING NUMBER

-0



MAIN SHEET 3:1

BOOM VANG 4:1
RACE PACKAGE ONLY

CAPRI SAILBOATS INC.
 21200 VICTORY BLVD.
 WOODLAND HILLS, CA

SCALE: NONE

APPROVED BY:

DRAWN BY

DATE: 1-24-84

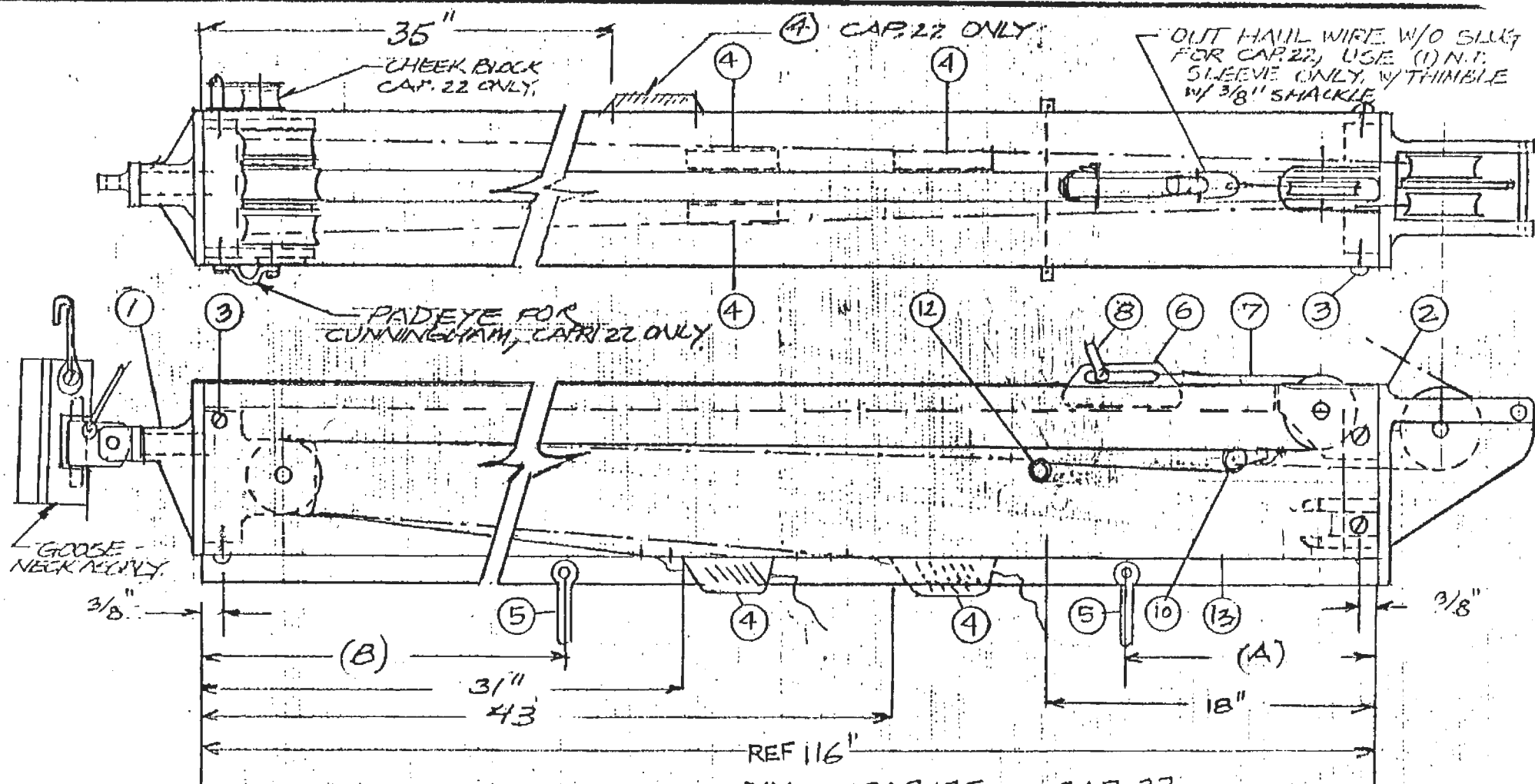
REVISED

MAINSHEET AND VANG ARRANGEMENT.

CAPRI 22

DRAWING NUMBER

-0



- 1 INBOARD BOOM END CASTING ASSEMBLY
- 2 OUTBOARD BOOM END CASTING ASSEMBLY
- 3 #10-3/4" P.H. S.M.S. - SS.
- 4 CLAM CLEAT WITH FAIR LEAD
- 5 'D' SHACKLE, LONG TYPE, S.S.
- 6 SLIDING OUT HAUL SLUG, ALUM. (CAP. 25 ONLY)
- 7 1/8" PLASTIC COATED WIRE NICO PRESS EYE
TO OUTHAUL SLUG, 18" LONG
- 8 STANDARD THUMB SCREW 'D' SHACKLE (CAP. 25 ONLY)
- 9
- 10 RWD BULLET BLOCK
- 12 2 5/8" X 1/4" S.S. PIN THRU BOTH WALLS AT GROOVE
- 13 LINE 1/4" X 20'-0" BRAIDED DACRON LINE (OUTHAUL)
- 14 LINE 1/4" X 25'-0" FOR AFT REEF (2) REQ'D

DIM.	CAP. 25	CAP. 22
A	12"	6"
B	27"	24"

CAPRI SAILBOATS INC
21200 VICTORY BLVD
WOODLAND HILLS, CA, 91367

SCALE: NONE

APPROVED BY:

DRAWN BY

DATE: 2-17-81

REVISED 2-18-85

BOOM ASSEMBLY

CAPRI 25/22 RACE PACKG.

DRAWING NUMBER
245-33004-7