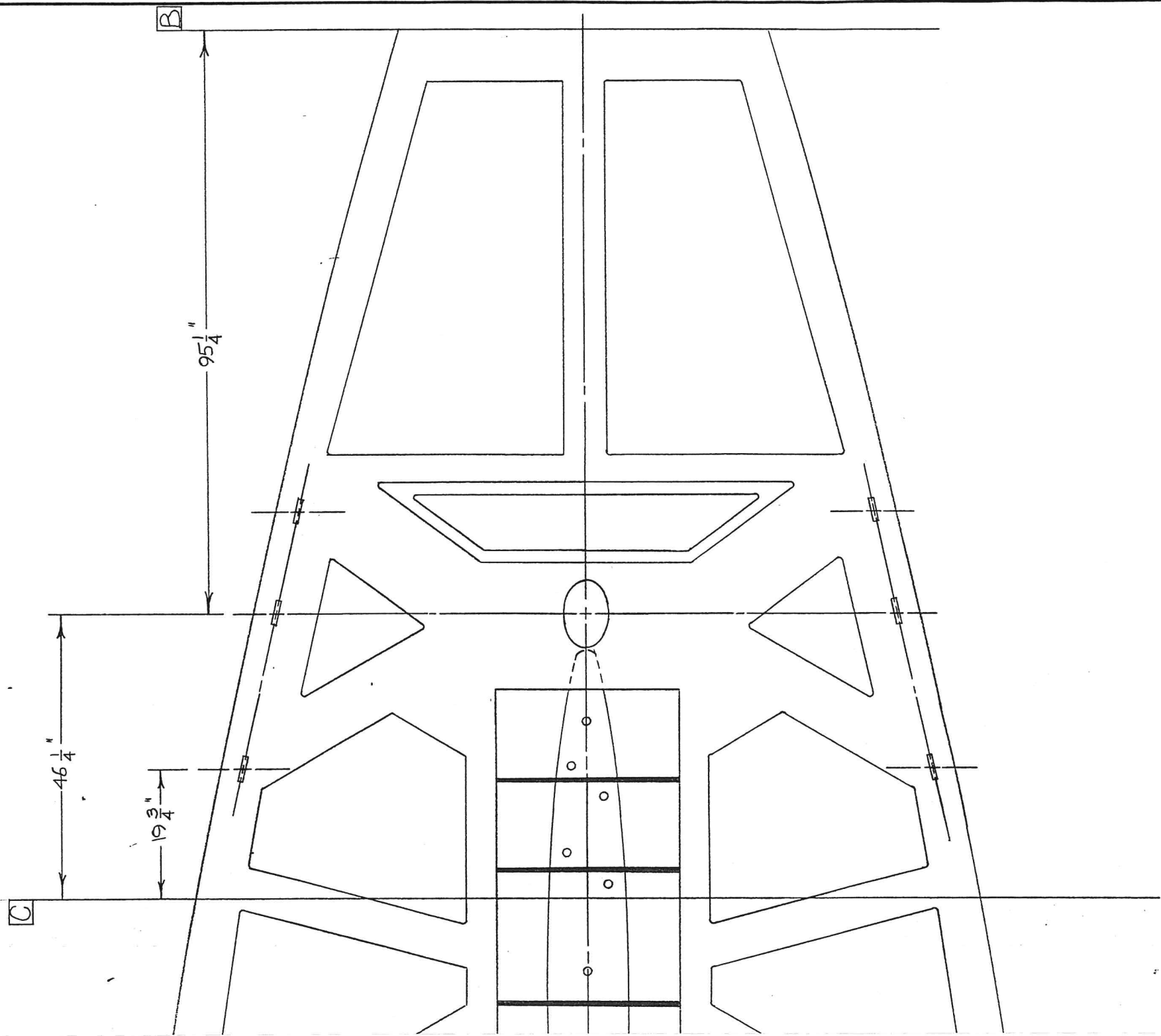
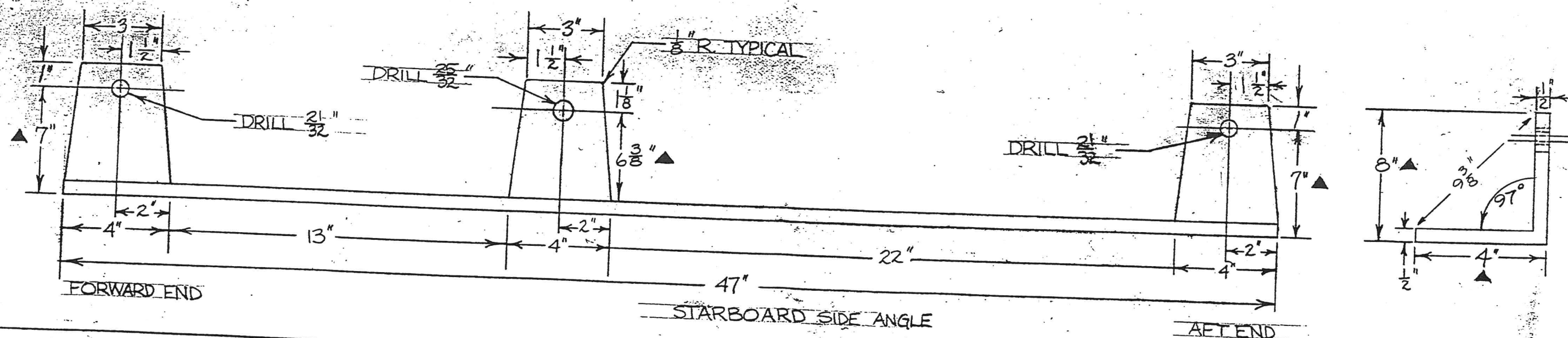
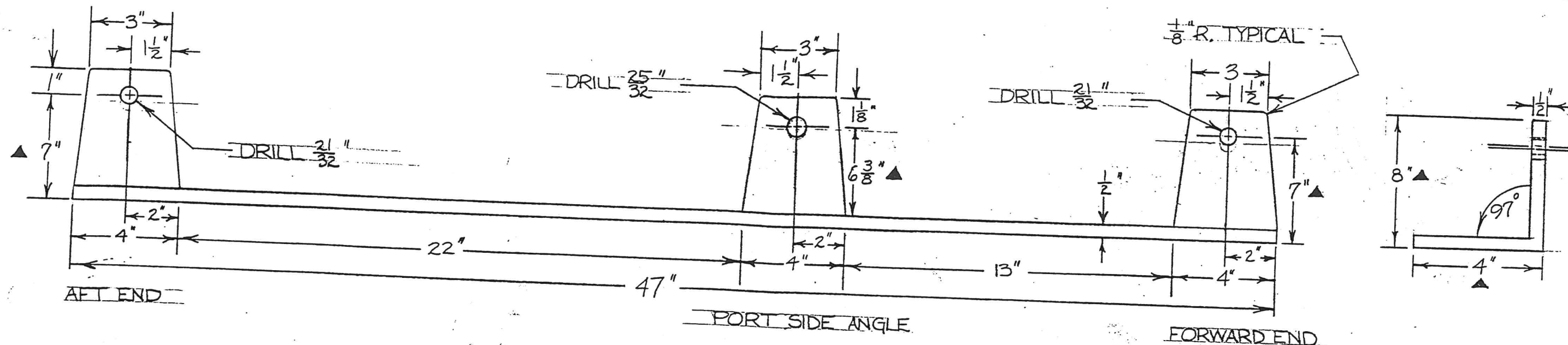


LTR		REVISION		DATE
-----	--	----------	--	------



NO.	QTY	DESCRIPTION	P/N
MORGAN YACHT CORP. 7200 BRYAN DAIRY RD. ST. PETERSBURG, FLORIDA			
MORGAN 50 GRID			
DESIGNED BY	DATE	DRAWING NO.	
DRAWN BY : ES	8-9-89		
CHECKED BY	SCALE		
FORWATER, INC.	1/4" = 1'-0"		

COPYRIGHT 1989 BY MORGAN YACHT CORPORATION.
ALL RIGHTS RESERVED. MAY NOT BE REPRODUCED
WITHOUT EXPRESS PERMISSION IN WRITING BY
MORGAN YACHT CORPORATION.



NO.	REVISION	DATE
1	MATERIAL CHANGE: 4x8x1/2"	11-6-89
2	ANGLE CHANGED TO 97°	2-1-90

NOTES:

1) ONE PAIR PER BOAT

2) MATERIAL: 4x8x1/2" ANGLE - MILD STEEL CUT TO ABOVE SPECS.

COPYRIGHT 19 BY CATALINA YACHTS. ALL RIGHTS RESERVED. MAY NOT BE REPRODUCED WITHOUT EXPRESS PERMISSION IN WRITING BY CATALINA YACHTS.

CATALINA YACHTS/MORGAN DIVISION
7200 Bryan Dairy Road
Largo, Florida

MORGAN 50
TIE ROD ATTACHMENT ANGLES

DESIGNED BY	DATE	DRAWING NO.
DRAWN BY: ESS	7-13-89	
CHECKED BY	SCALE	
APPROVED BY	3" = 1'0"	