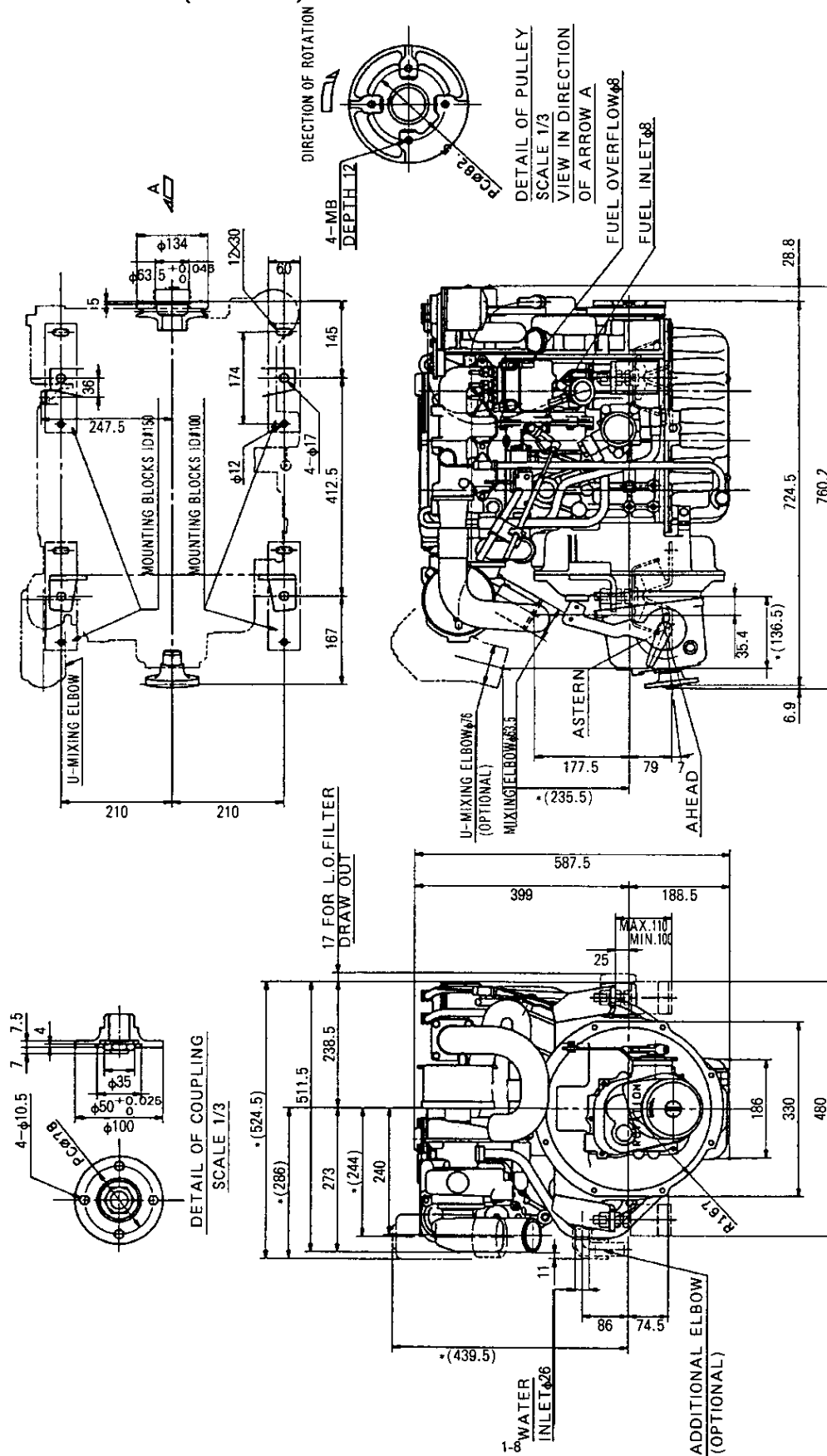


**YANMAR 3JH2-TE**

Model.	3JH2T(B)(C)E
Bore x Stroke.	82 X 86mm
Displacement.	1,363 cc.
Configuration.	3 Cylinder, vertical, 4cycle water-cooled diesel engine. Direct injection. Turbocharged
Sales date app..	1991 - 1998
Dimensions LxWxH mm.	782 X 511 X 587mm
Dry weight.	165Kg
Output: max. / continuous.	47Hp(35,0Kw)/3600Rpm / 43Hp(31,6Kw)/3400Rpm
Cooling System.	Constant high temperature fresh water cooling
Starting System.	Starter: 12V - 1,4Kw Generator: 12V - 55A (LR155-20)
Lubrication system.	Forced lubrication with trochoid pump
Mounting flange No.	SAE 5
Clutch.	Constant mesh, multiple friction disc (KBW10E)
Rotation, crankshaft / propel.	Counterclockwise / Clockwise viewed from stern
Fire Order.	1 - 3 - 2 - 1
Max. Torque.	9,6Kgm/3000Rpm
Fuel Consumption.	Max rpm. 185g/Hp-Hr
Notes:	(B)= Gearbox KM3A downangel 7° Cone clutch. (C)= Saildrive (SD31) Propel rotation: Counter clockwise. Gearoil 2,2L EP80/90
<b>Service Data:</b>	
Engine oil.	4,9L CD - 15W/40
Gear oil.	0,7L ATF "A" (KBW10E) / 0,45L CD - 15W/40 (KM3A)
Valve clearance (Cold).	Intake: 0,2mm Exhaust: 0,2mm
Fuel Injection Timing.	17° B.T.D.C.
Fuel Injection Pressure.	200+- 5Kg/cm <sup>2</sup>
Exhaust gas Temp.	600° C
Lub. Oil press.	3,5 - 4,5Kgf/cm <sup>2</sup> at max. output
Top Clearance / Compression.	0,71 - 0,89mm / --
<i>Tightning Torque:*</i>	
Cylinder Head.	8,5Kgm
Bearing Con-Rod.	5,5Kgm
Bearing Main.	11,5Kgm
Crankshaft V-pulley bolt	12,5Kgm
Damper disk bolts.	2,6Kgm
Flywheel Bolt.	8,0Kgm

3-4. 3JH2-TBE(KM3A)



- NOTE**
1. DWG. SHOWS MOUNTING BLOCKS AT ORIGINAL HEIGHT.
  2. ENGINE WEIGHT WILL COMPRESS BLOCKS BY 4MM (APPROX.).
  3. THE FIGERS MARKED WITH \* SHOW THE DIMENSIONS WITH U-MIXING ELBOW.