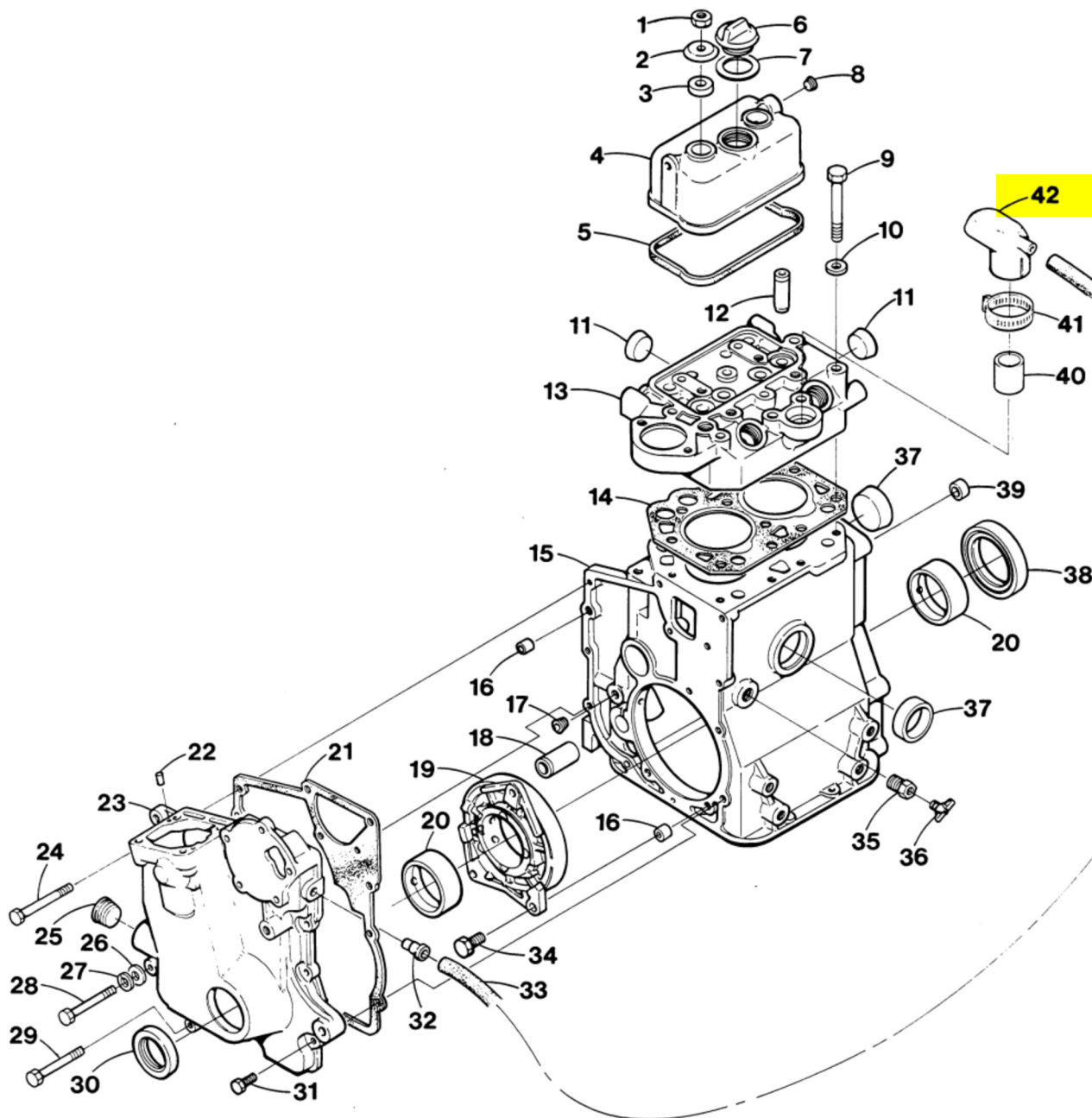


WESTERBEKE 10TWC - CYLINDER BLOCK AND HEAD



WESTERBEKE 10TWC - CYLINDER BLOCK AND HEAD

REF	PN	NAME	REMARKS	QUAN
1	18242	NUT	M8 DIN 934	2
2	30517	WASHER		2
3	30780	SEAL	OIL-ROCKER COVER STUD	2
4	33163	COVER	ROCKER	1
5	33164	GASKET	ROCKER COVER	1
6	33126	CAP	OIL FILLER WITH O-RING	1
7	33123	C-RING	OIL FILLER CAP	1
8	33127	PLUG		1
9	33135	BOLT	CYLINDER HEAD	10
10	33136	WASHER	CYLINDER HEAD BOLT	10
11	30714	PLUG	EXPANSION-25	2
12	33134	GUIDE	VALVE	4
13	33161	HEAD	CYLINDER WITH PLUGS AND VALVE GUIDES	1
14	33162	GASKET	HEAD	1
15- 1	32070	BLOCK	ASSEMBLY	1
15- 2	33160	BLOCK	BARE	1
16	33212	DOWEL	TUBULAR 6 X 9	2
17	30711	PLUG	1/8	2
18	33202	SHAFT	GOVERNOR GEAR	1
19	33132	HOUSING	BEARING	1
20- 1	33128	BEARING	CRANKSHAFT-STD	2
20- 2	33129	BEARING	CRANKSHAFT-0.25	2
20- 3	33130	BEARING	CRANKSHAFT-0.50	2
20- 4	33131	BEARING	CRANKSHAFT-0.75	2
21	33167	GASKET	TIMING CASE	1
22	30224	DOWEL		2
23	33166	CASE	TIMING	1
24	34212	CAPSCREW	M6 X 75 DIN 931	1
25	30713	PLUG		1
26	31784	WASHER	FLAT M6 DIN 125	1
27	31783	LOCKWASHER	M6 DIN 127	1
28	33351	CAPSCREW	M6 X 60 DIN 931	1
29	30146	CAPSCREW	M6 X 55 DIN 931	3
30	30209	SEAL	OIL	1
31	18804	CAPSCREW	M6 X 20 DIN 933	4
32	30219	NIPPLE	BREATHER HOSE	1
33	33165	HOSE	BREATHER	1
34	17196	CAPSCREW	M8 X 20 DIN 933	3
35	24752	BUSHING	1/4BSPT TO 1/8NPT	1
36	11471	PETCOCK		1
37	30716	PLUG	EXPANSION-40	2
38	33133	SEAL	OIL	1
39	30708	DOWEL	TUBULAR 10 X 9	2
40	33121	ADAPTER	HEAD TO AIR INTAKE SILENCER	1
41	21878	CLAMP		1
42	32434	SILENCER	AIR INTAKE	1