

## Models

# 1 GM10(C) 2 GM20(F)(C) 3 GM30(F)(C) 3 HM35(F)(C)

A. Engine Model Name	0-1
B. Engine Model Name Plate and Clutch Model Name Plate	0-1
C. Cylinder Number	0-3

## CHAPTER 1 GENERAL

1. Specifications	1-1
2. Principal Construction	1-4
3. Performance Curves	1-5
4. Features	1-9
5. Engine Cross-Sections	1-10
6. Dimensions	1-17
7. Piping Diagrams	1-24

## CHAPTER 2 BASIC ENGINE

1. Cylinder Block	2-1
2. Cylinder Head	2-9
3. Piston	2-28
4. Connecting Rod	2-34
5. Crankshaft	2-38
6. Flywheel and Housing	2-49
7. Camshaft	2-53
8. Timing Gear	2-59

## CHAPTER 3 FUEL SYSTEM

1. Fuel Injection System	3-1
2. Injection Pump	3-3
3. Injection Nozzle	3-25
4. Fuel Filter	3-29
5. Fuel Feed Pump	3-30
6. Fuel Tank (Option)	3-33

## CHAPTER 4 GOVERNOR

1. Governor	4-1
2. Injection Limiter	4-9
3. No-Load Maximum Speed Limiter	4-11
4. Idling Adjuster	4-12
5. Engine Stop Lever	4-13

## CHAPTER 5 INTAKE AND EXHAUST SYSTEM

1. Intake and Exhaust System	5-1
2. Intake Silencer	5-3
3. Exhaust System	5-4
4. Breather	5-6

## CHAPTER 6 LUBRICATION SYSTEM

1. Lubrication System	6-1
2. Oil Pump	6-5
3. Oil Filter	6-9
4. Oil Pressure Regulator Valve	6-12
5. Oil Pressure Measurement	6-14

## CHAPTER 7 DIRECT SEA-WATER COOLING SYSTEM

1. Cooling System	7-1
2. Water Pump	7-5
3. Thermostat	7-11
4. Anticorrosion Zink	7-14
5. Kingston Cock (Option)	7-16
6. Bilge Pump and Bilge Strainer (Option)	7-17

## CHAPTER 8 FRESH WATER COOLING SYSTEM

1. Cooling System	8-1
2. Sea Water Pump	8-3
3. Fresh Water Pump	8-4
4. Heat Exchanger	8-7
5. Filler Cap and Subtank	8-11
6. Thermostat	8-13
7. Cooling Water Temperature Switch	8-16
8. Precautions	8-17

## CHAPTER 9 MODIFYING THE COOLING SYSTEM

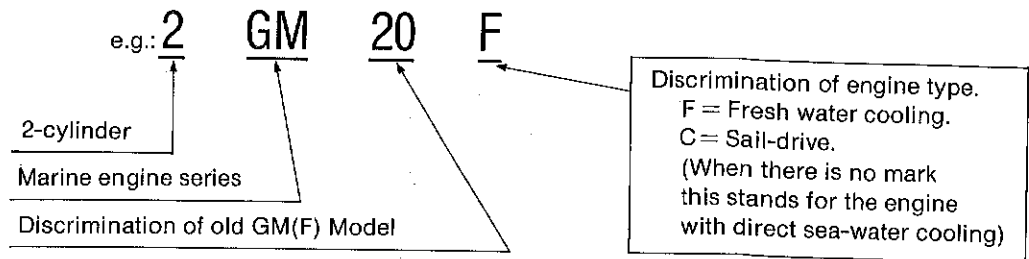
1. General	9-1
2. Disassembly of Sea Water-Cooled Engine	9-2
3. Assembling modified parts to the Fresh Water-Cooled Engine	9-7
4. Cautions When the Engine is Installed Inboard	9-12

## CHAPTER 10 REDUCTION AND REVERSING GEAR

[A] For Engine Models 1GM10, 2GM20(F) and 3GM30(F)	
1. Construction	10-1
2. Shifting Device	10-7
3. Inspection and Servicing	10-14
4. Disassembly	10-19
5. Reassembly	10-24
[B] For Model 3GM35(F)	
1. Construction	10-29
2. Installation	10-33
3. Operation and Maintenance	10-34
4. Inspection and Servicing	10-35
5. Disassembly	10-40
6. Reassembly	10-44
[C] Marine Gear Models KM2P, KM3P and KM3V for Engine Models 1GM10, 2GM20(F) and 3GM30(F)	
1. Construction	10-50
2. Shifting Device	10-56
3. Inspection and Servicing	10-61
4. Disassembly	10-68
5. Reassembly	10-73
[D] V-drive Gear, Model KM3V	
1. Construction	10-77
2. Specifications	10-80
3. Power Transmission System	10-81
4. Cooling System (Sea-water Cooling Engine)	10-82
5. Piping Diagrams	10-85
6. Inspection and Servicing	10-90
7. Shim Adjustment for V-drive Gear Shaft, and Backlash Adjustment for V-drive Gear Shaft and Drive Gear	10-92
8. Disassembly	10-94
9. Reassembly	10-97

# A. Engine Model Name

The nomenclature of the New GM(F)/HM(F) series follows the order shown below.



## B. Engine Model Name Plate and Clutch Model Name Plate

To every engine model described in this manual, an engine model name plate and clutch model name plate are fitted as shown in the following figures. In addition, the engine serial number is stamped on the cylinder body. Specifications of the engine and clutch to be shipped are recorded and filed using the numbers marked on the engine model name plate and clutch model name plate.

The specifications or components of the engine or clutch may have been partially altered to improve performance, and the components involved may not necessarily be interchangeable.

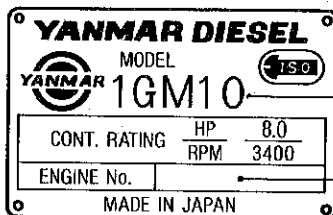
Therefore, when parts are ordered, please furnish the item description in the blank spaces shown in the figures, using the descriptions given on these plates.

### B-1 Item descriptions on the model name plates and information to be forwarded to us

[Item descriptions on Model name plates]

[Information to be forwarded to us]

#### Engine model name plate

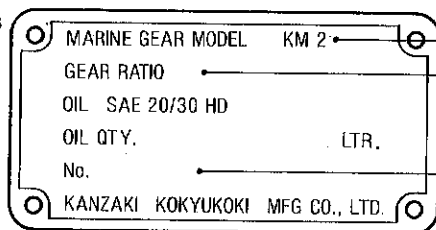


Your engine model

Your engine number

#### Clutch model name plate

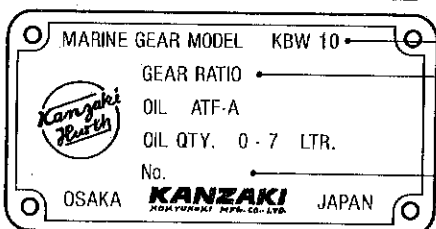
GM-series



Your clutch model

Your clutch gear ratio

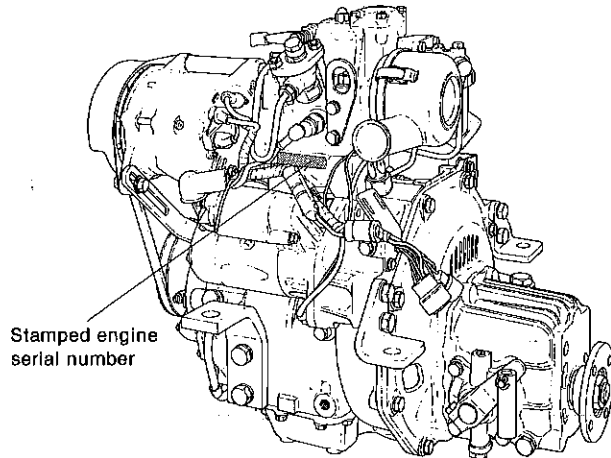
HM-series



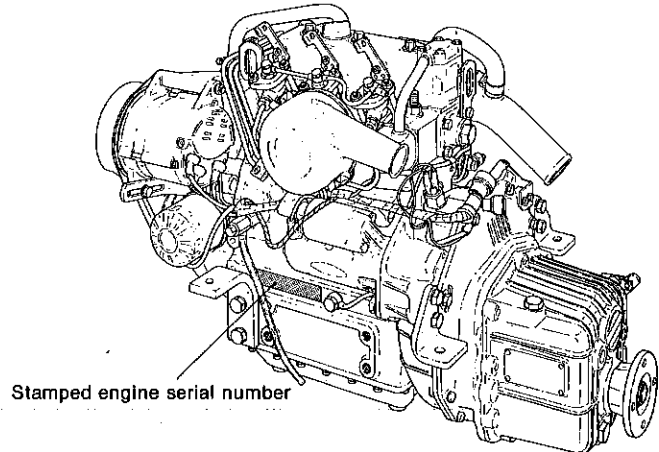
Your clutch number

### **B-3 Location of stamped engine serial number**

#### **B-3.1 1GM10(C)**

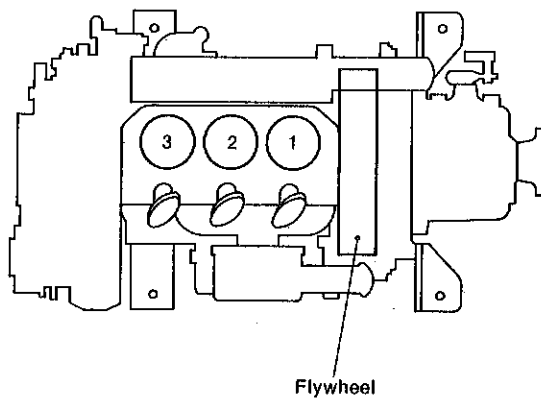


#### **B-3.2 2GM20(F)(C), 3GM30(F)(C), 3HM35(F)(C)**



## **C. Cylinder Number**

The cylinder numbers of the 2 cylinder engine and 3 cylinder engine described in this manual are designated as follows.



- (1) The sequence of cylinder numbers is given as No. 1, No. 2 and No. 3 starting from the flywheel side.
- (2) These cylinder numbers are consistently used for devices and parts connected with the cylinder head and valve moving mechanism. However, please note that items related to the fuel injection pump do not correspond to the numbering of the cylinders.