

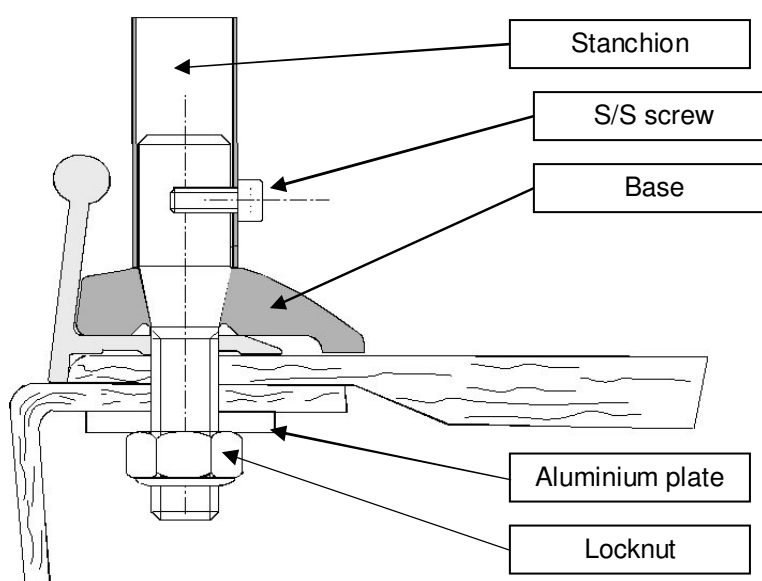
A – STAINLESS STEEL BASES ON ALUMINIUM RAIL:

NECESSARY PRODUCTS	REFERENCES
<ul style="list-style-type: none"> - S/S bases - S/S screws A4 HSH M6 x 16mm - Aluminium plate 70 X 70 X 5 mm - S/S locknut A4 D14 mm - S/S nut A4 HH D14 mm - High temperature anti corrosive grease - Translucent silicone - Airtight glue n 3 	<ul style="list-style-type: none"> - 049045 - 927450 - 029640 - 328000 - 326900 - 004014 - 063924 - 233200

MATERIAL NECESSARY
<ul style="list-style-type: none"> - Drill bit Ø 14 - Countersink - Drill

OPERATING PROCEDURE

- Present the stanchion base.
- Drill rail like deck and hull flange Ø 14 mm.
- Make a chamfer on rail hole with a 90 ° countersink (3X3 mm chamfer)
- Apply a large translucent silicone seal, around base threads.
- Engage the stanchion base into countersunk rail hole.
- Put an aluminium plate from inside + s/s 14 mm locknut.
- If there is not enough room for a locknut, put on base threads some airtight glue n3, prior to place a standard s/s 14 mm nut.
- Tight the nut.



DO NOT USE AN IMPACT WRENCH TO TIGHT LOCKNUTS, TO AVOID NUT SOLDERING.

2.7.

STANCHIONS BASES INSTALLATION

Tight 6 mm bolt into base threads, with non corrosive high temperature grease.

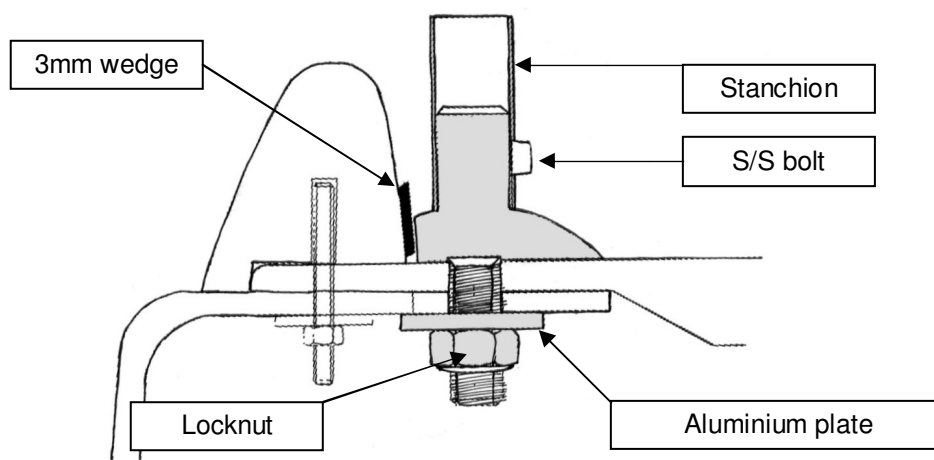
B – STAINLESS STEEL BASE ON WOOD RAIL:

NECESSARY PRODUCTS	REFERENCES
<ul style="list-style-type: none"> - Stanchion base - S/S bolt A4 HSH M6 x 16 mm - Aluminium washer 70 X 70 X 5 mm - S/S locknut D14mm. - S/S nut A4 D14mm. - High temperature non corrosive grease - Translucent silicone - Airtight glue 	<ul style="list-style-type: none"> - 067155 - 029640 - 328000 - 326900 - 004014 - 063924 - 233200

NECESSARY MATERIAL
<ul style="list-style-type: none"> - Drill bit Ø 14 mm - Countersink 90° angle - Drill - Wedge 3 mm thick

OPERATING PROCEDURE

- Present stanchion base and place it on the deck. Put in between base and wood rail the 3 mm wedge, to keep a water drain.
- Drill deck and hull flange with Ø 14 drill bit.
- Make a chamfer on deck hole, with the countersink 90 °.
- Apply a translucent silicone seal, around base threads.
- Engage stanchion base into countersunk deck hole.
- Put from inside an aluminium plate + S/S locknut D14 mm.
- If there is not enough room for a locknut, put on base threads some airtight glue, prior to place a standard 14mm nut.



DO NOT USE AN IMPACT WRENCH TO TIGHT LOCKNUTS, TO AVOID NUT SOLDERING.

- Tight 6 mm bolt into base threads, with non corrosive high temperature grease.