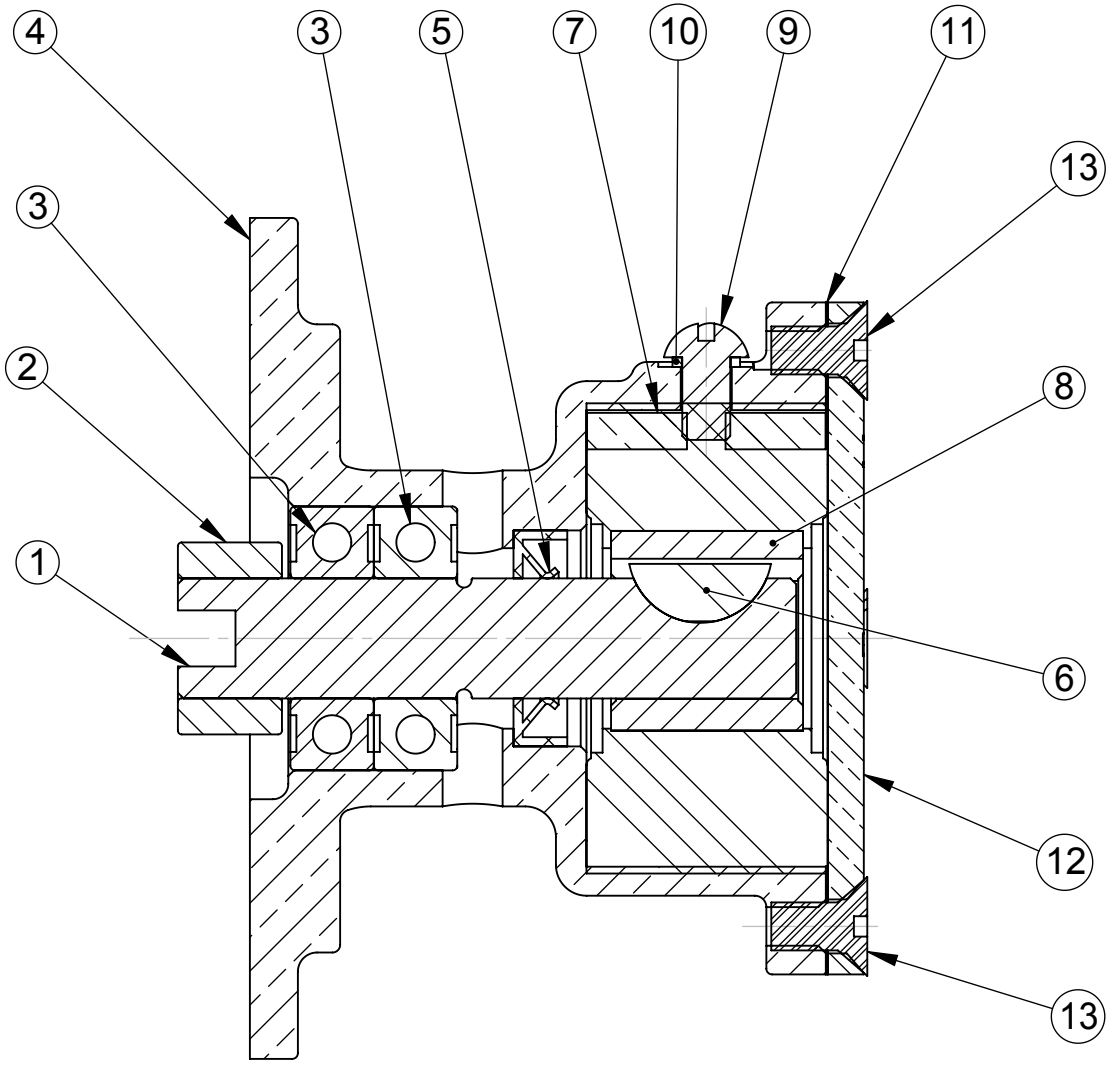


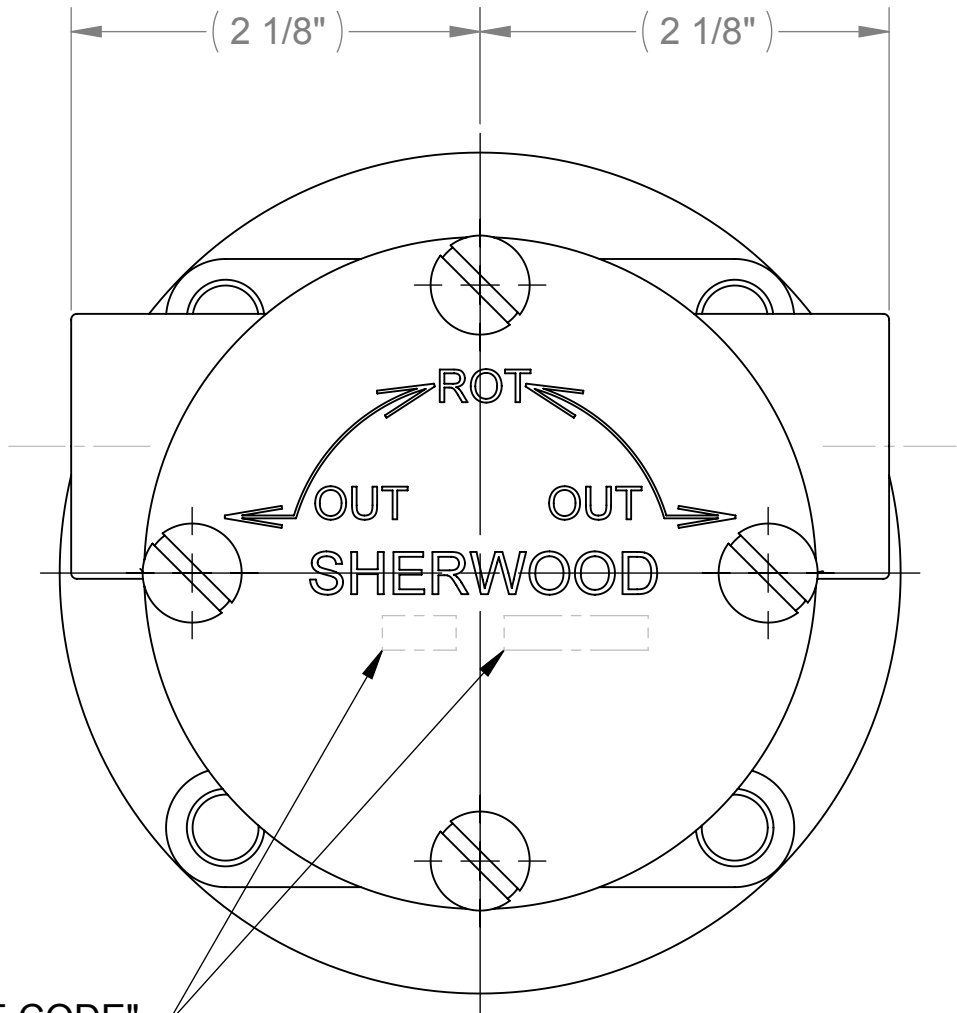
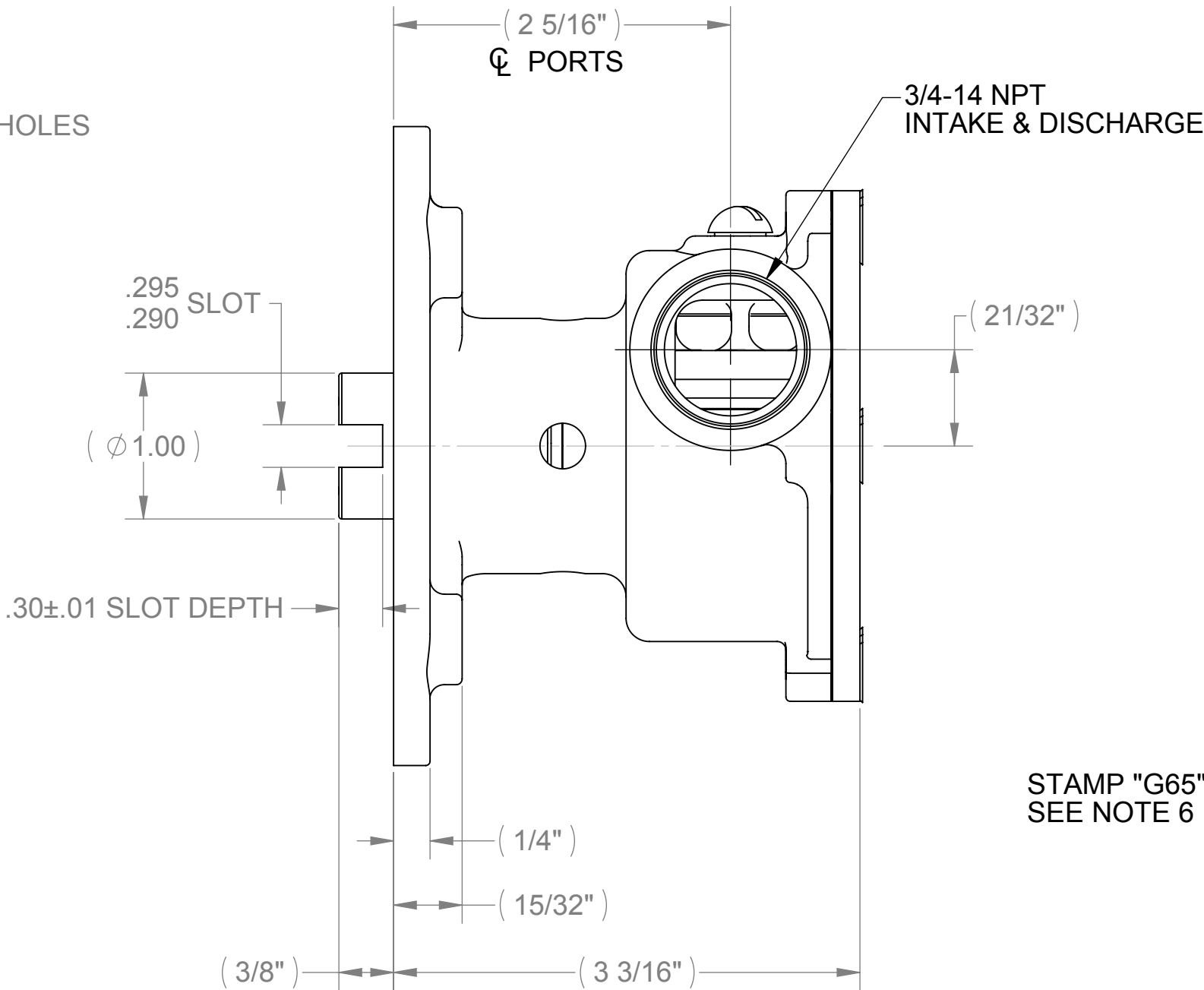
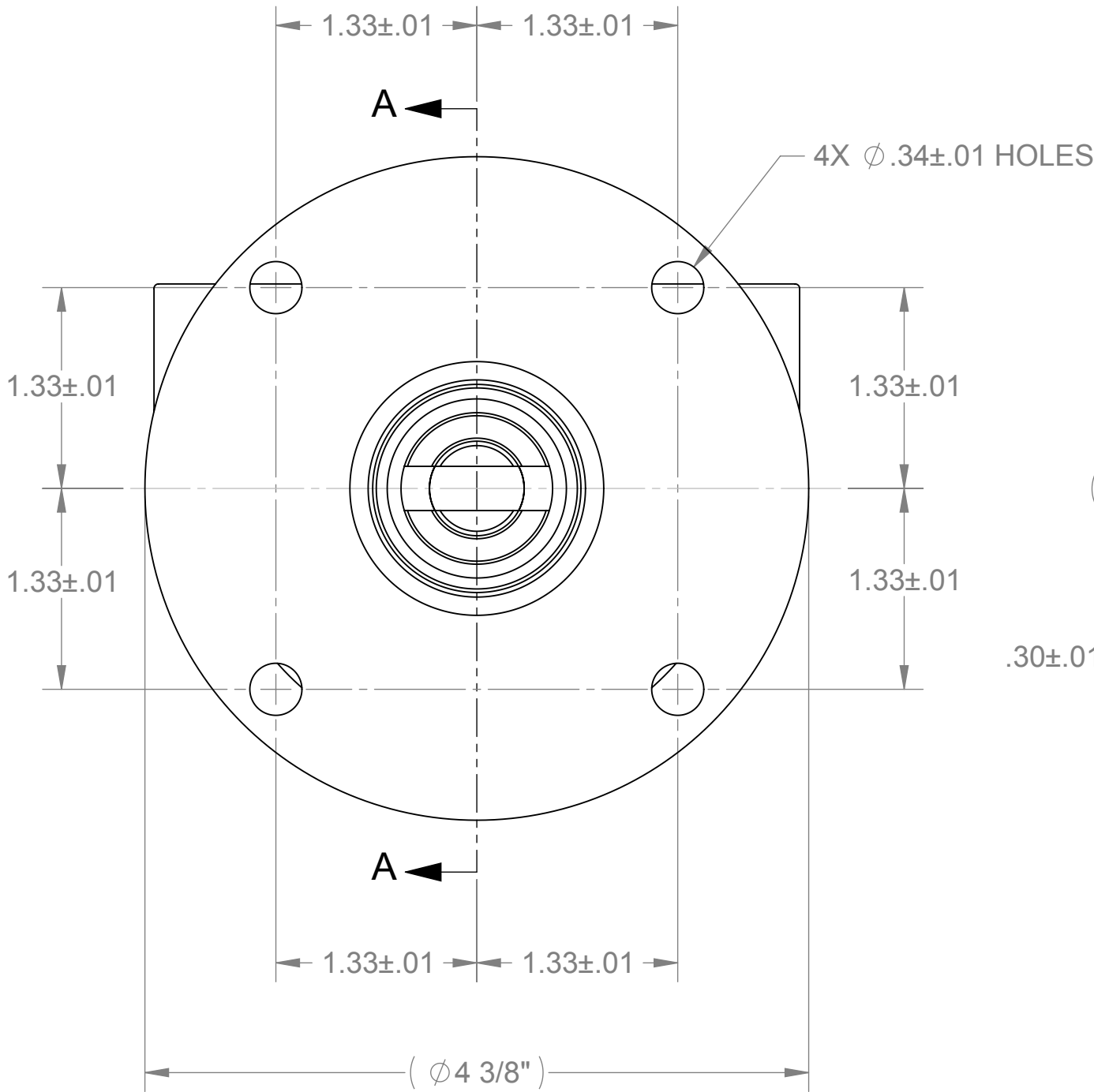
ITEM NO.	PART NUMBER	DESCRIPTION	QTY.
1	12441	SHAFT, RUBBER IMP.	1
2	12442	COUPLING - DRIVE SHAFT	1
3	12211	BALL BEARING	2
4	12440	BODY - MACHINED	1
5	10514C	LIP SEAL	1
6	04432	WOODRUFF KEY	1
7	10072	CAM	1
8	09959	RUBBER IMPELLER	1
9	19995	SCREW 1/4-20 ROUND HD	1
10	19996	CAM WASHER	1
11	11360	GASKET - FIBER	1
12	11389	PUMP COVER	1
13	11417	FLAT HD MACH SCREW	4

PART NUMBER	G65
-------------	-----




SECTION A-A

- NOTES:
- ① 1. APPLY BEAD OF PERMATEX TO O.D. OF LIP SEAL, — LIP SEAL, ITEM 3.
2. APPLY SIL-GLYDE TO SEAL LIP I.D. PRIOR TO SHAFT INSTALLATION, ITEM 5
3. APPLY BEAD OF PERMATEX AROUND THREADED HOLE IN CAM PRIOR TO ASSEMBLY, ITEM 7.
4. USE COOLANT TO AID IN INSTALLATION OF RUBBER IMPELLER, ITEM 8.
5. TEST PUMP WITH VALVE OPEN FOR ONE MINUTE, THEN PRESSURIZE PUMP TO 20 - 30 PSI, TO CHECK LIP SEAL FOR LEAKS.
6. STAMP "G65" AND "DATE CODE" ON COVER, ITEM 8.



STAMP "G65" & "DATE CODE"
SEE NOTE 6

R	6675	REMOVED NOTE 1, REDIMENSIONED	PEB	2/12/2008
P	6386	ADD NOTES, REDRAWN ON NEW FORMAT	PEB	8/7/2007
REV.	ECN.	DESCRIPTION	CHKD.	DATE

<div><div><div>SHERWOOD</div><div>A Div. of Hypro Corporation A PENTAIR COMPANY</div><div>375 Fifth Avenue NW, New Brighton, MN 55112, (651) 766-6300</div></div></div>				REPLACES PART NO.		REV.
DRAWING BASED ON ASME Y14.5M-1994		DO NOT SCALE PRINT	SIZE C	DWG BY:	RI	DATE:12/22/1980
				CHECKED BY:	RBM	DATE:12/23/1980
<div><div></div><div>THIRD ANGLE PROJECTION</div></div>		SCALE 1:1	SHEET NUMBER 1 OF 1	APPROVED BY: DATE:		
				THIS DRAWING IS THE PROPERTY OF HYPRO, AND WITHOUT WRITTEN AUTHORIZATION, MUST NOT BE COPIED OR COMMUNICATED		
PART DESCRIPTION				PART NUMBER		REV.
PUMP ASSY - RUBBER IMP.				G65		R