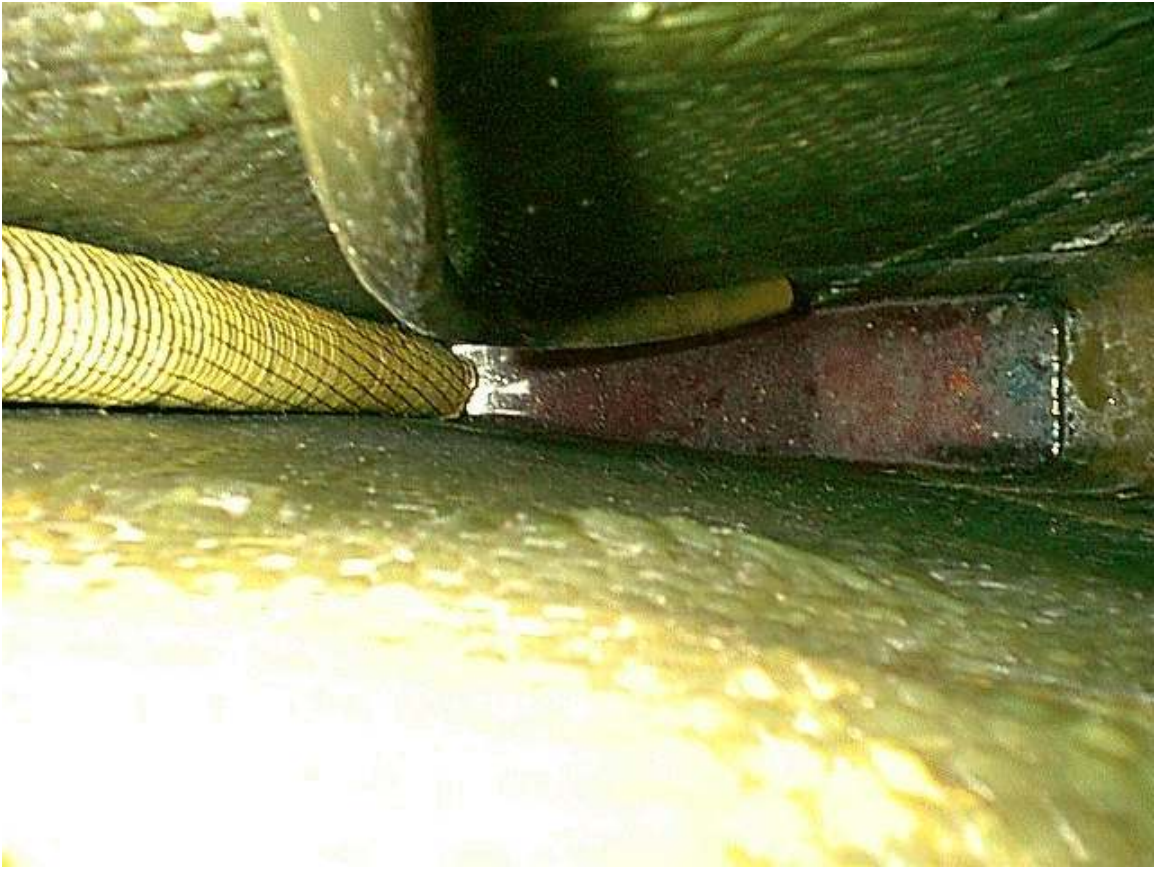




This is a view under the sole, looking forward. You can see the turn from the hull to the keel on each side... The flat part the hose runs across is the top of the keel - encased lead. The hose is, I believe, the drain from the shower pan. You can see the tabbing of the main bulkhead to the hull, with a tube to allow water to drain from the bow, across the top of the keel, and to the bilge.



This is the view looking straight down into the access hole. It is approximately 38 inches deep; 22 inches long (across the page in the picture) and between 4 and 6 inches wide, being wider at the top than at the bottom. The ribbed hose on the left is a 1 1/2 inch hose to the manual bilge pump. The hose coming from the top of the picture is the drain from the refrigerator/ice box. There's a gallon or two of antifreeze in the bottom of the bilge. Electric bilge pump was removed for the picture.



Looking through the access hole down and a bit forward. This is looking straight into the corner of what is the encased ballast. The shallow bilge runs toward the top of the picture across the encased lead. The deep bilge is toward the bottom of the picture.