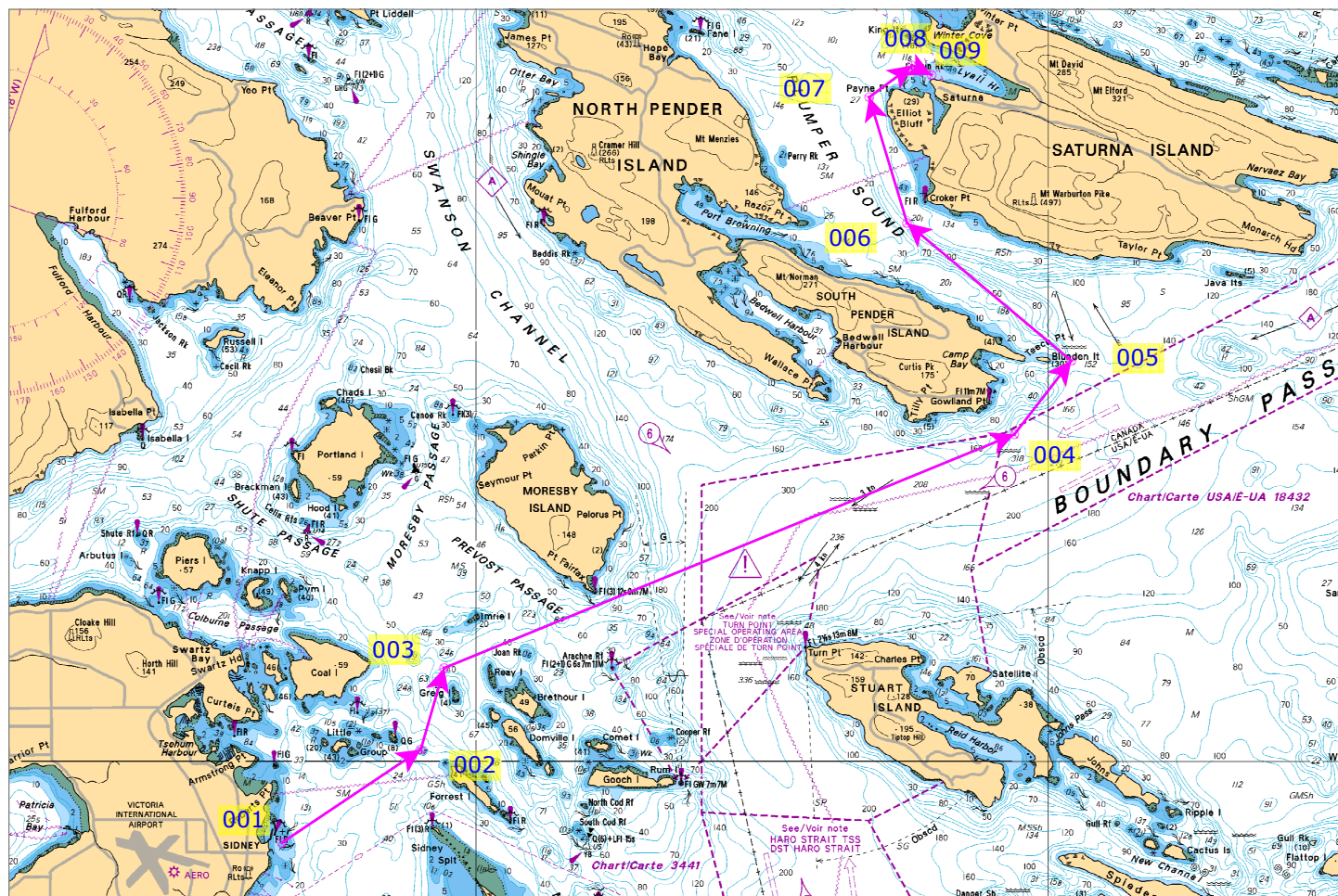


(Tsehum Harbour, Little Group, Canada to Lyall Harbour, Saturna Island, Canada)

Total Distance: 15.952 nm Total Time: N/A Depart: not set ETA: N/A



NOT FOR NAVIGATION

| Leg to | Bearing | Speed | Turn | Distance | ETA (TTG) | End Position |
|--------|-------------------|---------|------------------|----------|-----------|--------------------------|
| 002 | 056.0° T 040.0° M | 6.00 kn | 71° to port | 1.932 nm | N/A | 48°40.147'N 123°20.969'W |
| 003 | 016.0° T 360.0° M | 6.00 kn | 40° to port | 0.982 nm | N/A | 48°41.091'N 123°20.558'W |
| 004 | 067.6° T 051.6° M | 6.00 kn | 51° to starboard | 7.109 nm | N/A | 48°43.795'N 123°10.595'W |
| 005 | 037.7° T 021.7° M | 6.00 kn | 29° to port | 1.074 nm | N/A | 48°44.645'N 123°09.598'W |
| 006 | 310.1° T 294.0° M | 6.00 kn | 87° to port | 2.473 nm | N/A | 48°46.236'N 123°12.469'W |
| 007 | 343.4° T 327.3° M | 6.00 kn | 33° to starboard | 1.519 nm | N/A | 48°47.691'N 123°13.130'W |
| 008 | 053.5° T 037.4° M | 6.00 kn | 70° to starboard | 0.613 nm | N/A | 48°48.056'N 123°12.382'W |
| 009 | 116.0° T 099.9° M | 6.00 kn | | 0.250 nm | N/A | 48°47.946'N 123°12.041'W |