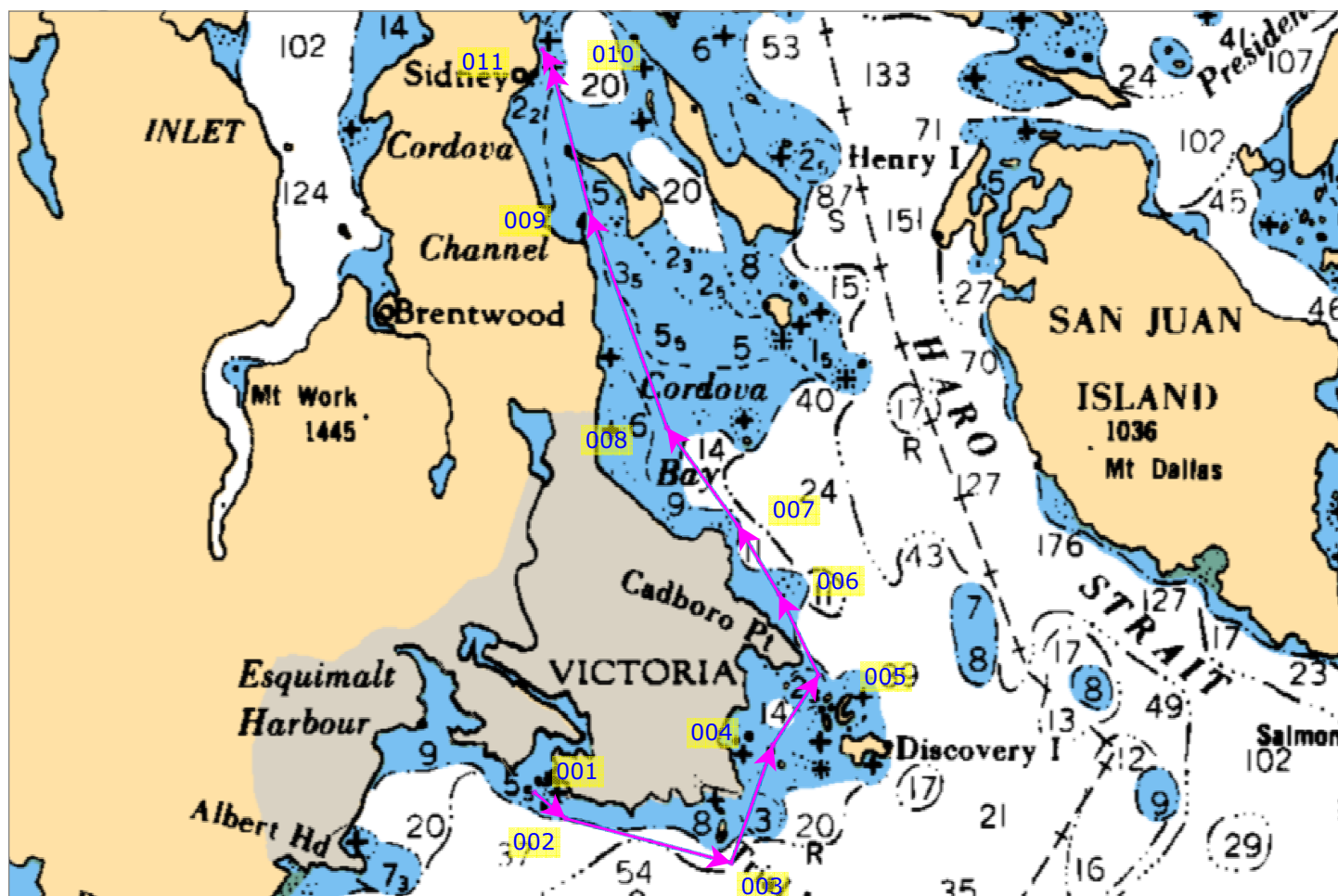


(Victoria Harbour, Oak Bay, Canada to Tsehum Harbour, Little Group, Canada)

Total Distance: 21.408 nm Total Time: N/A Depart: not set ETA: N/A



Leg to	Bearing	Speed	Turn	Distance	ETA (TTG)	End Position
002	130.0° T 114.0° M	6.00 kn	164° to port	0.783 nm	N/A	48°24.309'N 123°22.854'W
003	105.0° T 089.0° M	6.00 kn	24° to port	3.307 nm	N/A	48°23.451'N 123°18.044'W
004	019.3° T 003.3° M	6.00 kn	85° to port	2.415 nm	N/A	48°25.730'N 123°16.842'W
005	033.2° T 017.2° M	6.00 kn	13° to starboard	1.607 nm	N/A	48°27.075'N 123°15.516'W
006	334.2° T 318.2° M	6.00 kn	59° to port	1.744 nm	N/A	48°28.644'N 123°16.662'W
007	329.1° T 313.1° M	6.00 kn	5° to port	1.547 nm	N/A	48°29.971'N 123°17.861'W
008	324.1° T 308.1° M	6.00 kn	5° to port	2.322 nm	N/A	48°31.851'N 123°19.918'W
009	340.4° T 324.3° M	6.00 kn	16° to starboard	4.391 nm	N/A	48°35.987'N 123°22.149'W
010	345.5° T 329.4° M	6.00 kn	5° to starboard	2.937 nm	N/A	48°38.830'N 123°23.265'W
011	329.9° T 313.9° M	6.00 kn		0.356 nm	N/A	48°39.138'N 123°23.535'W