

# The Reefer II™

## The most advanced roller furling system. EVER.

There has never been a roller furling system like the **Reefer II**. It's easy to install...Easy to maintain...Easy to use...and, it out-performs all others.

Gone forever are the bulky, heavy head fittings that are always in the way. Gone are complicated and often troublesome halyard swivels. And, gone is the need for complex double swivels and thrust bearings that compensate for system loading.

With the **Reefer II** we've even eliminated our own internal halyards. Sails are hoisted using the boat's halyards. They are held aloft by a simple positive action cam in a head fitting that's just slightly larger than the foil itself. And easy-to-use multi-part cunningham puts tension on the sail, not the system, so furling is the easiest yet.

Sailing performance is the Best, too. Proper shape is controlled, even when reefed, by a simple padded ruff, not double swivels. And, you can substantially increase the size of your sails because with a **Reefer II** the head is higher and the tack is lower. There is a **Reefer II** available for every boat, from daysailers to maxi yachts.



### Features:

- Sizes to fit boats from 22 to 70 feet.
- High quality cast marine aluminum low-profile continuous drum.
- Direct line drive for positive furling and reefing control.
- Brings tack as close as 5 1/2" above the deck.
- Leading edge double grooved aerodynamic T-6 aluminum foil in 7 foot sections for easy handling and storage.
- Low maintenance using totally non-corrosive materials.
- Can be owner-installed.
- Multi-part cunningham tensions the sail not the system.
- Chrome plated beryllium copper head fitting. Slim, rugged and lightweight so it won't foul halyards.
- For racers, an optional package completes the best racing furling system on the market.

### The Reefer II Selection Guide

Model No.	Size	Boat Length (in ft.)	Boat Displace (in lbs.)	Headstay Wire Size	Turnbuckle Stud Size	No. Supplied Extensions	Max. Headstay Length (in ft.)	Sailmakers Luff Deductions St'd./Navtec
4004C	#4	22-25	8,000	5/32"	5/16"	5	33	11/17
4006C	#6	25-29	8,000	3/16" 7/32"	5/16" 3/8"	6	39	11/17
4007C	#7	29-32	11,000	7/32" 1/4"	3/8"	6	43	11/17
4008C	#8	30-33	20,000	1/4" 9/32"	3/8" 1/2"	6	43	19/25
4009C	#9	33-37	20,000	1/4" 9/32"	3/8" 1/2"	7	50	19/25
4010C	#10	35-42	37,500	5/16" 3/8"	1/2" 5/8"	7	50	19/25
4012C	#12	40-48	37,500	5/16" 3/8"	1/2" 5/8"	8	57	19/25
4016C	#16	48-60	65,000	7/16"	5/8" 3/4"	9 10	64 71	19/25
4018C	#18	52-70	75,000	7/16" 1/2" 5/8"	3/4" -1"	10 11	71 78	22/28



## CRUISING DESIGN, INC.

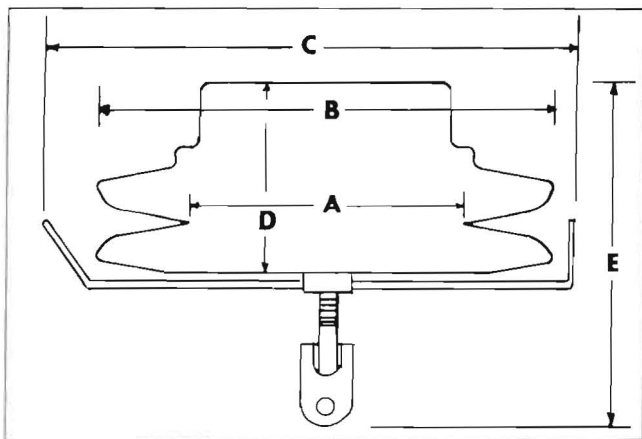
Advanced Equipment to Simplify Cruising & Racing

Box 151, Peabody, Massachusetts 01960

(617) 532-2712 800-343-0214 (Outside Mass. Only)

# The Reefer II™ – Technical Information

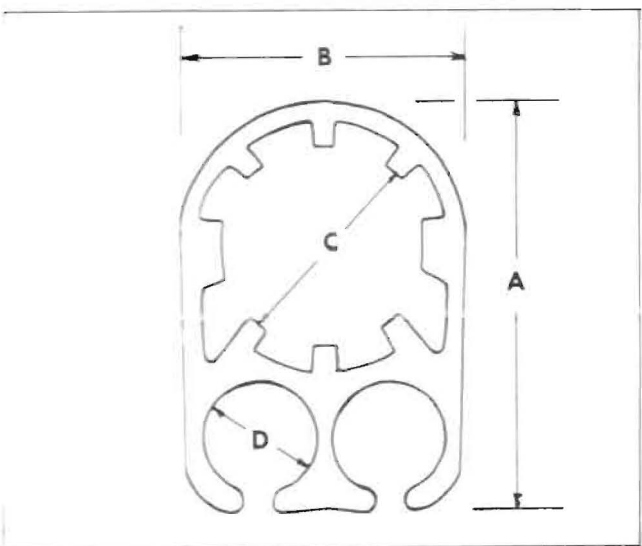
## Drum Data



	4/6/7	8/9	10/12	16	18
A Drum I.D.	3 1/2"	3 1/2"	5"	5"	6 3/4"
B Drum O.D.	4 3/4"	4 3/4"	7"	7"	9"
C Line Guard	5 3/4"	5 3/4"	8"	8"	10"
D Drum Ht.	1 1/8"	1 1/8"	1 1/4"	1 1/4"	1 3/4"
E Toggle/Tack	7 1/4"	7 1/4"	7 1/2"	7 1/2"	9"
Line Size	3/8"	3/8"	7/16"	7/16"	1/2"

The Reefer™ with Spool™ is available in special order. See Reefer - Spool for technical information. Change Reefer™ Model No. Summary Chart when ordering - Example 40043.

## Extrusion Data



	4/6/7	8/9	10/12	16/18
A Fore/Aft Dia.	1 1/8"	1 3/8"	1 1/2"	2 3/4"
B Port/Strb'd Dia.	1 1/2"	1"	1"	2 1/8"
C Max. Stud Dia. (excl. flats)	.490"	.643"	.782"	1.125"
D Sail Tape Size	#6	#6	#6	#9
Wt./ft.	.38/ft.	.53/ft.	.56/ft.	.93/ft.
Max. Stay Size	1/4"	9/32"	3/8"	5/8"

