

- (A) - RESIN MIX - w/ HI-FIB 250 and CHOPPED STRAND  
PACK SOLID UNDER STRUT AND FAIR TO HULL  
INSIDE HULL AT 45°, OUTSIDE FAIR TO ADJACENT SURFACE  
- NO CRACKS HOLES OR FISSURES IN BONDING MIX,

- (B) LAMINATE OVER STRUT BONDING MIX AND AROUND  
SHAFT LOG WITH,

NOTE: EA. LAMINATE  
MUST OVER LAP ON TO HULL 1" MINIMUM,

STEP 1, 1 (1) - 1.5 OZ. MATT

" 2 (1) 7.5 OZ. CLOTH

" 3 (1) 1.5 OZ MATT

" 4 (1) 7.5 OZ CLOTH

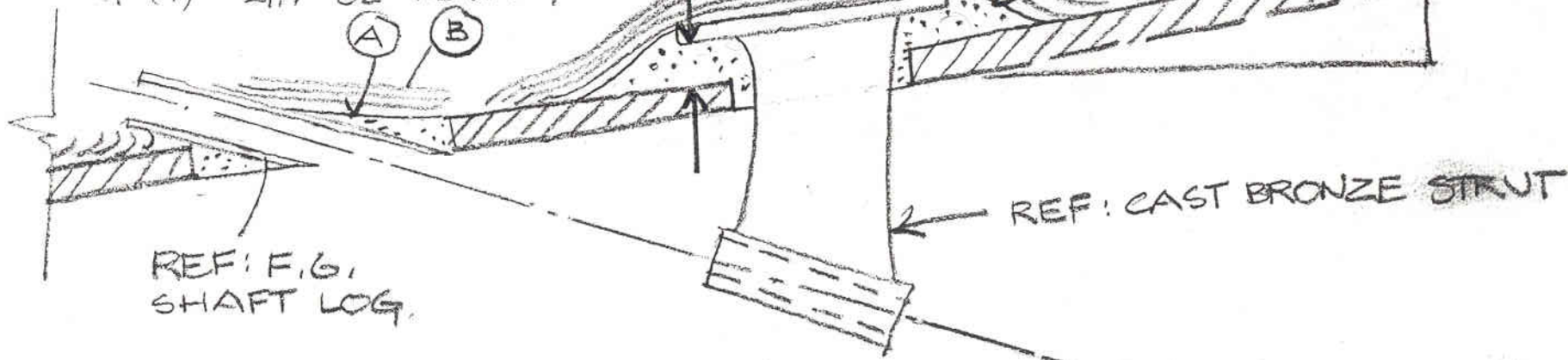
STEP 2, 1 (1) 1.5 OZ MATT

" 2 (1) 21.7 OZ ROVING

" 3 (1) 1.5 OZ MATT

" 4 (1) 21.7 OZ ROVING.

STRUT FLANGE  
MUST BE  
AS CLOSE TO  
HULL AS  
POSSIBLE



REF: F.6,  
SHAFT LOG.

REF: CAST BRONZE STRUT

CATALINA YACHTS INC.

SCALE: NONE

APPROVED BY:

DRAWN BY GD,

DATE: 10-29-80

REVISED

STRUT AND SHAFT LOG BONDING.

CATALINA 27 and 30

DRAWING NUMBER

300-50013-1

P/N 50074

1) BED BOLTS THRU  
WITH URETHANE  
SEALANT AT WASHER  
AND BOLT HEADS  
AND POLES

MAT + CLOTH OVER.  
MICRO BALLOON/RESIN MIX.  
3/8 HEX NUT, SS (2)  
LOCK WASHER, LG. SS  
FLAT WASHER, LG. SS

REF: BOTTOM OF HULL

REF: STRUT

← 2" MIN. →  
overlap  
on to hull  
all around filler.

1 x 1 1/4 x 4"  
cellulose Basting

- 1) DETERMINE STRUT ANGLE  
BY SETTING STRUT IN PLACE W/ SHAFT
- 2) DRILL 3/8" D. HOLES  
IN HULL THRU STRUT
- 3) REMOVE STRUT SET IN PLACE  
W/ REINFORCED RESIN MIX
- 4) BOLT STRUT IN PLACE BED BOLTS AND  
WASHERS WITH URETHANE SEALANT
- 5) FILL AND FAIR STRUT TO HULL  
W/
- 6) GLASS OVER FILLER W/  
(1) 175 OZ MATT  
(1) 7.5 OZ CLOTH
- 7) PAINT W/ ACT. PRIMER

- 8) AFTER TIGHTENING NUTS, PACK  
AROUND NUTS W/ MICRO BALLON-RESIN MIX.
- 9) GLASS OVER NUTS W/  
(1) 1.5 OZ MATT  
(1) 7.5 OZ CLOTH

CATALINA

SCALE: NONE

APPROVED BY:

DRAWN BY: GD

DATE: 12-11-80

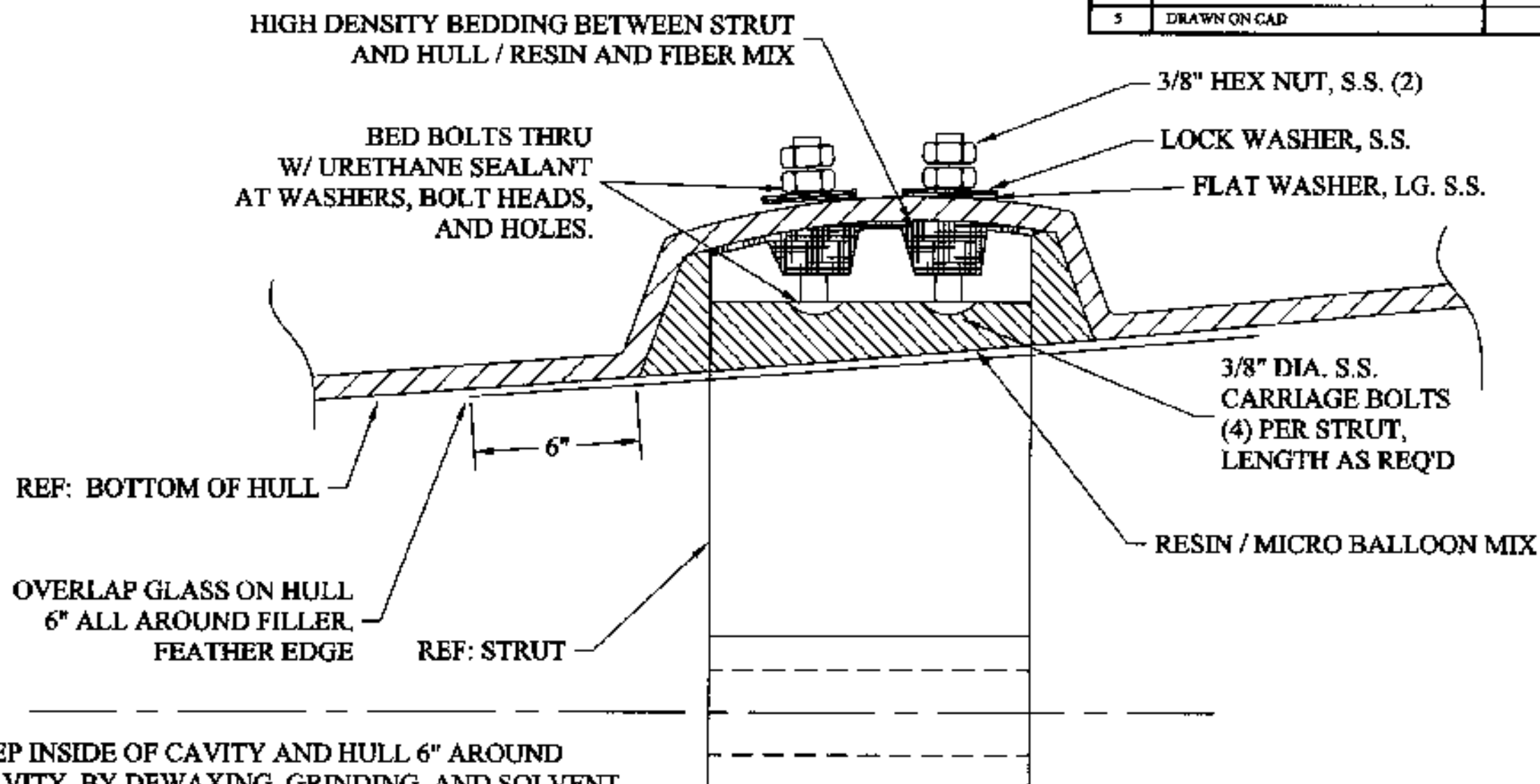
REVISED 1-5-83

EXTERNAL STRUT INSTALLATION

CAT 27, 28, 30, 32, 34, 36, 38

DRAWING NUMBER  
300-50014-2

REV	DESCRIPTION	APPROVAL	DATE
5	DRAWN ON CAD		1/28/03



- 1) PREP INSIDE OF CAVITY AND HULL 6" AROUND CAVITY, BY DEWAXING, GRINDING, AND SOLVENT WIPE DOWN.
- 2) DETERMINE STRUT ANGLE BY SETTING STRUT IN PLACE W/ SHAFT.
- 3) DRILL 3/8" DIA. HOLES IN HULL THRU STRUT.
- 4) REMOVE STRUT AND SET IN PLACE W/ REINFORCED RESIN AND FIBER MIX BETWEEN STRUT AND HULL.
- 5) BOLT STRUT IN PLACE -- BED BOLTS AND WASHERS WITH URETHANE SEALANT INSIDE HULL.
- 6) FILL AND FAIR STRUT TO HULL W/ RESIN / MICRO BALLOON MIX.
- 7) GLASS OVER FILLER W/ V.E. RESIN AND
  - (1) 0.75 OZ MATT
  - (1) 7.5 OZ CLOTH
  - OVERLAP ON HULL 6" -- FEATHER EDGE
- 8) GEL COAT TO MATCH HULL

**PROPRIETARY INFORMATION**  
 THE DESIGN, INFORMATION, AND DATA CONTAINED HEREON ARE PROPRIETARY AND ARE SUBMITTED BY CATALINA YACHTS AND SHALL NOT BE DISCLOSED, COPIED, OR REPRODUCED IN WHOLE OR IN PART, FOR ANY PURPOSES WHATSOEVER, WITHOUT THE PRIOR WRITTEN PERMISSION OF CATALINA YACHTS, 21700 VICTORY BLVD., WOODLAND HILLS, CALIFORNIA 91367. THIS DOCUMENT SHALL BE RETURNED TO CATALINA YACHTS IMMEDIATELY UPON REQUEST BY CATALINA YACHTS.

UNLESS OTHERWISE SPECIFIED  
 DIMENSIONS ARE IN INCHES  
 GENERAL TOLERANCES  
 ANGLES:  $\pm 0.5^\circ$   
 X.X:  $\pm 0.1$   
 X.XX:  $\pm 0.01$   
 X.XXX:  $\pm 0.005$   
 SURFACE FINISH: 6Y  
 DO NOT SCALE DRAWING

<b>Catalina Yachts</b>		21700 VICTORY BLVD. WOODLAND HILLS, CA 91367 -- (818) 834-7700	
SCALE: NONE	APPROVED BY:	DRAWN BY: K.W.N.	REVISED: 1/28/03
DATE: 12/11/80			
<b>EXTERNAL STRUT INSTALLATION</b>			
BOAT: CAT 28 THROUGH 400		DRAWING NUMBER: 300-50014-5	