

MD22L

Technical Data

Engine designation	MD22L
Crankshaft power kW (hp)	36.5 (50)
Propeller shaft power ¹⁾ , kW (hp)	36 (49)
Full throttle operating speed, rpm	2600–3000
Displacement, l (in ³)	2.0 (122)
Number of cylinders	4
Bore, mm (in.)	84 (3.3)
Stroke, mm (in.)	89 (3.5)
Compression ratio	17:1
Dry weight with reverse gear	
HS25A, kg (lb)	253 (558)
MS25A, kg (lb)	242 (534)
MS25L, kg (lb)	240 (529)
Dry weight with sail drive	
S-Drive 120S, kg (lb)	248 (547)

Duty rating: R5–R3

Technical data according to ISO 8665. Fuel with a lower calorific value of 42,700 kJ/kg and density of 840 g/liter at 15°C (60°F). Merchant fuel may differ from this specification which will influence engine power output and fuel consumption.

1) With MS25L

Technical description:

Engine and block

- Cylinder block manufactured from high grade cast iron and cylinder head and pistons of aluminum alloy

- Pistons fitted with two compression rings and a single oil scraper ring
- Overhead camshaft
- Replaceable, hardened valve seats in cylinder head
- Flexible coupling on flywheel

Lubrication system

- Spin-on full flow oil filter
- Separate oil scavenger pipe
- Closed circuit crankcase ventilation

Fuel system

- Flange mounted injection pump of rotor type with mechanical regulator for accurate speed control
- Feed pump with hand primer
- Spin-on type fine fuel filter

Exhaust system

- Freshwater-cooled exhaust manifold and seawater-cooled exhaust elbow

Cooling system

- Freshwater cooling system governed by thermostat and circulation pump
- Tubular heat exchanger with integral expansion tank
- Coolant system prepared for hot water outlet fittings
- Impeller pump for seawater system

Electrical system

- 12V, two-pole, corrosion-protected electrical system
- 14V/60A marine alternator
- Charging regulator with electronic sensor for voltage drop compensation

- Electrically operated stop
- Glow plugs for excellent cold starting
- Electric starter motor (1.8 kW output)
- Extension cable harness with plug-in connection available in various lengths
- Choice of instrument panels or separate instruments

Transmissions:

HS25A Hydraulic – drop center with 8° down angled output shaft. Trolling valve kit available.

- Ratio 2.29:1 and 2.71:1 (RH and LH rotation).

MS25A Mechanical – drop center with 8° down angled output shaft.

- Ratio 2.23:1/2.74:1 (RH/LH) and 2.74:1/2.74:1 (RH/LH).

MS25L Mechanical – drop center with straight output shaft.

- Ratio 2.3:1/2.1:1 (RH/LH) and 2.74:1/2.72:1 (RH/LH).

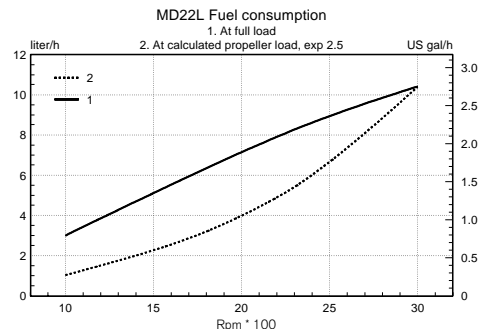
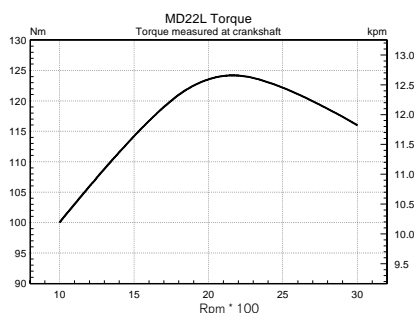
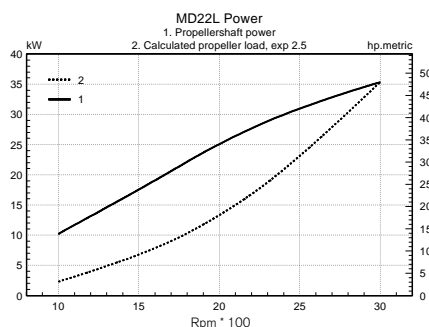
120S – S-drive.

- Ratio 2.2:1.

Accessories

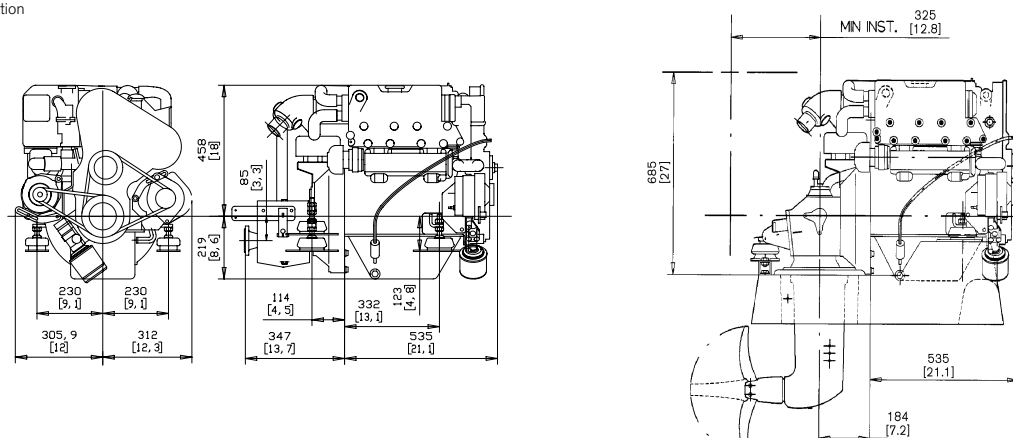
An extensive range of accessories are available. For detailed information, please see Accessory catalogs. Contact your local Volvo Penta dealer for further information.

Not all models, standard equipment and accessories are available in all countries. All specifications are subject to change without notice.



Dimensions MD22L/MS25L/120S

Not for installation



VOLVO PENTA

AB Volvo Penta
SE-405 08 Göteborg, Sweden