

HUNTER-22  
 BILL OF MATERIAL  
 CONTROL PANEL

5-18-08

COMPANIONARY STEPS

A. FACE BOARD 16" x 10" x 1/2" SOLID TEAK/IPLE

B. BOTTOM BOARD 15 3/4" x 10" x 1/2" PLY TEAK/IPLE (THICK)

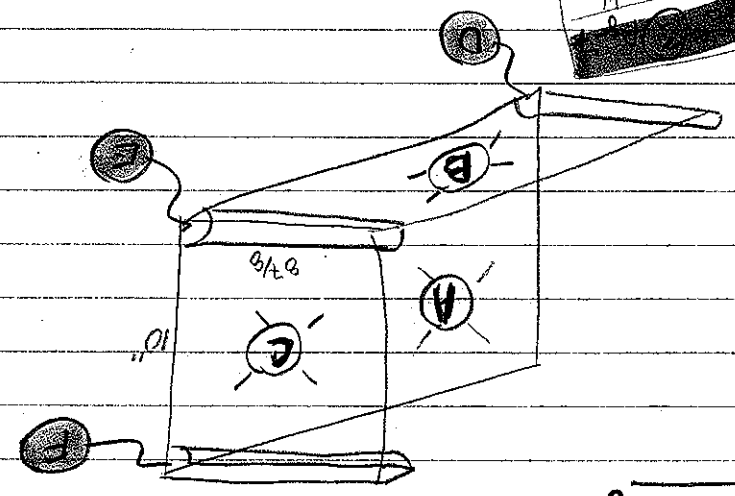
C. RIGHT BOARD 10" x 8 7/8" x 1/2" PLY TEAK/IPLE (THICK)

LOWER-LEFT CLEAR 9 1/8" x 3/4" x 3/4" MAHOGANY/IPLE

LOWER-RIGHT CLEAR 8 7/8" x 3/4" x 3/4" MAHOGANY/IPLE

UPPER-RIGHT CLEAR 8 7/8" x 3/4" x 3/4" MAHOGANY/IPLE

CUTTING PLAN:



PC. (B) 7 1/4" x 2 1/2" ⇒ 16" x 4" = 64" ⇒ 1" XTRA (2 1/2" WIDE)

PC. (D) 10" x 3" = 30" ⇒ 63 1/2" XTRA (3 1/4" WIDE)

PC. (A) ⇒ 16" x 4" = 64" ⇒ 16" XTRA

P-10E

# HUNTER-22

POWER DISTRIBUTION PANEL

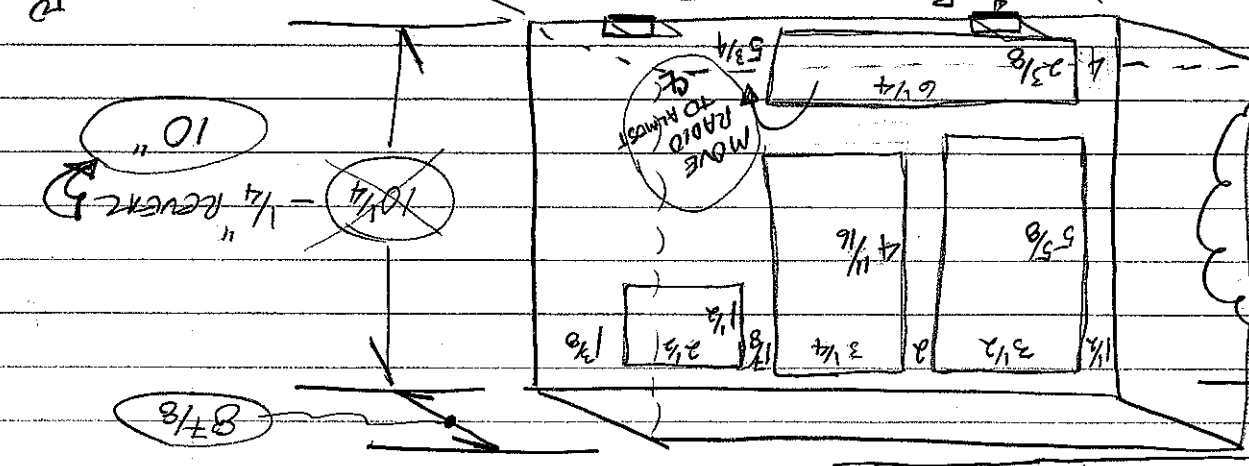
5-15-08

OPENINGS

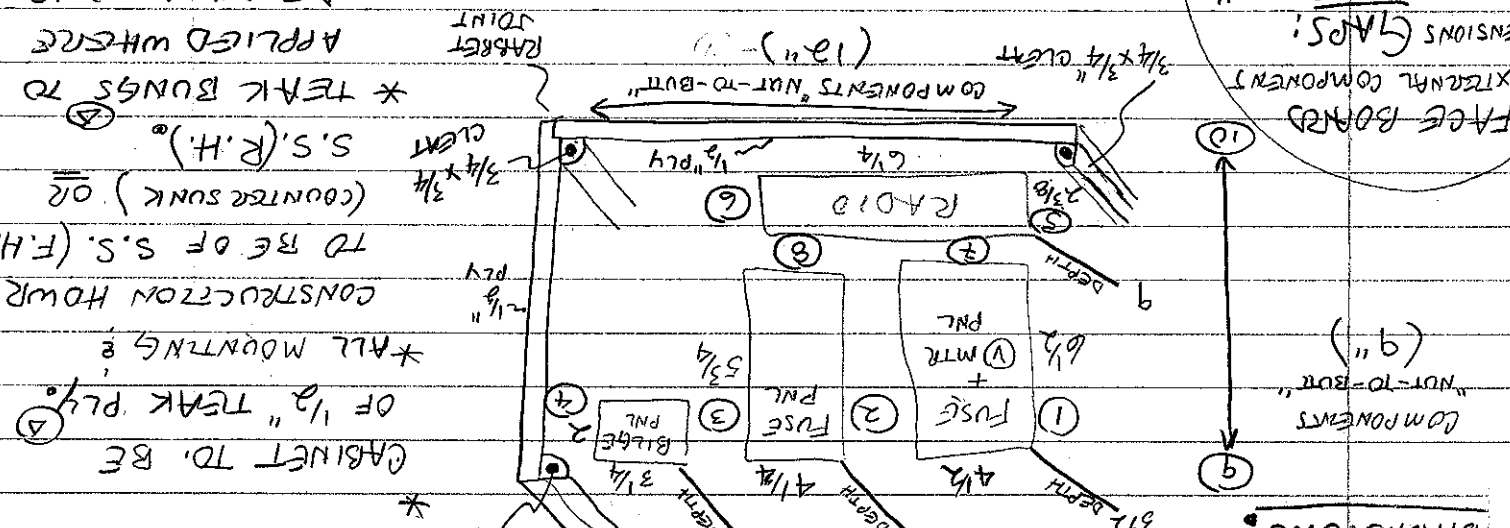
CONSIDERING MOUNTING & S:

Door

SEE PAGE 3 FOR CUTTING PLANS



COMPONENT DIMENSIONS: "EXTERNAL" = COMPONENT DIMENSIONS: "NUT-TO-END" (9")



FACE BOARD EXTERNAL COMPONENT DIMENSIONS (9")

- 10 3/4"
- 9 3/8"
- 8 1/2"
- 7 1/4"
- 6 5/4"
- 5 4"
- 4 1"
- 3 1"
- 2 1"
- 1 1"

\* CLEATS TO BE APPLIED WHERE DEPTH ALLOWED. MADE OF IPE WOOD. (GEN. WORK) \* (TYPE 'BUNGS) ... (TYPE 'RESUN IPE)

\* TEAK BUNGS TO BE APPLIED WHERE DEPTH ALLOWED. MADE OF IPE WOOD. (GEN. WORK) \* (TYPE 'RESUN IPE)

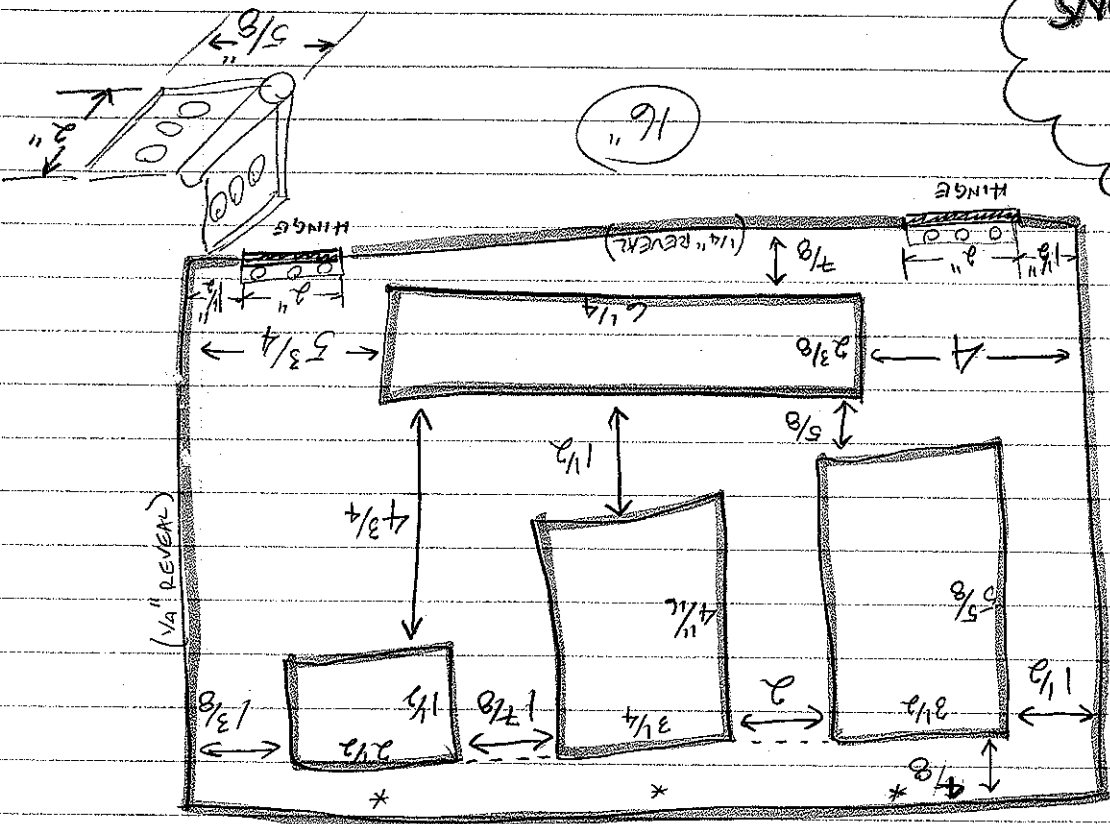
\* ALL MOUNTING OF 1/2" TEAK PLY. CABINET TO BE CONSTRUCTION HOW TO BE OF S.S. (F.H.) (COUNTERSUNK) OR S.S. (R.H.)

**DIMENSIONS**

**CUTTING**

**FACE**  
**(BOARD)**

**PC (A)**



**10"**

- 10"
- 13 3/8
- 1 3/8
- 2 7/8
- 1 7/8
- 3 3/8
- 2
- 5/8
- 5 5/8
- 3 4/8
- 1 4/8

**DIMENSIONS**

1/4" EXPOSURE ON BOTTOM.

1/4" ROUND OVER ALL EDGES

1/4" EXPOSURE ON EXISTING SIDE.

1/4" EXPOSURE ON SIDE.

BUTT TO FIBERGLASS LINER.

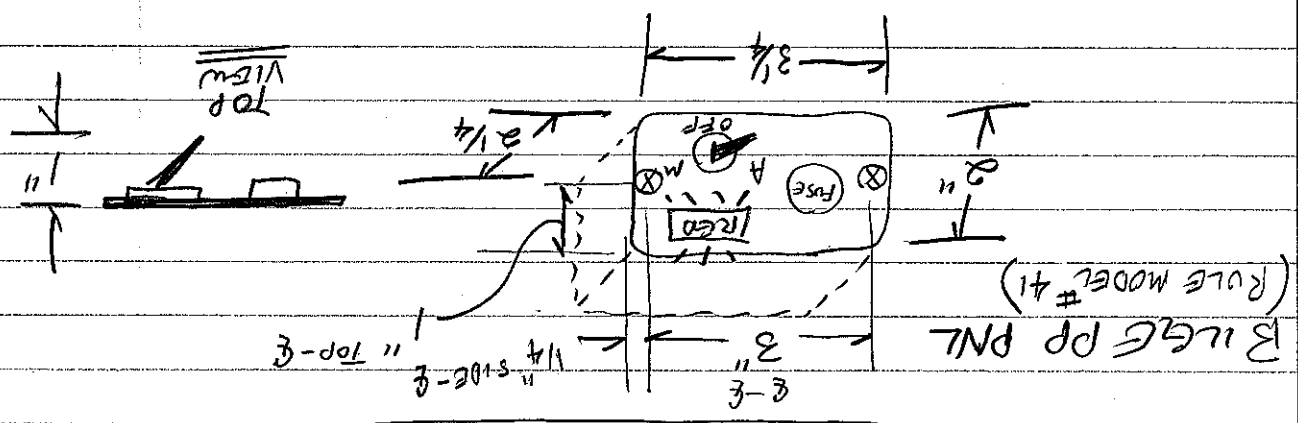
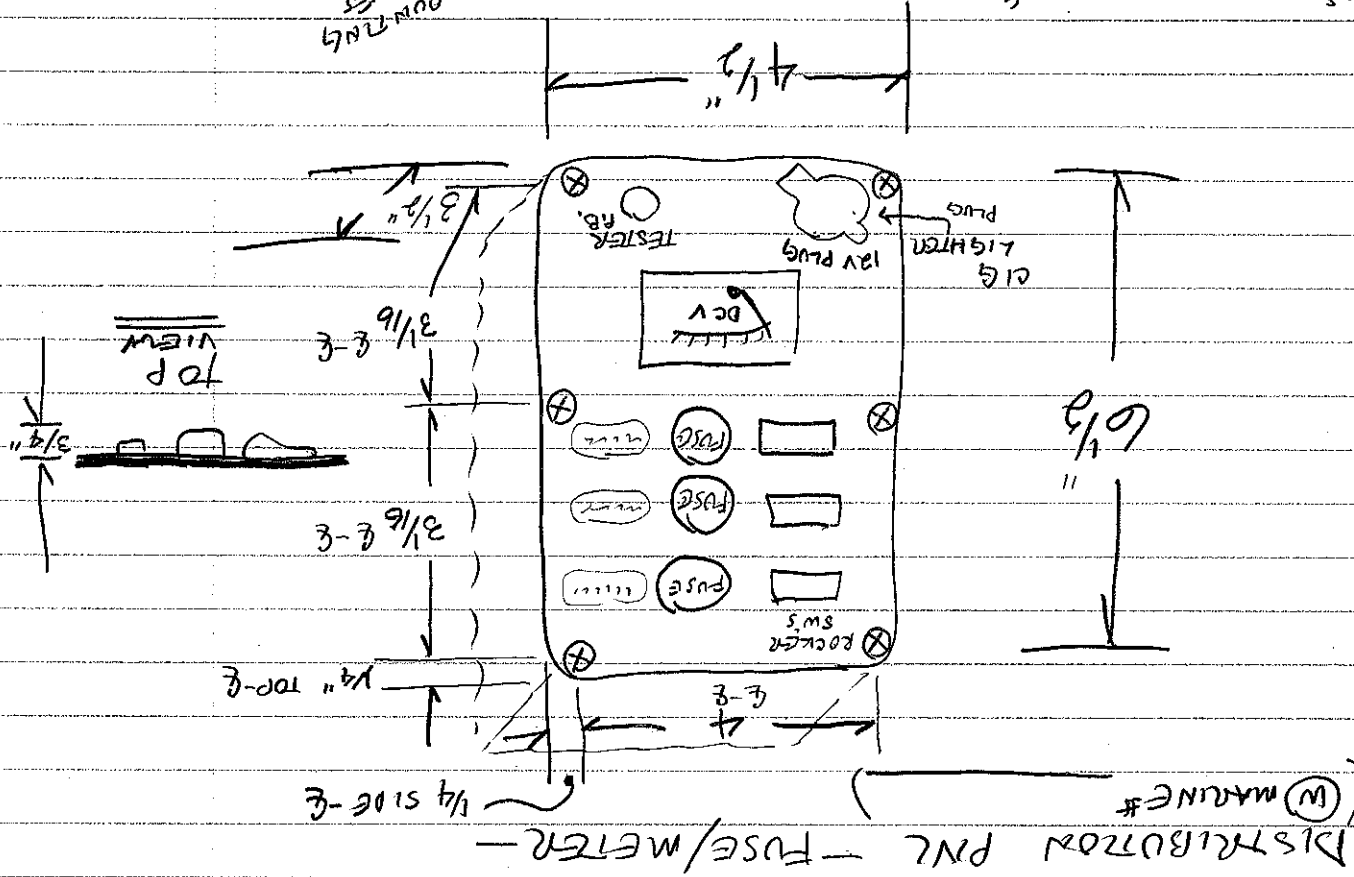
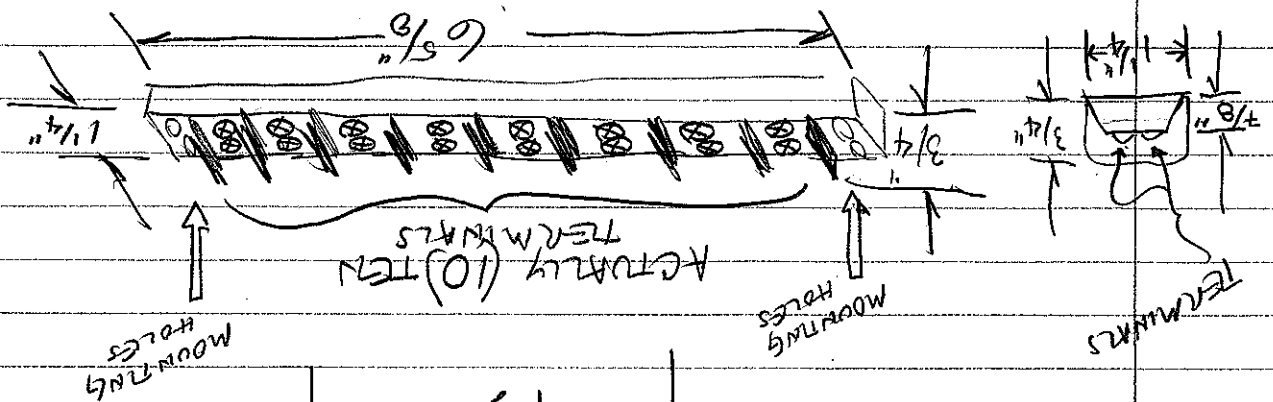
Power Distribution Panel

FACE BOARD:  
5-15-08

HUNTER-22

Fig 30E



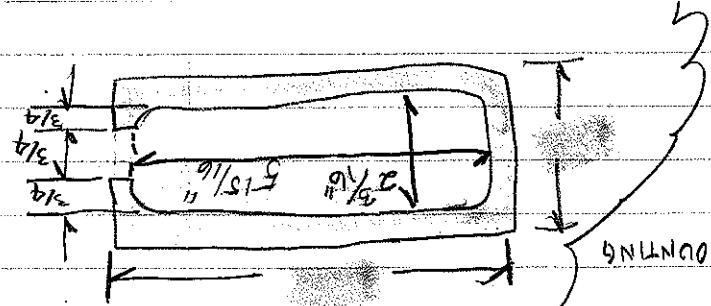


COMPONENT DIMENSIONS

5-15-08

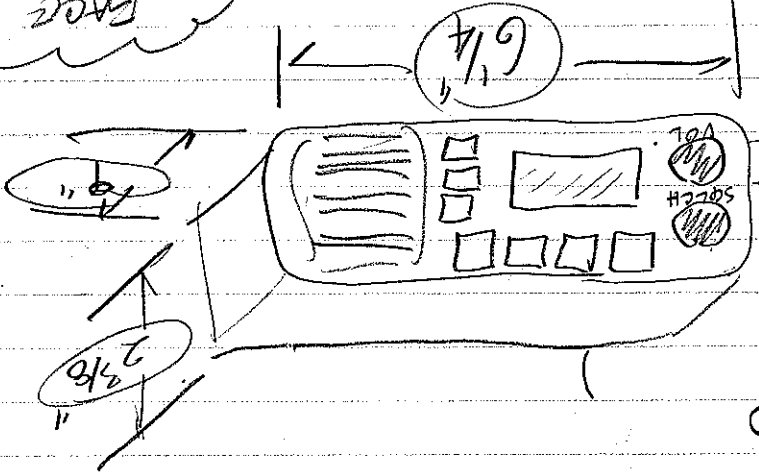
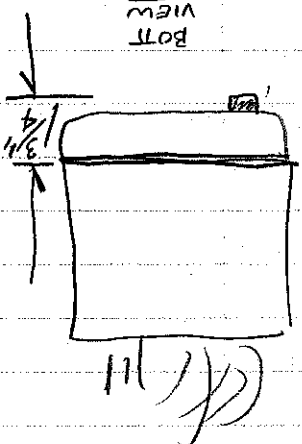
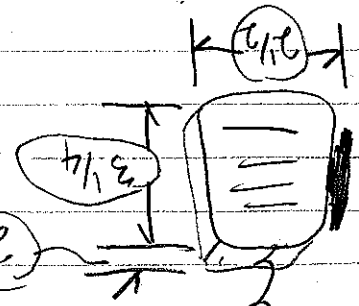
HUNTER-22

P 506

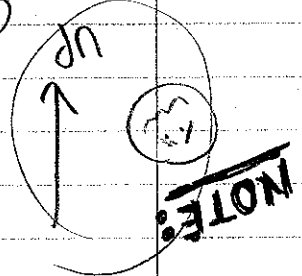


FACE PLATE:

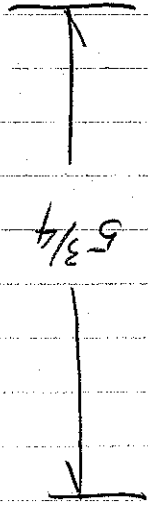
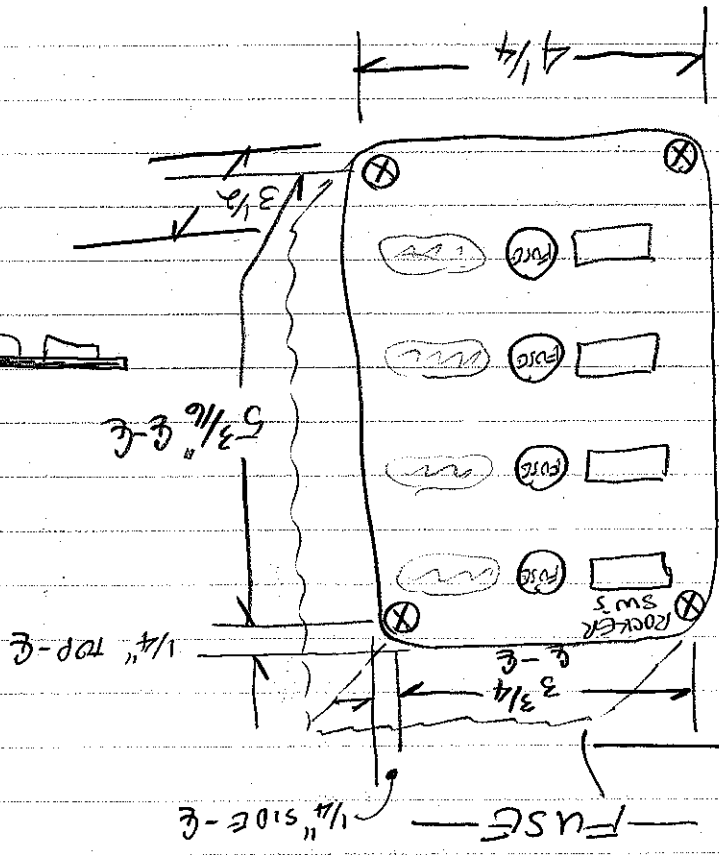
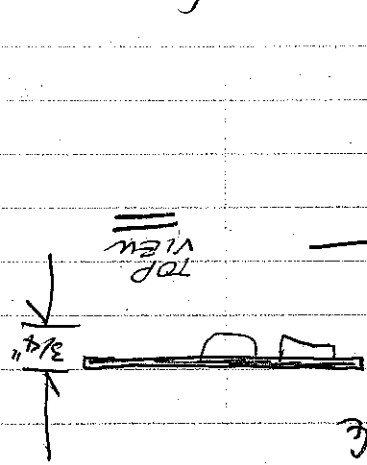
INCLUDES MOUNTING CLIP



VHF RADIO  
(UNIDEN #)



NOTE:



DISTRIBUTION PNL - FUSE - 1/4" SIDE - E  
 (M) MARKING #

COMPONENT DIMENSIONS

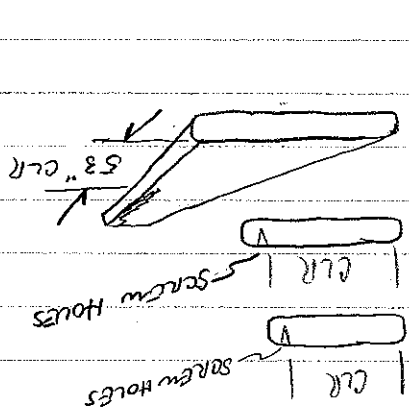
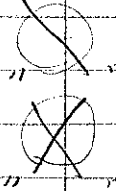
5-15-08

HUNTER-22

Pg 602

≡ PARTIALLY USED

≡ USED

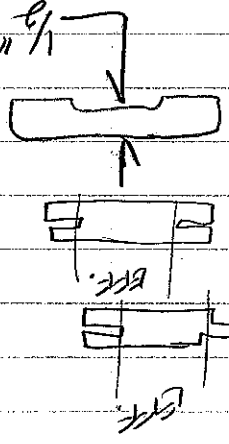


- 7 1/2" x 5 3/8" x 3/8" (CLR FOR 5/8" THEN 1/8")
- 4 8" x 4 7/8" x 3/4" CLR (5 1/2")
- 4 9" x 4" x 3/4" CLR (4 5/8")

SEE PG 13  
 SEE PG 13  
 SEE PG 13  
 AS OF 5-19-08

- PC # ④: 2.11 BD.FT.
  - PC # ③: 1.25 BD.FT.
  - PC # ②: 1.17 BD.FT.
  - PC # ①: 1.27 BD.FT.
- 5.8 BD.FT.

RESAW INTO 1/2" THICK IPE



- ④ 3 1/2" x 3 1/4" x 5/8" (BASE BOARD)
- ③ 7 1/4" x 2 1/2" x 7/8" (GROOVE/GROOVE) THIN THIN
- ② 6 4/8" x 2 5/8" x 1/16" (GROOVE/GROOVE) (EFF.)
- ① 5 2" x 3 1/2" x 1/16" (EFF.)

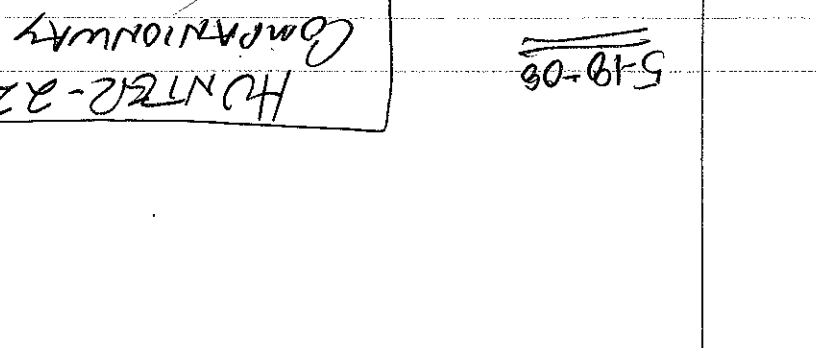
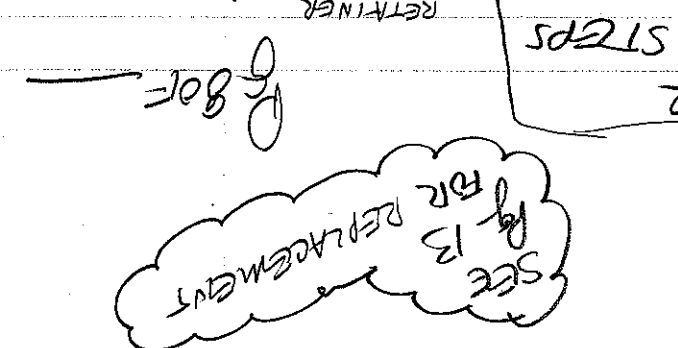
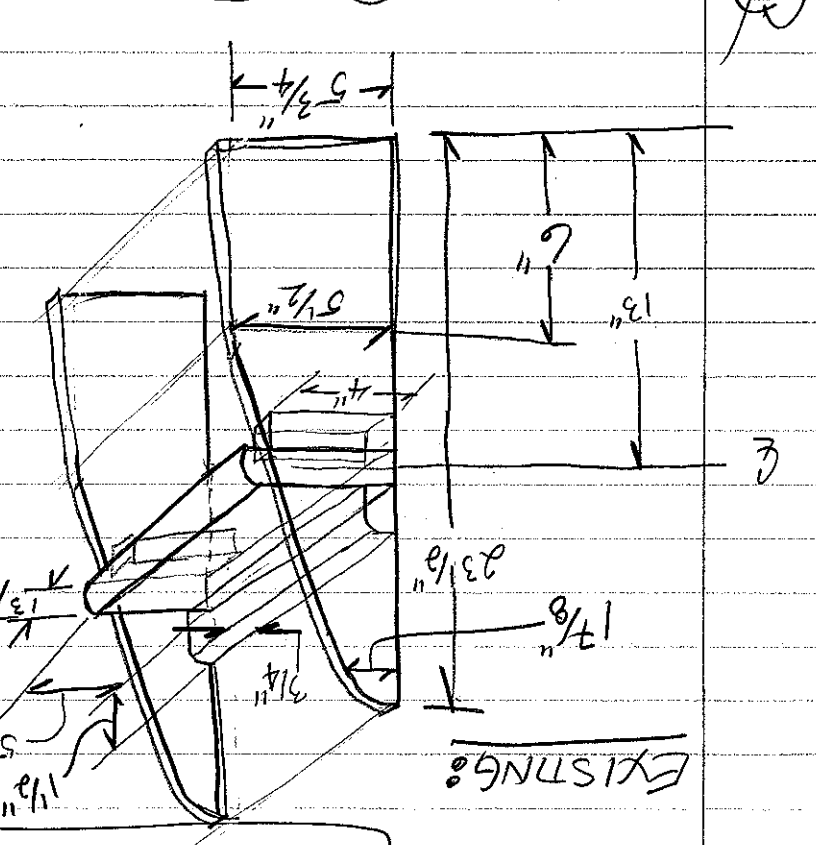
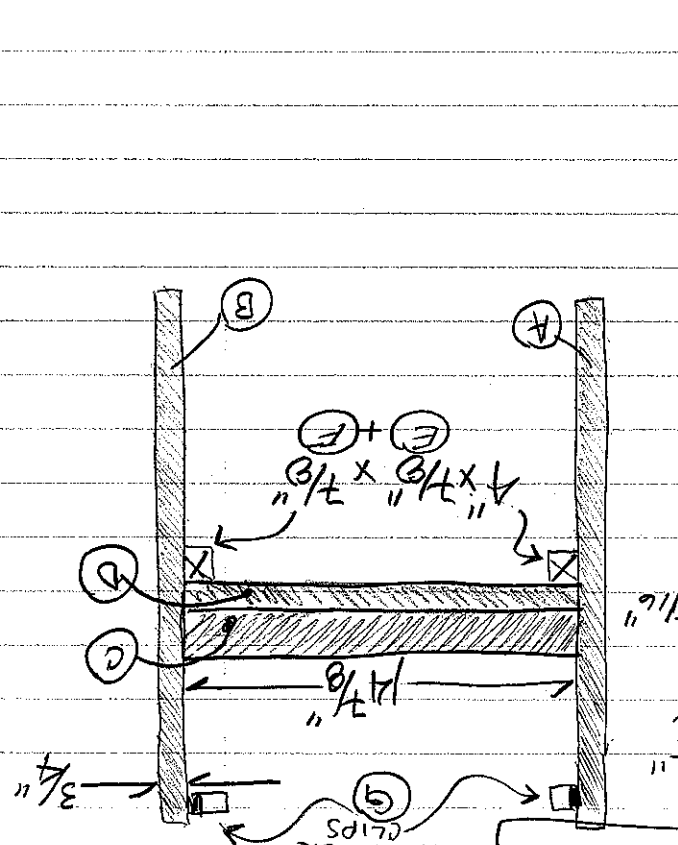
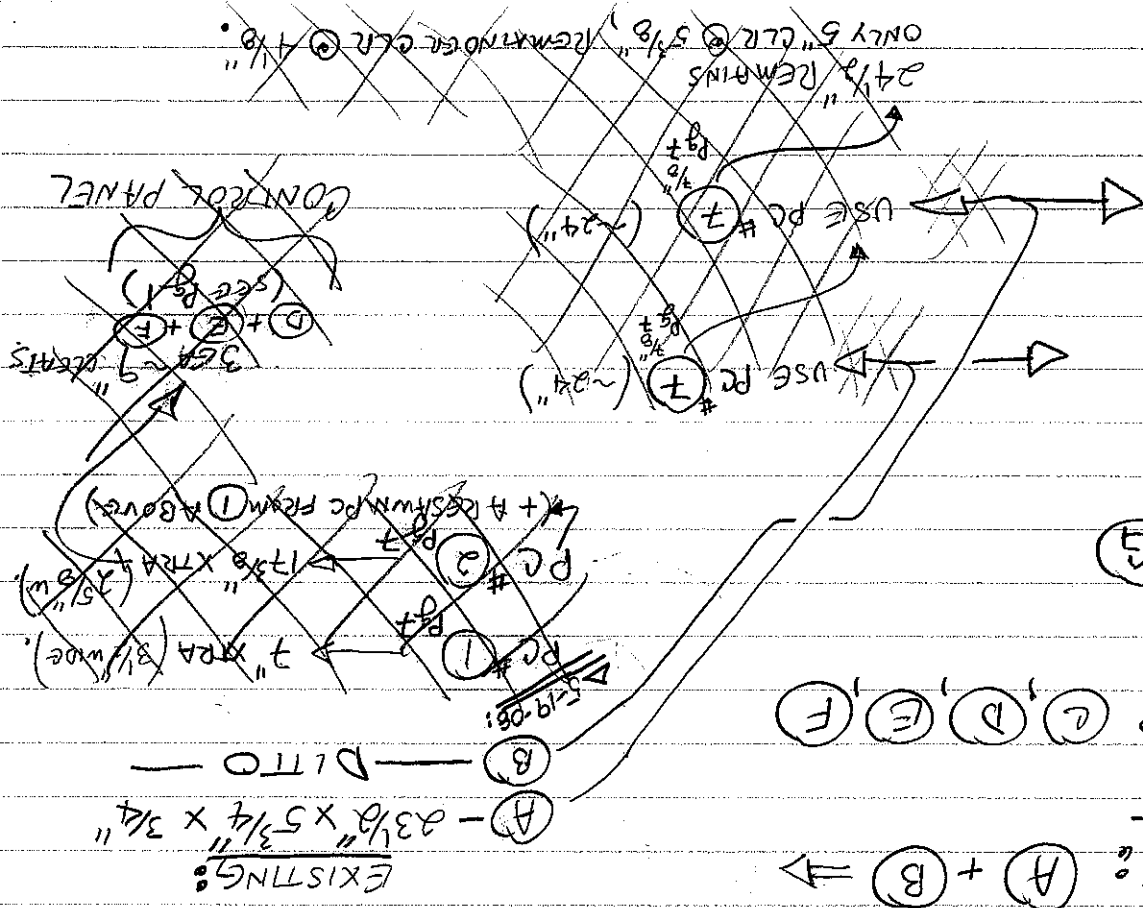
SEE PG 13  
 SEE PG 13  
 SEE PG 13

ON HAND

HUNTER-22 AVAILABLE IPE

5-18-08

P 90F



SEE pg 13 REPLACEMENT

HUNTER-22  
COMPANIONARY STEPS

KEEP: G

REFINISH: C, D, E, F

REPLACE: A + B

EXISTING: A - 2 3/8" x 5 3/4" x 3/4"  
B - 1 7/8" x 7/8" x 7/8"  
C - 1 7/8" x 7/8" x 7/8"  
D - 1 7/8" x 7/8" x 7/8"  
E - 1 7/8" x 7/8" x 7/8"  
F - 1 7/8" x 7/8" x 7/8"  
G - 1 7/8" x 7/8" x 7/8"

EXISTING: 5-19-08

CONTROL PANEL

USE PC # 7 (~24")

CONTROL PANEL

USE PC # 7 (~24")

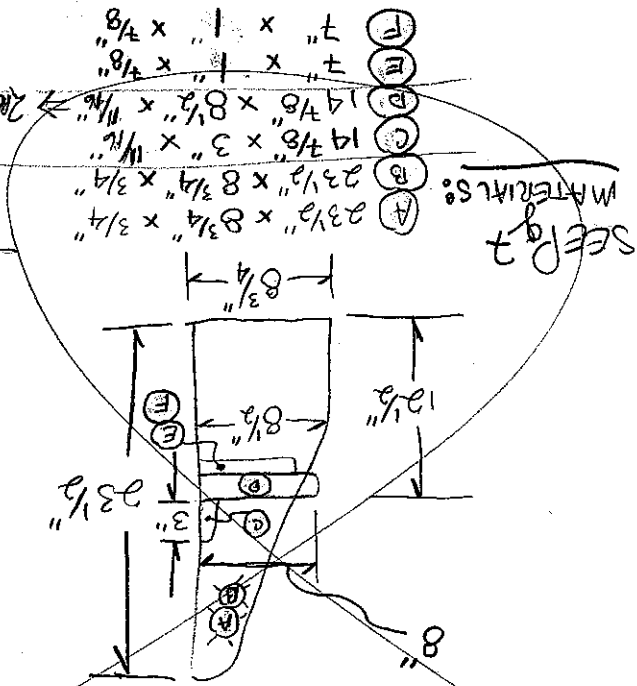
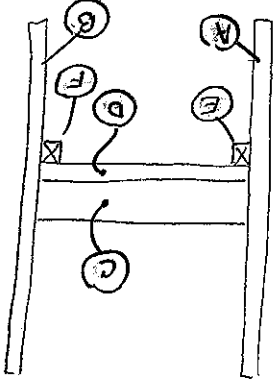
— Pg 90c

Page 100





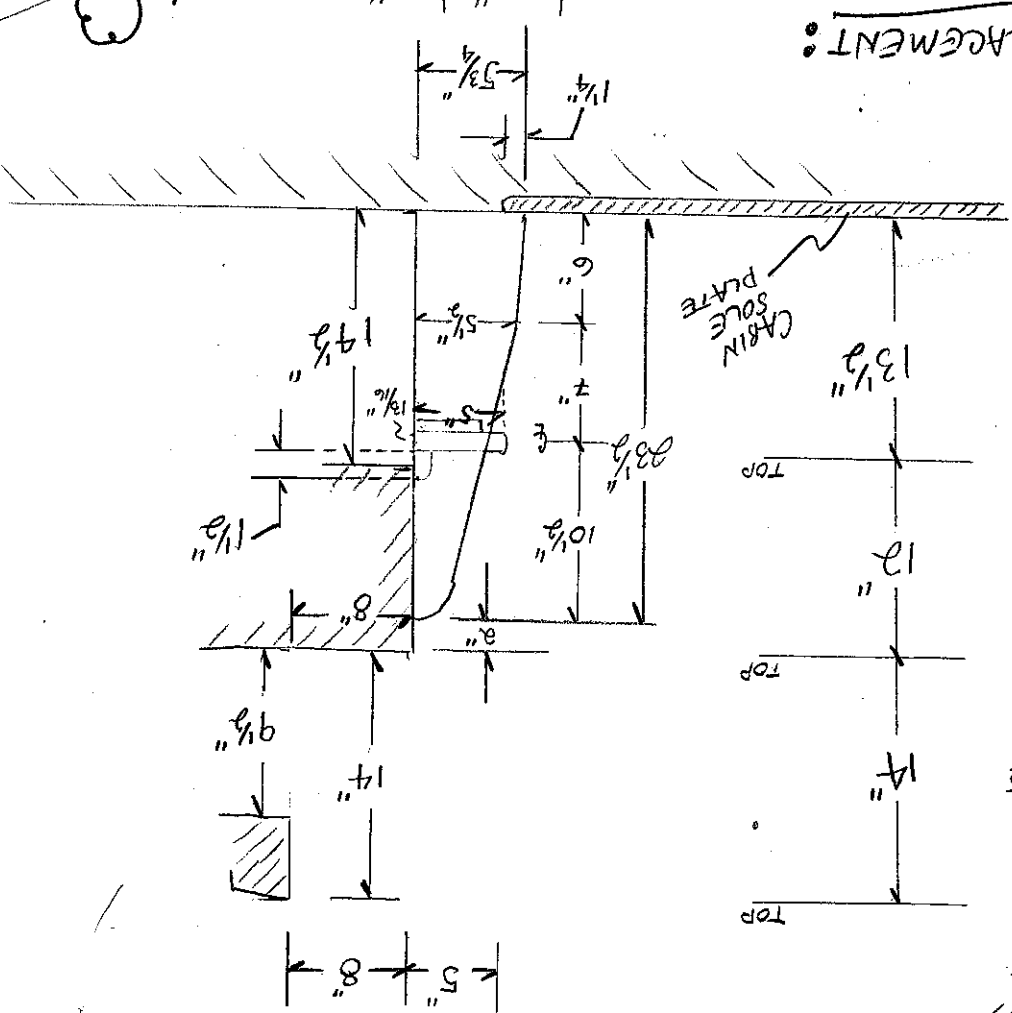
USE PIECES: (Pg 7)  
 #5 → 0" REMAINDER  
 #6 → 0" REMAINDER  
 #7 (4 1/8" W) → 4 1/2" REMAINDER  
 #8 → 2.3" REMAINDER  
 #9 → 6.5" REMAINDER



17"  
 13"  
 12 1/2"

INSTRUCED  
 6/17/08  
 -CJR

REPLACEMENT:



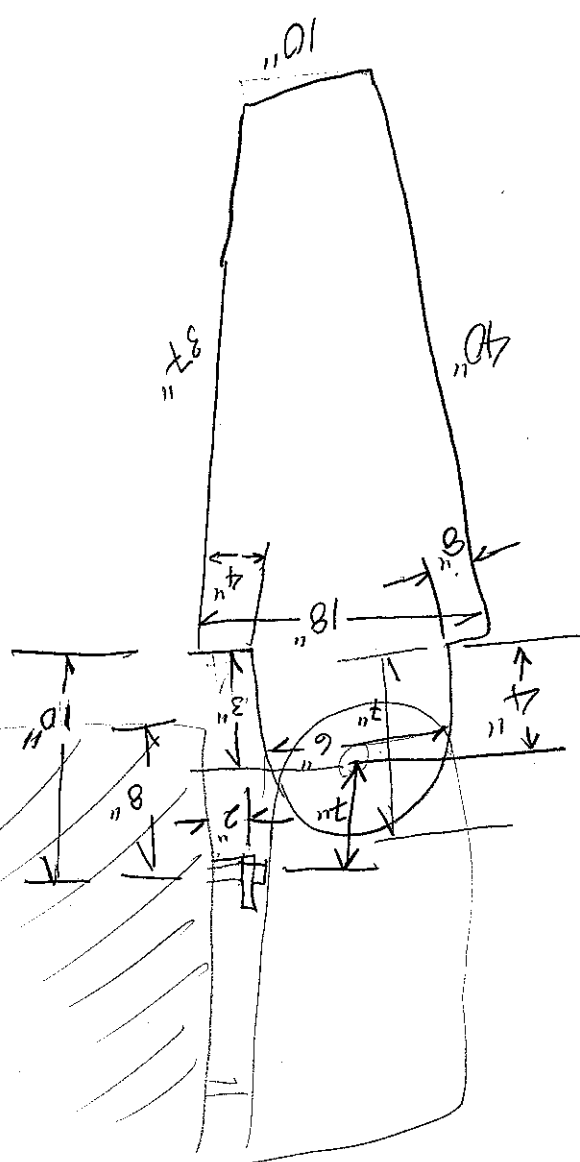
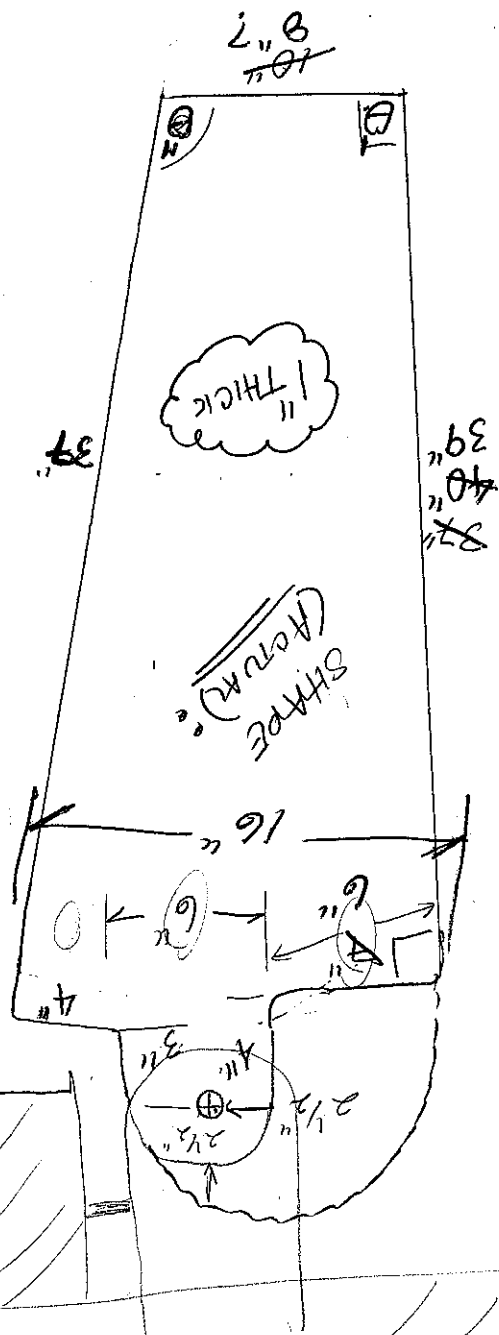
13 1/2"  
 12"  
 14"  
 TOP  
 TOP  
 TOP

$\frac{5}{12} = 0.41$   
 $\frac{8}{14} = 1.75$

EXISTING:  
 3 1/2" x 1"

05-24-08

Pg 130f



SOOPING DIMENSIONS

1/22/09

140F