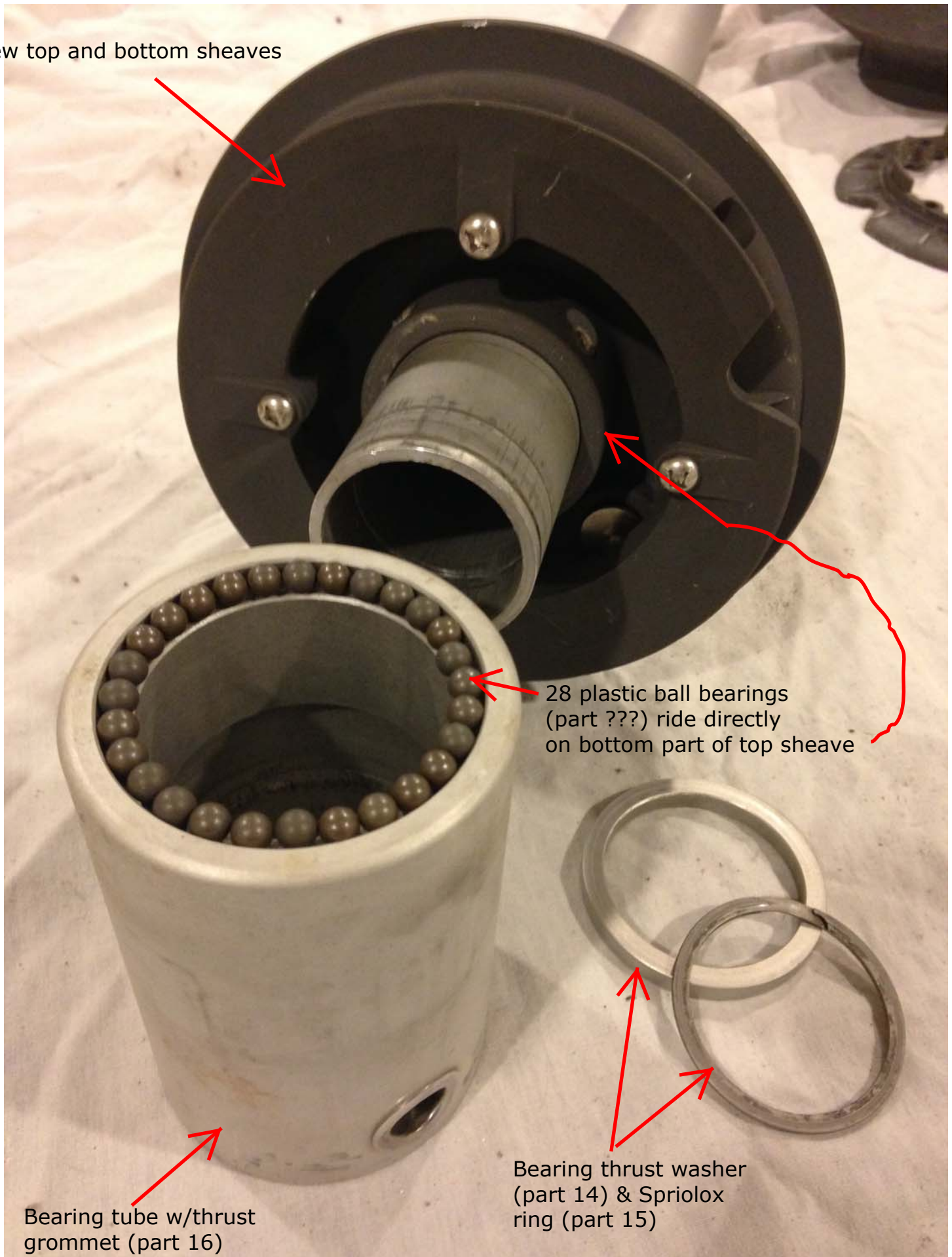


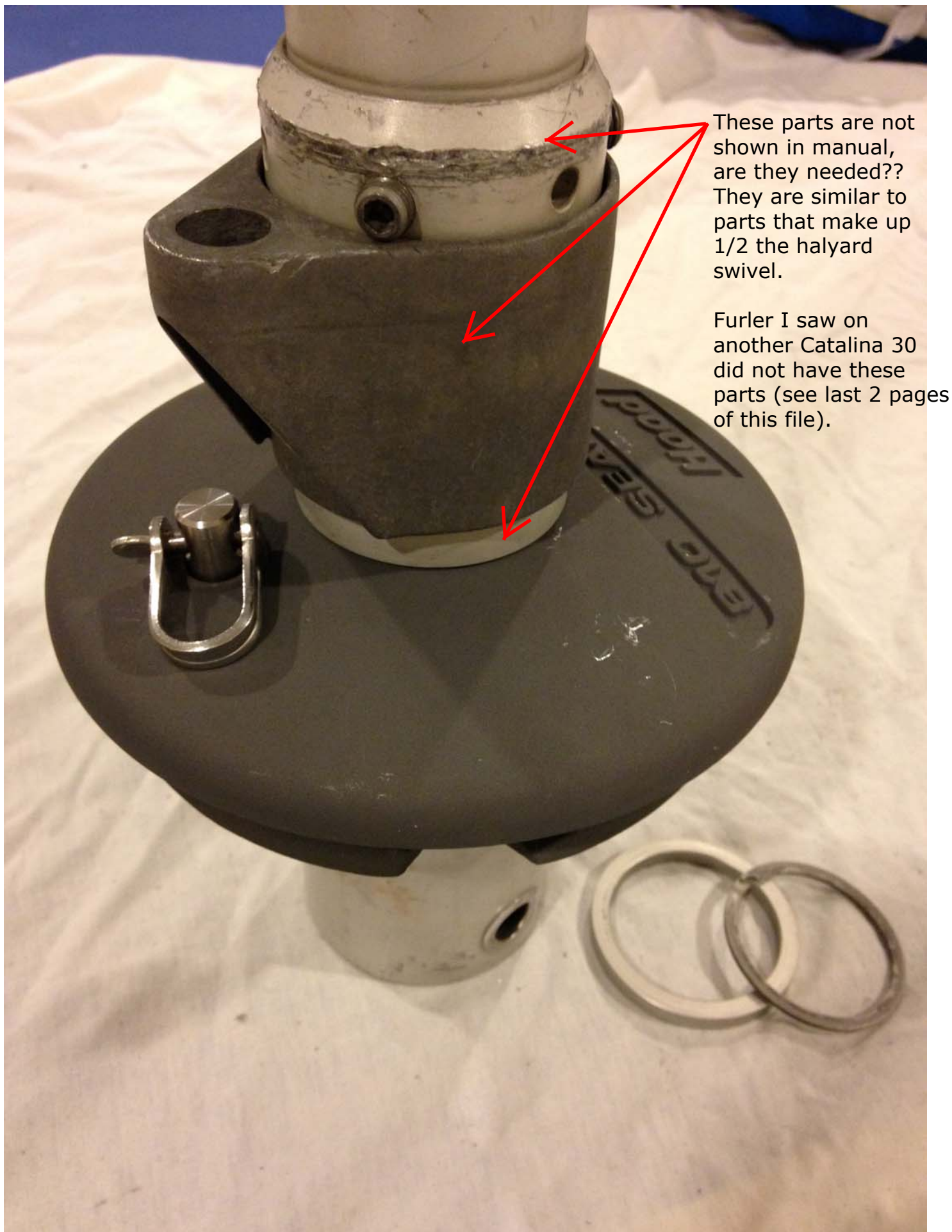
New top and bottom sheaves



28 plastic ball bearings  
(part ???) ride directly  
on bottom part of top sheave

Bearing tube w/thrust  
grommet (part 16)

Bearing thrust washer  
(part 14) & Sprilox  
ring (part 15)



These parts are not shown in manual, are they needed?? They are similar to parts that make up 1/2 the halyard swivel.

Furler I saw on another Catalina 30 did not have these parts (see last 2 pages of this file).



Ball bearing assemblies (part 13, #H6120)  
will fit in main part



Ball bearing assemblies (part 13, #H6120)  
will also fit in the ends of part 16, bearing tube w/grommet







Stop collar





