

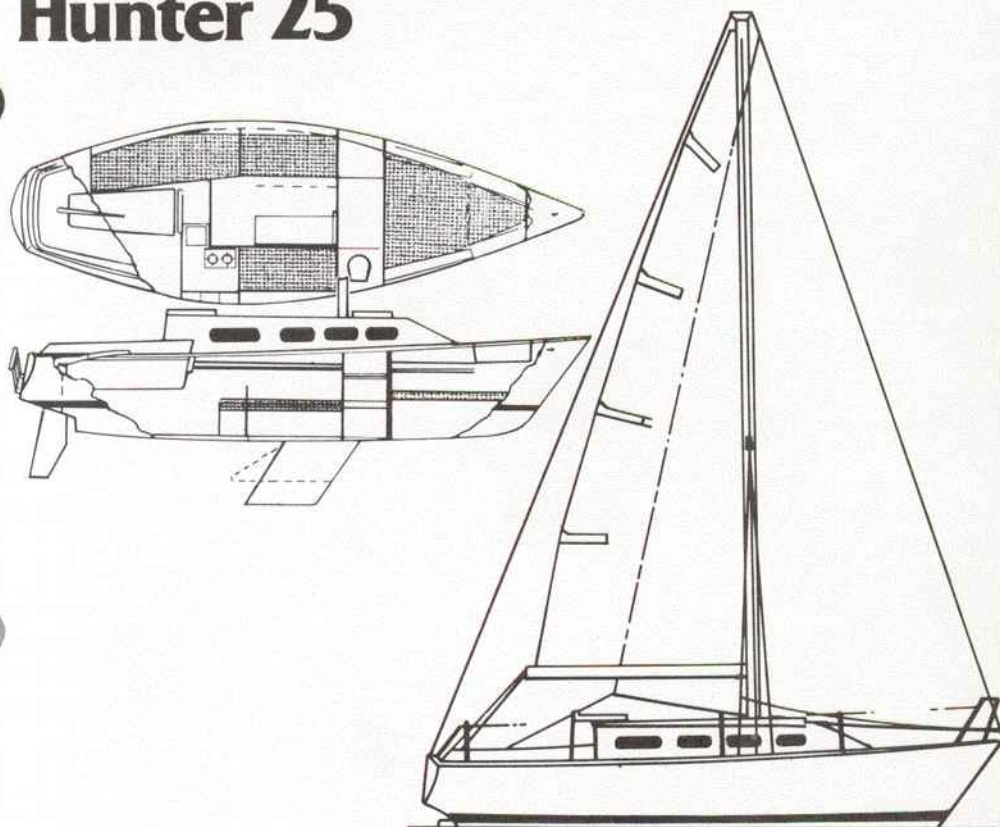
Hunter 22



SPECIFICATIONS:

E (Mainsail foot)	8'9"	2.67 m.
J (Foretriangle base)	9'0"	2.74 m.
P (Mainsail luff)	23'6"	7.16 m.
I (Foretriangle ht.)	27'0"	8.23 m.
L.O.A.	22'3"	6.78 m.
L.W.L.	18'4"	5.59 m.
Beam	7'11"	2.53 m.
Sail area	225 sq. ft.	68.6 sq. m.
Displacement	2600 lbs.	1179.4 kg.
Ballast (cast internal)	1200 lbs.	544.3 kg.
Draft	board up 23"	58.4 cm.
	board down 5'0"	1.52 m.
Mast height	26'0"	7.92 m.
from waterline	30'3"	9.22 m.

Hunter 25

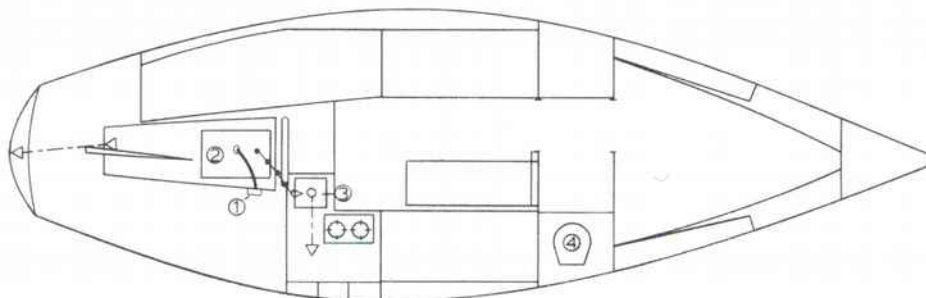


SPECIFICATIONS:

E (Mainsail foot)	8'0"	2.40 m.
J (Foretriangle base)	10'6"	3.15 m.
P (Mainsail luff)	24'9½"	7.54 m.
I (Foretriangle ht.)	30'0"	9.10 m.
L.O.A.	25'0"	7.60 m.
L.W.L.	20'2"	6.15 m.
Beam	8'0"	2.40 m.
Sail area	256 sq. ft.	23.78 sq. m.
Displacement	4,400 lbs.	1,995.80 kg.
Ballast	Shoal 2,000 lbs.	908.00
	Deep 1,800 lbs.	817.20 kg.
Draft	Shoal 2'11"	.88 m.
	Deep 3'11"	1.18 m.
Mast height	28'8"	8.70 m.
from waterline	34'1"	10.32 m.

Hunter 25

PLUMBING DIAGRAM

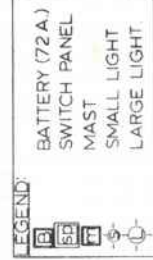
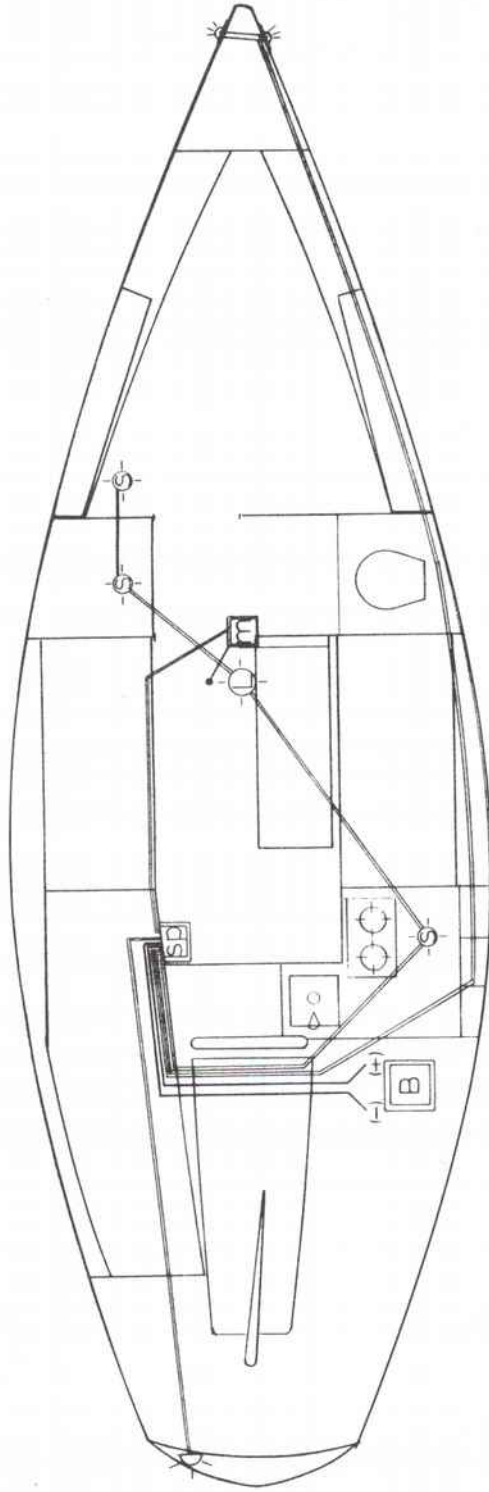


LEGEND:
① WATER FILL PLATE (UNDER STBD COCKPIT SEAT)
② 15 GAL. WATER BAG
③ GALLEY
④ MANSFIELD SANI-POTTI (PORTABLE)

SYMBOLS:
—•—•— 5/8" WHITE REINF. HOSE
- - - - - 1-1/2" SHIELD FLEX (GRN)
— 1-1/2" SHIELD VAC
W/HOSE CUFFS
△ THRU-HULL (PLASTIC) —
SIZE TO MATCH AT-
TACHED HOSE

Hunter 25

WIRING DIAGRAM (DC)



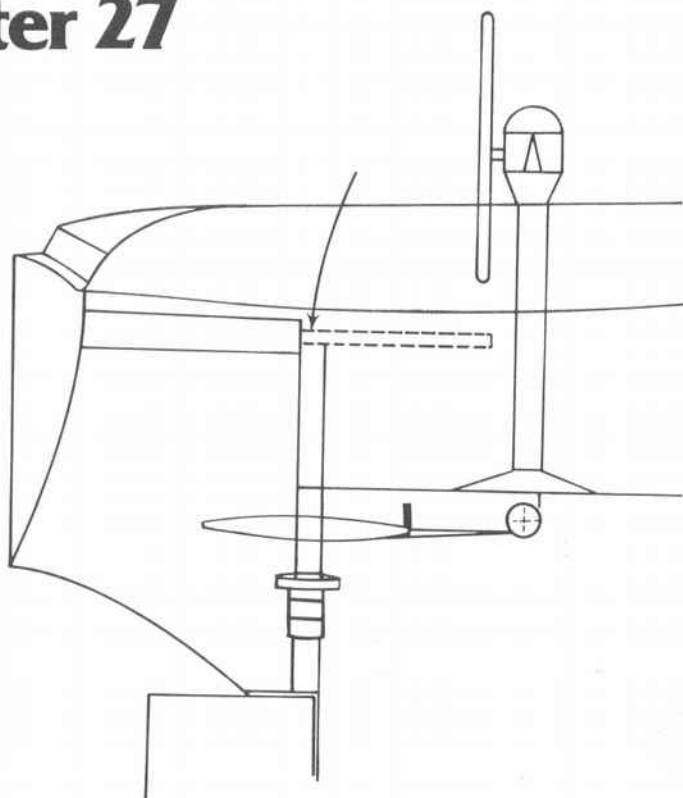
WIRING NOTES:

COLOR	GAUGE	APPLICATION
RED	6	BATTERY CABLE
WHITE	8	MAST GROUND
BLUE	16	CABIN LIGHTS
GREY	16	RUNNING LIGHTS (BOW)
WHITE	16	RUNNING LIGHTS (STERN)
RED	16	STEAMING LIGHTS

ALL LEADS ARE RUN WITH A BLACK GROUND OF EQUAL GAUGE. THESE ARE CONNECTED TO A COMMON GROUND AT THE SWITCH PANEL.

THE MAST GROUND HAS NO LEAD.

Hunter 27



IMPORTANT LOCATIONS

EMERGENCY TILLER INSTALLATION: lift lazarette seat, fit emergency tiller into top of rudder shaft.

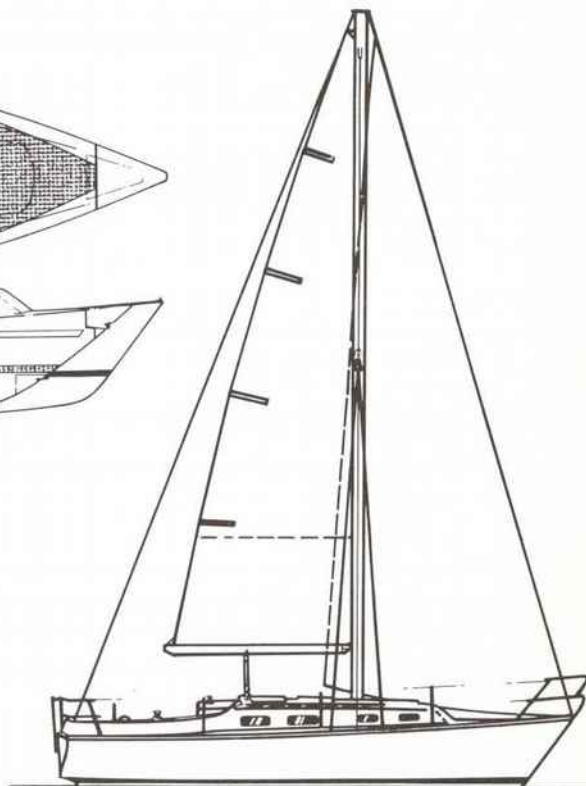
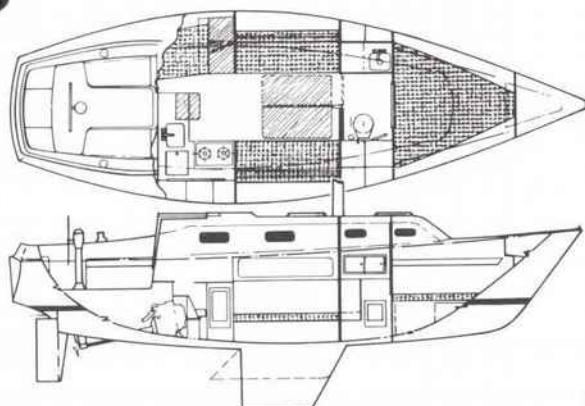
DIESEL FILLER: starboard cockpit coaming.

WATER FILLER: under V-berth in forepeak.

WASTE PUMP OUT: starboard side deck forward.

DOCKSIDE POWER OUTLET: outside port cockpit coaming.

Hunter 27

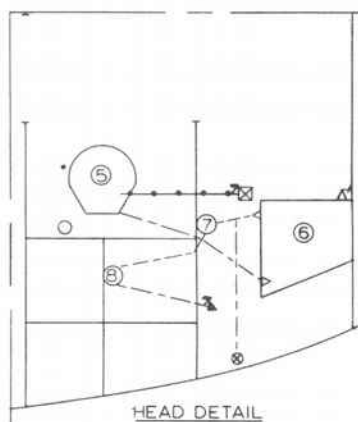
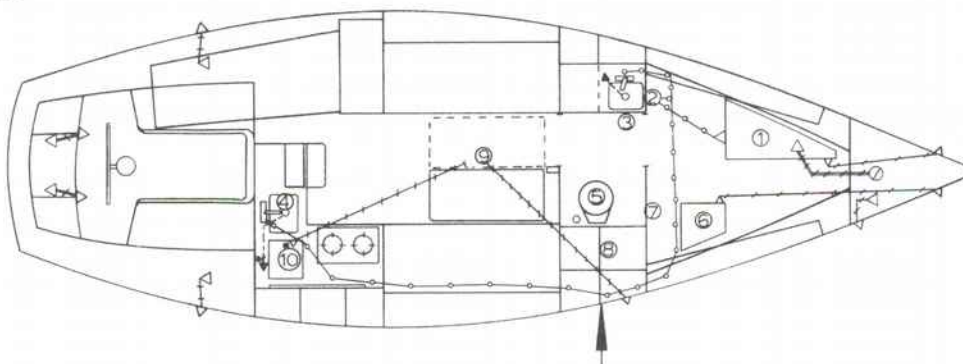


SPECIFICATIONS:

E (Mainsail foot)	9'11"	2.85 m.
J (Foretriangle base)	11'3"	3.37 m.
P (Mainsail luff)	32'4"	9.86 m.
I (Foretriangle base)	37'8"	11.48 m.
L.O.A.	27'2"	8.20 m.
L.W.L.	22'0"	6.70 m.
Beam	9'3"	2.77 m.
Sail area	360.2 sq. ft.	33.56 sq. m.
Displacement	7,000 lbs.	3,175.20 kg.
Ballast	Shoal 3,200 lbs.	1,452.8 kg.
	Deep 3,000 lbs.	1,362.0 kg.
Draft	Shoal 3'3"	.97 m.
	Deep 4'3"	1.27 m.
Mast height	36'3"	11.05 m.
from waterline	40'11"	12.47 m.
Headroom	6'1"	1.85 m.

Hunter 27

PLUMBING DIAGRAM



SUBSYSTEMS:
FRESH WATER
WASTE DISPOSAL
DRAINS

LEGEND:

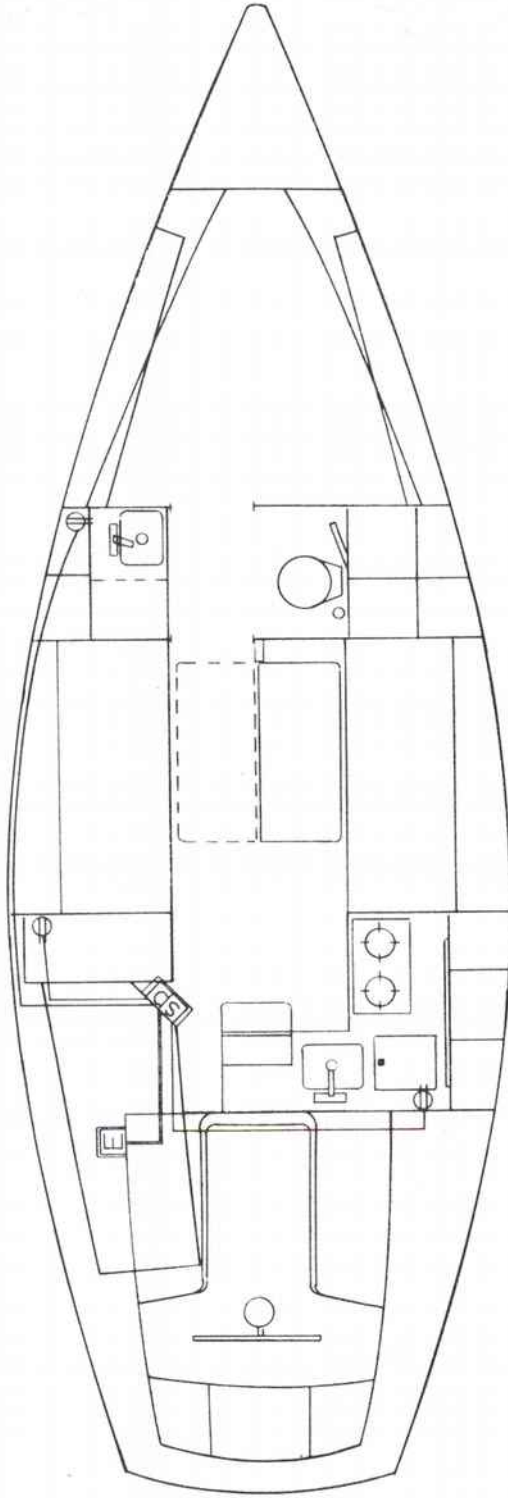
- ① FRESH WATER TANK
- ② WATER PUMP
- ③ VANITY
- ④ GALLEY
- ⑤ MANSFIELD HEAD
- ⑥ HOLDING TANK
- ⑦ N#10 WHALE GUSHER (HAND PUMP)
- ⑧ 1-1/2" VENTED LOOP (BRONZE)
- ⑨ BILGE PUMP
- ⑩ ICE BOX

HOSES & FITTINGS:

- 5/8" WHITE REINF. HOSE
- 5/8" BLACK HOSE (HEAD)
- 3/4" SHIELDVAC (W/CUFFS)
- 1-1/2" SHIELDVAC (W/CUFFS)
- 1-1/4" SHIELDFLEX (GREEN)
- 1-1/2" SHIELDFLEX (GREEN)
- △ THRU HULL (PLASTIC)
- ▲ THRU HULL (BRONZE)
- DECK PLATE (WATER)
- ⊗ DECK PLATE (WASTE)
- ⊠ SALT WATER PICKUP
- 7 GATE VALVE

Hunter 27

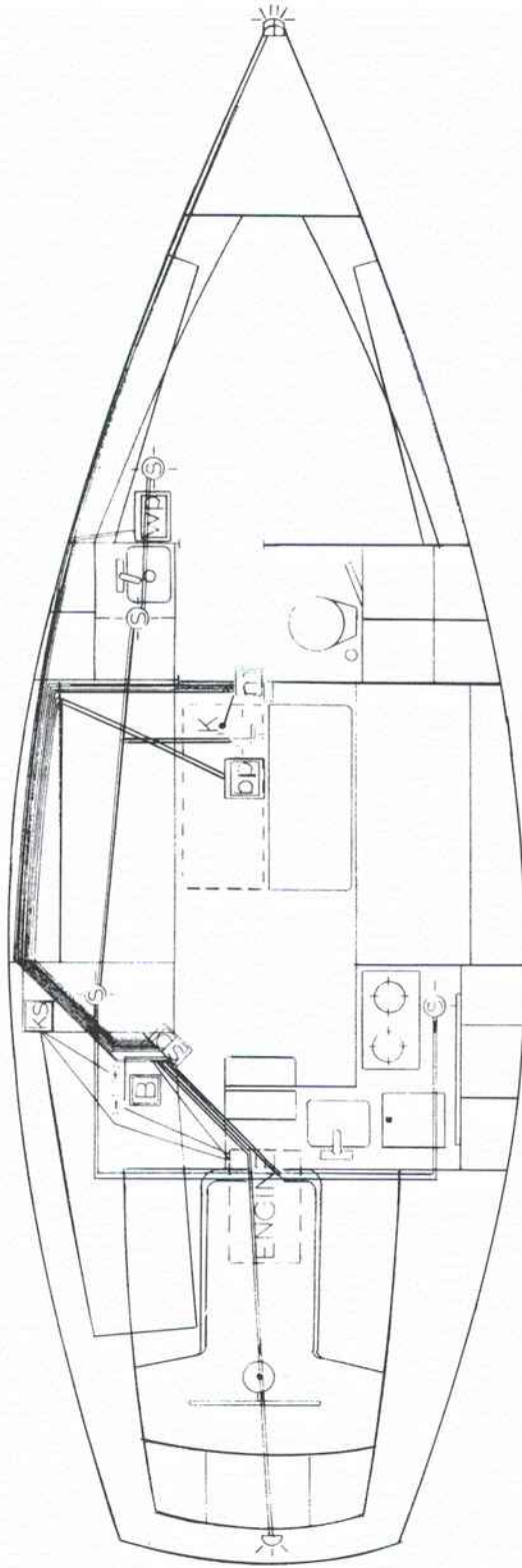
WIRING DIAGRAM (AC)



LEGEND:	
	ELECTRICAL DECK PLATE
	SWITCH PANEL
	110V OUTLET
	10/3 MARINE POWER CABLE (AC SUPPLY)
	14/3 MARINE POWER CABLE (TO OUTLETS)

Hunter 27

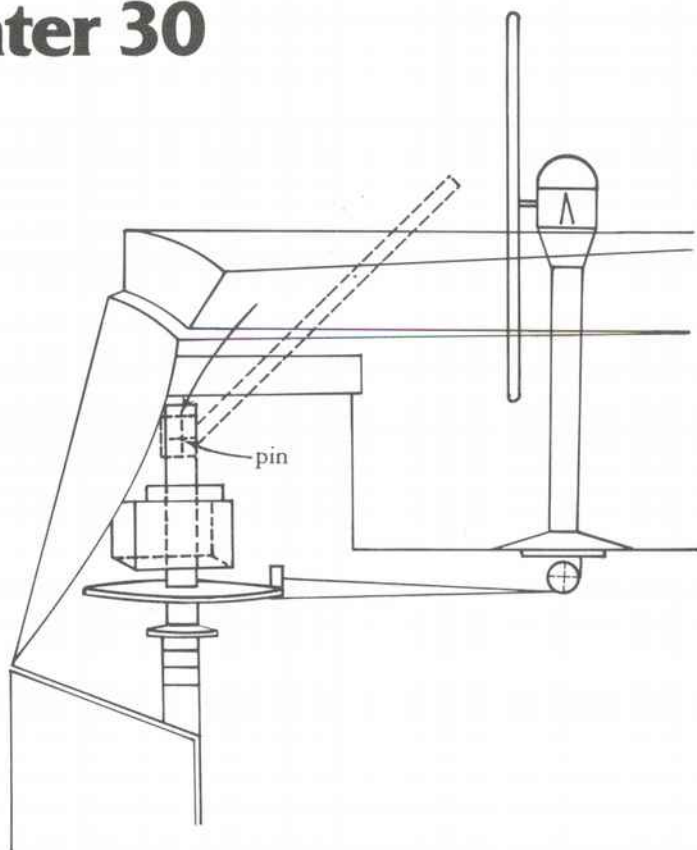
WIRING DIAGRAM (DC)



LEGEND	
	BATTERY (72 A.)
	SWITCH PANEL
	KEY SWITCH
	WATER PUMP
	BILGE PUMP (400 GPH)
	MAST POST
	SMALL LIGHT
	LARGE LIGHT
	KEEL

WIRING NOTES	
COLOR	GAUGE
RED	4
WHITE	8
RED	10
RED	12
BLUE	16
WHITE	16
GREEN	16
RED	16
BROWN	16
ALL LEADS 12 TO 16 GAUGE ARE RUN WITH A BLACK GROUND OF EQUAL GAUGE. THESE ARE CONNECTED TO A COMMON GROUND AT THE SWITCH PANEL WHICH IS GROUNDED TO THE BATTERY (-) WITH A 10 GAUGE BLACK WIRE.	
APPLICATION	
BATTERY CABLE / KEY SWITCH	
MAST GROUND	
DC SUPPLY TO SWITCH PANEL	
WATER PUMP	
CABIN LIGHTS	
RUNNING LIGHTS (BOW)	
RUNNING LIGHTS (STERN/COMPASS)	
STEAMING LIGHTS	
ANCHOR LIGHT	
BILGE PUMP	

Hunter 30



IMPORTANT LOCATIONS

EMERGENCY TILLER INSTALLATION: lift lazette seat, remove pin in rudder shaft, fit emergency tiller brackets over rudder shaft, re-insert pin.

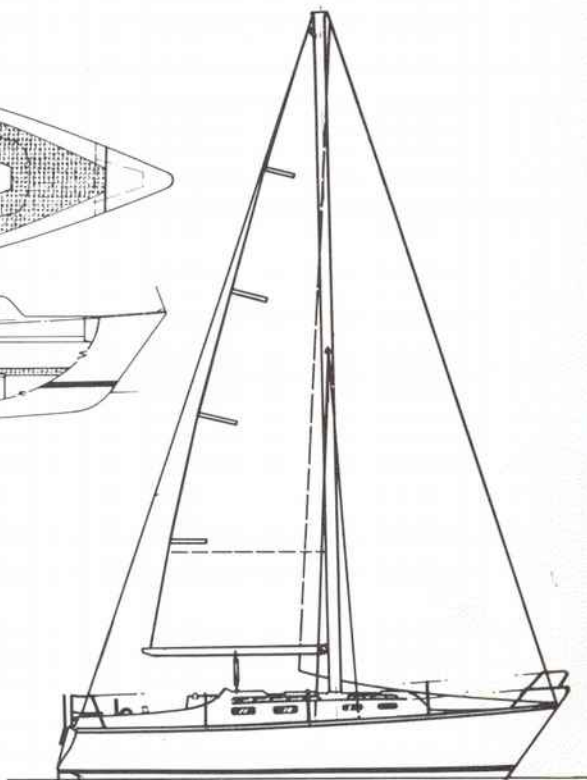
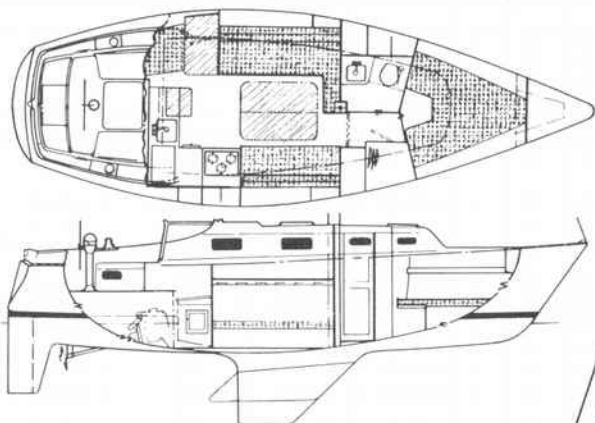
DIESEL FILLER: portside cockpit coaming.

WATER FILLERS: port and starboard side decks, amidships.

WASTE PUMP OUT: starboard side deck, forward.

DOCKSIDE POWER OUTLET: starboard cockpit coaming.

Hunter 30

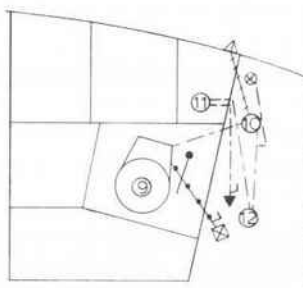


SPECIFICATIONS:

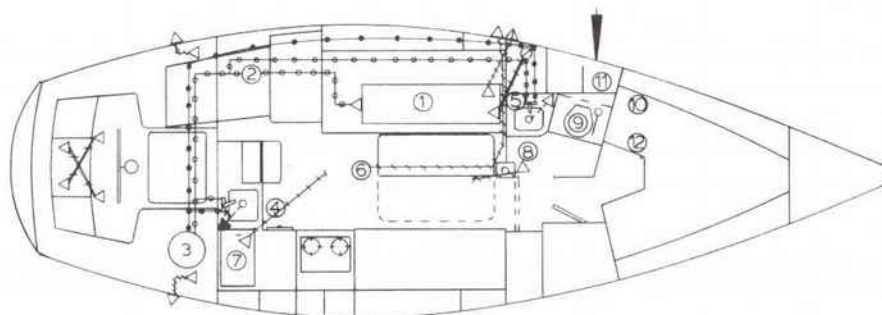
E (Mainsail foot)	10'9"	3.28 m.
J (Foretriangle base)	12'10"	3.91 m.
P (Mainsail luff)	37'0"	11.28 m.
I (Foretriangle ht.)	42'0"	17.80 m.
L.O.A.	29'11 1/2"	9.09 m.
L.W.L.	25'9"	7.83 m.
Beam	10'1 1/2"	3.04 m.
Sail area	473.1 sq. ft.	43.95 sq. m.
Displacement	9,700 lbs.	4,399.9 kg.
Ballast	Shoal 4,000 lbs.	1,816.00 kg.
	Deep 4,000 lbs.	1,816.00 kg.
Draft	Shaft 4'0"	1.20 m.
	Deep 5'3"	1.50 m.
	40'6"	12.34 m.
Mast height from waterline	47'0"	14.33 m.
Headroom	6'4"	1.90 m.

Hunter 30

PLUMBING DIAGRAM



HEAD DETAIL
 ••• 3/4" BLK. HOSE



LEGEND:

- ① WATER TANK
- ② WATER PUMP
- ③ WATER HEATER
- ④ GALLEY
- ⑤ VANITY
- ⑥ BILGE PUMP (ELEC.)
- ⑦ ICEBOX
- ⑧ SHOWER
- ⑨ HEAD
- ⑩ HOLDING BAG
- ⑪ 1-1/2" VENTED LOOP (BRONZE)
- ⑫ WASTE PUMP (MANUAL)

HOSES & FITTINGS:

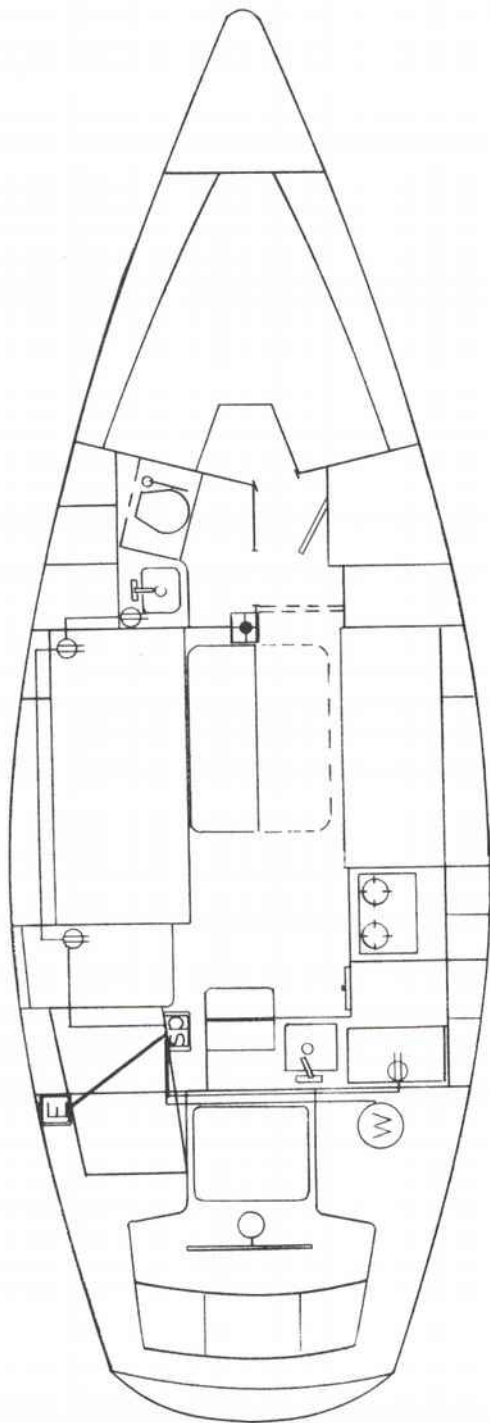
- 5/8" WH. HOSE (COLD WATER)
- 5/8" WH. HOSE (HOT WATER)
- ~ 3/4" SHIELDVAC (W/CUFFS)
- ~ 1-1/2" SHIELDVAC (W/CUFFS)
- 1-1/4" SHIELDFLEX (GREEN)
- 1-1/2" SHIELDFLEX (GREEN)
- △ THRU HULL (PLASTIC)
- ▲ THRU HULL (BRONZE)
- DECK PLATE (WATER)
- ⊗ DECK PLATE (WASTE)
- ⊗ SALT WATER PICKUP
- △ WATER & WASTE VENTS
- 7 GATE VALVE

SUBSYSTEMS:

- FRESH WATER
- WASTE DISPOSAL
- DRAINS

Hunter 30

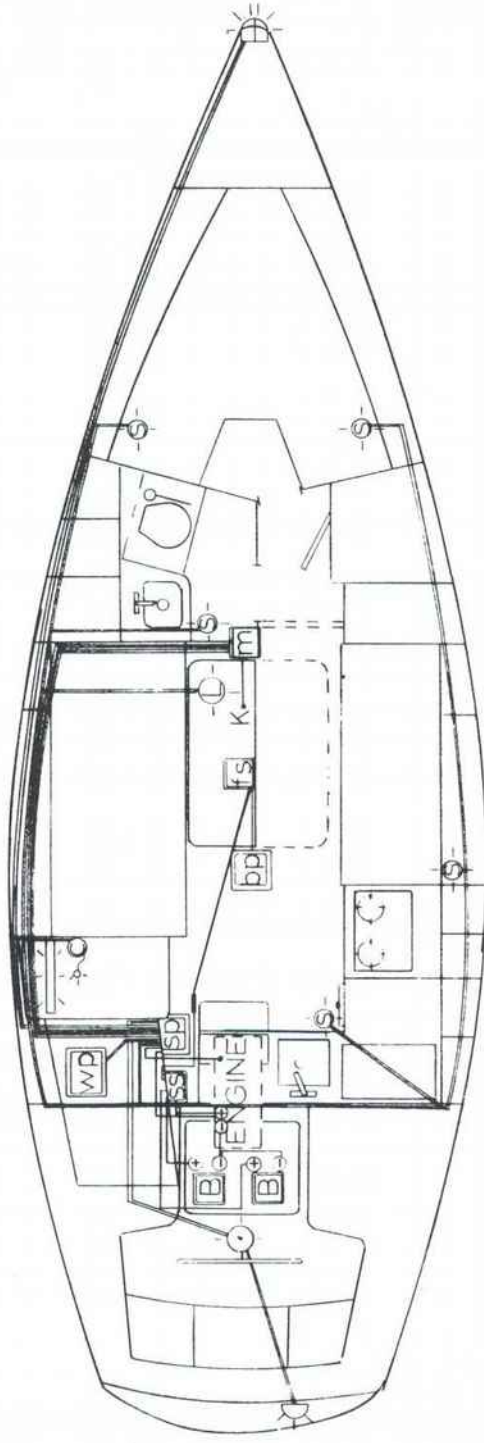
WIRING DIAGRAM (AC)



LEGEND:	
	ELECTRICAL DECK PLATE
	SWITCH PANEL
	WATER HEATER
	110V OUTLET
	10/3 MARINE POWER CABLE (AC SUPPLY)
	14/3 MARINE POWER CABLE (TO OUTLETS/WATER HEATER)

Hunter 30

WIRING DIAGRAM (DC)



TO FLOAT SWITCH

DC SUPPLY TO SWITCH PANEL

LEGEND:

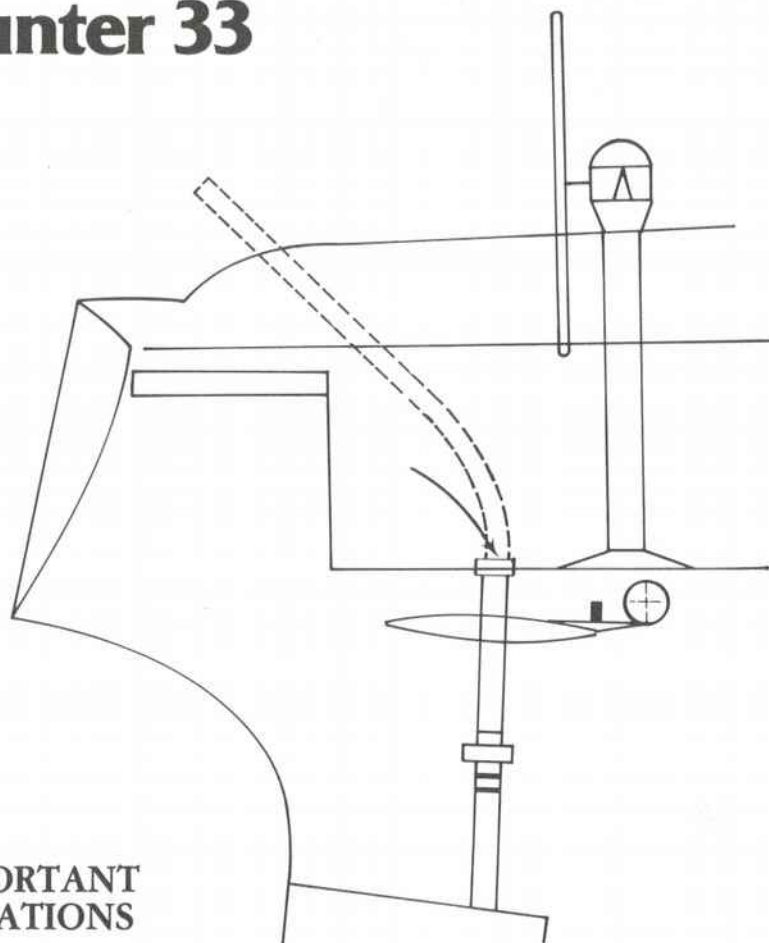
- B BATTERY (2-72 A.)
- S SWITCH PANEL
- W WATER PUMP
- BP BILGE PUMP (750 GPH)
- F FLOAT SWITCH
- M MAST
- K KEEL

- SM ROUND LIGHT
- LG ROUND LIGHT
- LG FLUOR. LIGHT
- SM FLUOR. LIGHT
- CHART LIGHT
- IN-LINE FUSE
- FLUOR. LIGHT AT CHART TABLE IS RED.

WIRING NOTES:

- | COLOR | GAUGE | APPLICATION |
|-------|-------|-------------------------------|
| RED | 4 | BATTERY CABLE/SAFETY MAIN SW. |
| WHITE | 8 | MAST GROUND |
| RED | 10 | DC SUPPLY TO SWITCH PANEL |
| RED | 12 | WATER PUMP |
| BLUE | 16 | CABIN LIGHTS |
| WHITE | 16 | RUNNING LIGHTS (BOW) |
| " | " | " (STERN/COMPASS) |
| GREEN | 16 | STEERING LIGHTS |
| RED | 16 | ANCHOR LIGHT |
| BROWN | 16 | BILGE PUMP |
| TAN | 16 | BILGE FLOAT SWITCH |
- ALL LEADS EXCEPT FLOAT SWITCH AND MAST GRD ARE RUN WITH BLACK GROUND OF EQUAL GAUGE. THESE ARE CONNECTED TO A COMMON GROUND AT THE SWITCH PANEL WHICH IS GROUNDED TO THE ENGINE WITH A 10 GAUGE BLACK WIRE.

Hunter 33



IMPORTANT LOCATIONS

EMERGENCY TILLER INSTALLATION: unscrew the protective cover plate on the cockpit sole, just aft of the steering pedestal. Insert the emergency tiller pointing aft onto the exposed rudder shaft.

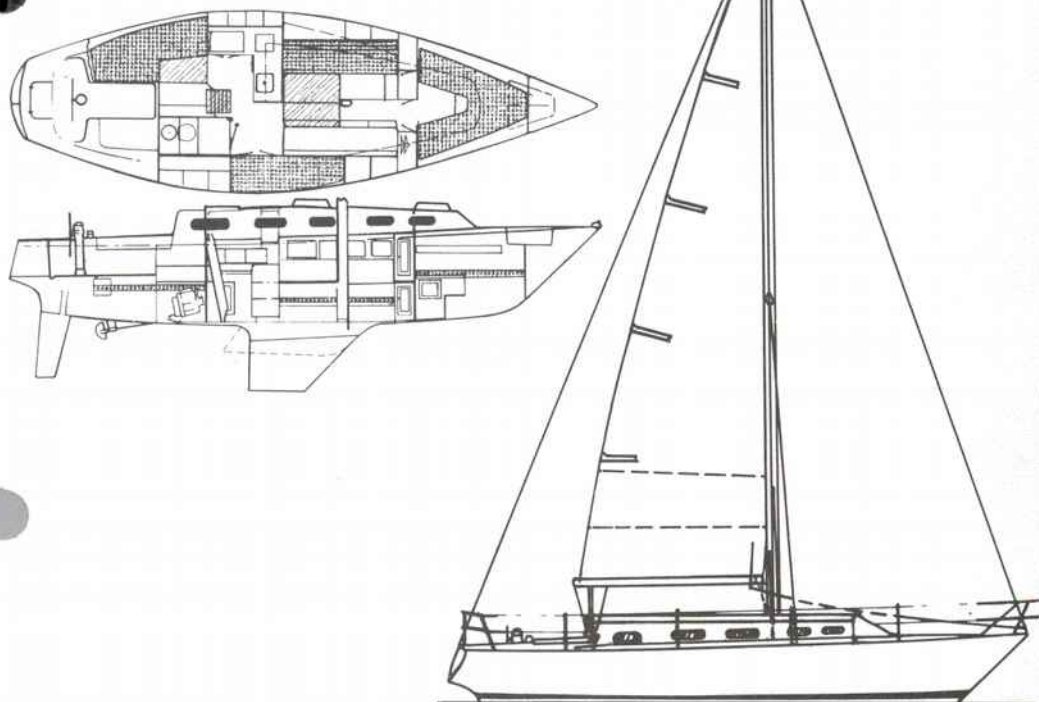
DIESEL FILLER: center of the cockpit sole.

WATER FILLER: inside anchor well.

WASTE PUMP OUT: starboard side deck, forward.

DOCKSIDE POWER OUTLET: starboard cockpit coaming (next to engine panel).

Hunter 33

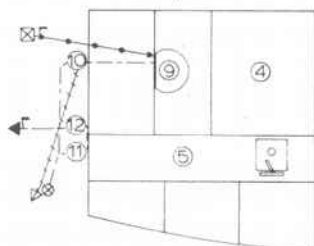
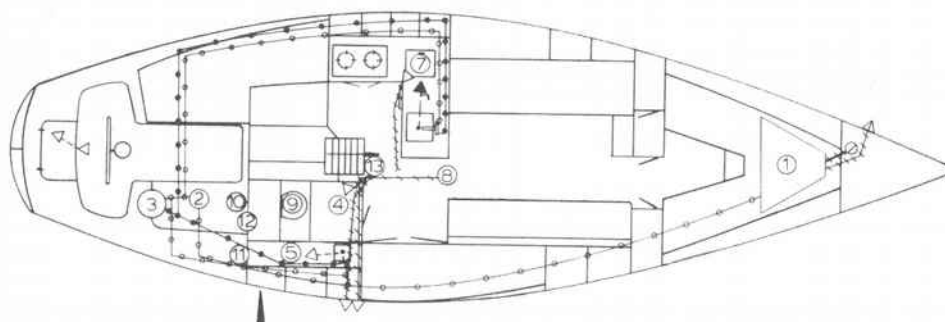


SPECIFICATIONS:

E (Mainsail foot)	10'9"	3.82 m.
J (Foretriangle base)	14'0"	4.40 m.
P (Mainsail luff)	37'1"	11.23 m.
I (Foretriangle ht.)	42'6"	12.95 m.
L.O.A.	32'8"	9.90 m.
L.W.L.	27'1"	8.23 m.
Beam	10'1 1/2"	41.10 m.
Sail area	496.7 sq. ft.	46.97 sq. m.
Displacement	10,600 lbs.	4,808.16 kg.
Ballast	Shoal 4,300 lbs.	1,952.20 kg.
	Deep 4,100 lbs.	1,862.40 kg.
Draft	Shoal 4'0"	1.20 m.
	Deep 5'3"	1.576 m.
Mast height	41'0"	12.50 m.
from waterline	47'3"	13.78 m.
Headroom	6'4"	1.90 m.

Hunter 33

PLUMBING DIAGRAM



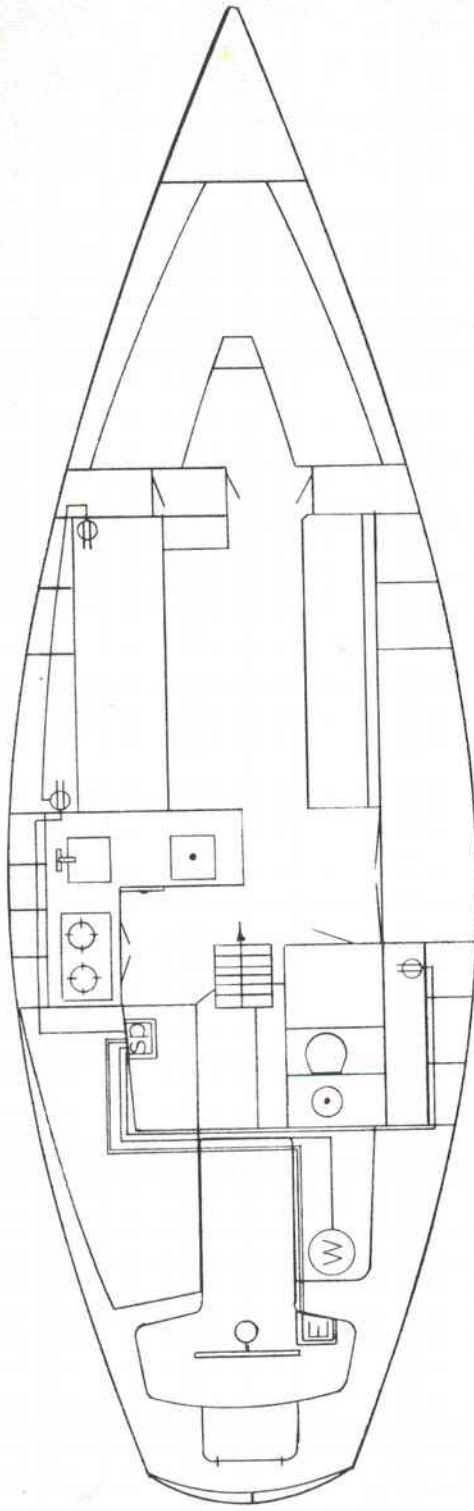
HEAD DETAIL
 3/4" BLK. HOSE







SUBSYSTEMS:
 FRESH WATER
 WASTE DISPOSAL
 DRAINS

LEGEND:	HOSES & FITTINGS:
① WATER TANK	5/8" WH. HOSE (COLD WATER)
② WATER PUMP	5/8" WH. HOSE (HOT WATER)
③ WATER HEATER	3/4" SHIELDVAC (W/CUFFS)
④ SHOWER	1-1/2" SHIELDVAC (W/CUFFS)
⑤ VANITY	1-1/4" SHIELDFLEX (GREEN)
⑥ GALLEY	1-1/2" SHIELDFLEX (GREEN)
⑦ ICEBOX	△ THRU HULL (PLASTIC)
⑧ BILGE PUMP (ELEC.)	▲ THRU HULL (BRONZE)
⑨ HEAD	○ DECK PLATE (WATER)
⑩ HOLDING BAG	⊗ DECK PLATE (WASTE)
⑪ WASTE PUMP (MANUAL)	⊠ SALT WATER PICKUP
⑫ 1-1/2" VENTED LOOP (BRONZE)	△ WATER & WASTE VENTS
⑬ BILGE PUMP/SHOWER	7 GATE VALVE

Hunter 33

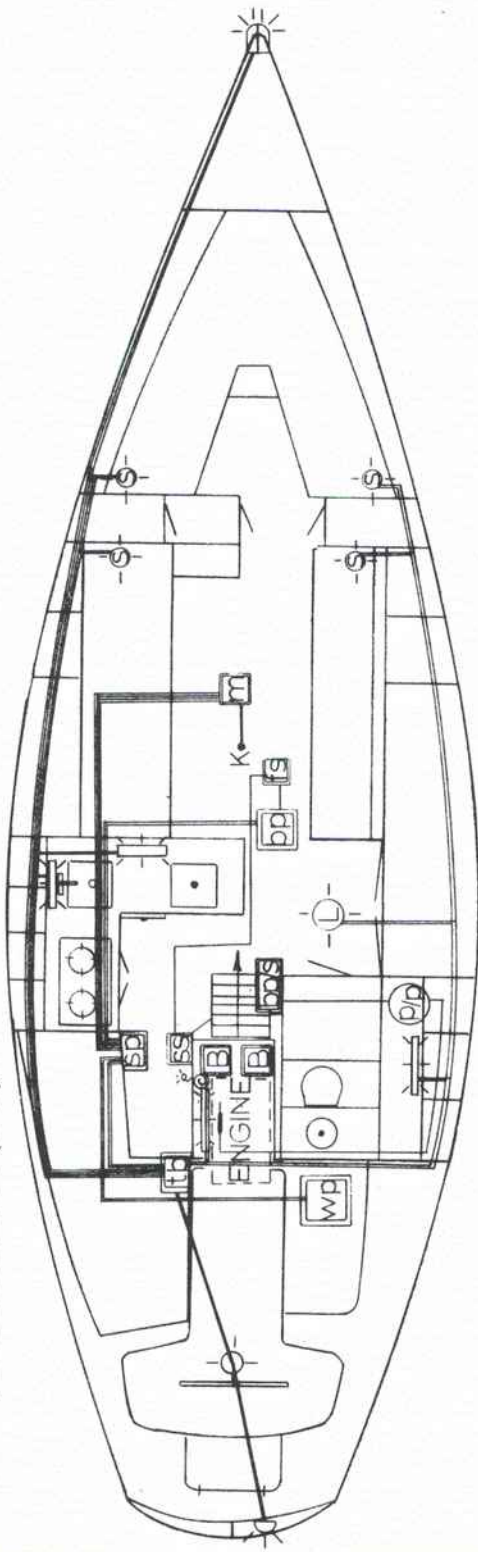
WIRING DIAGRAM (AC)



LEGEND:	
	ELECTRICAL DECK PLATE
	SWITCH PANEL
	WATER HEATER
	110v OUTLET
	10/3 MARINE POWER CABLE (AC SUPPLY)
	14/3 MARINE POWER CABLE (TO OUTLETS/WATER HEATER)

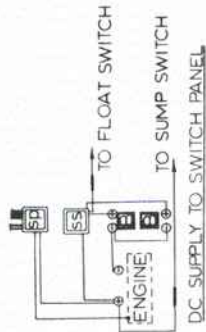
Hunter 33

WIRING DIAGRAM (DC)



LEGEND:

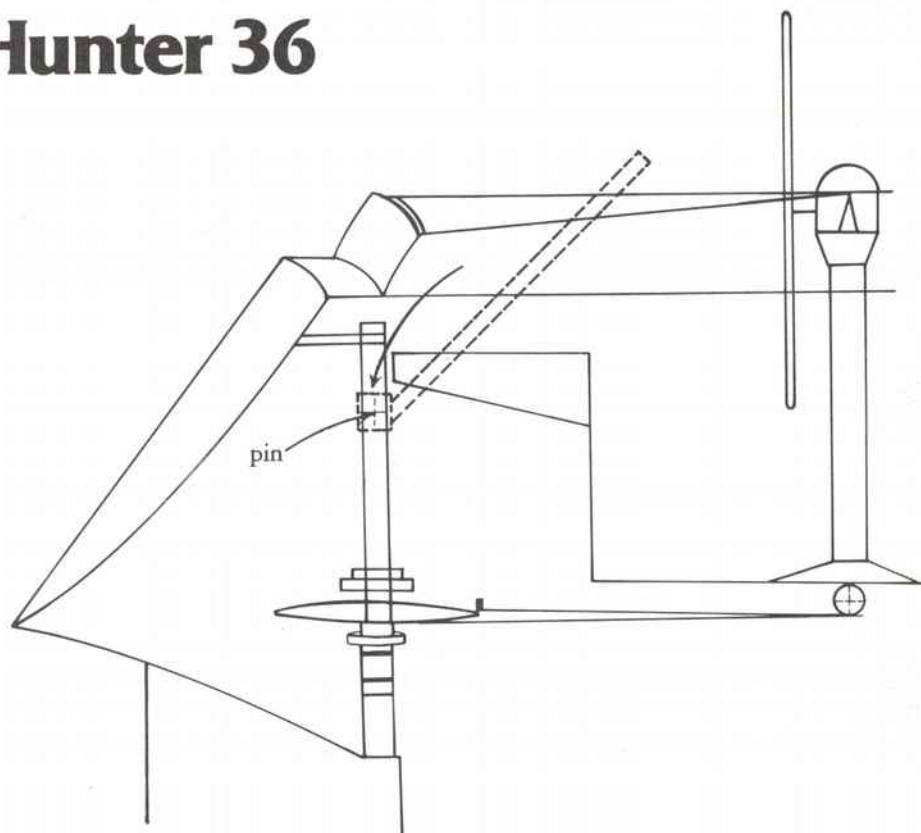
	BATTERY (2-72 A)		SM. ROUND LIGHT
	SWITCH PANEL		LG. ROUND LIGHT
	SAFETY MAIN SWITCH		LG. FLOOR LIGHT
	WATER PUMP		SM. FLOOR LIGHT
	BILGE PUMP		CHART LIGHT
	BILGE FLOAT SWITCH		IN-LINE FUSE
	MAST		KEEL
	BILGE PUMP/SHOWER		FLUOR. LIGHT AT CHART TABLE IS RED.
	PUSH/PULL SWITCH		
	TERMINAL BLOCK		



WIRING NOTES:

COLOR	GAUGE	APPLICATION
RED	4	BATTERY CABLE/SAFETY MAIN SW.
WHITE	8	MAST GROUND
RED	10	DC SUPPLY TO SWITCH PANEL
RED	12	WATER PUMP
BLUE	16	CABIN LIGHTS
WHITE	16	RUNNING LIGHTS (BOW)
GREEN	16	STEERING LIGHTS (STERN/COMPASS)
RED	16	ANCHOR LIGHT
BROWN	16	BILGE PUMP
TAN	16	BILGE FLOAT SWITCH
● ALL LEADS (EXCEPT FLOAT SWITCH AND MAST GROUND) ARE RUN WITH A BLACK GROUND OF EQUAL GAUGE. THESE ARE CONNECTED TO A COMMON GROUND AT THE SWITCH PANEL WHICH IS GROUND TO THE ENGINE WITH A TO GAUGE BLACK WIRE.		

Hunter 36



IMPORTANT LOCATIONS

EMERGENCY TILLER INSTALLATION: lift lazarette seat, remove pin in rudder shaft, fit emergency tiller brackets over rudder shaft, re-insert pin.

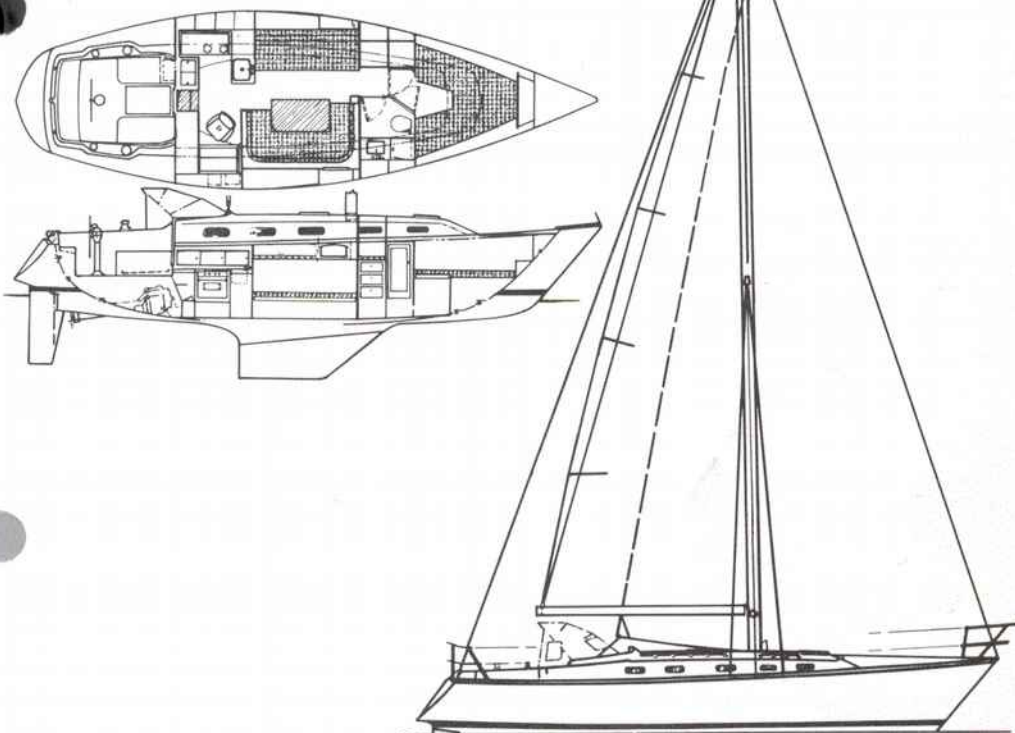
DIESEL FILLER: under lazarette seat.

WATER FILLER: port side deck.

WASTE PUMP OUT: starboard side deck forward.

DOCKSIDE POWER OUTLET: outside port cockpit coaming.

Hunter 36

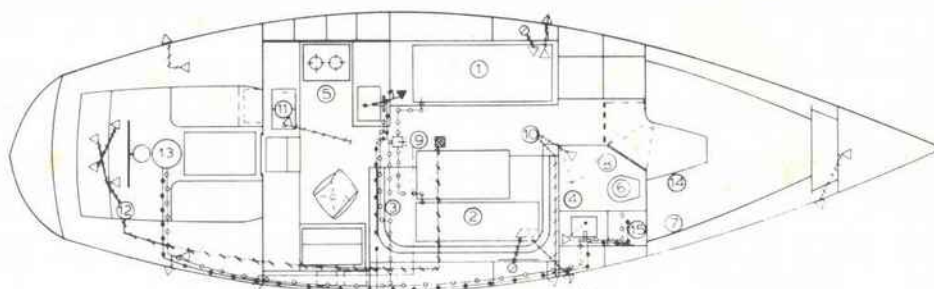


SPECIFICATIONS:

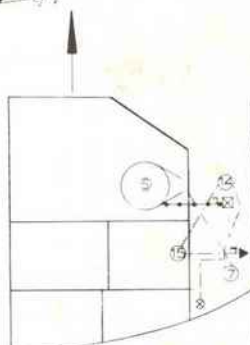
E (Mainsail foot)	12'9"	3.68 m.
J (Foretriangle base)	14'9"	4.29 m.
P (Mainsail luff)	41'0"	12.40 m.
I (Foretriangle ht.)	46'6"	14.03 m.
L.O.A.	35'11"	10.80 m.
L.W.L.	29'6"	9.00 m.
Beam	11'1"	3.40 m.
Sail area	621 sq. ft.	57.69 sq. m.
Displacement	13,500 lbs.	6,125.20 kg.
Ballast	6,000 lbs.	2,724.00 kg.
Draft	4'11"	1.40 m.
Mast height	45'6"	13.87 m.
from waterline	50'6"	15.39 m.
Headroom	6'5"	1.96 m.

Hunter 36

PLUMBING DIAGRAM



SUBSYSTEMS
FRESH WATER
WASTE DISPOSAL
DRAINS

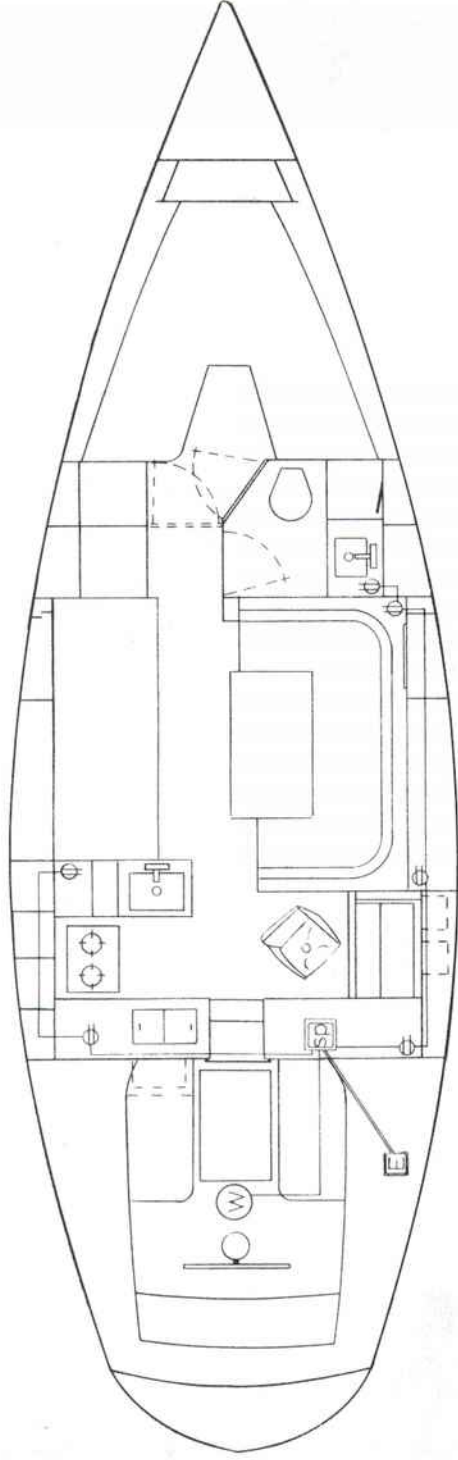


HEAD DETAIL
-- 3/4" BLK HOSE

LEGEND	HOSES & FITTINGS
① WATER TANK (PORT)	--- 5/8" WHITE HOSE (COLD WATER)
② WATER TANK (STBD)	--- 5/8" WHITE HOSE (HOT WATER)
③ WATER PUMP	--- 3/4" SHIELDVAC (W/CUFFS)
④ VANITY	--- 1-1/2" SHIELDVAC (W/CUFFS)
⑤ GALLEY	--- 1-1/4" SHIELDFLEX (GREEN)
⑥ HEAD	--- 1-1/2" SHIELDFLEX (GREEN)
⑦ HOLDING BAG	△ THRU HULL (PLASTIC)
⑧ SHOWER	▲ THRU HULL (BRONZE)
⑨ BILGE PUMP (ELEC.)	○ DECK PLATE (WATER)
⑩ SUMP PUMP/SHOWER	⊗ DECK PLATE (WASTE)
⑪ ICEBOX	⊗ SALT WATER PICKUP
⑫ BILGE PUMP (MANUAL)	⊗ NAVY STRAINER
⑬ WATER HEATER	△ WATER & WASTE VENTS
⑭ WASTE PUMP (MANUAL)	⌋ GATE VALVE
⑮ 1-1/2" VENTED LOOP (BRZ)	⊞ 3-WAY VALVE

Hunter 36

WIRING DIAGRAM (AC)

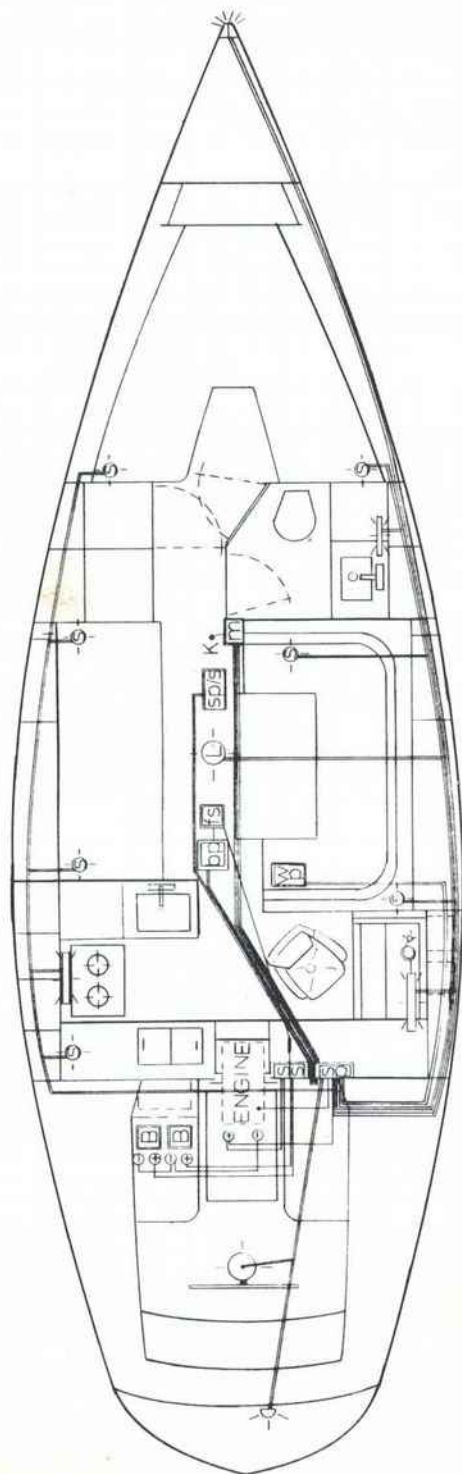


LEGEND:

	ELECTRICAL DECK PLATE
	SWITCH PANEL
	WATER HEATER
	110V OUTLET
	10/3 MARINE POWER CABLE (AC SUPPLY)
	14/3 MARINE POWER CABLE (TO OUTLETS/WATER HEATER)

Hunter 36

WIRING DIAGRAM (DC)



LEGEND

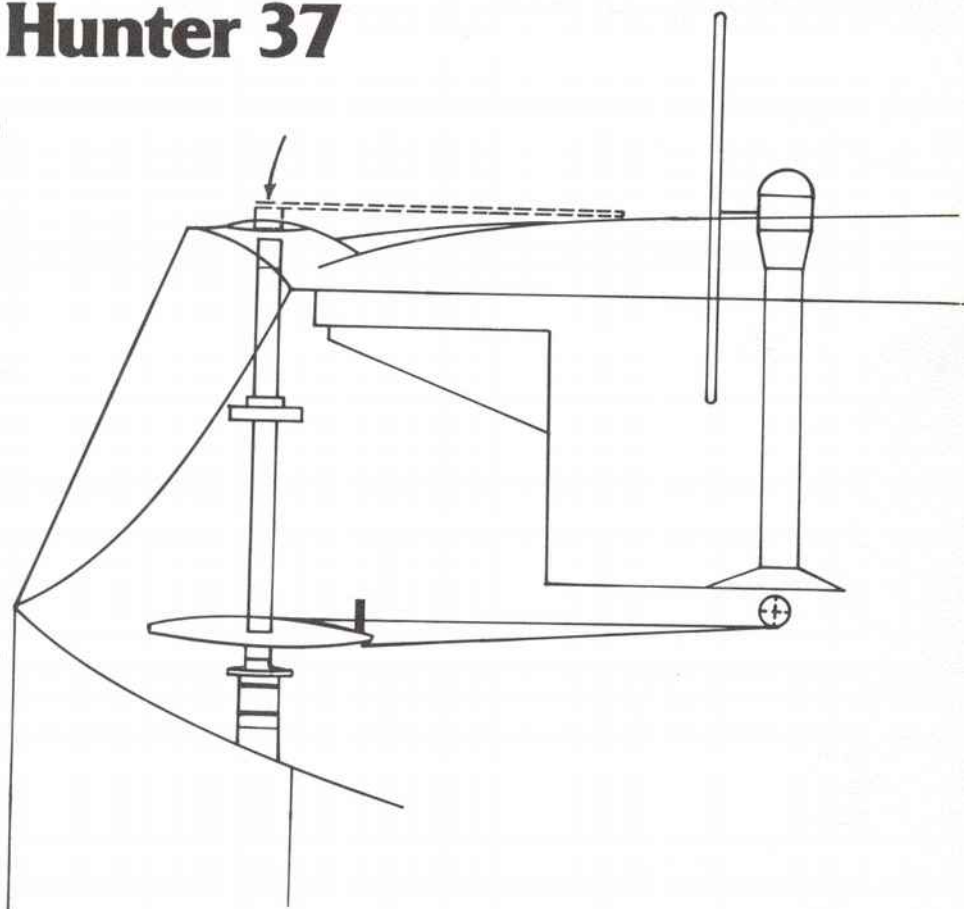
B	BATTERY (2-85A)	SM	ROUND LIGHT
SP	SWITCH PANEL	LG	FLOOR LIGHT
SS	SAFETY MAIN SWITCH	SM	FLOOR LIGHT
WP	WATER PUMP	CH	CHART LIGHT
BP	BILGE PUMP (1500 GPH)	IF	IN-LINE FUSE
BS	BILGE FLOAT SWITCH	FL	FLUOR LIGHT AT CHART TABLE (IS RED)
SPS	SLUMP PUMP/SHOWER		
M	MAST		

ELECTRICAL DIAGRAM (DC)
HUNTER 36
NO SCALE

WIRING NOTES

COLOR	GAUGE	APPLICATION
RED	4	BATTERY CABLE/SAFETY MAIN SW
WHITE	8	MAST GROUND
RED	10	DC SUPPLY TO SWITCH PANEL
RED	12	WATER PUMP
BLUE	16	CABIN LIGHTS
WHITE	16	RUNNING LIGHTS (BOW)
GREEN	16	STEERING LIGHTS (STERN/COMPASS)
RED	16	ANCHOR LIGHT
BROWN	16	BILGE PUMP
BROWN	16	BILGE FLOAT SWITCH
YELLOW	16	SLUMP PUMP/SHOWER
● ALL LEADS (EXCEPT FLOAT SWITCH AND MAST GROUND) ARE RUN WITH A BLACK GROUND OF EQUAL GAUGE. THESE ARE CONNECTED TO A COMMON GROUND AT THE SWITCH PANEL, WHICH IS GROUNDED TO THE ENGINE WITH A 10 GAUGE BLACK WIRE.		

Hunter 37



IMPORTANT LOCATIONS

EMERGENCY TILLER INSTALLATION: unscrew protective cover plate on stern cockpit coaming, insert the emergency tiller onto the exposed rudder shaft.

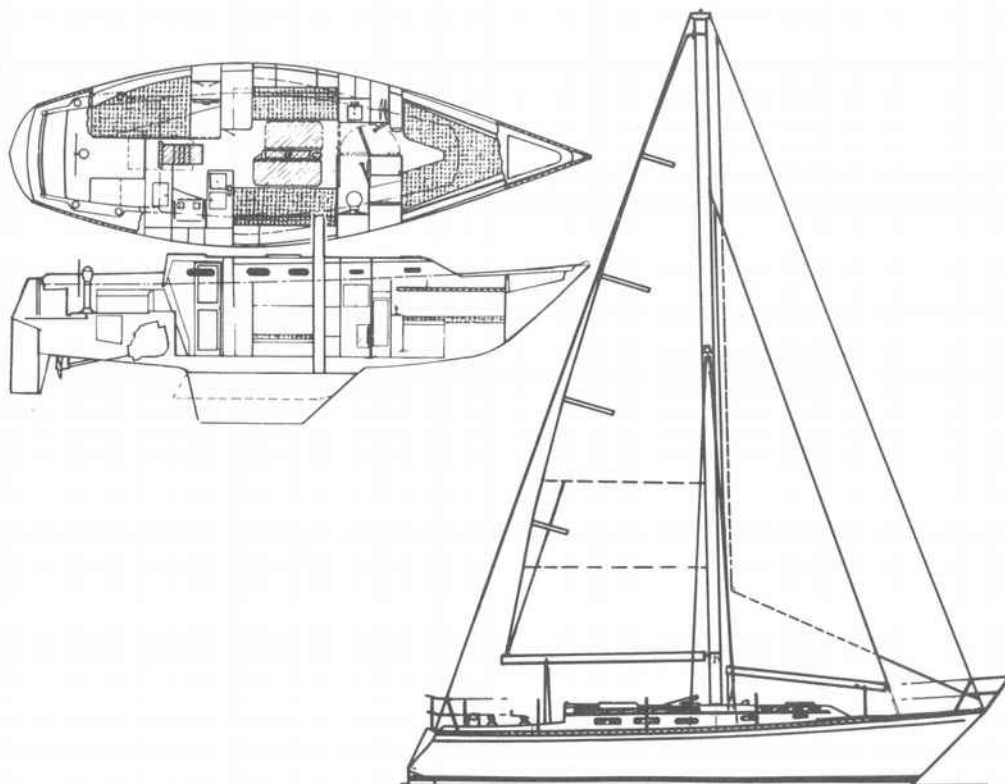
DIESEL FILLER: under starboard cockpit seat, aft.

WATER FILLER: starboard and port side decks, amidships.

WASTE PUMP OUT: starboard side deck forward.

DOCKSIDE POWER OUTLET: starboard cockpit coaming.

Hunter 37

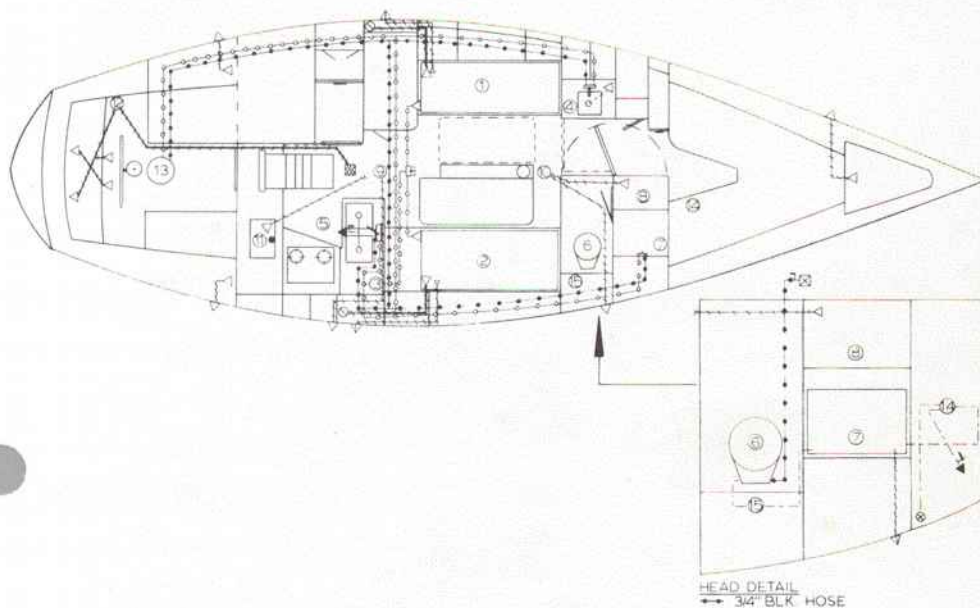


SPECIFICATIONS:

E (Mainsail foot)	13'0"	3.90 m.
J (Foretriangle base)	17'0"	5.10 m.
P (Mainsail luff)	39'6"	11.96 m.
I (Foretriangle ht.)	46'2"	14.05 m.
L.O.A.	37'0"	11.30 m.
L.W.L.	30'0"	9.10 m.
Beam	11'10½"	3.40 m.
Sail area	710 sq. ft.	65.96 sq. m.
Displacement	17,800 lbs.	8,074.08 kg.
Ballast	Shoal 7,150 lbs.	3,246.00 kg.
	Deep 6,850 lbs.	3,110.00 kg.
Draft	Shoal 4'0"	1.20 m.
	Deep 5'1"	1.55 m.
Mast height	44'11"	13.69 m.
from waterline	50'0"	15.24 m.
Headroom	6'4"	1.93 m.

Hunter 37

PLUMBING DIAGRAM

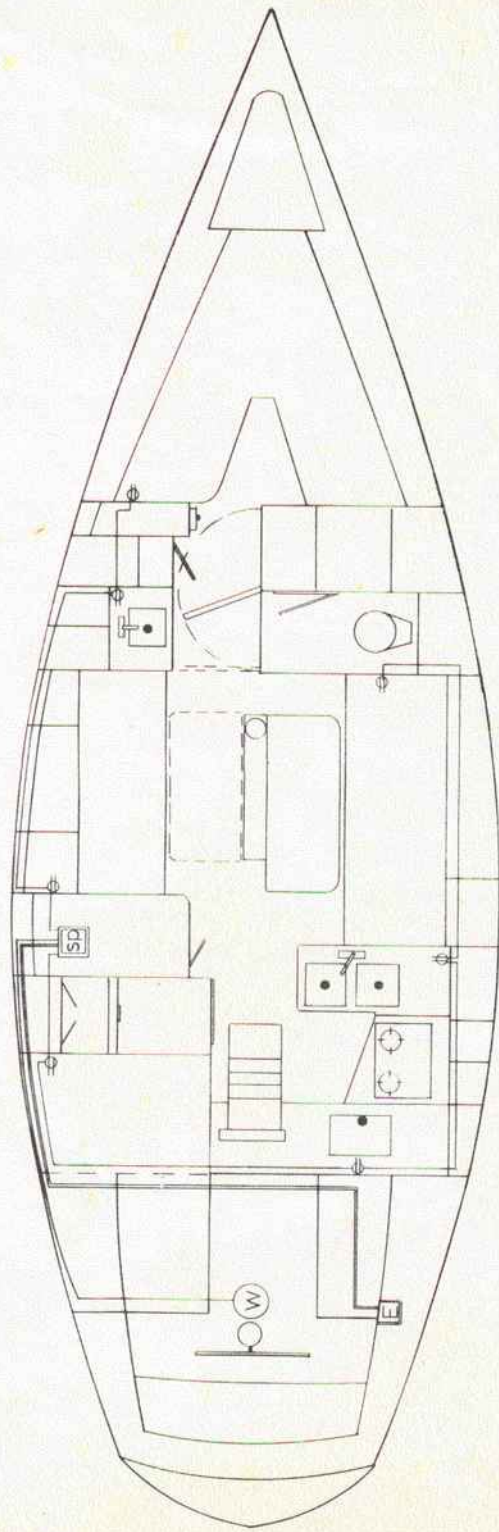


LEGEND	HOSES & FITTINGS
① WATER TANK (PORT)	--- 5/8" WH. HOSE (COLD WATER)
② WATER TANK (STBD)	--- 5/8" WH. HOSE (HOT WATER)
③ WATER PUMP	--- 3/4" SHIELDVAC (W/CUFFS)
④ VANITY	--- 1-1/2" SHIELDVAC (W/CUFFS)
⑤ GALLEY	--- 1-1/4" SHIELDFLEX (GREEN)
⑥ HEAD	--- 1-1/2" SHIELDFLEX (GREEN)
⑦ HOLDING TANK	△ THRU HULL (PLASTIC)
⑧ SHOWER	▲ THRU HULL (BRONZE)
⑨ BILGE PUMP (ELEC.)	○ DECK PLATE (WATER)
⑩ SUMP PUMP/SHOWER (ELEC.)	○ DECK PLATE (WASTE)
⑪ ICEBOX	⊠ SALT WATER PICKUP
⑫ BILGE PUMP (MANUAL)	⊠ NAVY STRAINER
⑬ WATER HEATER	△ WATER & WASTE VENTS
⑭ WASTE PUMP (MANUAL)	↑ GATE VALVE
⑮ 1-1/2" VENTED LOOP (BRZ)	⊠ 3-WAY VALVE

SUBSYSTEMS:
 FRESH WATER
 WASTE DISPOSAL
 DRAINS

Hunter 37

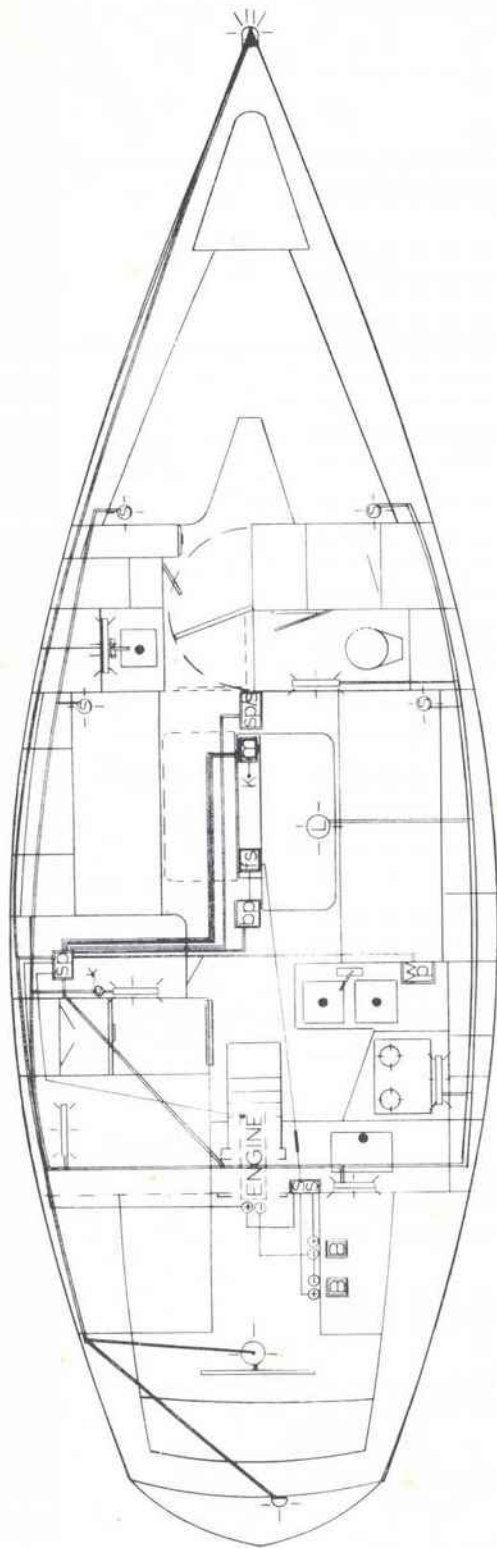
WIRING DIAGRAM (AC)



LEGEND	
	ELECTRICAL DECK PLATE
	SWITCH PANEL
	WATER HEATER
	110V OUTLETS
	10/3 MARINE POWER CABLE (AC SUPPLY)
	14/3 MARINE POWER CABLE (TO OUTLETS/WATER HEATER)

Hunter 37

WIRING DIAGRAM(DC)



LEGEND:	
B	BATTERY (2-85 A.)
S	SM. ROUND LIGHT
LG	LG. ROUND LIGHT
SW	SWITCH PANEL
MS	SAFETY MAIN SWITCH
W	WATER PUMP
B	BILGE PUMP (1500 GPH)
F	BILGE FLOAT SWITCH
P	SUMP PUMP/SHOWER (750 GPH)
M	MAST
CH	CHART LIGHT
IN	IN-LINE FUSE
FL	FLOOR LIGHT AT CHART TABLE (S RED)

WIRING NOTES:	
COLOR	GAUGE
RED	4
WHITE	8
RED	10
RED	12
BLUE	16
WHITE	16
GREEN	16
RED	16
BROWN	16
TAN	16
YELLOW	16
● LEADS EXCEPT FLOOR SWITCH AND MAST GROUND) ARE RUN WITH A BLACK GROUND OF EQUAL GAUGE. THESE ARE CONNECTED TO A COMMON GROUND AT THE SWITCH PANEL WHICH IS GROUNDED TO THE ENGINE WITH A 10 GAUGE BLACK WIRE.	

APPLICATION	
BATTERY CABLE/SAFETY MAIN SWITCH	
MAST GROUND	
DC SUPPLY TO SWITCH PANEL	
WATER PUMP	
CABIN LIGHTS	
COCKPIT LIGHTS (BOW)	
STEERING LIGHTS (STERN/COMPASS)	
ANCHOR LIGHT	
BILGE PUMP	
BILGE FLOAT SWITCH	
SUMP PUMP/SHOWER	
FLOOR SWITCH	
MAST GROUND	

Scanned by: Jim Boernge
S/V Short Circuit

For the good of all Hunter Sailors

Document found on my 1981 Hunter 36
circa 1981

Scanned as found