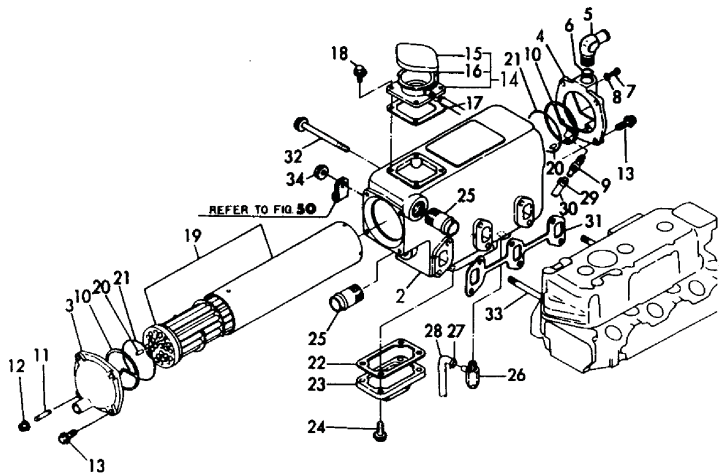


Fig.35. COOLING FRESH WATER COOLER

Fig.35 清水クーラ
COOLING FRESH WATER COOLER



(A)=3GM30
(B)=3GM30VE
(C)=3GM30B
(D)=3GM30C
(E)=3GM30F
(F)=3GM30FVE

REF.	LEV.	PARTS NO.	DESCRIPTION	Q'TY						I	R
				(A)	(B)	(C)	(D)	(E)	(F)		
1	1	728390-44500	EXCHANGER ASSY, HEAT					1			
I 1-1	1	128390-44900	EXCHANGER ASSY, HEAT					1	1	N	
(E=E11046)											
2	2	128390-44010	TANK, HEAT EXCHANGER					1	1		
3	2	128695-44050	COVER, SIDE					1	1		
4	2	128690-44060	COVER, OUTLET					1	1		
5	2	128690-49310	ELBOW					1	1		
6	2	24311-000160	O-RING 1A P-16.0					1	1		
7	2	26554-050102	SCREW M 5X 10					1	1		
8	2	23414-050000	GASKET 5					1	1		
9	2	128695-44090	COCK PT1/8					1	1		
10	2	128695-44070	GASKET					2	2		
11	2	26216-060182	STUD M 6X 18 PLATED					1	1		
12	2	26366-060002	NUT M 6					1	1		
13	2	26106-060182	BOLT M 6X 18 PLATED					7	7		
14	2	123682-44190	FILLER W/BALL					1	1		
15	3	123682-44210	CAP					1	1		
16	3	123682-44220	CHAIN					1	1		
17	2	123682-44200	GASKET					1			
I 17-1	2	123682-44201	GASKET, (NON-ASB.)					1	1	N	
(E=E11515)											
18	2	26106-060142	BOLT M 6X 14 PLATED					4	4		
19	2	128390-44401	CORE ASSY, COOLER					1	1		
20	2	124790-44470	PIN					2	2		
21	2	24311-000700	O-RING 1A P-70.0					2	2		
22	2	128390-44490	GASKET					1			
I 22-1	2	128390-44491	GASKET, (NON-ASB.)					1	1	N	
(E=E11515)											
23	2	128390-44480	COVER, TANK					1	1		
24	2	26106-080202	BOLT M 8X 20 PLATED					4	4		
25	2	124160-49480	JOINT, PIPE					2	2		
26	2	120130-49350	COCK 1/4					1	1		
27	1	124460-77680	RETAINER					1	1		
28	1	23061-070300	PIPE 7X 300					1	1		
29	1	124722-59050	CLAMP 9					1			
I 29-1	1	124460-77680	RETAINER					1	1	N	
(E=E13317)											
30	1	23061-070300	PIPE 7X 300					1	1		
31	1	121450-13250	GASKET, EXH.MANIFOLD					1			
I 31-1	1	121450-13251	GASKET, (NON-ASB.)					1	1	N	
(E=E11515)											
32	1	26106-080902	BOLT M 8X 90 PLATED					4	4		
33	1	26216-080902	STUD M 8X 90 PLATED					2	2		
34	1	26366-080002	NUT M 8					2	2		