

## Spare Parts List - Boom

# Contents

Table of booms	2
General information	2
Spare parts inboard and outboard ends	4-5
86/59 & 120/62	6-7
143/76 & 171/94	8-9
200/117 & 250/140	10-11
Out hauls	10-11
Conventional out haul	10-11
FURLIN' out haul	10-11
Cars	10-11
Sliders	12-13
Main sheet sliders	12-13
Kicker sliders	14-15
Singel line reef	14-15

## Inboard boom end

		Boom dimension: 86/59						120/62					
Item	Description	Dimension	Qty	Part no.	Pos.	Dimension	Qty	Part no.	Pos.	Item	Description	Dimension	Qty
1	Inboard boom end fitting	85/58, 86/59	1	509-013	—	120/62	1	509-025	—	2	Clevis pin	Ø8x36	1
2	Clevis pin	Ø8x36	1	165-107	—	Ø10x50	1	165-206	—	4	Split pin	—	1
4	Split pin	—	—	—	—	Ø2,9x16	1	301-049	—	4	Split ring	Ø20x15	1
4	Split ring	Ø20x15	1	301-015	—	—	—	—	—	—	Pin	—	—
—	Pin	Ø4x40	(13)	166-083	—	—	—	—	—	—	Split pin	Ø2x10	2
—	Split pin	Ø2x10	2	301-046	—	—	—	—	—	—	Pin	—	—
5	Pin	—	—	—	—	—	—	—	—	5	Pin	—	—
5	Clevis pin	Ø8x63	1	165-118	—	—	—	—	—	6	Washer	Ø17/8-2	(11)
6	Washer	Ø17/8-2	(11)	164-002	—	Ø20/10-0,8	(21)	164-028	—	7	Circular clip	—	—
7	Circular clip	—	—	—	—	Ø12/9	2	301-073	—	7	Split pin	Ø2,5x12	1
7	Split pin	Ø2,5x12	1	301-047	—	—	—	—	—	8	Separator	—	—
8	Separator	—	—	—	—	—	—	—	—	9	Sheave	Ø45/8-13	2
9	Sheave	Ø45/8-13	2	504-320	—	Ø45/10-11	4	504-504	0,1,2,F	10	Sheave (spacer)	Ø70/12-16	1
10	Sheave (spacer)	Ø70/12-16	1	504-332	—	—	—	—	—	11	Pin	Ø10x66	1
11	Pin	Ø10x66	1	166-084	—	Ø10x72	1	166-326	—	12	Washer	Ø20/10-0,8	(11)
12	Washer	Ø20/10-0,8	(11)	164-028	—	Ø20x10-0,8	(21)	164-028	—	13	Circular clip	—	—
13	Circular clip	—	—	—	—	Ø12/9	2	301-073	—	13	Pin	Ø3x18	1
13	Pin	Ø3x18	1	166-046	—	—	—	—	—	13	Split pin	Ø2,5x12	1
13	Split pin	Ø2,5x12	1	301-047	—	—	—	—	—	14	Jam lever	13x105	2
14	Jam lever	13x105	2	511-062-01	—	11x120	4	511-074	0,1,2,F	15	Flange bushing	—	—
15	Flange bushing	—	—	—	—	Ø12/10-5,5	8	306-327	—	16	Spring	—	—
16	Spring	—	—	—	—	Ø1,8/Dy15/L8/N4,13	4	308-062	—	17	Plug - White	—	—
17	Plug - White	—	—	—	—	Ø8	1	319-529	—	17	Plug - Blue	—	—
17	Plug - Blue	—	—	—	—	Ø8	1	319-530	—	17	Plug - Red	—	—
17	Plug - Red	—	—	—	—	Ø8	1	319-531	—	17	Plug - Yellow	—	—
17	Plug - Yellow	—	—	—	—	Ø8	1	319-532	—	17	Plug - Green	—	—
17	Plug - Green	—	—	—	—	Ø8	1	319-533	—	17	Plug - Black	—	—
17	Plug - Black	—	—	—	—	Ø8	1	319-534	—	21	Pin	—	—
21	Pin	—	—	—	—	Ø10x66	1	166-325	—	22	Washer	—	—
22	Washer	—	—	—	—	Ø20/10-0,8	(21)	164-028	—	23	Circular clip	—	—
23	Circular clip	—	—	—	—	Ø12/9	2	301-073	—	24	Sheave	—	—
24	Sheave	—	—	—	—	Ø38/10-11	2	504-505	2)	25	Clevis pin	—	—
25	Clevis pin	—	—	—	—	Ø8x27	1	165-113	—	27	Split pin	—	—
27	Split pin	—	—	—	—	Ø2,5x12	1	301-047	—	28	Sheave	—	—
28	Sheave	—	—	—	—	Ø28x8-13	1	504-319	—	32	Poprivet LD 850	—	—
32	Poprivet LD 850	—	—	—	—	Ø6,4x12,7	4	167-004	—	32	Poprivet LD 650	Ø4,8x12,7	4
32	Poprivet LD 650	Ø4,8x12,7	4	167-018	—	—	—	—	—	33	Plug	Ø12/4,5-11	2
33	Plug	Ø12/4,5-11	2	319-595	—	Ø14/8-12	2	319-596	—	34	Plug	Ø14/8-12	2
34	Plug	Ø14/8-12	2	319-596	—	Ø14/8-12	2	319-596	—	35	Plug	—	—
35	Plug	—	—	—	—	Ø14/8-12	2	319-596	—	36	Plug	—	—
36	Plug	—	—	—	—	Ø12/4,5-11	2	319-596	—				

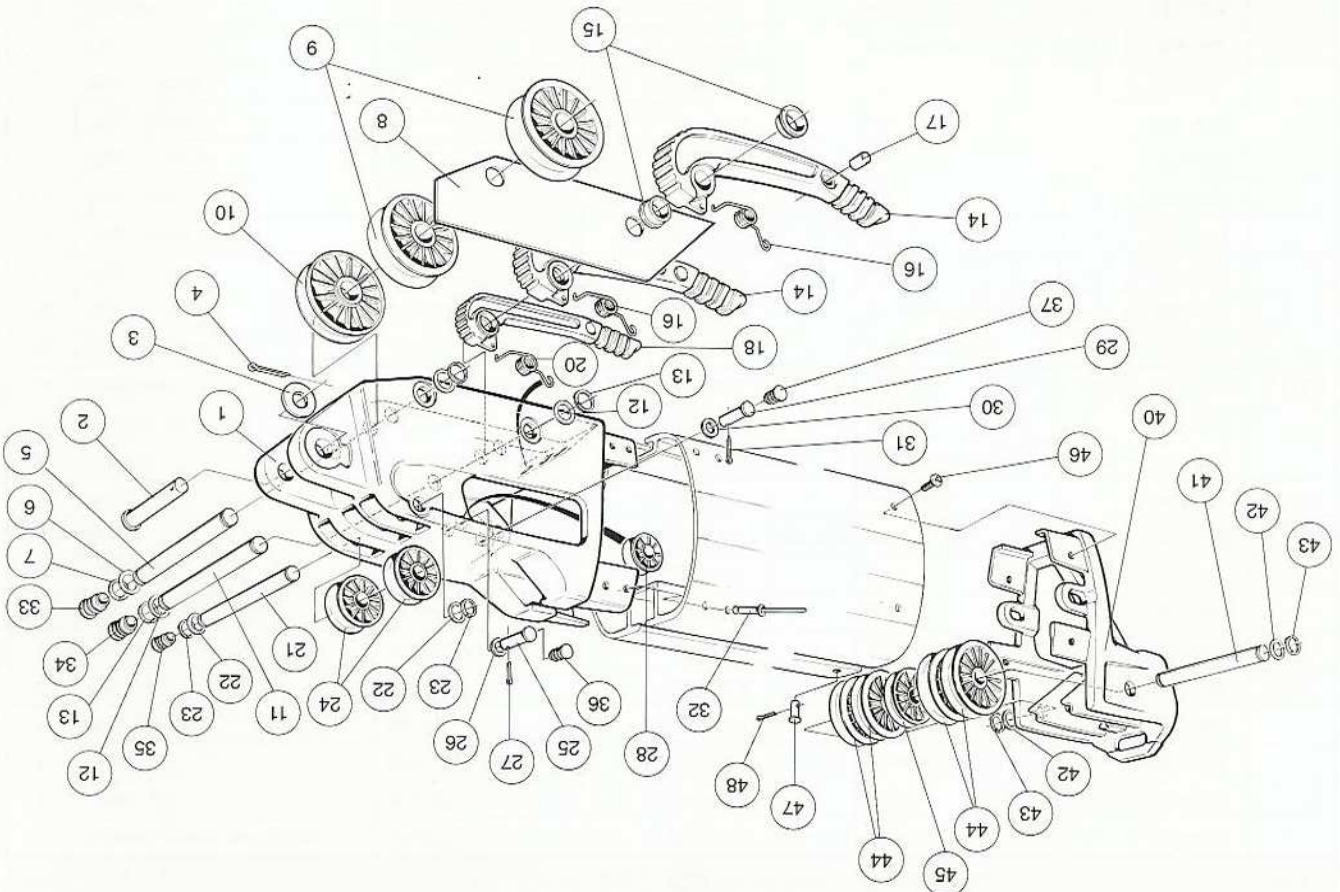
1) Plastic washers are only intended as spacers to fill out possible gaps between locking rings and fittings. Correct quantities cannot therefore be specified. The table shows the recommended quantity of plastic washers when retro-fitting.

2) Only two outer sheave slots of the three on the upper face on the outboard end-fitting should be used for luff reefing arrangements.

3) Fastening for outhaul block.



## Outboard boom end



Item		Description	Dimension	Qty	Part no.	Pos.	Dimension	Qty	Part no.	Pos.
40		Outboard boom end fitting	86/59	1	500-010	-	120/62	1	500-021	-
41		Pin	-	-	-	-	-	1	166-325	-
41		Clevis pin	ø8/55	1	165-119	-	-	-	-	-
42		Washer	-	-	-	-	ø20/10-0,8	(11)	164-028	-
43		Circular clip	-	-	-	-	ø12/9	2	301-073	-
43		Split pin	ø2,5x12	1	301-047	-	-	-	-	-
44		Sheave	ø45/8-13	2	504-320	-	ø45/10-11	3	504-504	0,1,2
45		Sheave	ø28/8-5,5	1	504-023-01	-	ø38/10-11	1	504-505	-
46		Screw	MRX-6x12	2	155-613	-	MRX 6x12	2	155-613	-

47	Clevis pin	-	-	-	-	ø5x28	1	165-611	-
48	Split pin	-	-	-	-	ø2x10	1	301-046	-

1) Plastic washers are only intended as spacers to fill out possible gaps between locking rings and fittings. Correct quantities cannot therefore be specified. The table shows the recommended quantity of plastic washers when retro-fitting.

## Inboard boom end

Item		Description	Dimension	Qty	Part no.	Pos.	Dimension	Qty	Part no.	Pos.
1		Inboard boom end fitting	143/76	1	509-017	—	171/94	1	509-018	—
2		Clevis pin	ø12x61	1	165-413	—	ø12x61	1	165-413	—
3		Washer	ø24/13-2,5	1	164-404	—	ø24/13-2,5	1	164-404	—
4		Split pin	ø4x18	1	301-061	—	ø4x18	1	301-061	—
5		Pin	ø10x82,5	1	166-313	—	ø12x98,5	1	166-308	—
6		Washer	ø20/10-0,8	2 <sup>1)</sup>	164-028	—	ø20/12,2-0,5	2 <sup>1)</sup>	164-025	—
7		Circular clip	ø12/9	2	301-073	—	ø14/11	2	301-070	—
8		Separator	44x159x2	2	537-151	—	—	—	—	—
9		Sheave	ø45/10-13	4	504-321	0,1,2,3	ø57/12-13	4	504-324	0,1,2,3
11		Pin	ø12x82	1	166-312	—	ø12x98,5	1	166-308	—
12		Washer	ø20/12,2-0,5	2 <sup>1)</sup>	164-025	—	ø20x12,2-0,5	2 <sup>1)</sup>	164-025	—
13		Circular clip	ø14/11	2	301-070	—	ø14/11	2	301-070	—
14		Jam lever	13x150	4	511-072	0,1,2,3	13x150	4	511-072	0,1,2,3
15		Flange bushing	ø18/14/12-6,5	8	306-326	—	ø18/14/12-6,5	8	306-326	—
16		Spring	ø1,8/Dy15/L8/N4,13	4	308-062	—	ø1,8/Dy15/L8/N4,13	4	308-062	—
17		Plug - White	ø8	1	319-529	—	ø8	1	319-529	—
17		Plug - Blue	ø8	1	319-530	—	ø8	1	319-530	—
17		Plug - Red	ø8	1	319-531	—	ø8	1	319-531	—
17		Plug - Yellow	ø8	1	319-532	—	ø8	1	319-532	—
17		Plug - Green	ø8	1	319-533	—	ø8	1	319-533	—
17		Plug - Black	ø8	1	319-534	—	ø8	1	319-534	—
21		Pin	ø10x82,5	1	166-313	—	ø10x93,5	1	166-309	—
22		Washer	ø20/10-0,8	2 <sup>1)</sup>	164-028	—	ø20/10-0,8	2 <sup>1)</sup>	164-028	—
23		Circular clip	ø12/9	2	301-073	—	ø12/9	2	301-073	—
24		Sheave	ø38/10-11	2	504-505	2)	ø45/10-13	2	504-321	2)
25		Clevis pin	ø10x28	1	165-203	—	ø10x28	1	165-203	—
26		Washer	ø20/10-2	1	164-004	—	—	—	—	—
27		Split pin	ø2,5x16	1	301-048	—	ø2,5x16	1	301-048	—
28		Sheave	ø38/10-11	1	504-505	—	ø38/10-11	1	504-505	—
29		Clevis pin	—	—	—	—	ø10x28	1	165-203	—
31		Split pin	—	—	—	—	ø2,5x16	1	301-048	—
32		Poprivet LD 870	ø6,4x17,8	6	167-002	—	ø6,4x17,8	6	167-002	—
33		Plug	ø14/8-12	2	319-596	—	ø15/9,5-12	2	319-597	—
34		Plug	ø15/9,5-12	2	319-597	—	ø15/9,5-12	2	319-597	—
35		Plug	ø14/8-12	2	319-596	—	ø14/8-12	2	319-596	—
36		Plug	ø14/8	2	319-596	—	ø14/8	2	319-596	—
37		Plug	—	—	—	—	ø14/8	2	319-596	—

1) Plastic washers are only intended as spacers to fill out possible gaps between locking rings and fittings. Correct quantities cannot therefore be specified. The table shows the recommended quantity of plastic washers when retro-fitting.

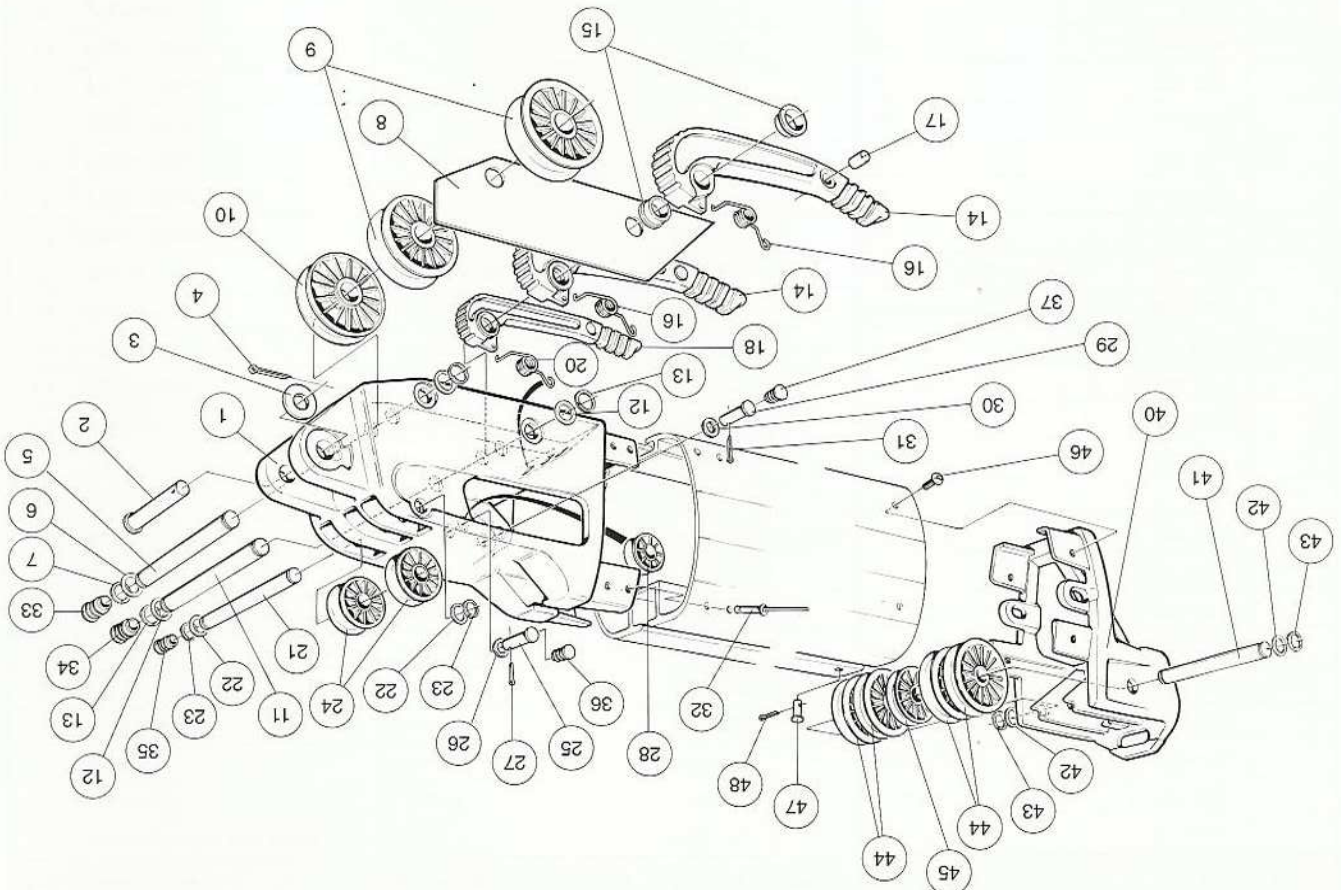
2) Only two outer sheave slots of the three on the upper face on the outboard end-fitting should be used for luff reefing arrangements.

171/94

Boom dimension: 143/76



## Outboard boom end



Item		Description	Dimension	Qty	Part no.	Pos.	Dimension	Qty	Part no.	Pos.
			Boom dimension: 143/76							
			171/94							
40	Outboard boom end fitting	143/76	1	500-019	—	1	174/94	1	500-016	—
41	Pin	ø10x82,5	1	166-313	—	—	ø12x98,5	1	166-308	—
42	Washer	ø20/10-0,8	21)	164-028	—	—	ø20/10-0,8	21)	164-028	—
43	Circular clip	ø12/9	2	301-073	—	—	ø14/11	2	301-070	—
44	Sheave	ø45/10-11	4	504-504	1,2,3,4	4	ø70/12-13	4	504-326	1,2,3,4
45	Sheave	ø38/10-11	1	504-505	0	1	ø57/12-13	1	504-324	0
46	Screw	MRX 6x12	4	155-613	—	—	MRX 6x12	4	155-613	—

47	Clevis pin	ø5x41	1	165-604	—	1	ø5x41	—	1	165-604	—	—	—
48	Split pin	ø2x10	1	301-046	—	1	ø2x10	—	1	301-046	—	—	—

1) Plastic washers are only intended as spacers to fill out possible gaps between locking rings and fittings. Correct quantities cannot therefore be specified. The table shows the recommended quantity of plastic washers when retro-fitting.

## Inboard boom end

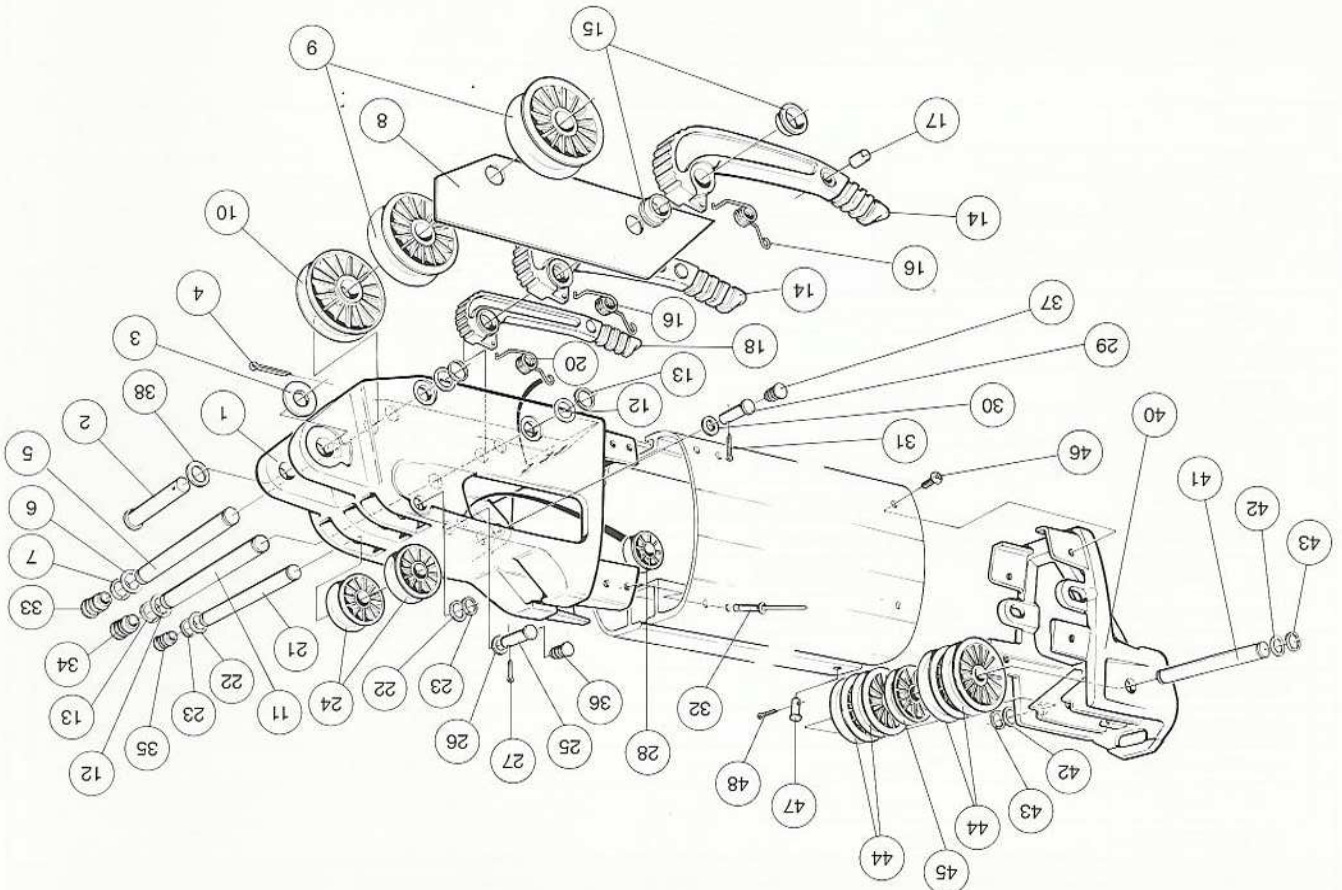
Item		Description		Dimension		Qty	Part no.	Pos.	Dimension		Qty	Part no.	Pos.
Boom dimension: 200/117													
1		Inboard boom end fitting	200/117	1	509-019	—	250/140	1	509-020	—		Pos.	
2		Clevis pin	ø16x76	1	165-559	—	ø16x76	1	165-559	—			
3		Washer	ø30/17-3	1	164-410	—	ø30/17-3	1	164-410	—			
4		Split pin	ø5x28	1	301-054	—	ø5x28	1	301-054	—			
5		Pin	ø14x124	1	166-304	—	ø14x124	1	166-322	—			
6		Washer	ø20/14-1	2 <sup>1)</sup>	164-026	—	ø20/14-1	2 <sup>1)</sup>	164-026	—			
7		Circular clip	ø16/13	2	301-071	—	ø16/13	2	301-071	—			
8		Separator	225x63x2	2	537-150	—	—	—	—	—			
9		Sheave	ø70/14-16	4	504-333	0,1,2,3,4	ø70/14-16	5	504-333	0,1,2,3,4			
10		Sheave	ø70/14-13	1	504-327	0	—	—	—	—			
11		Pin	ø14x124	1	166-304	—	ø14x124	1	166-322	—			
12		Washer	ø20/14-1	2 <sup>1)</sup>	164-026	—	ø20/14-1	2 <sup>1)</sup>	164-026	—			
13		Circular clip	ø16/13	2	301-071	—	ø16/13	2	301-071	—			
14		Jam lever	16x190	4	511-071	0,1,2,3,4	16x190	5	511-071	0,1,2,3,4			
15		Flange bushing	ø24/20/14-7,5	8	306-325	—	ø24/20/14-7,5	10	306-325	—			
16		Spring	ø2/Dy17,2/L8/N4,13	4	308-061	—	ø2/Dy17,2/L8/N4,13	5	308-061	—			
17		Plug – White	ø8	1	319-529	—	ø8	1	319-529	—			
17		Plug – Blue	ø8	1	319-530	—	ø8	1	319-530	—			
17		Plug – Red	ø8	1	319-531	—	ø8	1	319-531	—			
17		Plug – Yellow	ø8	1	319-532	—	ø8	1	319-532	—			
17		Plug – Green	ø8	1	319-533	—	ø8	1	319-533	—			
17		Plug – Black	ø8	1	319-534	—	ø8	1	319-534	—			
18		Jam lever	13x150	1	511-072	0	—	—	—	—			
20		Spring	ø1,8/Dy15/L8/N4,13	1	308-062	—	—	—	—	—			
21		Pin	ø12x112	1	166-305	—	ø14x130	1	166-301	—			
22		Washer	ø20/12,2-0,5	2 <sup>1)</sup>	164-025	—	ø20/14-1	2 <sup>1)</sup>	164-026	—			
23		Circular clip	ø14/11	2	301-070	—	ø16/13	2	301-071	—			
24		Sheave	ø45/12-16	2	504-502	2)	ø70/14-16	2	504-333	2)			
25		Clevis pin	ø10x32	1	165-205	—	ø10x35	1	165-221	—			
26		Washer	ø20/10-0,8	1 <sup>1)</sup>	164-028	—	ø20/10-0,8	1 <sup>1)</sup>	164-028	—			
27		Split pin	ø2,5x16	1	301-048	—	ø2,5x16	1	301-048	—			
28		Sheave	ø45/10-13	1	504-321	—	ø57/10-13	1	504-323	—			
29		Clevis pin	ø10x32	1	165-205	—	ø10x32	1	165-205	—			
30		Washer	ø20/10-2	1	164-004	—	—	—	—	—			
30		Washer	ø20/10-0,8	1 <sup>1)</sup>	164-028	—	ø20/10-0,8	1 <sup>1)</sup>	164-028	—			
31		Split pin	ø2,5x16	1	301-048	—	ø2,5x16	1	301-048	—			
32		Poprivet LD 870	ø6,4x17,8	8	167-002	—	ø6,4x17,8	12	167-002	—			
33		Plug	ø18/12-12	2	319-598	—	ø18/12-12	2	319-598	—			
34		Plug	ø18/12-12	2	319-598	—	ø18/12-12	2	319-598	—			
35		Plug	ø15/9,5-12	2	319-597	—	ø18/12-12	2	319-598	—			
36		Plug	ø14/8-12	2	319-596	—	ø14/8-12	2	319-596	—			
37		Plug	ø14/8-12	2	319-596	—	ø14/8-12	2	319-596	—			
38		Washer	ø24/16-0,8	1 <sup>1)</sup>	164-047	—	ø24/16-0,8	1 <sup>1)</sup>	164-047	—			

1) Plastic washers are only intended as spacers to fill out possible gaps between locking rings and fittings. Correct quantities cannot therefore be specified. The table shows the recommended quantity of plastic washers when retro-fitting.

2) Only two outer sheave slots of the three on the upper face on the outboard end-fitting should be used for luff reefing arrangements.



## Outboard boom end



Item	Description	Dimension	Qty	Part no.	Pos.	Dimension	Qty	Part no.	Pos.
40	Outboard boom end fitting	200/117	1	500-017	—	250/140	1	500-018	—
41	Pin	ø114x118	1	166-307	—	ø14x142	1	166-322	—
42	Washer	ø20/14-1	21)	164-026	—	ø20/14-1	21)	164-026	—
43	Circular clip	ø16/13	2	301-071	—	ø16/13	2	301-071	—
44	Sheave	ø70/14-16	4	504-333	1,2,3,4	ø90/14-16	5	504-336	0,1,2,3,4
45	Sheave	ø57/14-13	1	504-348	0	—	—	—	—
46	Screws	MRX 6x12	4	155-613	—	MRX 6x12	4	155-613	—

47	Clevis pin	ø5x41	1	165-604	—	ø5x41	1	165-604	—
48	Split pin	ø2x10	1	301-046	—	ø2x10	1	301-046	—

1) Plastic washers are only intended as spacers to fill out possible gaps between locking rings and fittings. The table shows the recommended quantity of plastic washers when retro-fitting. Correct quantities cannot therefore be specified.

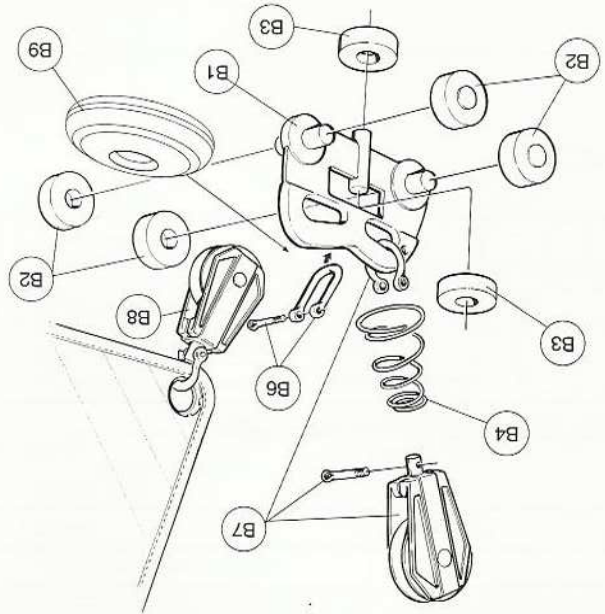
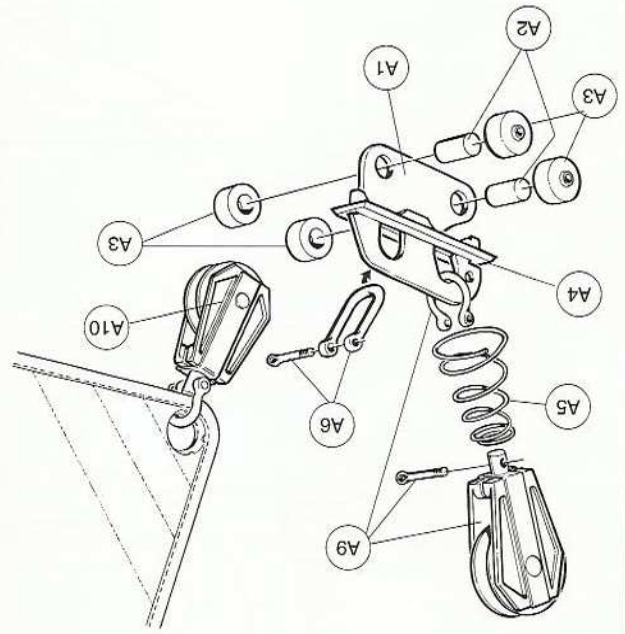


# Outhaul

		Conventional Outhaul				Furlin' Outhaul			
Item	Description	Dimension	Qty	Part no.	Dimension	Qty	Part no.	Dimension	Part no.
A1	Outhaul car "4"	-	-	-	66x46x2,5	1	507-519	-	-
A2	Pin	-	-	-	ø8x16	2	166-144	-	-
A3	Wheel	-	-	-	ø19/8-8	4	504-345	-	-
A4	Sliding Strip	-	-	-	70x14x9	1	530-713	-	-
A6	Shackle	5X15X34	1	307-001	M8x16x35	1	307-026	-	-
-	Recommended wire size	Ø3-7X19	1)	602-001	ø4-7X19	1)	602-002	-	-
-	Flange bushing	13/9,5/4/10	1	319-508	-	-	-	-	-
-	Recommended line size	ø8 Braid line	-	611-005	ø10 Braid line	-	611-005	-	-
-	Internal becket block	HA 93	1	538-502	R312	1	538-211	-	-
-	Block – fiddle/cleat 3)	HA 165	1	538-501	-	-	-	-	-
A1	Outhaul car "4"	-	-	-	66x46x2,5	1	507-519	-	-
A2	Pin	-	-	-	ø8x16	2	166-144	-	-
A3	Wheel	-	-	-	ø19/8-8	4	504-345	-	-
A4	Sliding Strip	-	-	-	70x14x9	1	530-713	-	-
A6	Shackle	5X15X34	1	307-001	M8x16x35	1	307-026	-	-
-	Recommended wire size	Ø3-7X19	1)	602-001	ø4-7X19	1)	602-002	-	-
-	Flange bushing	13/9,5/4/10	1	319-508	-	-	-	-	-
-	Recommended line size	ø8 Braid line	-	611-005	ø10 Braid line	-	611-005	-	-
A9	Block – single	-	-	-	R 311	1	538-982	-	-
A10	Block – single	-	-	-	R 501	1	538-923	-	-

		Conventional Outhaul				Furlin' Outhaul			
Item	Description	Dimension	Qty	Part no.	Dimension	Qty	Part no.	Dimension	Part no.
A1	Outhaul car "4"	74x52x4	1	507-569	74x52x4	1	507-567	-	-
A2	Pin	ø8x20	2	166-072	ø8x20	2	166-072	-	-
A3	Wheel	ø27,5/8,2-9,3	4	504-500	ø27,5/8,2-9,3	4	504-500	-	-
A6	Shackle	M8x16x35	1	307-026	M10x19x38	1	307-024	-	-
-	Recommended wire size	ø4-7x19	4)	602-002	ø4-7x19	4)	602-002	-	-
-	Recommended line size	ø10 Braid line	-	611-009	ø10 Braid line	-	611-009	-	-
-	International block	R 502 (single becket block)	1	538-927	R 521 (fiddle block)	1	538-927	-	-
B1	Outhaul ca "4+2"	75x50	1	511-802	75x50	1	511-802	-	-
B2	Wheel (Vertical)	ø27,5/8,2-9,3	4	504-500	ø27,5/8,2-9,3	4	504-500	-	-
B3	Wheel (Horizontal)	ø25,3/8-6,5	2	504-501	ø25,3/8-6,5	2	504-501	-	-
B4	Spring	ø2,25/Dy36,5-26/L70	1	308-074	ø2,25/Dy36,5-26/L70	1	308-074	-	-
B5	Recommended line size	ø10 Braid line	-	611-009	ø10 Braid line	-	611-009	-	-
B6	Shackle dito	M6x13x25	1	307-020	M6x13x25	1	307-020	-	-
B7	Block – single	R 501	1	538-923	R 501	1	538-923	-	-
B8	Block – single	R 601	1	538-900	R 601	1	538-900	-	-
B9	Doughnut	ø70/18-20	1	319-723	ø70/18-20	1	319-723	-	-

1)	L = Extrusion length – 350 mm.
3)	To be assembled at the inboard end.
4)	L = Extrusion length – 300 mm.
5)	If the main sheet is attached more than 1,5 m from the outboard boom end, two sliders are recommended to distribute the main sheet load.



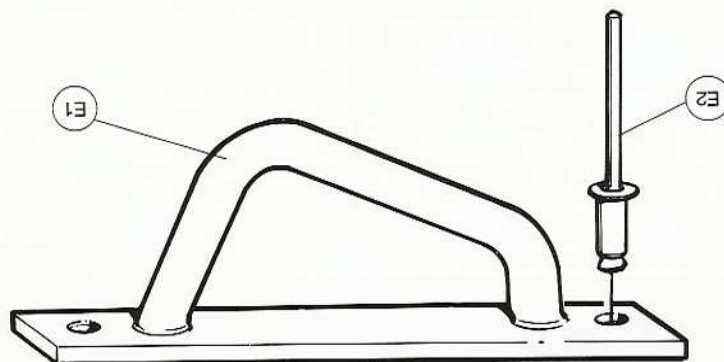
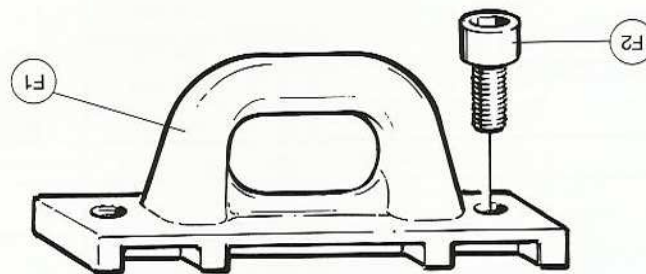
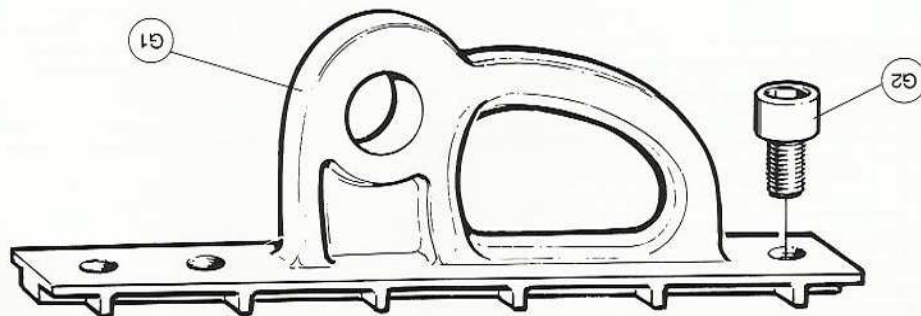
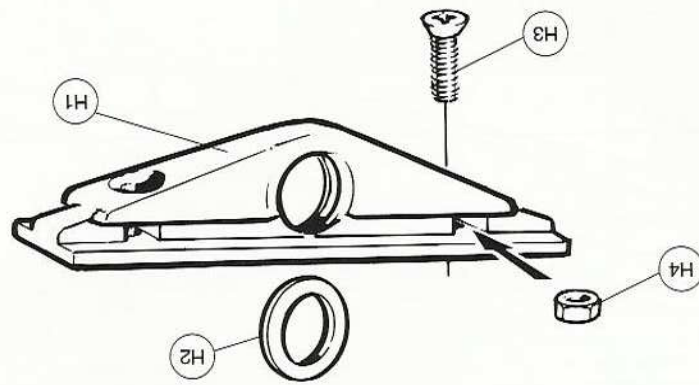
5) If the main sheet is attached more than 1.5 m from the outboard boom end, two sliders are recommended to distribute the main sheet load.

1)	L= Extrusion length – 350 mm.
3)	To be assembled at the inboard end.
4)	L= Extrusion length – 300 mm.

Conventional									
Item	Description	Dimension	Qty	Part no.	Dimension	Qty	Part no.	Qty	Part no.
C1	Outhaul car "6"	90x54	1	511-570	90x54	1	511-570	1	511-570
C2	Wheel	ø27,5/8,2-9,3	6	504-500	ø27,5/8,2-9,3	6	504-500	6	504-500
C3	Shackle	M10x19x38	1	307-024	M10x19x38	1	307-024	1	307-024
–	Recommended wire size	ø5-7x19	4)	602-003	ø5-7x19	4)	602-003	4)	602-003
–	Recommended line size	ø10 Braid line	–	611-009	ø10 Braid line	–	611-009	–	611-009
–	Internal fiddle block	R 621	1	538-905	R 621	1	538-905	1	538-905
Furlin'									
B1	Outhaul car "6+4"	132x60	1	511-803	132x60	1	511-803	1	511-803
B2	Wheel (Vertical)	ø27,5/8,2-9,3	6	504-500	ø27,5/8,2-9,3	6	504-500	6	504-500
B3	Wheel (Horizontal)	ø25,3/7,95-6,5	4	504-501	ø27,3/7,95-6,5	4	504-501	4	504-501
B4	Spring	ø2,5/Dy 36,5-26/L70	1	308-074	ø2,5/Dy36,5-26/L70	1	308-074	1	308-074
B5	Recommended line size	ø12 Braid line	–	611-013	ø12 Braid line	–	611-013	–	611-013
B6	Shackle dito	M8x16x32	1	307-021	M8x16x32	1	307-021	1	307-021
B7	Block – single	R 601	1	538-900	R 601	1	538-900	1	538-900
B8	Block – single	R 801	1	538-950	R 801	1	538-950	1	538-950
B9	Doughnut	ø70/18-20	1	319-723	ø70/18-20	1	319-723	1	319-723
Boom dimension: 200/117									
Boom dimension: 250/140									



1)	L= Extrusion length – 350 mm.
3)	To be assembled at the inboard end.
4)	L= Extrusion length – 300 mm.
5)	If the main sheet is attached more than 1.5 m from the outboard boom end, two sliders are recommended to distribute the main sheet load.



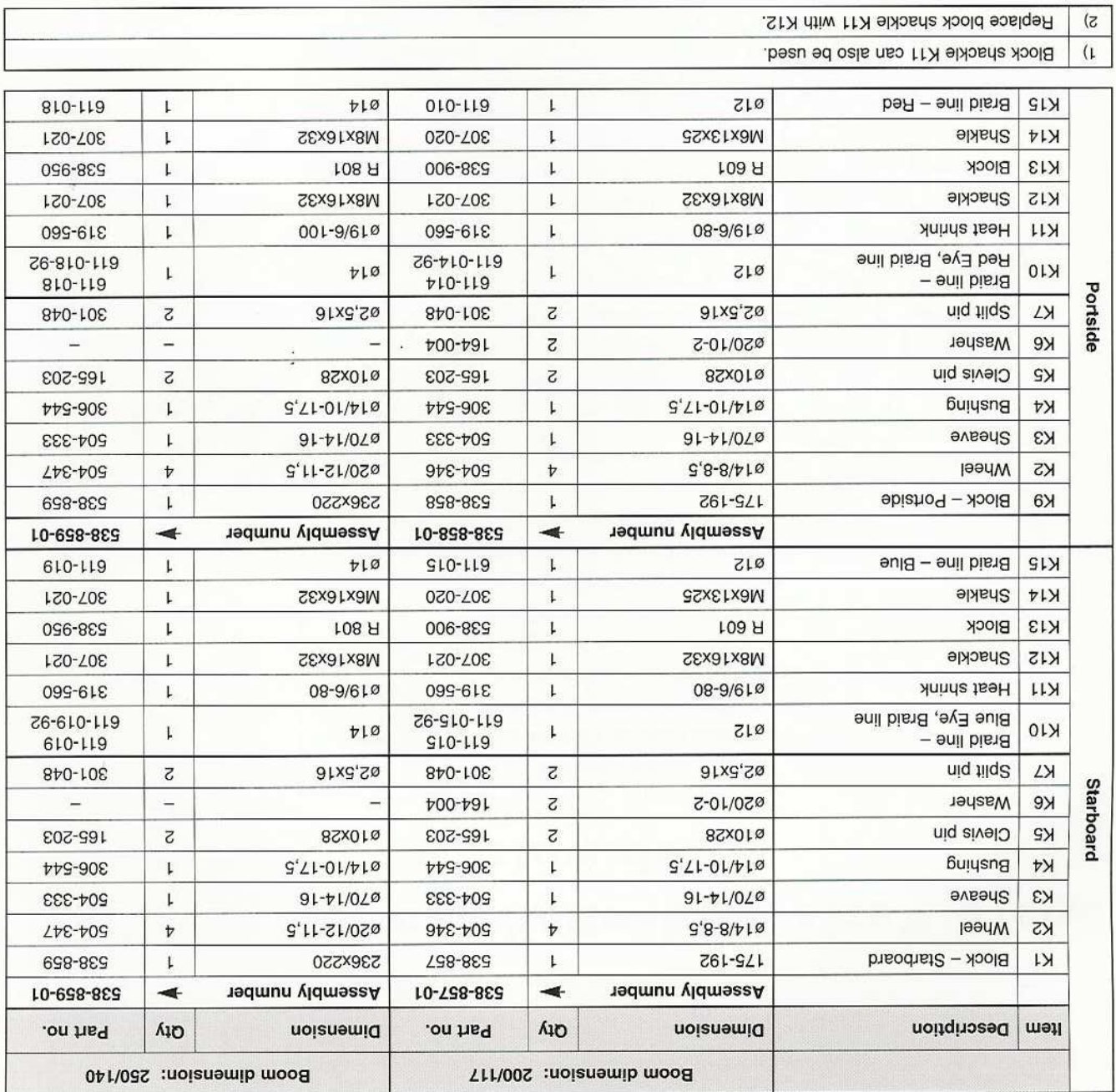


[illegible]

Item		Description		Dimension		Qty	Part no.	Boom dimension: 143/76		Boom dimension: 171/94	
				Assembly number		538-853-01		Assembly number		538-855-01	
K1	Block – Starboard	140x120	1	1	538-853	175x160	1	538-855	504-346	4	504-333
K2	Wheel	ø14/8-8,5	4	1	504-324	ø70/14-16	1	306-544	165-203	2	164-004
K3	Sheave	ø57/12-13	1	1	306-543	ø14/10-17,5	1	306-544	165-203	2	164-004
K4	Bushing	ø12/10-14,5	1	1	306-543	ø14/10-17,5	1	306-544	165-203	2	164-004
K5	Clevis pin	ø10x22	2	2	165-202	ø10x28	2	165-203	165-203	2	164-004
K6	Washer	–	–	–	–	ø20/10-2	2	164-004	165-203	2	164-004
K7	Split pin	ø2,5x16	2	2	301-048	2,5x16	2	301-048	165-203	2	164-004
K10	Braid line – Blue Eye, Braid line	ø10	1	1	611-011-92	ø12	1	611-015-92	319-560	1	611-015
K11	Heat shrink	ø19/6-60	1	1	319-560	ø19/6-80	1	319-560	319-560	1	611-015
K12	Shackle	M6x13x25	1	1	307-020 1)	M6x13x25	1	307-020 1)	538-900 2)	1	307-020 2)
K13	Block	R 501	1	1	538-923 2)	R 601	1	538-900 2)	538-900 2)	1	307-020 2)
K14	Shackle	M5x15x24	1	1	307-010 2)	M6x13x25	1	307-020 2)	611-015	1	611-015
K15	Braid line – Blue	ø10	1	1	611-011	ø12	1	611-015	611-015	1	611-015
				Assembly number		538-854-01		Assembly number		538-856-01	
K9	Block – Portside	140-120	1	1	538-854	175x160	1	538-856	504-346	4	504-333
K2	Wheel	ø14/8-8,5	4	1	504-324	ø70/14-16	1	504-333	504-333	1	504-333
K3	Sheave	ø57/12-13	1	1	306-543	ø14/10-17,5	1	306-544	165-203	2	164-004
K4	Bushing	ø12/10-14,5	1	1	306-543	ø14/10-17,5	1	306-544	165-203	2	164-004
K5	Clevis pin	ø10x22	2	2	165-202	ø10x28	2	165-203	165-203	2	164-004
K6	Washer	–	–	–	–	ø20/10-2	2	164-004	165-203	2	164-004
K7	Split pin	ø2,5x16	2	2	301-048	2,5x16	2	301-048	165-203	2	164-004
K10	Braid line – Red Eye, Braid line	ø10	1	1	611-010-92	ø12	1	611-014-92	319-560	1	611-014
K11	Heat shrink	ø19/6-60	1	1	319-560	ø19/6-80	1	319-560	319-560	1	611-014
K12	Shackle	M6x13x25	1	1	307-020 1)	M6x13x25	1	307-020 1)	538-900 2)	1	307-020 2)
K13	Block	R 501	1	1	538-923 2)	R 601	1	538-900 2)	538-900 2)	1	307-020 2)
K14	Shackle	M5x15x24	1	1	307-010 2)	M6x13x25	1	307-020 2)	611-014	1	611-014
K15	Braid line – Blue	ø10	1	1	611-011	ø12	1	611-014	611-014	1	611-014



## 15





# Fast access to our know-how, worldwide

The Seldén Group is one of the world's leading manufacturers of spar and rigging systems. Our comprehensive range caters for dinghies, yachts up to 30 tonnes. The group consists of Seldén Mast AB and VRAB, both in Sweden, and Seldén Masts Ltd in the UK. Our well known product names are Seldén, Furler, Furlin, Furler Main, Proctor and Hasselfors.



At Seldén we are sailors. Our extensive sailing experience combined with practical engineering knowledge are at the heart of our business. It guarantees care, attention to detail and a total commitment to quality.

With development and production facilities on Sweden's west coast and England's south coast, we have unique opportunities to test and develop our products under tough, practical, sea-going conditions. All manufacturing is carried out in accordance with strict quality control routines.

Our quality philosophy does not stop at the production line, but is extended to our authorized distribution and service network through a complete programme of training courses, instruction manuals and films. Everything, in fact, to ensure customer satisfaction.

Based on our global success with Furler we have built a network of over 500 authorized dealers covering the marine markets of the world. So wherever you sail, you can be sure of fast access to our service, spare parts and know-how.

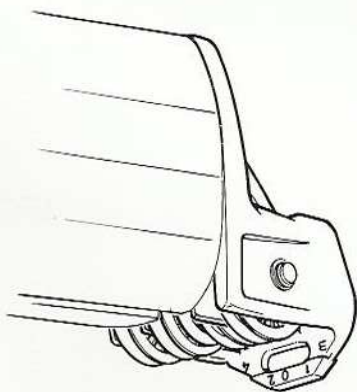


## General information

Boom equipment can vary from boat to boat. This Part List does not list the variations, but gives the maximum quantities that each boom end-fitting can be fitted with for each part number. The boom end-fittings can thus easily be fitted with supplementary parts at a later date. Because the same spareparts drawing is used for all gooseneck end-fittings or for all outboard end-fittings, more items are often shown on the drawing than can actually be fitted.

Nor are the spares drawings necessarily identical to the parts listed.

"Inboard and Outboard boom end" have numbers and letters marked at most of the sheave slots. The spare parts tables refer to these markings ("Pos.") for sheaves and stoppers as they can have different dimensions even if on the same end-fitting.



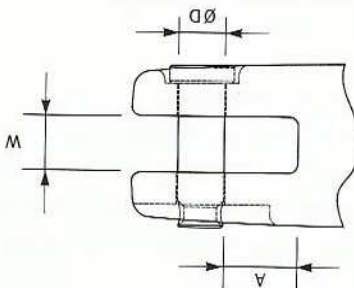
## Boom specifications

Extrusion dimensions mm	Wy min. cm <sup>3</sup> ± 10%	Wx min. cm <sup>3</sup> ± 10%	Weight kg/m +20% -0%	Sail groove mm	Lower T-track Dimensions mm	No. of Reefing lines	Size of reefing lines mm	Internal outhaul ratio ***
86/59	14.0	7.8	1.67	4.0 ± 1.0	16x4	2*	ø8	1:3
120/62	24.8	13.7	2.16	5.5 ± 0.75	26x6	2+1 "flattening" reef	ø10	1:3
143/76	39.4	20.9	2.83		25x6	3**	ø10	1:3
171/94	67.7	35.7	4.03		25x6	3**	ø12	1:4
200/117	112	55.5	5.36		32x8	4**	ø12	1:4
250/140	185	91.4	6.96	6.25 ± 0.75	32x8	4**	ø14	1:4

\* 86/59 can not be fitted with "Single-Line Reefing"  
 \*\* Maximum two "Single-Line Reefs" can be fitted.  
 \*\*\* Further reefs must be with Running Hooks.  
 Conventional Outhaul

## Dimensions inboard boom end

Extrusion dimensions mm	A	W	ØD
86/59	9	15	8
120/62	14	20	10
143/76	15	20	12
171/94	16	20	12
200/117	20	30	16
250/140	18	30	16



Selden Mast AB reserves the right to alter the design or specification without prior warning, to allow unrestricted future product development.