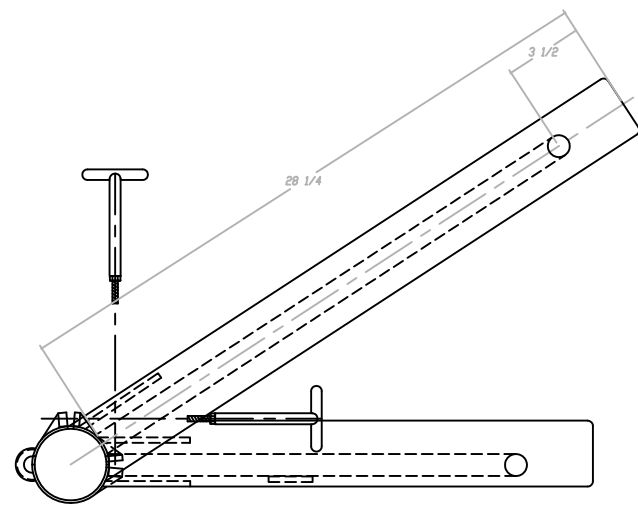
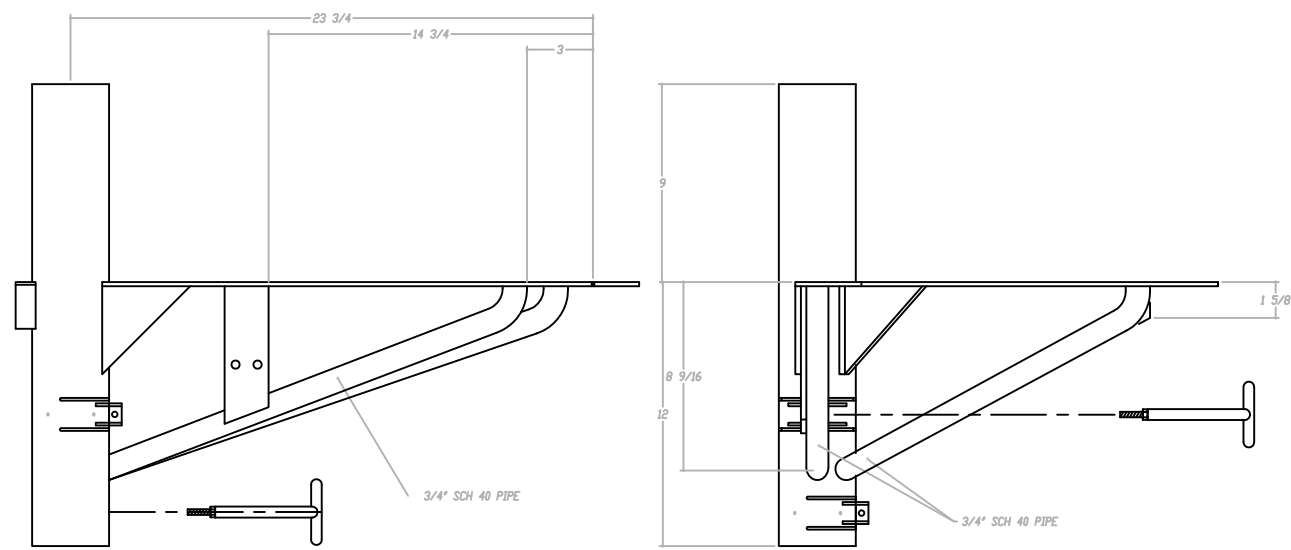
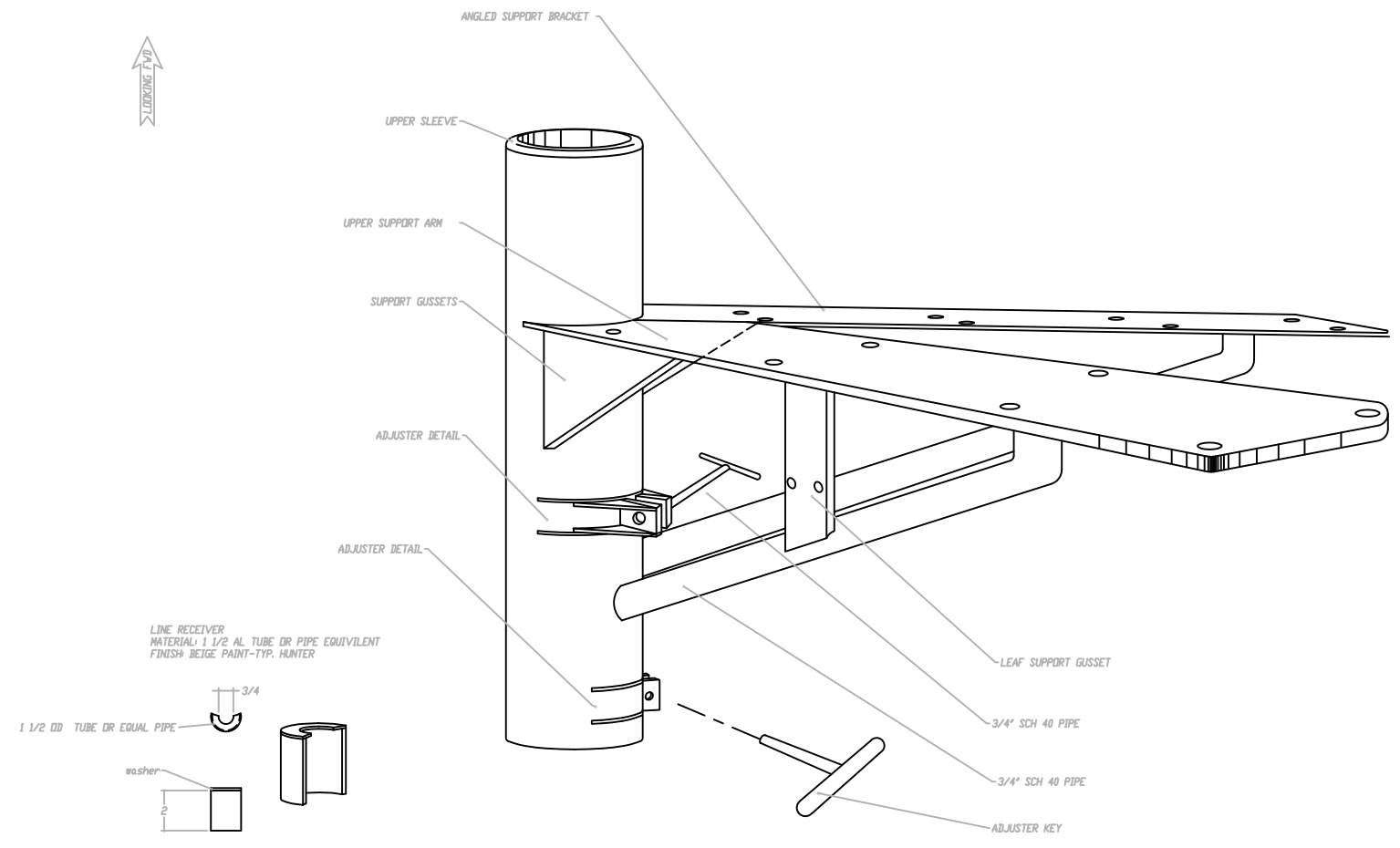
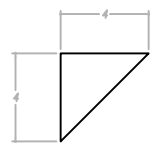


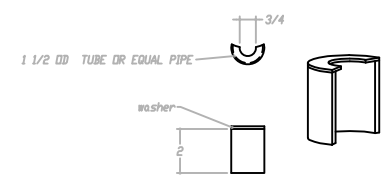
# MILD STEEL



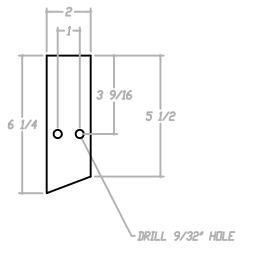
**SUPPORT GUSSETS**  
 # MATERIAL: 3/16" PLATE  
 QUANTITY: 3 PER ASSEMBLY  
 FINISH: PAINT HUNTER BEIGE



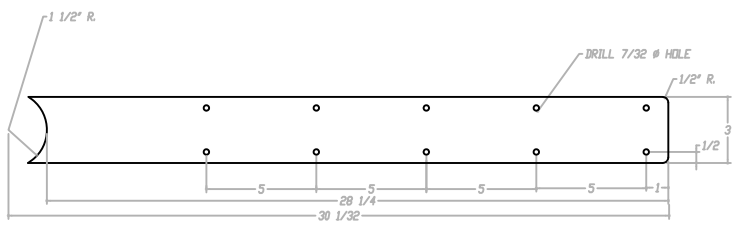
**LINE RECEIVER**  
 MATERIAL: 1 1/2" AL TUBE OR PIPE EQUIVALENT  
 FINISH: BEIGE PAINT-TYP. HUNTER



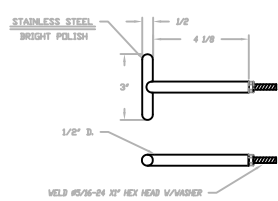
**LEAF SUPPORT GUSSET**  
 # MATERIAL: 1/4" STEEL PLATE  
 QUANTITY: 1 PER ASSEMBLY  
 FINISH: PAINT HUNTER BEIGE



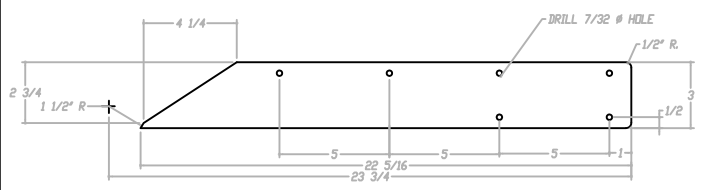
**ANGLED SUPPORT BRACKET**  
 # MATERIAL: 3/16" STEEL PLATE  
 QUANTITY: 1 PER ASSEMBLY  
 FINISH: PAINT HUNTER BEIGE



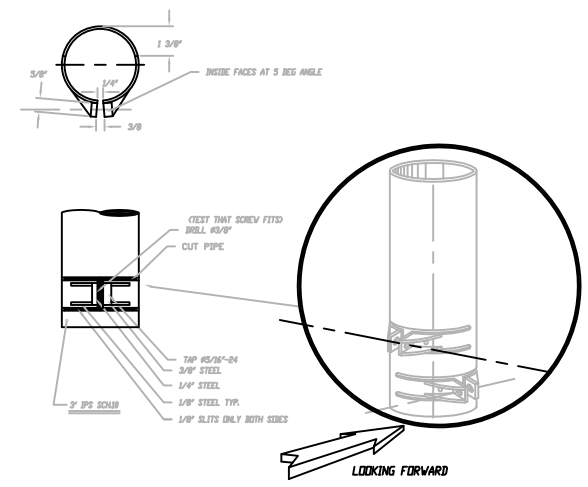
**ADJUSTER KEY**  
 # MATERIAL: 1/2" SS ROD  
 QUANTITY: 2 PER ASSEMBLY  
 FINISH: BRIGHT POLISH



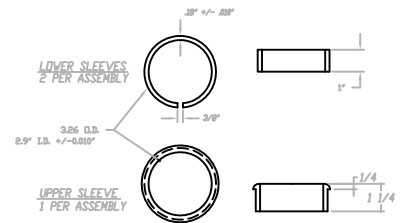
**UPPER SUPPORT ARM**  
 # MATERIAL: 3/16" STEEL PLATE  
 QUANTITY: 1 PER ASSEMBLY  
 FINISH: PAINT HUNTER BEIGE



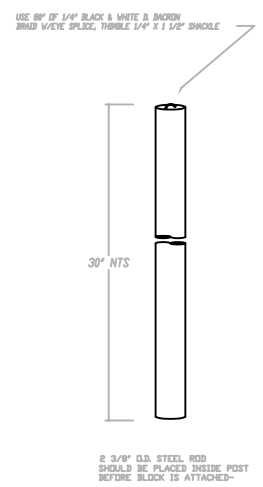
**ADJUSTER DETAIL**  
 # MATERIALS LISTED BELOW  
 QUANTITY: 2 PER ASSEMBLY  
 FINISH: TYP. HUNTER BEIGE



**SLEEVES**  
 # MATERIAL: UHMW OR DELRIN  
 QUANTITY: 2 LOWER, 1 UPPER  
 FINISH: SMOOTH, NATURAL COLOR  
 THESE SHOULD BE HELD IN PLACE WITH 4 SET SCREWS PER SLEEVE AND SHOULD NOT PENETRATE INTERIOR WALL OF SLEEVES  
 # LOWER SLEEVES MOUNT AT ADJUSTER ARMS #



**COUNTERWEIGHT**  
 # MATERIAL: 2 3/8\"/>



REVISIONS		DO NOT SCALE		HUNTER	
NO.	DATE	DESCRIPTION	BY	CHKD BY	APPROVED BY
1		ISSUED FOR PRODUCTION			
2		REVISIONS			
3		1 PLACE REVISION	NA		
4		2 PLACE REVISION	NA		
5		3 PLACE REVISION	NA		
6		4 PLACE REVISION	NA		
7		5 PLACE REVISION	NA		
8		6 PLACE REVISION	NA		
9		7 PLACE REVISION	NA		
10		8 PLACE REVISION	NA		
11		9 PLACE REVISION	NA		
12		10 PLACE REVISION	NA		
13		11 PLACE REVISION	NA		
14		12 PLACE REVISION	NA		
15		13 PLACE REVISION	NA		
16		14 PLACE REVISION	NA		
17		15 PLACE REVISION	NA		
18		16 PLACE REVISION	NA		
19		17 PLACE REVISION	NA		
20		18 PLACE REVISION	NA		
21		19 PLACE REVISION	NA		
22		20 PLACE REVISION	NA		
23		21 PLACE REVISION	NA		
24		22 PLACE REVISION	NA		
25		23 PLACE REVISION	NA		