



972

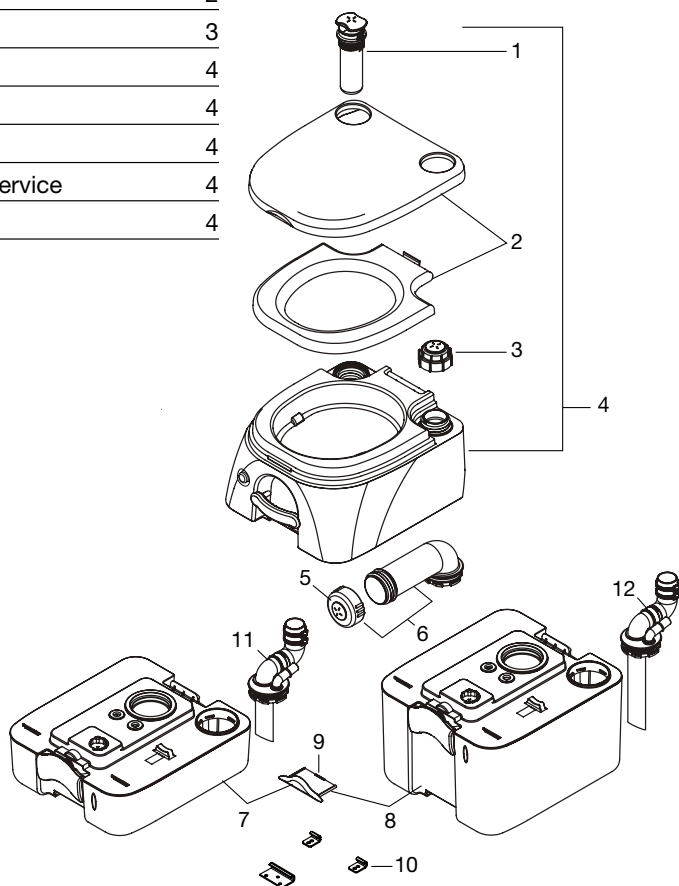
976

970

PORTABLE TOILETS	INSTRUCTION MANUAL	EN 1-4
ASEOS PORTÁTILES	MANUAL DE INSTRUCCIONES	ES 5-7
TOILETTES PORTABLES	MODE D'EMPLOI	FR 8-10
MOBILE TOILETTER	INSTRUKTIONSMANUAL	DA 11-13
CAMPING-TOILETTEN	BEDIENUNGSANWEISUNG	DE 14-16
TRANSPORTABLA TOALETTER	HANDBOK	SV 17-19
WC PORTATILI	MANUALE DI ISTRUZIONI	IT 20-22
DRAAGBARE TOILETTEN	INSTRUCTIHANDLEIDING	NL 23-25
BÆRBARE TOALETTER	BRUKSANVISNING	NO 26-28
ПЕРЕНОСНЫЕ ТУАЛЕТЫ	ИНСТРУКЦИЯ ПО ЭКСПЛУАТАЦИИ	RU 29-31
PRZENOŚNE TOALETY	INSTRUKCJA OBSŁUGI	PL 32-34
SANITAS PORTÁTEIS	MANUAL DE INSTRUÇÕES	PT 35-37
KANNETAVAT KÄYMÄLÄT	KÄYTTÖOHJE	FI 38-40
ΦΟΡΗΤΕΣ ΤΟΥΑΛΕΤΕΣ	ΕΓΧΕΙΡΙΔΙΟ ΟΔΗΓΙΩΝ	EL 41-43
ポータブルトイレ	取扱説明書	JA 44-46
便携式马桶	使用手册	ZH 47-49

Parts	2
Operation	3
Dimensions	4
Cleaning and Storage	4
More Information	4
Warranty and Customer Service	4
Product Liability	4

PARTS




NO.	PART NUMBER	DESCRIPTION
1	860003853115288	Air pump
2	860003853115296	Seat cover and seat
3	860003853115304	Water cap
4	860003853115312	Bowl assembly
5	860003853115320	Discharge spout cap
6	860003853115338	Discharge spout assembly
7	860003853115346 860003853115353	Holding tank assembly (tan) Holding tank assembly (gray)
8	860003853115361 860003853115379	Holding tank assembly (tan) Holding tank assembly (gray)
9	860003853115387 860003853115395	Locking handle (tan) Locking handle (gray)
10	860003853200056	Mounting brackets
11	860003853200064	MSD fitting (972)
12	860003853200072	MSD fitting (976)

OPERATION

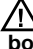
Prepare toilet for use


1.

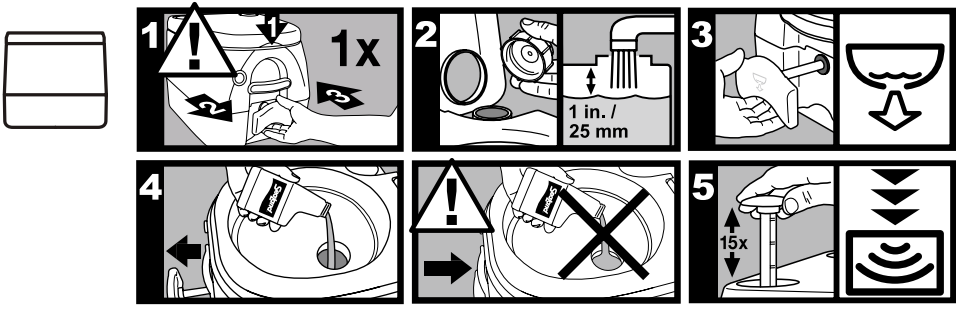
 **CAUTION!** With seat lid closed, pull flush handle to open slide valve, then push to close. This relieves air pressure that may be created in lower holding tank due to changes in temperature or altitude.
2.

Remove water cap and fill upper tank until it reaches about 1 inch (25 mm) below opening. Replace cap.
3.

Pull flush handle to open slide valve.
4.


Pour deodorant directly into lower tank, then close slide valve.
-  **CAUTION!** Never pour deodorant into bowl with slide valve closed.
5.

Stroke air pump about 15 times or until air emits through relief valve on water cap.
-  **CAUTION!** Do not over pressurize upper tank by covering relief valve. Do not pressurize upper tank when disconnected from lower tank.



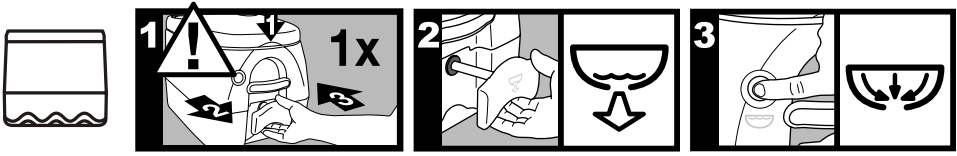
Use toilet

1.

 **CAUTION! BEFORE EACH USE,** with seat lid closed, pull flush handle to open slide valve, then push to close. This relieves air pressure that may be created in lower holding tank due to changes in temperature or altitude.
2.

Pull flush handle to release waste into lower tank.
3.

Push flush button to rinse bowl. Push flush handle to close slide valve.



Empty holding tank

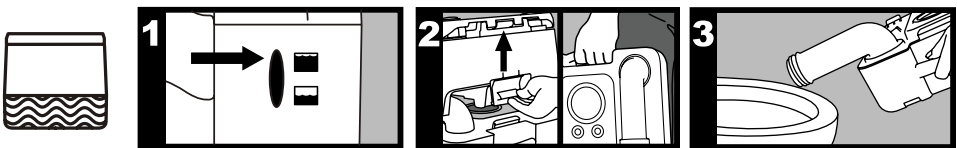
1.

When tank level indicator shows “full,” empty the lower tank.
- If toilet is installed with optional mounting brackets, pull locking handle from lower tank. Lift and move toilet to reach rear latch.
2.

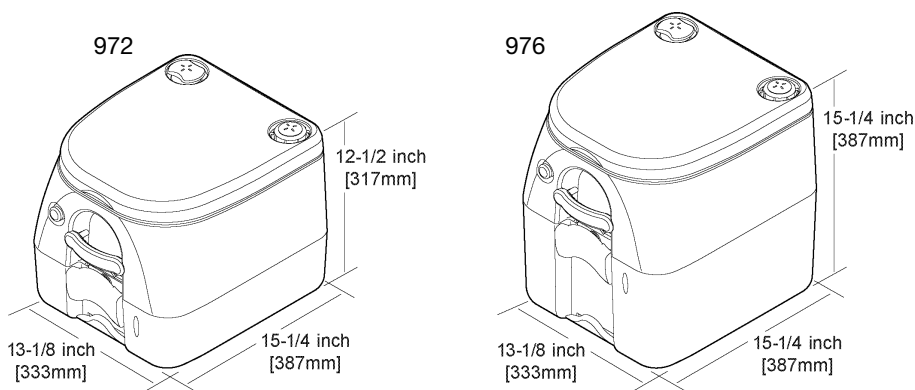
Pull up on rear latch to separate upper tank from lower tank. Carry lower tank to authorized waste disposal area (or normal toilet).
3.

Rotate discharge spout away from tank, and open vent on top of holding tank. Empty tank.
4.

If water is available, rinse lower tank before reassembling portable toilet.



DIMENSIONS



All dimensions may vary
± 3/8 inch (10mm).

CLEANING AND STORAGE

Clean with mild cleanser that will not harm the finish. Avoid petroleum-based household cleaners. Store the portable toilet dry and clean.

MORE INFORMATION

For more information on this toilet and other Dometic products, visit www.dometic.com.

WARRANTY AND CUSTOMER SERVICE

Warranty arrangements are in accordance with EC Directive 44/1999/CE and the normal conditions applicable for the country concerned. For warranty or other servicing, please contact our Dometic Service department. Any damage due to improper use is not covered by the warranty.

The warranty does not cover any modifications to the appliance or the use of non-original Dometic parts; the warranty does not apply if the installation and operating instructions are not adhered to and no liability shall be entertained.

Parts can be ordered throughout Europe from our Dometic Service department.

PRODUCT LIABILITY

Product liability of Dometic GmbH does not include damages which may arise from: faulty operation; improper alterations or intervention in the equipment; adverse effects from the environment which may impact the equipment itself or the direct vicinity of the equipment or persons in the area.