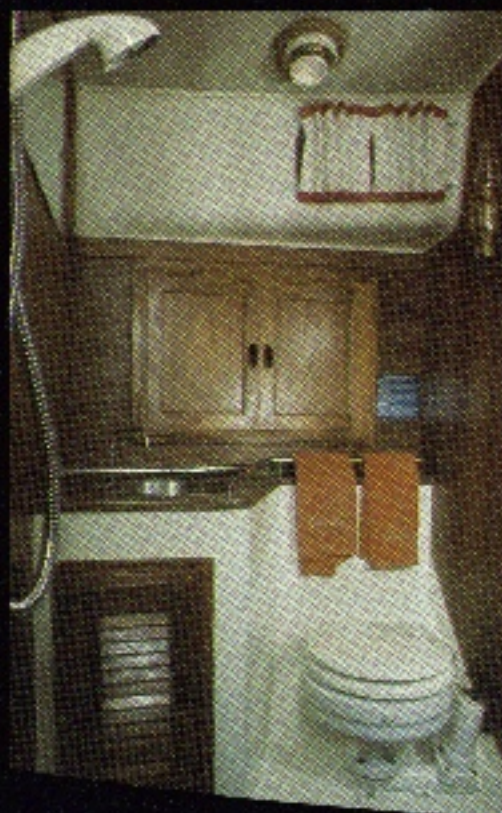


# The Down Easter 38







## Down East Yachts Inc.

700 E. Alton Ave., Santa Ana, Ca. 92705  
(714) 979-6850







**CONEYS MARINE CORPORATION**  
 32 NEW YORK AVENUE  
 HUNTINGTON, NY 11743  
 (516) 421-3366

The DownEaster 38 American Cruising Classic, built to uncompromising standards, is capable of comfortable and dependable long distance sailing. The cutter, ketch or schooner rigs are easily handled by a crew of two, thanks to the size of the sails, location of winches and club-footed stays'l. Windward performance is truly amazing, as well as behavior on every other point of sail. The well-balanced rigs will point high into the wind with an easy helm. The 38' will sail upright and dry in a fifty knot blow with reefed main and stays'l.

On board, safety and dependability are designed and built into every DownEaster. Decks are non-skid silica-sand set in polyurethane adhesive coatings. Vinyl-covered stainless steel life lines, high bulwarks, and reserve hull buoyancy ensure safety at sea and peace of mind.

The DownEaster 38 can be maintained with a minimum of effort. The rudder is molded of glass reinforced high density foam over a steel backbone with a heavy wall stainless steel tubular shaft. It is designed to float in event of needed

repairs at sea. The diesel engine has a 12V electrical start motor and a manual crank start. An alarm system bell warns of engine oil low pressure or high water temperature.

Only the finest materials are used in the construction of a DownEaster. The hull, hand-laid up fiberglass with triple laminate on the center-line meeting, far exceeds Lloyd's specifications for weight. All deck hardware is through-bolted, backed and bedded. Electrical wiring is color-coded and oversized to meet or exceed BIA/ABYC requirements.

Rigging is stainless steel wire rope with swaged eyes. All through-hull fittings below the waterline are solid bronze sea cocks. The joiner work in cabinets, lockers, cabin bulkheads and styling trim is solid Burmese teak, providing practicality as well as rare beauty, and ample evidence of the meticulous care with which a DownEaster is built. Traditional in beauty, modern in cruising efficiency, the DownEaster is truly a modern classic fit and ready to go to sea.

Down East Yachts, Inc.  
 700 E. Alton Ave.  
 Santa Ana, California 92705  
 (714) 979-6850  
 Bob Poole, Builder

38



**Down East**  
 Yachts Inc.



**Dimensions**

displacement	19,500 lbs.
draft	4'11"
beam	11'10"
L.O.A. (cutter & ketch)	41'9"
L.O.A. (schooner)	43'3"
L.W.L.	29'
L.O.D. (not including bowsprit)	38'
ballast (internal)	8,000 lbs.
fuel	90 gals.
water	50 gals.
diesel range	730 mi.

**Sail area (cutter)**

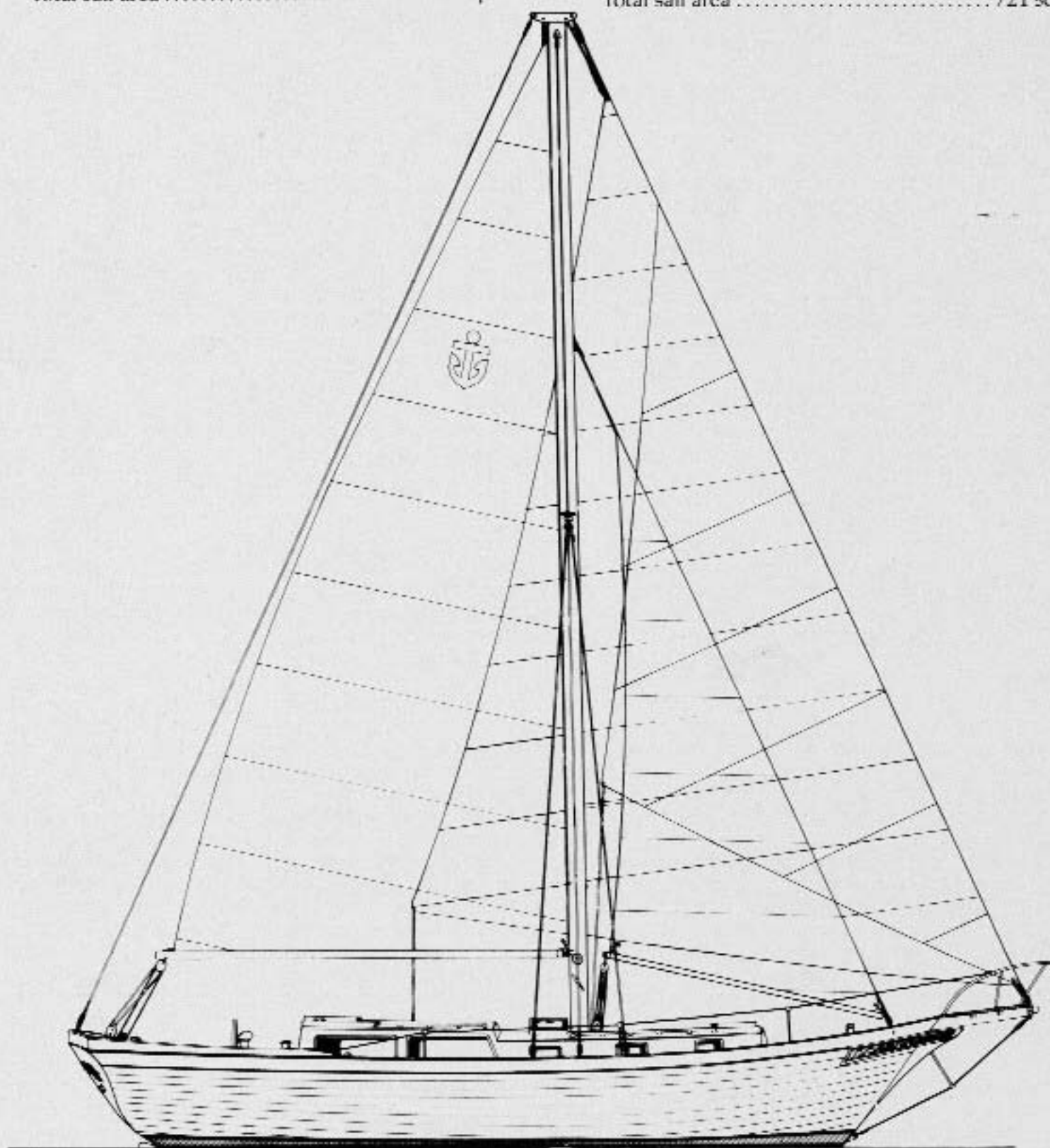
mains'l	320 sq. ft.
working jib	234 sq. ft.
stays'l	128 sq. ft.
yankee jib	363 sq. ft.
Total sail area	682 sq. ft.

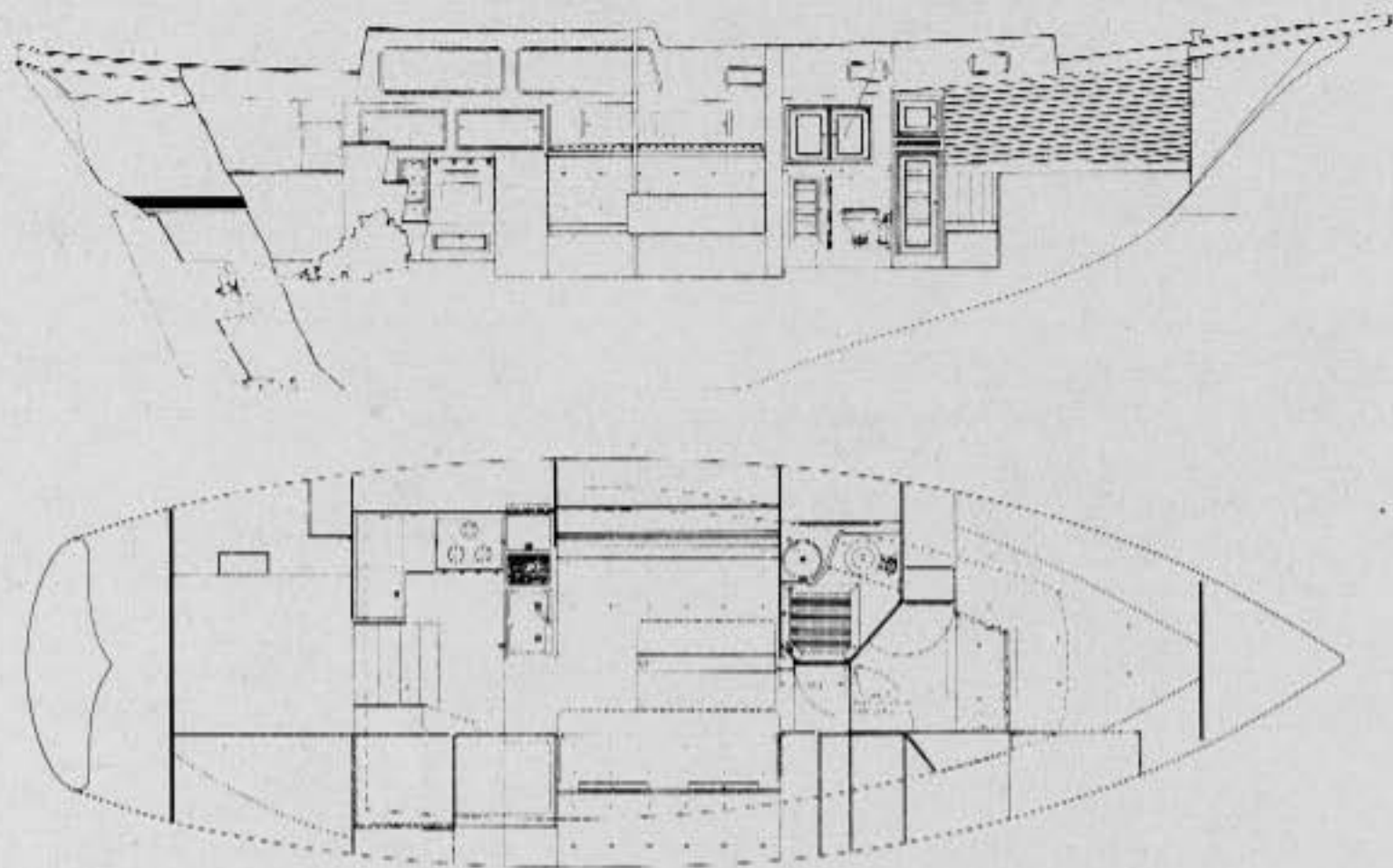
**Sail area (ketch)**

mains'l	231 sq. ft.
working jib	322 sq. ft.
jib stays'l	90 sq. ft.
yankee jib	378 sq. ft.
mizzen	118 sq. ft.
mizzen stays'l	255 sq. ft.
Total sail area	761 sq. ft.

**Sail area (schooner)**

mains'l	242 sq. ft.
forestays'l	87 sq. ft.
main stays'l	115 sq. ft.
fisherman	184 sq. ft.
gollywobbler	498 sq. ft.
gollyaker	727 sq. ft.
working jib	93 sq. ft.
yankee jib	165 sq. ft.
Total sail area	721 sq. ft.





# The DownEaster 38

The DownEaster 38 is decidedly handsome below deck, spacious with full standing headroom throughout, yet completely functional to allow minimum upkeep with maximum efficiency during periods of extended cruising.

The main salon has a sturdy fixed table, flanked by settees on the port and starboard sides. A double berth is created when the back of the port settee is swung upward.

An optional arrangement allows for a full u-shaped dinette that converts to a large double berth on the starboard side, allowing for stowage cabinets underneath. A second option replaces the navigator's station starboard aft, via a door, into an aft stateroom with a double berth. These changes do not alter the external profile.

The forward cabin, separated from the main cabin by a teak door, has a large double berth, dresser, mirror, drawers and a large hanging locker. All settees/berths feature 4-inch polyurethane foam cushions covered in a wide choice of decorator fabrics carefully chosen for complete harmony with the warm Burmese teak cabinetry and trim.

The forward head is accessible from either the owner's stateroom or from the main salon, ensuring privacy.

It contains standup shower, stainless steel sink, marine toilet, mirror and stowage locker. Both sink and shower have individual manual pumps for reliability and minimal water usage.

The large L-shaped galley is a model of efficiency. The gimballed LPG three burner range and oven have safety switches to turn off the fuel at the tank when they are not in use. The tank is located in a sealed deck compartment which has its own overhead drain.

There are two iceboxes, one large, one small, each insulated with four inches of poured-in-place polyurethane foam. A trash bin with cutting board top provides extra counter-work area while large storage lockers and drawers give the space needed for provisioning an ocean crossing.

A navigation area opposite the galley features a chart table with an electronics console and large under-seat stowage. The chart table settee converts to a quarter berth.

Easy walk-in access to the engine room is provided through swing-up companionway steps. The room is insulated with fire-retardant foam and contains a work bench, tool box for servicing, ample light, and U.S.C.G. approved ventilation ducts and blower.

# DownEaster 38 Equipment

## STANDARD EQUIPMENT

Farymann diesel w/electric and hand-crank start

BHP...32 at 2,500 rpm

torque...68 ft. lbs. at 2,000 rpm

transmission reduction ratio...2.0:1

### Exterior

pedestal steering w/28"

traditional wood wheel and

5" compass with brass binnacle

aluminum masts and booms

all mast hardware is stainless steel

masthead integrally welded

w/aluminum sheaves

w/press-fitted bronze

bearings on oversize s.s. shafts

select spar-grade spruce spreaders

2 coats white polyurethane

finish on masts and booms

forged or cast bronze deck and standing hardware

s.s. wire rope w/swaged eyes to military specs.

adjustable topping lifts on all booms

s.s. vinyl covered life lines

10" bronze mooring cleats

4 bronze hawse holes

heavy wall, s.s. nickel plated bow pulpit and stanchions

U.S.C.G. required navigational lights

18 gal./min. manual diaphragm bilge pump w/lever in cockpit

silica-sand non-skid decks

2 coats vinyl anti-fouling bottom paint

exterior trim and cap rails are teak

### Instrumentation

tachometer

oil pressure gauge

water temperature gauge

ammeter

fuel tank gauge

battery condition voltmeter

### Interior

cabinetry, cabin trim handjoined Burmese teak

s.s. sinks throughout

3-burner LPG gimbaled stove and oven

3 gal. LPG tank

mirrors in forward cabin and head

teak cabin bulkheads

12v. brass cabin lights w/marine switches

4" polyurethane foam cushions on all berths and settees covered in decorator fabrics

formica counter tops throughout

1 opening port in head

trash bin in galley w/chopping block cover

engine drip pan

two iceboxes; 5 cu. ft. and 3 1/2 cu. ft.

sheet cast aircraft type acrylic port lights

### Mechanical/Electrical

electric blower in engine room

master battery selector switch

bronze sea cocks on thru-hulls below waterline

12v. alternator - 35 amp.

16 x 14 2-blade bronze powering propeller

2 - 12v. 105 amp. hr. batteries

1" s.s. sealloy propeller shaft

engine system alarms

aircraft type circuit breakers



## OPTIONAL EQUIPMENT

- |                                     |                                     |
|-------------------------------------|-------------------------------------|
| 9015 single lifeline with gates     | 9325 hull speed system              |
| 9502 extra ss. 50 gallon water tank | 9326 log/odometer system            |
| 9207 teak & holly plank cabin sole  | 9329 depth sounder system           |
| 9008 cockpit dodger                 | 9327 wind speed system              |
| 9211 interior hand rails            | 9328 wind direction system          |
| 9212 interior oil lamps set         | 9335 standard horizon 25 VHF/FM     |
| 9310 spreader lights                | 9336 Benmar Course Setter           |
| 9311 foredeck light                 | autopilot                           |
| 9312 electric anchor light          | 9503 lightning ground               |
| 9107 staysail halyard winch         | 9607-8-9 S-M-L personalized         |
| 9016 cockpit backrests              | sea bags                            |
| 9005 anchor capstan-mechanical      | 9610-12 sail covers                 |
| 9002 teak dorade box w/vent         | 9108-10 belaying pins and rack      |
| 9003 teak flag staff and holder     | 9114 jiffy reefing for mains'l      |
| 9009 bow anchor-chain and line      | 9613 binnacle/wheel cover w/logo    |
| w/hawse pipe                        | 9401-4 cutter sails                 |
| 9010 stern anchor-chain and line    | 9405-10 ketch sails                 |
| 9305 2 extra batteries              | 9411-18 schooner sails              |
| 9220 extra manual fresh water       | 9105 roller furling gear            |
| sink pump                           | 9419-20-21 roller furling jib C-K-S |
| 9204 manual salt water sink pump    |                                     |
| 9017 teak cockpit grating           |                                     |
| 9504 optional boot and shear        |                                     |
| colors                              |                                     |
| 9309 110 v. AC shore power          |                                     |
| system                              |                                     |
| 9007 closed cell cockpit cushions   |                                     |
| 9301 emergency tiller               |                                     |
| 9202 hot/cold pressure water        |                                     |
| 9205 mechanical refrigerator        |                                     |
| 9226 U.S.C.G. holding tank system   |                                     |
| 9216 additional LPG tank            |                                     |
| 9221 dinette option                 |                                     |
| 9214 cabin heater w/s.s. alcove     |                                     |
| 9217 cutting board stove cover      |                                     |
| 9303 steering brake on pedestal     |                                     |
| 9308 electric bilge pump            |                                     |



**Down East**  
**Yachts Inc.**