

The International Standard

**BARIENT**



<b>MODEL</b>	<b>21-30</b>
<b>2-SPEED</b>	<b>21-33</b>
<b>SELF</b>	
<b>TAILING</b>	<b>22-35</b>
<b>WINCH</b>	<b>22-39</b>
	<b>24-41</b>
	<b>24-45</b>

MANUFACTURED AFTER JULY 1, 1989

## MAINTENANCE & SERVICE INFORMATION

### MOUNTING INSTRUCTIONS

1. Using Dismantling Handle and 1/4" Allen Key, remove the retaining Capscrew and Washer (29;19) from the inside of Mainshaft Drive (12).
2. Lift off the Drum Assy (3;22;23), Line Lifter (25), Line Lifter Key (26), Cover Plate (20) and Mainshaft Drive (12), together from the Gearbox Assy.

**CAUTION:** The Drum Bearings (18) sometimes stick to the inside of the Drum, and may be dropped.

3. Bolt the Base (1) to a flat and smooth surface, drilled to take five countersunk Head Screws. Use the Base (1) as a template. Be sure adequate reinforcement is provided to take the loads produced by the winch. Apply only light coat of Bedding (Sealing) Compound to seal the Base to the Deck (heavy coating could affect the deck flatness and distort the base).

To minimise the friction and loads to the main Drum Bearings, mount the winch so that Drum Drive Pinion (6) is as near as possible to where the Line (Rope) first makes contact with the Drum (see Fig 1).

4. To assemble winch, reverse dismantling procedure.

Fit the Line Lifter (25), with Line Lifter Key (26) inserted in suitable sheeting position, into the slot of Gearbox Plastic Extension (4) (9 positions).

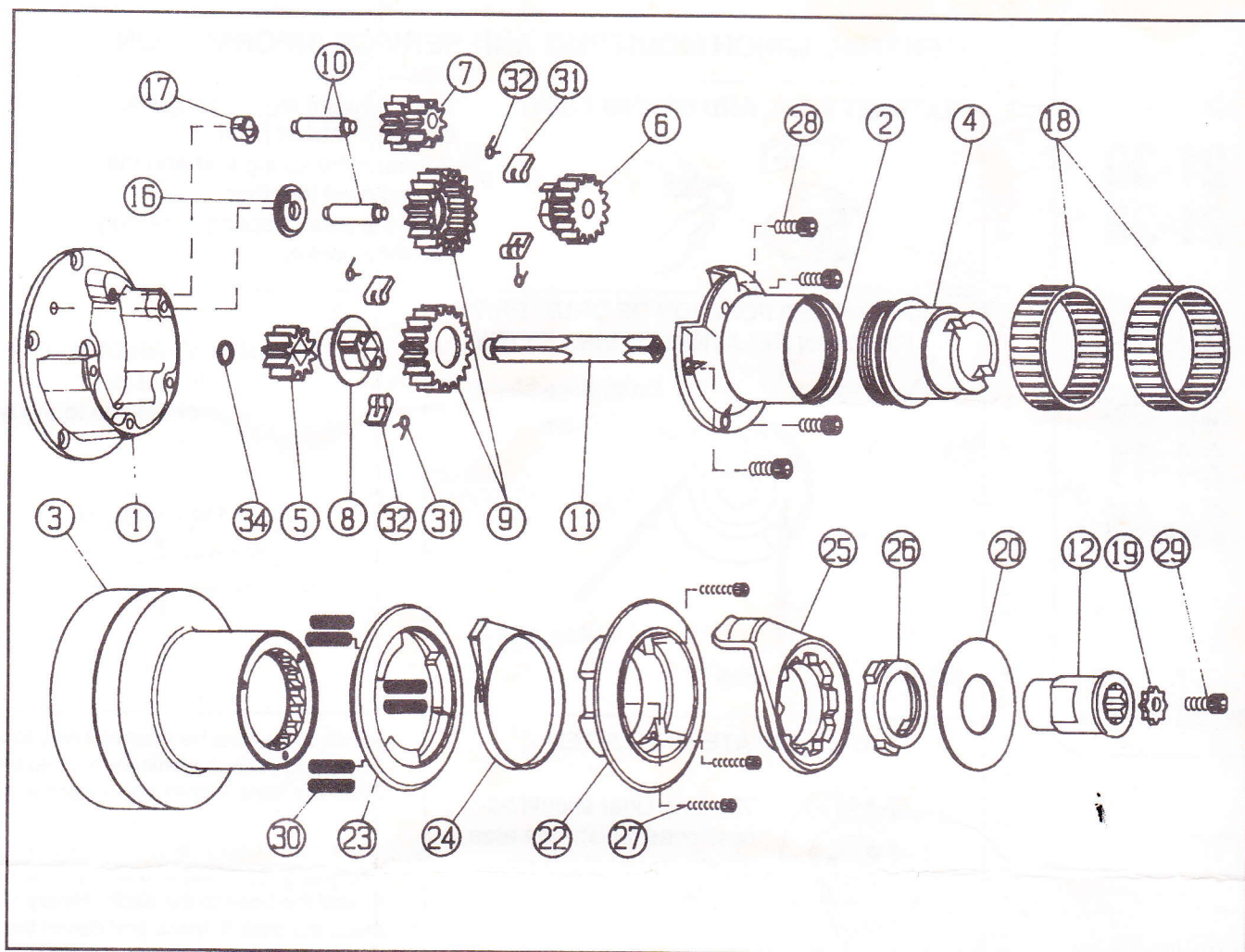
Additional 9 positions can be obtained by rotating the Key (26) 180 degrees in slots of Gearbox Extension (4).

Re-install Cover Plate (20), Mainshaft Drive (12), Retaining Washer (19) and Retaining Screw (29).



5 MOUNTING HOLES  
EQUALLY SPACED

WINCH	SCREW SIZE	PCD
21-30/33	1/4" (6mm)	4 9/16" (117mm)
22-35/39	5/16" (8mm)	4 7/8" (124mm)
24-41/45	5/16" (8mm)	5 1/4" (133mm)



Item	21-30	21-33	22-35 Part Number	22-39	24-41	24-45	Description	Qty
1	300101	300101	400101	400101	450101	450101	Base	1
2	300201	300201	400201	400201	450201	450201	Gearbox	1
3	300401A	300401A	400401A	400401A	450401A	450401A	Drum, Alum	1
Alt	300401C	300401C	400401C	400401C	450401C	450401C	Drum, Chrome	1
Alt	300401B	300401B	400401B	400401B	450401B	450401B	Drum, Bronze	1
4	301102M	301102M	301102M	301102M	301102M	301102M	S-T, G'Box Extension	1
5	300701	330701	300701	330701	300701	330701	Centre Gear	1
6	450702	450702	450702	450702	450702	450702	Drive Pimon 15T	1
7	300703	300703	300703	300703	300703	300703	Idler Pinion	1
8	300901	300901	300901	300901	300901	300901	C'Rat Drive	1
9	300704	300704	400704	400704	450704	450704	Ratchet Gear	2
10	300B01	300B01	300B01	300B01	300B01	300B01	Gear Spindle	2
11	300502	300502	400502	400502	450502	450502	Main Shaft	1
12	300601	300601	300601	300601	300601	300601	Main Shaft Drive	1
16	301801M	301801M	301801M	301801M	301801M	301801M	Drive Pinion Washer	1
18	301901	301901	301901	301901	301901	301901	Drum Bearing	2
19	301803M	301803M	301803M	301803M	30180M	30180M	Retaining Washer	1
20	301001	331001	351001	391001	411001	451001	Cover Plate	1
22	301301M	301301M	401301M	401301M	401301M	401301M	Top Jaw - Plastic	1
Alt	301301C	301301C	401301C	401301C	401301C	401301C	TopJaw Metal	1
23	301401M	301401M	401401M	401401M	451401M	451401M	Bottom Jaw - Plastic	1
Alt	301401C	301401C	401401C	401401C	451401C	451401C	Bottom Jaw - Metal	1
24	301501M	301501M	401501M	401501M	401501M	401501M	Line Stripper	1
25	301601C	301601C	401601C	401601C	401601C	401601C	Line Lifter	1
26	302501M	302501M	302501M	302501M	302501M	302501M	Line Lifter Key	1
27	01-268	01-268	01 268	01 268	01 268	01-268	Cap Screw 10 24 x 3/4"	3
28	01-231	01-231	01 231	01 231	01 251	01-251	Cap Screw 5/16" x 3/4"	1
29	01 215	01 215	01 215	01-215	01-215	01-215	Cap Screw 5/16" x 5/8"	1
30	01 330	01-330	01 330	01-330	01-330	01 330	Jaw Spring	6
31	01 400	01-400	01-400	01-400	01-400	01-400	Ratchet Pawl	4
32	01-300	01-300	01-300	01-300	01-300	01-300	Ratchet Spring	4
34	01045- 50	01045-50-	01045-50	01045-50	01045-50	01045-50	Snap Ring	1