

# Instructions for Parts Books

The heading at the top of the page will be the same for the picture of the parts at it is for the page with the part numbers.

Definition of column headings on part number pages:

**REF.No** → The number referring to the part on the picture page of the parts book.

**Part No.** → The number assigned to this part at the time of printing the parts book.

**Description** → Discription of part.

**Q'ty** → Quantity of part used on that page.

**S.No.** → Serial number range of the equipment that this part will fit.

>= Your serial number should be greater than or equal to the number shown.

<= Your serial number should be lesser than or equal to the serial number shown.

**I/C** → Interchangeability of part shown.

↔ The part shown will work for the older and later serial number.

# The part shown is not interchangeable with the other serial number.

← new for old

→ old for new

**Remarks** → Notes about this particulart part. Sometimes this may say except [FR] or [CA]

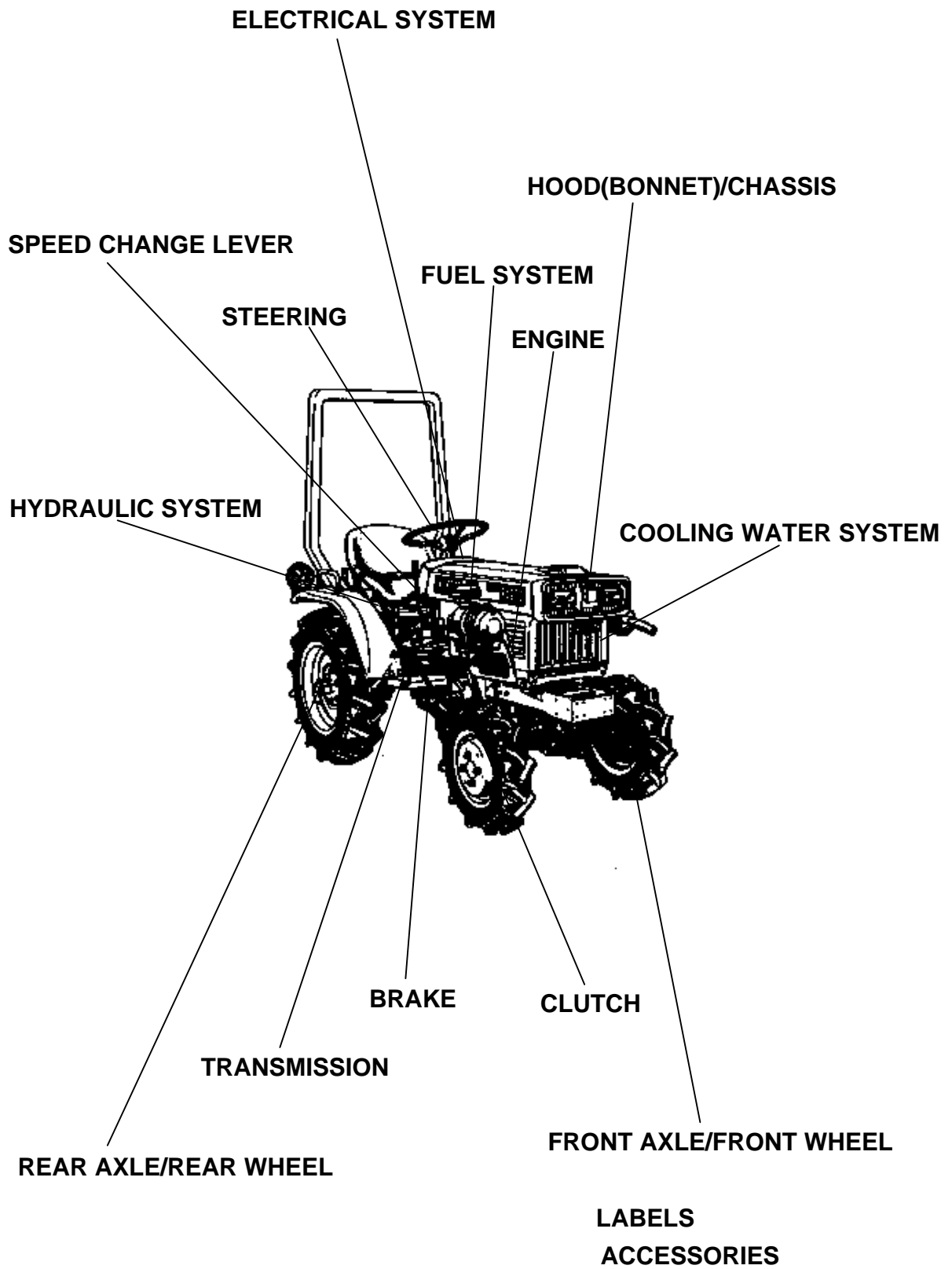
## Note about Country Codes:

The parts books we use in the United States of America may also contain information about a part that would be different in another country. It is important that you are aware of the country codes in some instances.

Symbol	Country
A	United States of America
CA	Canada
FR	France
GR	Greece
PO	Portugal
AU	Australia

If the remarks column says for example EXCEPT [FR] this part works in all countries except France. That means it will work here in the USA.

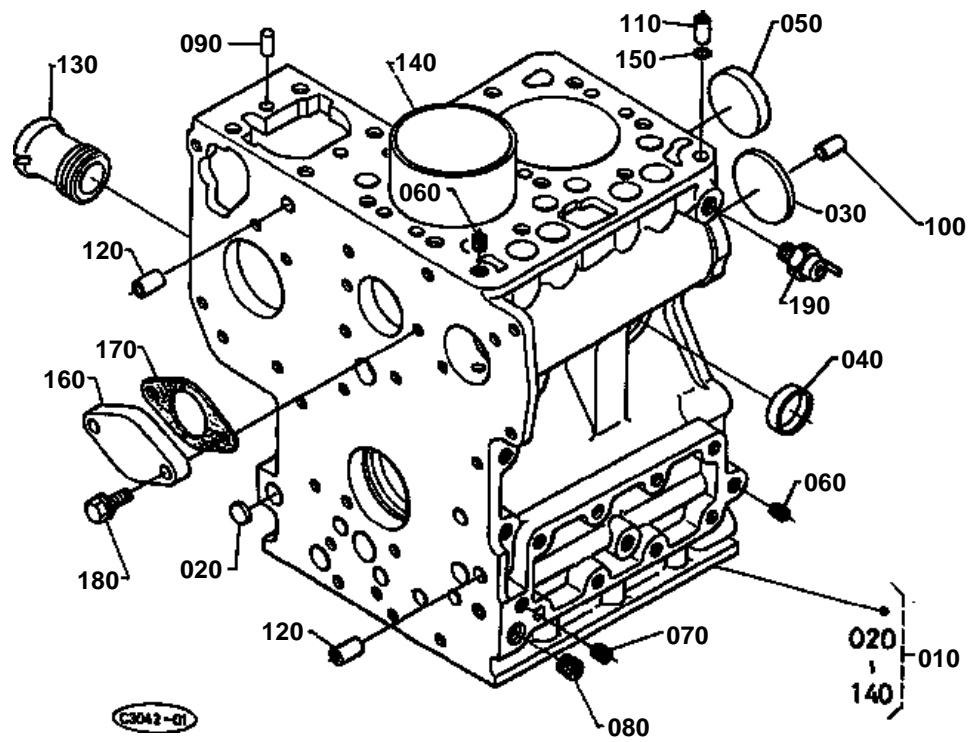
ALL PRODUCT INDEX  
B4200D



Item	Part No.	Description	Book
ENGINE	01T001	CRANKCASE	100K0315
	01T002	OIL PAN	100K0315
	01T003	PISTON/CRANKSHAFT	100K0315
	01T004	MAIN BEARING CASE	100K0315
	01T005	FLYWHEEL	100K0315
	01T006	CYLINDER HEAD	100K0315
	01T007	VALVE/ROCKER ARM	100K0315
	01T008	NOZZLE HOLDER [A] [CA] [FR] [AU]	100K0315
	01T010	NOZZLE HOLDER (COMPONENT PARTS)	100K0315
	01T011	CYLINDER HEAD COVER	100K0315
	01T012	INLET MANIFOLD	100K0315
	01T014	EXHAUST MANIFOLD	100K0315
	01T016	CAMSHAFT	100K0315
	01T017	GEAR CASE	100K0315
	01T018	HYDRAULIC GEAR PUMP	100K0315
	01T019	HYDRAULIC GEAR PUMP (COMPONENT PARTS)	100K0315
	01T020	FUEL PUMP	100K0315
	01T021	INJECTION PUMP	100K0315
	01T022	INJECTION PUMP (COMPONENT PARTS)	100K0315
	01T023	SPEED CONTROL PLATE	100K0315
	01T024	GOVERNOR	100K0315
ELECTRICAL SYSTEM	01T029	DYNAMO/FAN [A] [CA] [FR] [AU] [WG]	100K0315
	01T030	DYNAMO (COMPONENT PARTS) [A] [CA] [FR] [AU] [WG]	100K0315
CLUTCH	01T048	CLUTCH	100K0315
LABELS	01T096	LABEL	100K0315
ENGINE	01T013	AIR CLEANER	100K0315
	01T015	MUFFLER	100K0315
	01T025	ACCELERATOR	100K0315
FUEL SYSTEM	01T026	FUEL TANK	100K0315
	01T027	FUEL FILTER	100K0315
COOLING WATER SYSTEM	01T028	RADIATOR	100K0315
ELECTRICAL SYSTEM	01T035	STARTER	100K0315
	01T036	STARTER (COMPONENT PARTS)	100K0315
	01T037	BATTERY	100K0315
	01T038	PANEL WIRING [A] [CA]	100K0315
	01T041	LIGHT/HORN [A] [CA] [U]	100K0315
	01T047	SWITCH	100K0315
	01T049	CLUTCH PEDAL/PROPELLER SHAFT	100K0315
CLUTCH	01T050	CLUTCH HOUSING	100K0315
	01T051	TRANSMISSION CASE	100K0315
TRANSMISSION	01T052	CASE COVER	100K0315
	01T053	1ST SHAFT 4TH SHAFT	100K0315
	01T054	2ND SHAFT REVERSE SHAFT	100K0315
	01T055	3RD SHAFT 5TH SHAFT PTO SHAFT [A] [CA] [U]	100K0315
	01T057	MID P.T.O.	100K0315
	01T058	MAIN GEAR SHIFT LEVER	100K0315
	01T059	HI-LO GEAR SHIFT LEVER	100K0315
SPEED CHANGE LEVER	01T060	DIFFERENTIAL REAR	100K0315
	01T061	AXLE CASE	100K0315
	01T062	REAR WHEEL (7-16)	100K0315
REAR AXLE/REAR WHEEL	01T063	REAR WHEEL (212/80D-15) [A] [CA]	100K0315
	01T065	BRAKE	100K0315
	01T066	BRAKE PEDAL [A] [CA] [FR] [U] [AU]	100K0315
BRAKE	01T069	DRIVE SHAFT	100K0315
FRONT AXLE/FRONT WHEEL	01T070	FRONT AXLE CASE	100K0315
	01T071	FRONT WHEEL GEAR CASE	100K0315
	01T072	DIFFERENTIAL FRONT	100K0315
	01T073	FRONT AXLE JOINT	100K0315
	01T074	FRONT WHEEL DRIVE LEVER	100K0315
	01T075	FRONT WHEEL (4.50-10)	100K0315

Item	Part No.	Description	Book
FRONT AXLE/FRONT WHEEL	01T076	FRONT WHEEL (20 X 8.00-10)	100K0315
	01T077	FRONT AXLE FRAME [A] [CA] [FR] [U] [AU]	100K0315
STEERING	01T079	KNUCKLE ARM	100K0315
	01T080	STEERING	100K0315
HYDRAULIC SYSTEM	01T081	HYDRAULIC PIPE [A] [CA] [FR] [U] [AU]	100K0315
	01T083	CONTROL VALVE (COMPONENT PARTS)	100K0315
	01T084	HYDRAULIC LIFT ARM	100K0315
	01T085	HYDRAULIC CYLINDER CAP	100K0315
	01T086	3-POINT LINKAGE [A] [CA] [FR] [U] [AU]	100K0315
HOOD(BONNET)/CHASSIS	01T088	HOOD(BONNET) [A] [CA] [U]	100K0315
	01T090	REARVIEW MIRROR (OPTION) [A] [CA] [U]	100K0315
	01T091	FENDER [A] [CA] [FR] [U] [AU]	100K0315
	01T093	SEAT [A] [CA] [FR] [U] [AU]	100K0315
	01T095	STEP/FOOT COVER	100K0315
LABELS	01T097	LABEL	100K0315
ACCESSORIES	01T098	ACCESSORIES	100K0315

## CRANKCASE

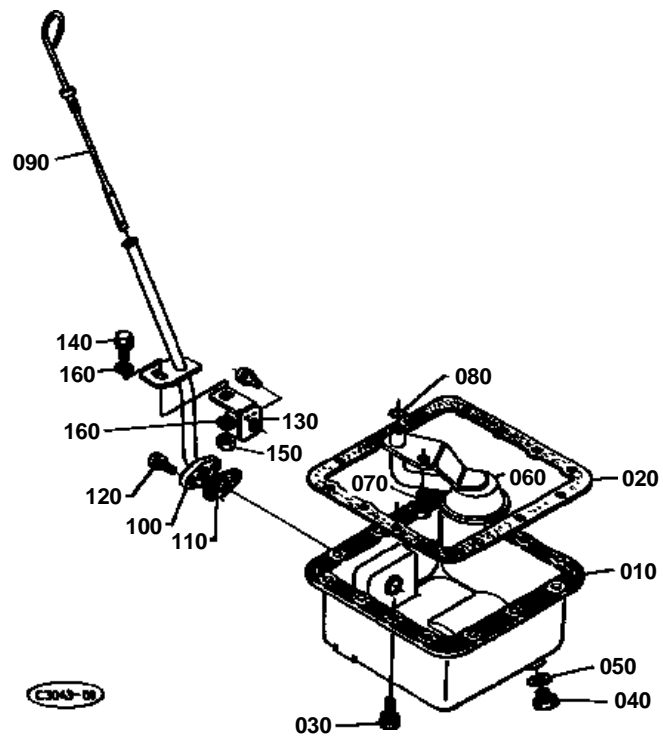




## CRANKCASE

↔ Interchangeable; ≠ not interchangeable; ← new for old; → old for new

REF.No	Part No.	Description	Q'ty	S.No.	I/C	REMARKS	Weight (kgf)	Weight (lb)
	15951-01010							
	15261-96170						0.005	
	15261-96160						0.02	
	15321-96260						0.014	
	15221-03490						0.02	
	15261-96010						0.002	
	15521-96020						0.003	
	15521-96030						0.007	
	05012-00609						0.003	
	05012-00814						0.006	
	15221-33650						0.004	
	15231-33960						0.001	
	15261-72880						0.07	
	15901-02310						0.398	
	15221-33700						0.001	
	15261-73910						0.13	
	15261-73920							
	01023-50618						0.006	
	15531-39010						0.032	

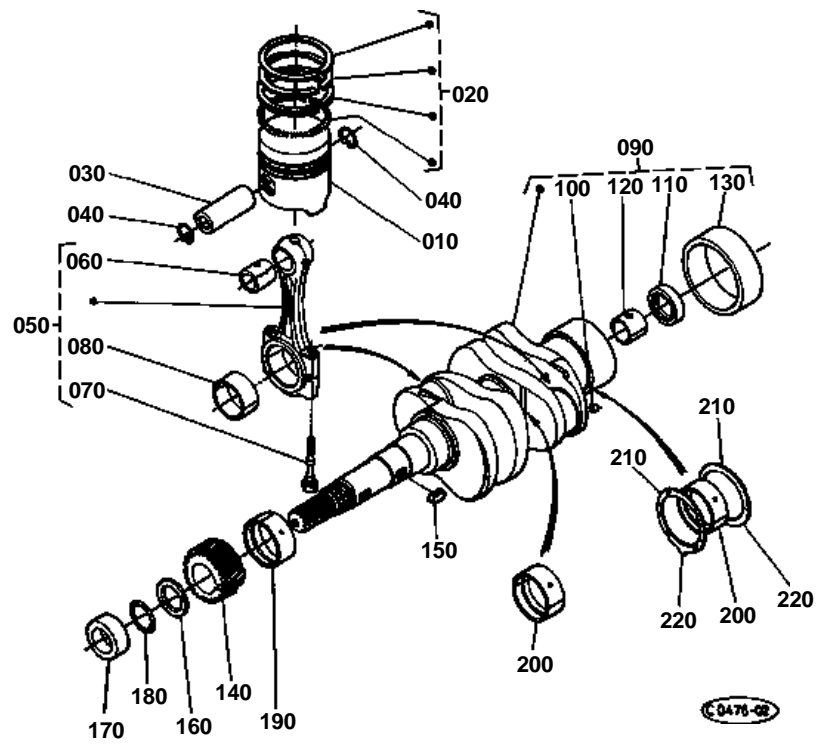




## OIL PAN

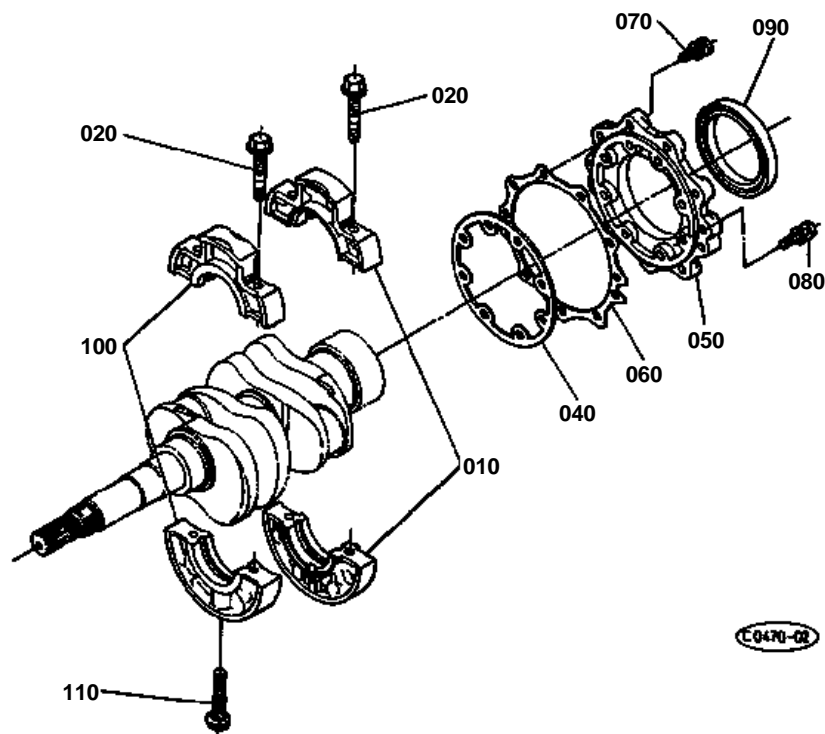
↔ Interchangeable; ≠ not interchangeable; ← new for old; → old for new

REF.No	Part No.	Description	Q'ty	S.No.	I/C	REMARKS	Weight (kgf)	Weight (lb)
010	15262-01610	OIL PAN	1				1.12	2.464
020	15261-01620	GASKET OIL PAN	1				0	0
030	15381-91092	BOLT	14				0.002	0.0044
040	15221-33750	PLUG	1				0.032	0.0704
050	15109-33660	GASKET	1				0.001	0.0022
060	15262-32110	FILTER OIL	1				0.15	0.33
070	01123-50816	BOLT	1				0.011	0.0242
080	04811-00140	RING	1				0.001	0.0022
090	15261-36410	GAUGE OIL	1				0.031	0.0682
100	15262-36420	GUIDE OIL GAUGE	1				0.175	0.385
110	15261-36430	GASKET OIL GAUGE	1				0	0
120	01023-50618	BOLT	2				0.006	0.0132
130	15262-36440	SUPPORT OIL GAUGE	1				0.036	0.0792
140	01153-50820	BOLT	1				0.012	0.0264
150	02114-50080	NUT	1				0.005	0.011
160	04013-50080	WASHER PLAIN	2				0	0

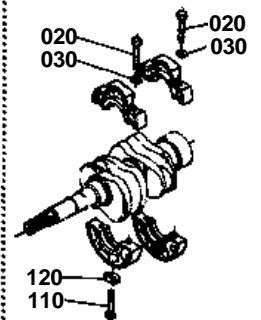


↔ Interchangeable; ≠ not interchangeable; ← new for old; → old for new

REF.No	Part No.	Description	Q'ty	S.No.	I/C	REMARKS	Weight (kgf)	Weight (lb)
010	15956-21110	PISTON	2			STD	0.32	0.704
010	15956-21910	PISTON	2			+0.5MM	0.33	0.726
020	15901-21050	ASSY PISTON RING	2			STD	0.03	0.066
020	15901-21090	ASSY PISTON RING	2			+0.5MM	0.033	0.0726
030	15261-21310	PIN PISTON	2				0.102	0.2244
040	15261-21330	CIR-CLIP PISTON PIN	4				0.001	0.0022
050	15531-22010	ASSY CONNECTING ROD	2	≤599855			0	0
050	15381-22010	ASSY CONNECTION ROD	2	≥599856	≠		0	0
050	15694-22010	ASSY CONNECTION ROD	2	≥751430	↔		0.5	1.1
060	15261-21980	BUSH PISTON PIN	2				0.012	0.0264
070	15261-22140	BOLT CONNECTING ROD	4	≤599855			0	0
070	15381-22140	BOLT CONNECTING ROD	4	≥599856	≠		0.02	0.044
080	15531-22310	METAL CRANKPIN	2	≤751429		SET.STD	0	0
080	15694-22310	METAL CRANKPIN	2	≥751430	↔	SET.STD	0.02	0.044
080	15531-22970	METAL CRANKPIN	2	≤751429		SET.-0.2MM	0	0
080	15694-22970	METAL CRANKPIN	2	≥751430	↔	SET.-0.2MM	0.025	0.055
080	15531-22980	METAL CRANKPIN	2	≤751429		SET.-0.4MM	0	0
080	15694-22980	METAL CRANKPIN	2	≥751430	↔	SET.-0.4MM	0.02	0.044
090	15263-23010	COMP.CRANKSHAFT	1	≤599855			0	0
090	15263-23012	COMP.CRANKSHAFT	1	≥599856	≠		6.84	15.048
100	15131-01380	PLUG PIN	2				0.001	0.0022
110	09400-14247	SEAL OIL	1				0.004	0.0088
120	66621-14120	BEARING DRY	1				0.006	0.0132
130	19215-23280	SLEEVE CRANKSHAFT	1				0.05	0.11
140	15261-24110	GEAR CRANKSHAFT	1				0.164	0.3608
150	05712-00515	KEY FEATHER	1				0.003	0.0066
160	15261-23310	SLINGER OIL	1				0.008	0.0176
170	15532-23250	COLLAR CRANKSHAFT	1				0.029	0.0638
180	04811-10220	RING	1				0.001	0.0022
190	15261-23470	METAL CRANKSHAFT	1	≤751429		STD	0	0
190	15694-23470	METAL CRANKSHAFT	1	≥751430	↔	STD	0.035	0.077
190	15261-23910	METAL CRANKSHAFT	1	≤751429		-0.2MM	0	0
190	15694-23910	METAL CRANKSHAFT	1	≥751430	↔	-0.2MM	0.04	0.088
190	15261-23920	METAL CRANKSHAFT	1	≤751429		-0.4MM	0	0
190	15694-23920	METAL CRANKSHAFT	1	≥751430	↔	-0.4MM	0.045	0.099
200	15261-23480	METAL CRANKSHAFT	2	≤751429		SET.STD	0	0
200	15694-23480	METAL CRANKSHAFT	2	≥751430	↔	SET.STD	0.04	0.088
200	15261-23930	METAL CRANKSHAFT	2	≤751429		SET.-0.2MM	0	0
200	15694-23930	METAL CRANKSHAFT	2	≥751430	↔	SET.-0.2MM	0.05	0.11
200	15261-23940	METAL CRANKSHAFT	2	≤751429		SET.-0.4MM	0	0
200	15694-23940	METAL CRANKSHAFT	2	≥751430	↔	SET.-0.4MM	0.046	0.1012
210	15261-23530	METAL SIDE	2			STD	0.006	0.0132
210	15261-23950	METAL SIDE	2			+0.2MM	0.006	0.0132
210	15261-23960	METAL SIDE	2			+0.4MM	0.007	0.0154
220	15261-23540	METAL SIDE	2			STD	0.007	0.0154
220	15261-23970	METAL SIDE	2			+0.2MM	0.006	0.0132
220	15261-23980	METAL SIDE	2			+0.4MM	0.007	0.0154



020 15261-0454-0  
 030 15261-0457-0  
 110 15261-0456-0  
 120 15261-0459-0



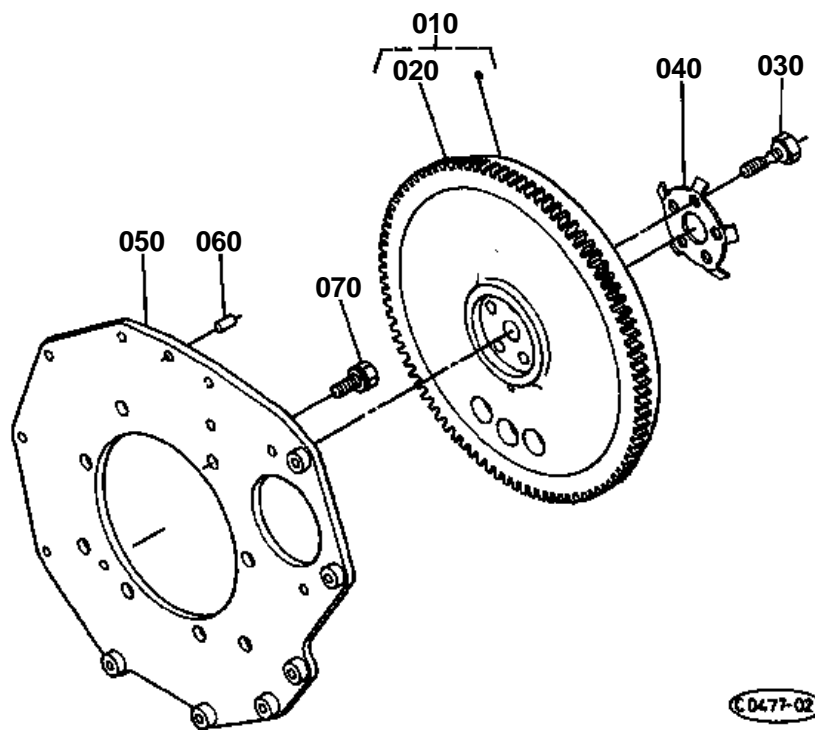
0470-02



## MAIN BEARING CASE

↔ Interchangeable; ≠ not interchangeable; ← new for old; → old for new

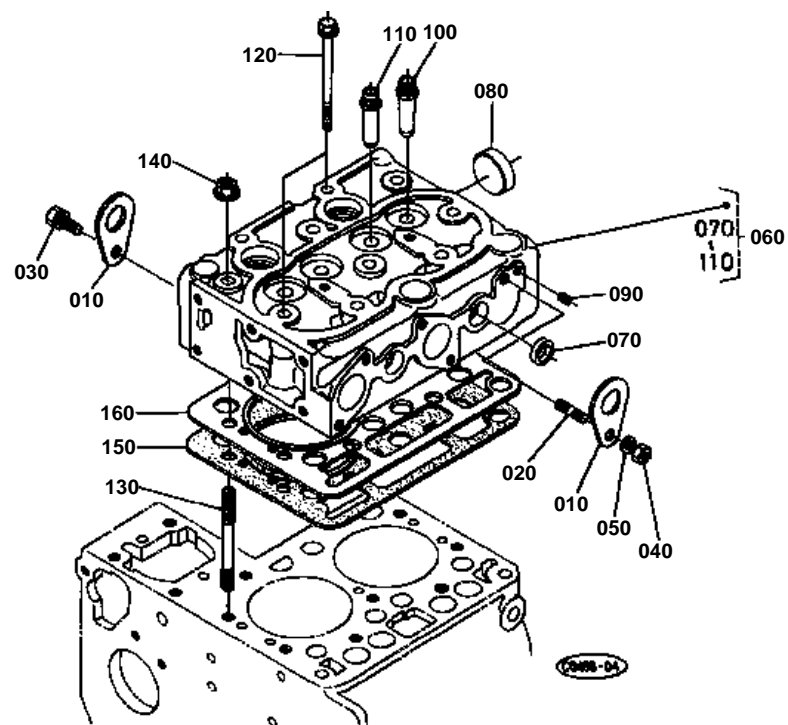
REF.No	Part No.	Description	Q'ty	S.No.	I/C	REMARKS	Weight (kgf)	Weight (lb)
010	15261-04090	ASSY CASE MAIN BRG.	1				0.8	1.76
020	15261-04540	BOLT BEARING CASE	4	≤596387			0.02	0.044
020	15381-04540	BOLT BEARING CASE	4	≥596388	≠		0.02	0.044
030	15261-04570	WASHER BEARING CASE	4	≤596387			0.001	0.0022
040	15261-04360	GASKET BRG.CASE	1				0	0
050	15549-04810	COVER BEARING CASE	1				0.2	0.44
060	15261-04820	GASKET BRG.CASE COV.	1				0	0
070	01023-50620	BOLT	9				0.006	0.0132
080	01023-50625	BOLT	8				0.007	0.0154
090	19215-04460	SEAL OIL	1				0.03	0.066
100	15261-04040	ASSY CASE MAIN BRG.	1				0.687	1.5114
110	15261-04560	BOLT BEARING CASE	1	≤596387			0.02	0.044
110	15381-04560	BOLT BEARING CASE	1	≥596388	≠		0.02	0.044
120	15261-04590	WASHER BEARING CASE	1	≤596387			0.004	0.0088



↔ Interchangeable; ≠ not interchangeable; ← new for old; → old for new

[illegible]

## CYLINDER HEAD

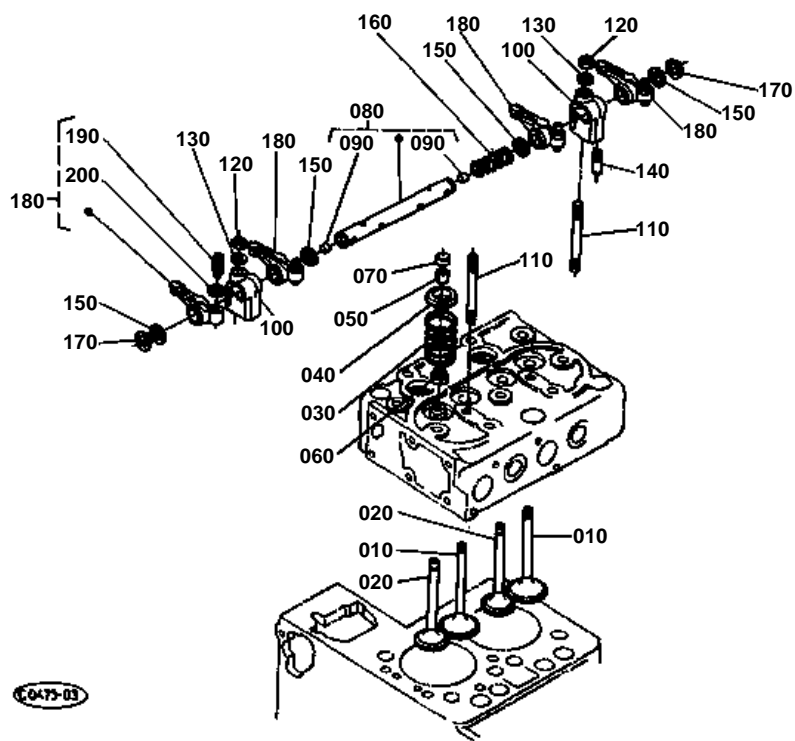




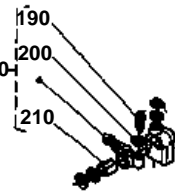
## CYLINDER HEAD

↔ Interchangeable; ≠ not interchangeable; ← new for old; → old for new

REF.No	Part No.	Description	Q'ty	S.No.	I/C	REMARKS	Weight (kgf)	Weight (lb)
010	15221-01750	HOOK ENGINE	2				0.04	0.088
020	01513-50816	STUD	1				0.009	0.0198
030	01123-50816	BOLT	1				0.011	0.0242
040	02156-50080	NUT	1				0.004	0.0088
050	04512-50080	WASHER SPRING	1				0	0
060	15951-03040	COMP.CYLINDER HEAD	1				7.1	15.62
070	15261-03370	CAP SEALING	3				0.005	0.011
080	15321-96260	CAP SEALING	1				0.014	0.0308
090	15261-96010	PLUG	2				0.002	0.0044
100	15261-13540	GUIDE INLET VALVE	2				0.02	0.044
110	15261-13560	GUIDE EXHAUST VALVE	2				0.02	0.044
120	19215-03450	BOLT CYLINDER HEAD	10			[A] [CA] [FR] [AU]	0.047	0.1034
120	19215-03450	BOLT CYLINDER HEAD	9			[U] [WG]	0.047	0.1034
130	15532-03410	STUD CYLINDER HEAD	1			[U] [WG]	0.052	0.1144
140	19215-03512	NUT CYLINDER HEAD	1			[U] [WG]	0.009	0.0198
150	15901-03314	GASKET CYLINDER HEAD	1				0	0
160	15901-03320	SHIM CYL.HEAD GASKET	1				0.025	0.055



180 19264-1403-0  
210 19264-1418-0

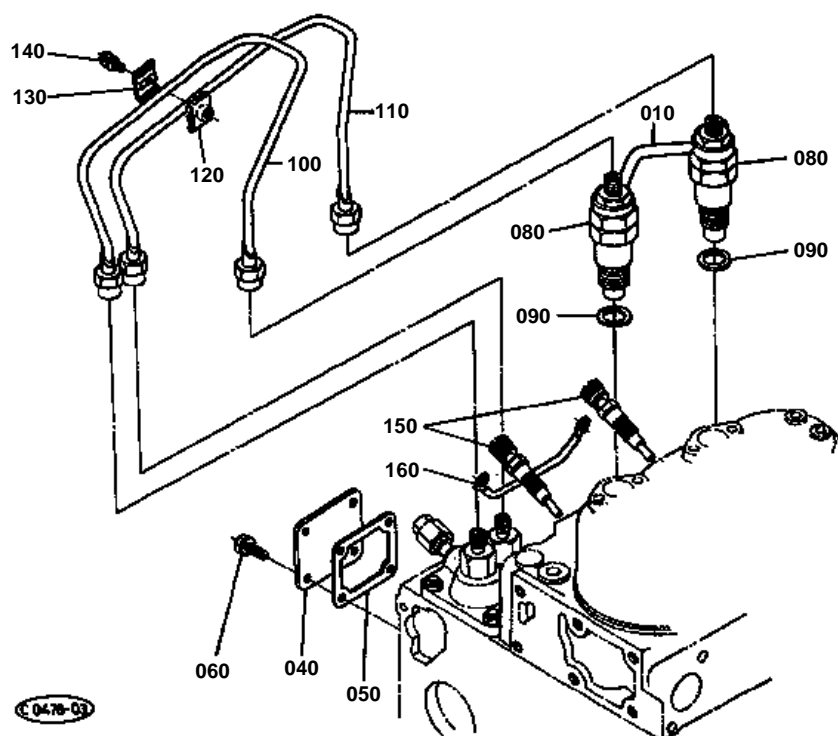




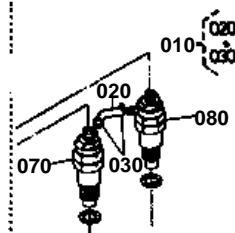
## VALVE/ROCKER ARM

↔ Interchangeable; ≠ not interchangeable; ← new for old; → old for new

REF.No	Part No.	Description	Q'ty	S.No.	I/C	REMARKS	Weight (kgf)	Weight (lb)
010	15393-13110	VALVE INLET	2				0.048	0.1056
020	15393-13120	VALVE EXHAUST	2				0.048	0.1056
030	15261-13240	SPRING VALVE	4				0.02	0.044
040	15261-13330	RETAINER VALVE SP.	4	≤536567			0	0
040	16241-13330	RETAINER VALVE SP.	4	≥536568	↔		0.012	0.0264
050	15261-13360	COLLET VALVE SPRING	4				0.004	0.0088
060	15261-13150	SEAL VALVE STEM	4				0.001	0.0022
070	15261-13280	CAP VALVE	4				0	0
080	15901-14053	ASSY SHAFT R-ARM	1				0.08	0.176
090	15381-93610	SCREW SET	2				0.001	0.0022
100	15381-14350	BRACKET ROCKER ARM	2				0.05	0.11
110	15952-14410	STUD	2				0	0
120	15261-92010	NUT	2				0.005	0.011
130	15261-94010	WASHER PLAIN	2				0.002	0.0044
140	15261-14420	SCREW SET	1				0.002	0.0044
150	15261-14430	WASHER	4				0.001	0.0022
160	15261-14310	SPRING ROCKER ARM	1				0.003	0.0066
170	04612-00110	CIR-CLIP EXTERNAL	2				0.001	0.0022
180	19264-14030	ASSY ROCKER ARM	4	≤581056			0	0
180	15381-14030	ASSY ROCKER ARM	4	≥581057	≠		0.05	0.11
190	15261-14232	SCREW ADJUSTING	4				0.006	0.0132
200	15261-14240	NUT	4				0.002	0.0044
210	19264-14180	BUSH ROCKER ARM	4	≤581056			0.005	0.011



010 15261-4250-0  
 020 15261-4251-0  
 030 14971-4275-0  
 070 15271-5300-0  
 080 15271-5302-0



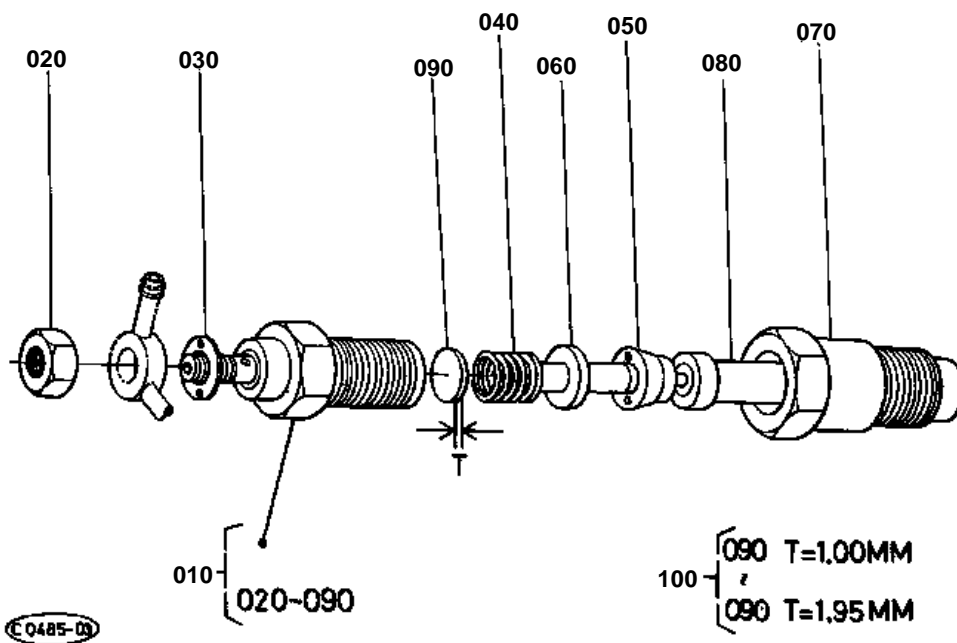


## NOZZLE HOLDER [A] [CA] [FR] [AU]

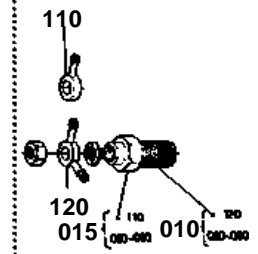
↔ Interchangeable; ≠ not interchangeable; ← new for old; → old for new

REF.No	Part No.	Description	Q'ty	S.No.	I/C	REMARKS	Weight (kgf)	Weight (lb)
010	15261-42500	ASSY PIPE OVER FLOW	1	<=585582			0.02	0.044
010	15262-42502	ASSY PIPE OVER FLOW	1	>=585583	≠		0.04	0.088
020	15261-42510	PIPE FUEL OVER FLOW	1	<=585582			0.004	0.0088
030	14971-42750	CLIP PIPE	2	<=585582			0.001	0.0022
040	15241-51650	COVER INJECTION PUMP	1				0.082	0.1804
050	15231-05130	GASKET BREATHER	1				0	0
060	01023-50614	BOLT	4				0.005	0.011
070	15271-53000	ASSY HOLDER NOZZLE	1	<=585582		REFER TO L.No.0B06-R0 FOR COMPONENTS.	0.26	0.572
080	15271-53020	ASSY HOLDER NOZZLE	1	<=585582		REFER TO L.No.0B06-R0 FOR COMPONENTS.	0.26	0.572
080	15261-53020	ASSY HOLDER NOZZLE	1	>=585583	≠	REFER TO L.No.0B06-R0 FOR COMPONENTS.	0	0
090	17011-53620	GASKET	2				0.003	0.0066
100	15261-53710	PIPE INJECTION	1				0.103	0.2266
110	15261-53720	PIPE INJECTION	1				0.1	0.22
120	15841-53850	CLAMP PIPE	1				0.01	0.022
130	15841-53860	CLAMP PIPE	1				0.009	0.0198
140	03024-50520	SCREW WITH WASHER	1				0.004	0.0088
150	15951-65510	PLUG GLOW	2				0.03	0.066
160	15261-65560	CORD GLOW PLUG	1				0.005	0.011

# NOZZLE HOLDER (COMPONENT PARTS)



010 15271-5302-0  
015 15271-5300-0  
110 15221-9568-0  
120 15221-9569-0

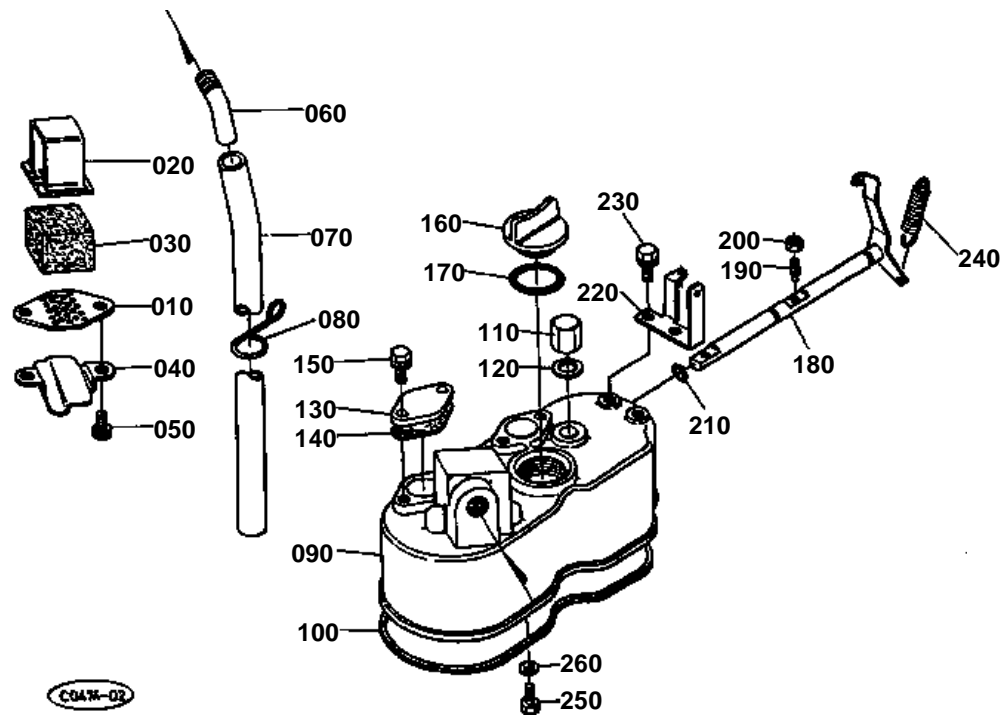




## NOZZLE HOLDER (COMPONENT PARTS)

↔ Interchangeable; ≠ not interchangeable; ← new for old; → old for new

REF.No	Part No.	Description	Q'ty	S.No.	I/C	REMARKS	Weight (kgf)	Weight (lb)
010	15271-53020	ASSY HOLDER NOZZLE	1	≤585582			0.26	0.572
010	15261-53020	ASSY HOLDER NOZZLE	2	≤585583	≠		0	0
015	15271-53000	ASSY HOLDER NOZZLE	1	≤585582			0.26	0.572
020	15221-92020	NUT	2				0.011	0.0242
030	15221-94020	WASHER PLAIN	2				0.002	0.0044
040	15221-53170	SPRING NOZZLE	2				0.01	0.022
050	15221-53350	PIECE DISTANCE	2				0.016	0.0352
060	15221-53160	PUSH ROD	2				0.003	0.0066
070	15221-53280	NUT NOZZLE	2				0.068	0.1496
080	15021-53610	PIECE NOZZLE	2				0	0
090	15221-98110	WASHER ADJUSTING	2			1.00MM	0.001	0.0022
090	15221-98120	WASHER ADJUSTING	2			1.05MM	0.001	0.0022
090	15221-98130	WASHER ADJUSTING	2			1.10MM	0.001	0.0022
090	15221-98140	WASHER ADJUSTING	2			1.15MM	0.001	0.0022
090	15221-98150	WASHER ADJUSTING	2			1.20MM	0.001	0.0022
090	15221-98160	WASHER ADJUSTING	2			1.25MM	0.001	0.0022
090	15221-98170	WASHER ADJUSTING	2			1.30MM	0.001	0.0022
090	15221-98180	WASHER ADJUSTING	2			1.35MM	0.001	0.0022
090	15221-98190	WASHER ADJUSTING	2			1.40MM	0.002	0.0044
090	15221-98200	WASHER ADJUSTING	2			1.45MM	0.001	0.0022
090	15221-98210	WASHER ADJUSTING	2			1.50MM	0.001	0.0022
090	15221-98220	WASHER ADJUSTING	2			1.55MM	0.003	0.0066
090	15221-98230	WASHER ADJUSTING	2			1.60MM	0.003	0.0066
090	15221-98240	WASHER ADJUSTING	2			1.65MM	0.002	0.0044
090	15221-98250	WASHER ADJUSTING	2			1.70MM	0.002	0.0044
090	15221-98260	WASHER ADJUSTING	2			1.75MM	0.002	0.0044
090	15221-98270	WASHER ADJUSTING	2			1.80MM	0.002	0.0044
090	15221-98280	WASHER ADJUSTING	2			1.85MM	0.002	0.0044
090	15221-98290	WASHER ADJUSTING	2			1.90MM	0.002	0.0044
090	15221-98300	WASHER ADJUSTING	2			1.95MM	0.003	0.0066
100	15221-98100	ASSY WASHER	2				0.03	0.066
110	15221-95680	JOINT	1	≤585582			0.021	0.0462
120	15221-95690	JOINT	1	≤585582			0.022	0.0484

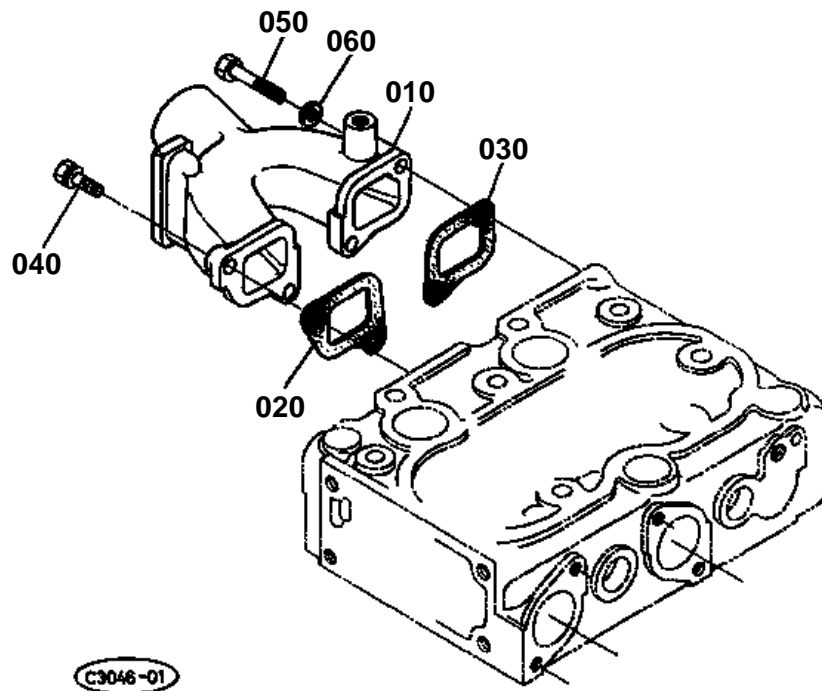




## CYLINDER HEAD COVER

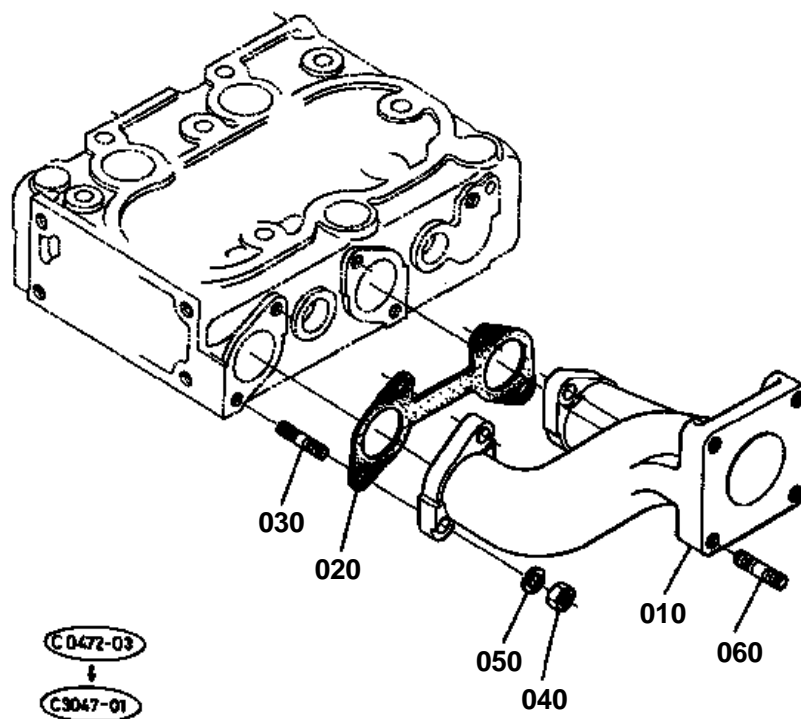
↔ Interchangeable; ≠ not interchangeable; ← new for old; → old for new

REF.No	Part No.	Description	Q'ty	S.No.	I/C	REMARKS	Weight (kgf)	Weight (lb)
010	15951-05140	PLATE ELEMENT	1				0.005	0.011
020	15521-05150	PLATE ELEMENT	1				0.01	0.022
030	15521-05670	ELEMENT BREATHER	1				0.01	0.022
040	15951-05370	OIL SHIELD BREATHER	1				0.005	0.011
050	03024-50510	SCREW WITH WASHER	2				0.002	0.0044
060	15521-05550	JOINT BREATHER PIPE	1				0.04	0.088
070	15261-05510	PIPE BREATHER	1				0.069	0.1518
080	15951-05590	CLAMP PIPE	1				0.003	0.0066
090	15951-14510	COVER CYL.HEAD	1				1.913	4.2086
100	15261-14520	GASKET HEAD COVER	1				0.003	0.0066
110	15951-92330	NUT CAP	2				0	0
120	15951-96660	GASKET	2				0.001	0.0022
130	15261-66630	COVER DECOMP.OPENING	2				0.023	0.0506
140	15261-66640	GASKET DECOMP.OPEN.	2				0	0
150	01023-50614	BOLT	4				0.005	0.011
160	15221-33140	PLUG OIL FILLER	1				0.038	0.0836
170	04811-50300	RING	1				0.001	0.0022
180	15951-66040	COMP.SHAFT DECOMP.	1				0.145	0.319
190	15261-66350	BOLT DECOMPRESS	2				0.002	0.0044
200	02056-50050	NUT	2				0.002	0.0044
210	04811-00080	RING	1				0.001	0.0022
220	15261-66190	HOLDER DECOMP.WIRE	1				0.03	0.066
230	01023-50614	BOLT	2				0.005	0.011
240	15221-66280	SPRING DECOMPRESS	1				0.008	0.0176
250	15221-66410	BOLT	1				0.005	0.011
260	04512-50060	WASHER SPRING	1				0	0

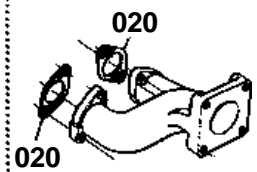


C3046-01

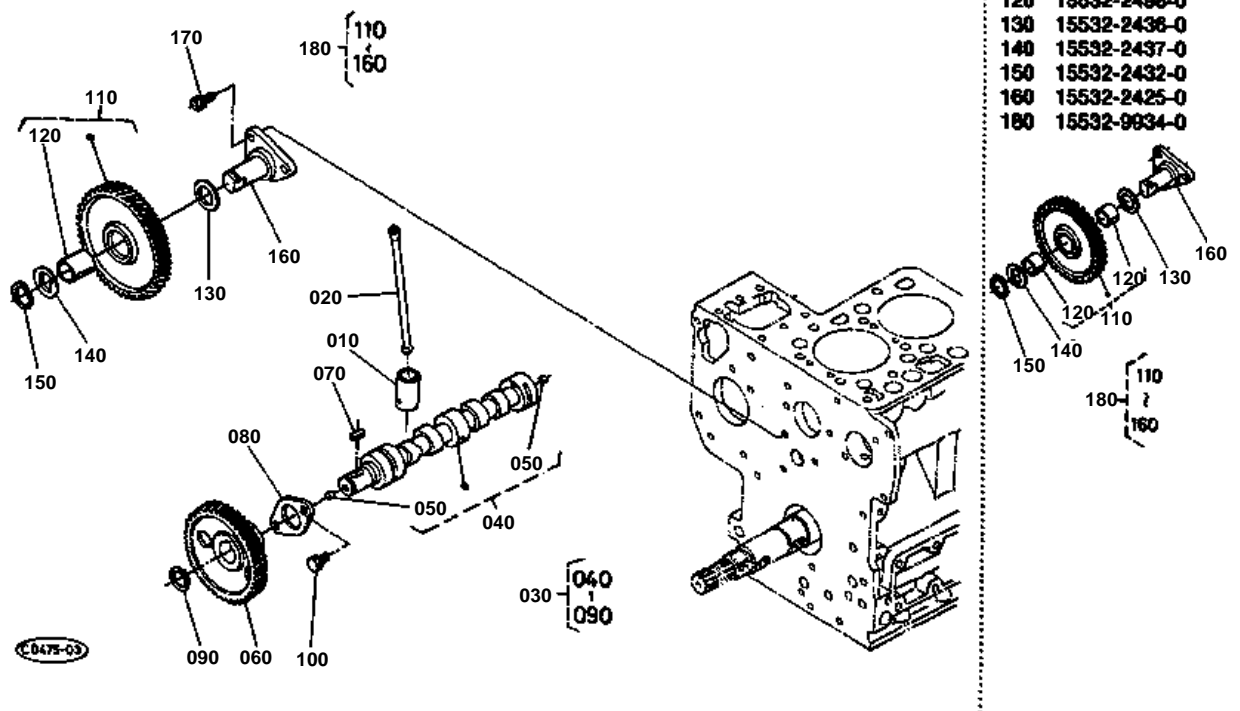




020 15261-1236-0





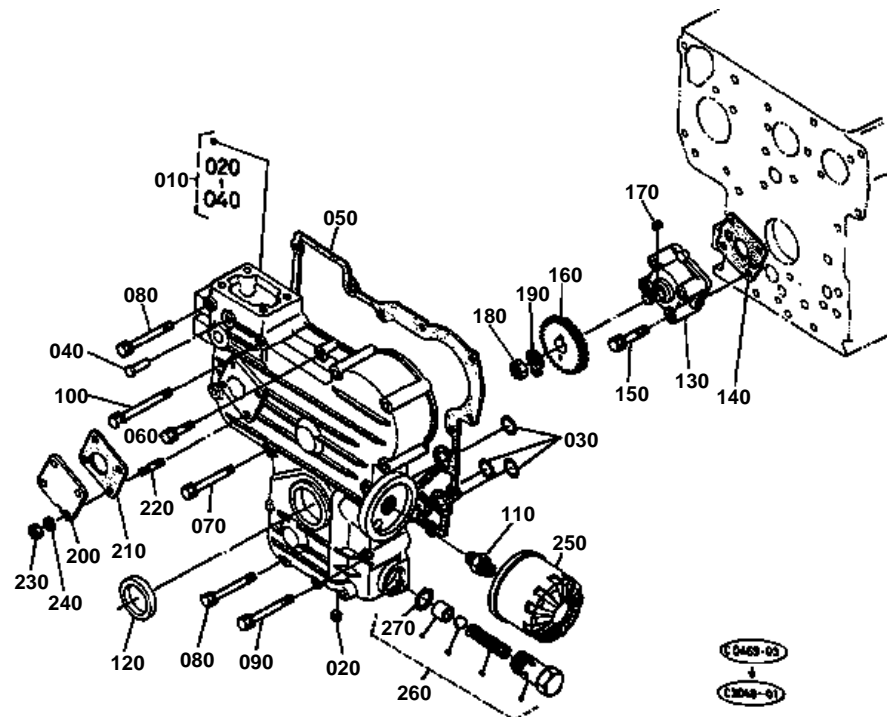




## CAMSHAFT

↔ Interchangeable; ≠ not interchangeable; ← new for old; → old for new

REF.No	Part No.	Description	Q'ty	S.No.	I/C	REMARKS	Weight (kgf)	Weight (lb)
010	15261-15550	TAPPET	4				0.03	0.066
020	15261-15110	PUSH ROD	4				0.022	0.0484
030	15261-16010	ASSY CAMSHAFT	1				1.1	2.42
040	15261-16110	COMP.CAMSHAFT	1				0.225	0.495
050	15261-96880	PLUG BLIND	2				0.002	0.0044
060	15261-16510	GEAR CAMSHAFT	1				0.354	0.7788
070	05712-00515	KEY FEATHER	1				0.003	0.0066
080	15261-16270	STOPPER CAMSHAFT	1				0.034	0.0748
090	04612-00180	CIR-CLIP EXTERNAL	1				0.001	0.0022
100	01023-50614	BOLT	2				0.005	0.011
110	15532-24010	COMP.GEAR IDLE	1	≤599855			0.63	1.386
110	15741-24010	COMP.GEAR IDLE	1	≥599856	≠		0.64	1.408
120	15532-24980	BUSH IDLE GEAR	2	≤599855			0.011	0.0242
120	15741-24980	BUSH IDLE GEAR	1	≥599856	≠		0.03	0.066
130	15532-24360	COLLAR IDLE GEAR	1	≤599855			0.01	0.022
130	15741-24360	COLLAR IDLE GEAR	1	≥599856	≠		0.04	0.088
140	15532-24370	COLLAR IDLE GEAR	1	≤599855			0.01	0.022
140	15741-24370	COLLAR IDLE GEAR	1	≥599856	≠		0.015	0.033
150	15532-24320	CIR-CLIP IDLE GEAR	1	≤599855			0.003	0.0066
150	15741-24320	CIR-CLIP IDLE GEAR	1	≥599856	≠		0.01	0.022
160	15532-24250	SHAFT IDLE GEAR	1	≤599855			0.275	0.605
160	15741-24250	SHAFT IDLE GEAR	1	≥599856	≠		0.35	0.77
170	01023-50616	BOLT	3				0.005	0.011
180	15532-99340	ASSY GEAR IDLE SER/V	1	≤599855			0.9	1.98
180	15741-99340	ASSY GEAR IDLE	1	≥599856	←		1.1	2.42

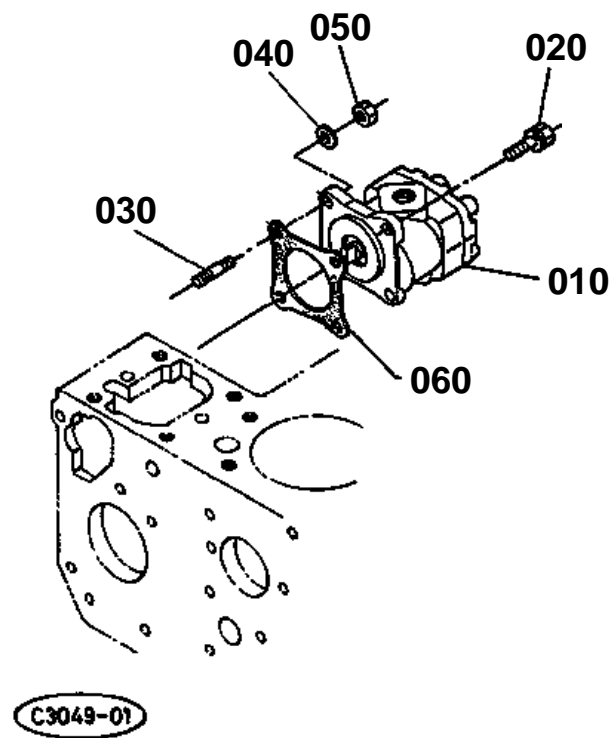




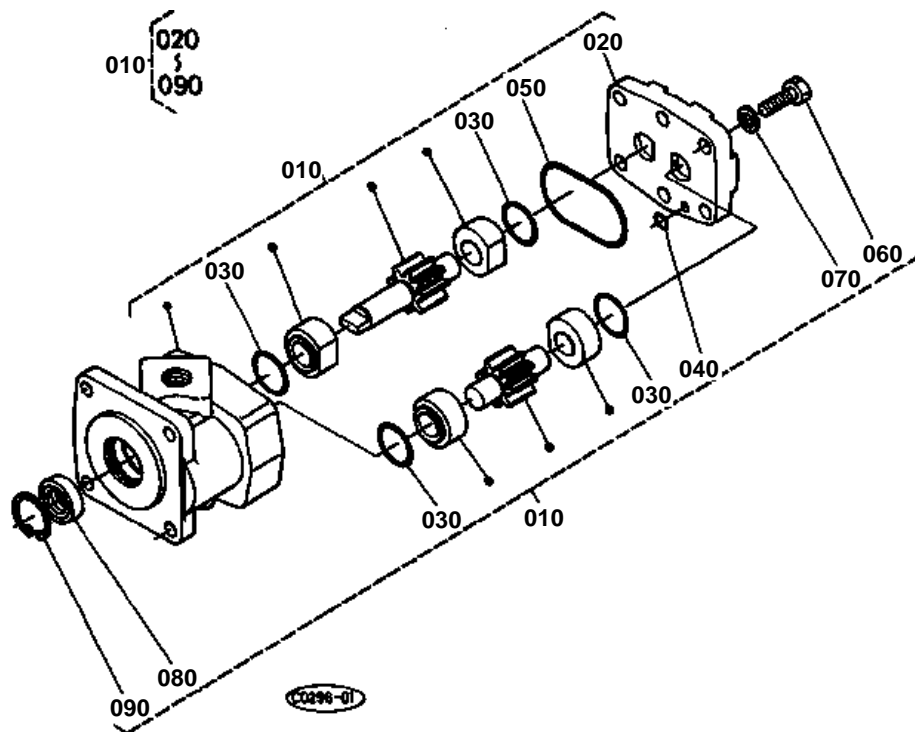
## GEAR CASE

↔ Interchangeable; ≠ not interchangeable; ← new for old; → old for new

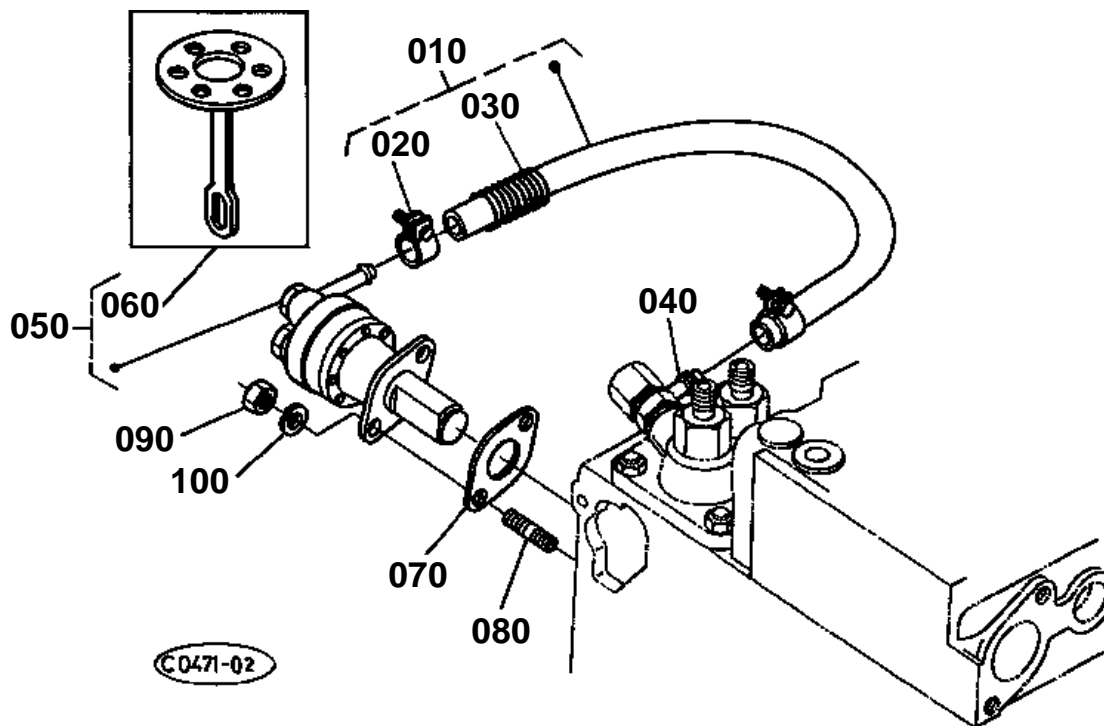
REF.No	Part No.	Description	Q'ty	S.No.	I/C	REMARKS	Weight (kgf)	Weight (lb)
010	15381-04020	COMP.CASE GEAR	1				0	0
020	15261-96020	PLUG	2				0	0
030	04811-06130	RING	3				0.001	0.0022
040	15221-56280	PIN START SPRING	1				0.006	0.0132
050	15261-04132	GASKET GEAR CASE	1				0	0
060	01023-50630	BOLT	1				0.008	0.0176
070	01023-50660	BOLT	3				0.01	0.022
080	01023-50665	BOLT	8				0.015	0.033
090	01023-50670	BOLT	1				0	0
100	01023-50675	BOLT	1				0.01	0.022
110	15241-32290	JOINT PIPE	1				0.053	0.1166
120	09550-00008	SEAL OIL	1				0.01	0.022
130	15261-35010	ASSY PUMP OIL	1				0.32	0.704
140	15261-35150	GASKET OIL PUMP	1				0	0
150	15261-91022	BOLT	4				0.012	0.0264
160	15954-35660	GEAR OIL PUMP DRIVE	1				0.14	0.308
170	05712-00410	KEY FEATHER	1				0.001	0.0022
180	02016-50100	NUT	1				0.009	0.0198
190	04211-50100	WASHER WITH CLAW	1				0.002	0.0044
200	15223-83340	COVER	1				0.152	0.3344
210	15221-88130	GASKET H/METER UNIT	1				0	0
220	15221-88210	STUD	4				0.005	0.011
230	02056-50060	NUT	4				0.002	0.0044
240	04512-50060	WASHER SPRING	4				0	0
250	15241-32090	ASSY CARTRIDGE OIL	1				0.35	0.77
260	15261-36070	ASSY VALVE RELIEF	1				0.078	0.1716
270	04810-00150	RING	1				0.001	0.0022





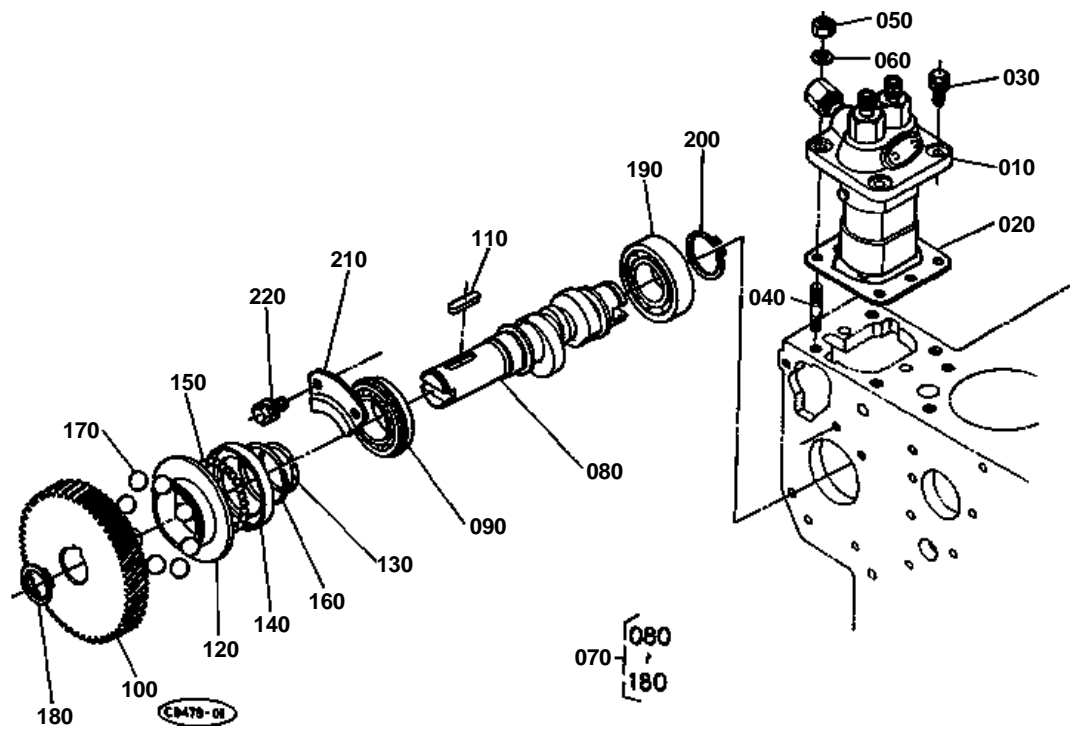






↔ Interchangeable; ≠ not interchangeable; ← new for old; → old for new

REF.No	Part No.	Description	Q'ty	S.No.	I/C	REMARKS	Weight (kgf)	Weight (lb)
010	15263-42010	ASSY PIPE FUEL	1				0.04	0.088
020	14301-42750	CLIP PIPE	2				0.005	0.011
030	66591-54250	SPRING PIPE PROTECT.	1				0.01	0.022
040	14111-42410	JOINT	1				0.025	0.055
050	15381-52030	ASSY PUMP FUEL	1				0	0
060	15381-52040	COMP.DIAPHRAGM	1				0	0
070	15241-52140	GASKET FUEL PUMP	1				0	0
080	01513-50616	STUD	2				0.004	0.0088
090	02056-50060	NUT	2				0.002	0.0044
100	04512-50060	WASHER SPRING	2				0	0

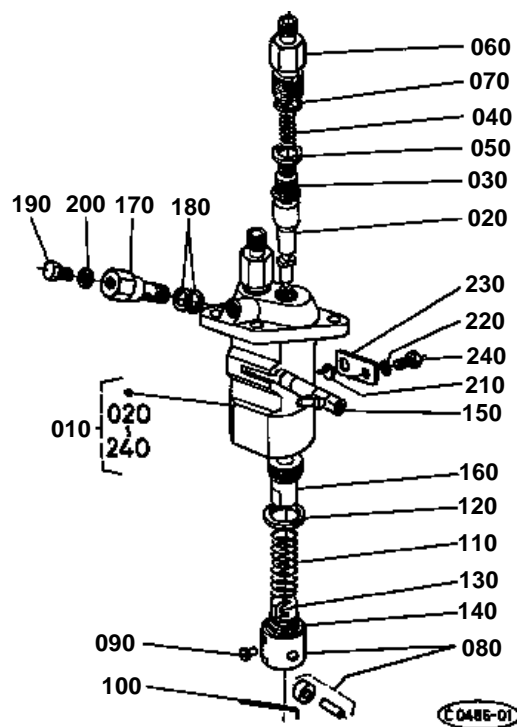




# INJECTION PUMP

↔ Interchangeable; ≠ not interchangeable; ← new for old; → old for new

REF.No	Part No.	Description	Q'ty	S.No.	I/C	REMARKS	Weight (kgf)	Weight (lb)
010	15261-51010	ASSY PUMP INJECTION	1			REFER TO L.No.0B16-L0 FOR COMPONENTS.	1.45	3.19
020	15221-52110	SHIM INJECTION PUMP	1				0.002	0.0044
020	15261-52110	SHIM INJECTION PUMP	2				0.008	0.0176
030	01123-50822	BOLT	2				0.012	0.0264
040	15221-91530	STUD	2				0.011	0.0242
050	02156-50080	NUT	2				0.004	0.0088
060	04512-50080	WASHER SPRING	2				0	0
070	15262-16020	ASSY CAMSHAFT FUEL	1				1.08	2.376
080	15262-16170	CAMSHAFT FUEL	1				0.335	0.737
090	08153-06004	BEARING BALL	1				0.07	0.154
100	15261-51150	GEAR INJECTION PUMP	1				0.463	1.0186
110	05712-00520	KEY FEATHER	1				0.004	0.0088
120	15261-55450	SLEEVE GOVERNOR	1				0.058	0.1276
130	15261-55470	CIR-CLIP GOV.SLEEVE	1				0.002	0.0044
140	15261-55690	CASE GOVERNOR BALL	1				0	0
150	07715-03205	BALL	30				0.001	0.0022
160	15261-55740	CIR-CLIP	1				0.002	0.0044
170	07715-03217	BALL	8				0.01	0.022
180	04612-00180	CIR-CLIP EXTERNAL	1				0.001	0.0022
190	08103-06004	BEARING BALL	1				0.066	0.1452
200	04612-00200	CIR-CLIP EXTERNAL	1				0.001	0.0022
210	15261-16320	STOPPER	1				0.037	0.0814
220	01023-50612	BOLT	2				0.005	0.011





## INJECTION PUMP (COMPONENT PARTS)

↔ Interchangeable; ≠ not interchangeable; ← new for old; → old for new

REF.No	Part No.	Description	Q'ty	S.No.	I/C	REMARKS	Weight (kgf)	Weight (lb)
010	15261-51010	ASSY PUMP INJECTION	1				1.45	3.19
020	15261-51050	PLUNGER PUMP	2				0.04	0.088
030	15261-51030	VALVE DELIVERY	2				0.011	0.0242
040	15331-51230	SPRING DELIV.VALVE	2				0.001	0.0022
050	15331-51240	GASKET DELIV.VALVE	2				0.001	0.0022
060	15331-51220	HOLDER DELIV.VALVE	2				0.053	0.1166
070	15331-96760	O RING	2				0.001	0.0022
080	15331-51070	ASSY TAPPET	2				0.036	0.0792
090	15331-51250	PIN TAPPET GUIDE	2				0.001	0.0022
100	15331-51430	PIN CLAMP	1				0.001	0.0022
110	17331-51280	SPRING PLUNGER	2				0.017	0.0374
120	15331-51270	SEAT SPRING UPPER	2				0.001	0.0022
130	15331-51290	SEAT SPRING LOWER	2				0.001	0.0022
140	15261-51490	SHIM	1				0.01	0.022
150	15241-51060	RACK CONTROL	1				0.03	0.066
160	15331-51380	SLEEVE CONTROL	2				0.012	0.0264
170	15241-51320	SCREW HOLLOW	1				0.034	0.0748
180	15331-96650	GASKET	2				0.001	0.0022
190	14107-51352	SCREW	1				0.01	0.022
200	14111-53380	GASKET	1				0.001	0.0022
210	15331-51480	COLLAR	1				0.005	0.011
220	04512-50060	WASHER SPRING	1				0	0
230	15241-51390	PLATE ADJUSTING	1				0.01	0.022
240	15331-91010	BOLT	1				0.034	0.0748

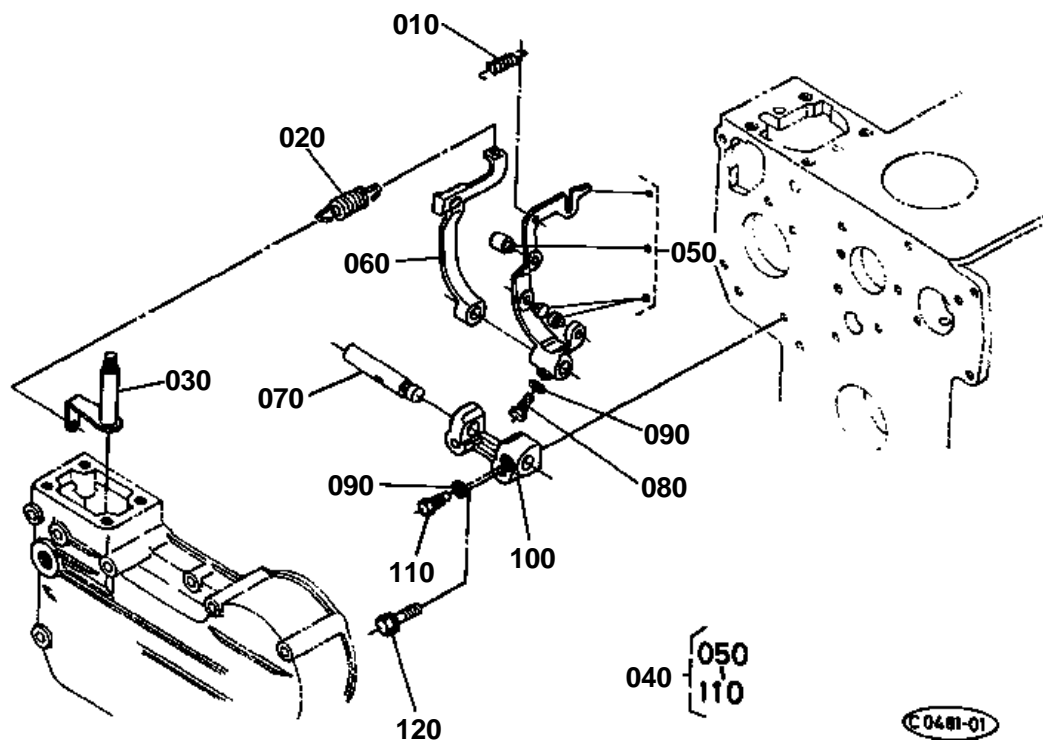




## SPEED CONTROL PLATE

↔ Interchangeable; ≠ not interchangeable; ← new for old; → old for new

REF.No	Part No.	Description	Q'ty	S.No.	I/C	REMARKS	Weight (kgf)	Weight (lb)
010	15261-54090	ASSY APPARATUS I/D.	1				0.027	0.0594
020	15261-54100	ASSY BOLT ADJUSTING	1				0.008	0.0176
030	15261-92020	NUT	1				0.004	0.0088
040	15261-92330	NUT CAP	1				0.01	0.022
050	15021-33660	GASKET	2				0.001	0.0022
060	15261-54270	CAP	1				0.002	0.0044
070	15381-54020	APPARATUS FUEL LIMIT	1				0.06	0.132
080	15381-54030	APPARATUS FUEL LIMIT	1				0.04	0.088
090	15261-54370	NUT LOCK	1				0.007	0.0154
100	15109-33660	GASKET	2				0.001	0.0022
110	15261-54220	NUT CAP	1				0.02	0.044
120	14301-54420	CAP	1				0.005	0.011
130	15371-57150	LEVER SPEED CONTROL	1				0.035	0.077
140	15261-95010	KEY FEATHER	1				0.001	0.0022
150	04811-00070	RING	1				0.001	0.0022
160	04013-50060	WASHER PLAIN	1				0	0
170	02012-50060	NUT	2				0	0
180	15261-57380	DISK FRICTION	1				0	0
190	15261-57110	PLATE SPEED CONTROL	1				0.06	0.132
200	15261-57210	GASKET	1				0	0
210	01023-50620	BOLT	4				0.006	0.0132

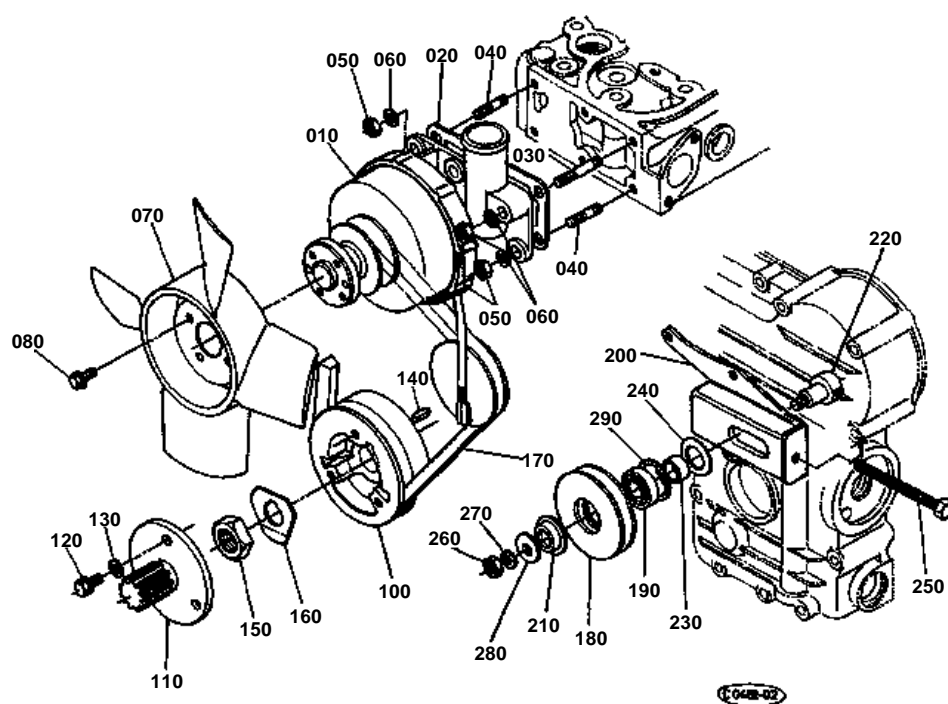




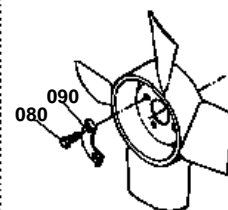
## GOVERNOR

↔ Interchangeable; ≠ not interchangeable; ← new for old; → old for new

REF.No	Part No.	Description	Q'ty	S.No.	I/C	REMARKS	Weight (kgf)	Weight (lb)
010	15221-56480	SPRING START	1				0.008	0.0176
020	15381-56410	SPRING GOVERNOR	1				0.006	0.0132
030	15261-56020	COMP.LEVER GOVERNOR	1				0.026	0.0572
040	15381-56050	ASSY LEVER FORK	1				0.254	0.5588
050	15381-56040	COMP.LEVER FORK	1				0.114	0.2508
060	15261-56130	LEVER FORK	1				0.063	0.1386
070	15261-56150	SHAFT FORK LEVER	1				0.032	0.0704
080	01053-50516	BOLT	1				0.003	0.0066
090	04512-50050	WASHER SPRING	2				0	0
100	15261-56230	HOLDER FORK LEVER	1				0.038	0.0836
110	15261-66410	BOLT	1				0.003	0.0066
120	01023-50628	BOLT	2				0.015	0.033



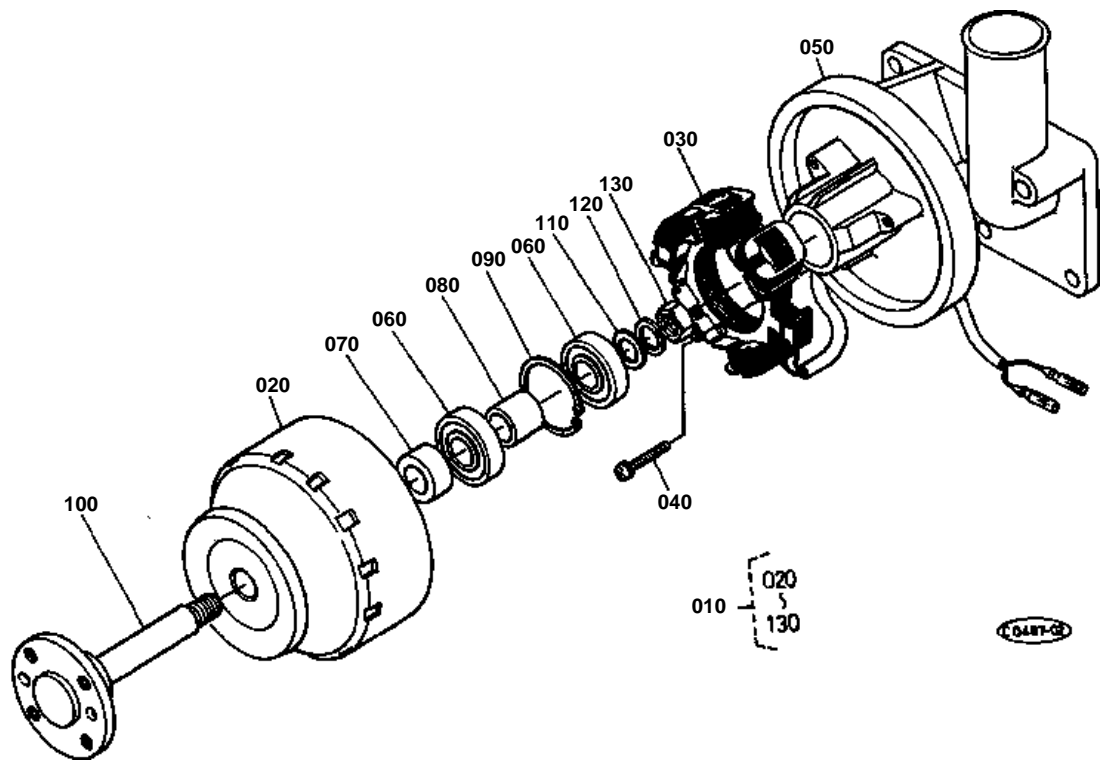
080 01053-50610  
090 15131-7423-0





↔ Interchangeable; ≠ not interchangeable; ← new for old; → old for new

REF.No	Part No.	Description	Q'ty	S.No.	I/C	REMARKS	Weight (kgf)	Weight (lb)
010	15973-64010	ASSY DYNAMO	1			REFER TO L.No.0C07-L0 FOR COMPONENTS	1.66	3.652
020	15261-72920	GASKET WATER FLANGE	1				0	0
030	01513-50645	STUD	1				0.011	0.0242
040	01513-50616	STUD	5				0.004	0.0088
050	02056-50060	NUT	6				0.002	0.0044
060	04512-50060	WASHER SPRING	5				0	0
070	15673-74110	FAN	1				0.3	0.66
080	01053-50610	BOLT	4	≤577012			0.004	0.0088
080	01754-50610	BOLT FLANGE	4	≥577013	≠		0.006	0.0132
090	15131-74230	WASHER FAN	2	≤577012			0.005	0.011
100	15263-74280	PULLEY FAN DRIVE	1				0.85	1.87
110	66704-88530	FLANGE PTO	1				0.4	0.88
120	01123-50825	BOLT	3				0.013	0.0286
130	04013-50080	WASHER PLAIN	3				0	0
140	05712-00515	KEY FEATHER	1				0.003	0.0066
150	15261-23360	NUT CRANKSHAFT	1				0.034	0.0748
160	15372-23380	WASHER CRANKSHAFT	1				0.007	0.0154
170	15231-72530	BELT FAN	1				0.066	0.1452
180	14301-74320	PULLEY TENSION	1				0	0
190	15271-74190	BEARING BALL	1				0.065	0.143
200	15371-74410	SUPPORT TEN.PULLEY	1				0.33	0.726
210	15231-74770	COVER TENSION PULLEY	1				0.004	0.0088
220	15231-74330	SHAFT TENSION PULLEY	1				0.093	0.2046
230	15261-74430	COLLAR	1				0.013	0.0286
240	14301-74780	COVER TENSION PULLEY	1				0.005	0.011
250	15371-74970	BOLT TENSION	1				0.032	0.0704
260	02018-50100	NUT	1				0.011	0.0242
270	04512-50100	WASHER SPRING	1				0	0
280	04013-50100	WASHER PLAIN	1				0	0
290	04611-00400	CIR-CLIP INTERNAL	1				0.005	0.011





REF.No	Part No.	Description	Q'ty	S.No.	I/C	REMARKS	Weight (kgf)	Weight (lb)
010	15973-64010	ASSY DYNAMO	1				1.66	3.652
020	15372-64040	ROTOR	1				0.95	2.09
030	15973-64290	ASSY STATOR	1				0.3	0.66
040	15261-93010	SCREW ROUND HEAD	2				0.003	0.0066
050	15372-64362	BASE STATOR	1				0.4	0.88
060	15531-74180	BEARING BALL	2				0.04	0.088
070	15261-64140	COLLAR	1				0.025	0.055
080	15261-64150	COLLAR	1				0.02	0.044
090	15261-95470	CIR-CLIP INTERNAL	1				0.002	0.0044
100	15372-74140	SHAFT FAN	1				0.22	0.484
110	15261-94020	WASHER PLAIN	1				0.007	0.0154
120	15261-94070	WASHER SPRING	1				0.003	0.0066
130	15261-92030	NUT	1				0.01	0.022