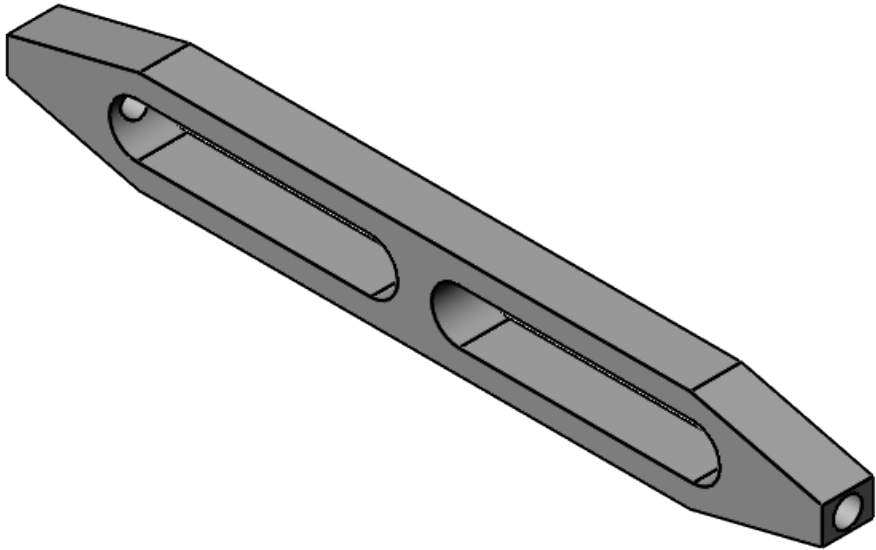
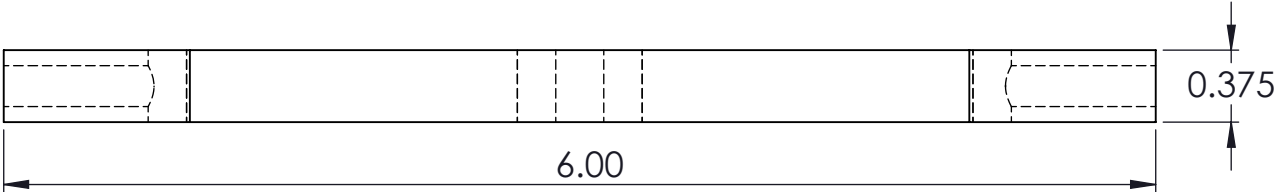
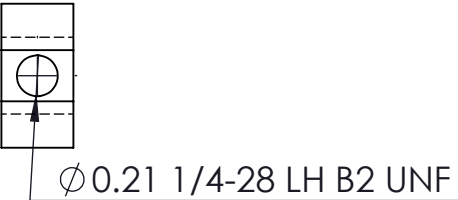
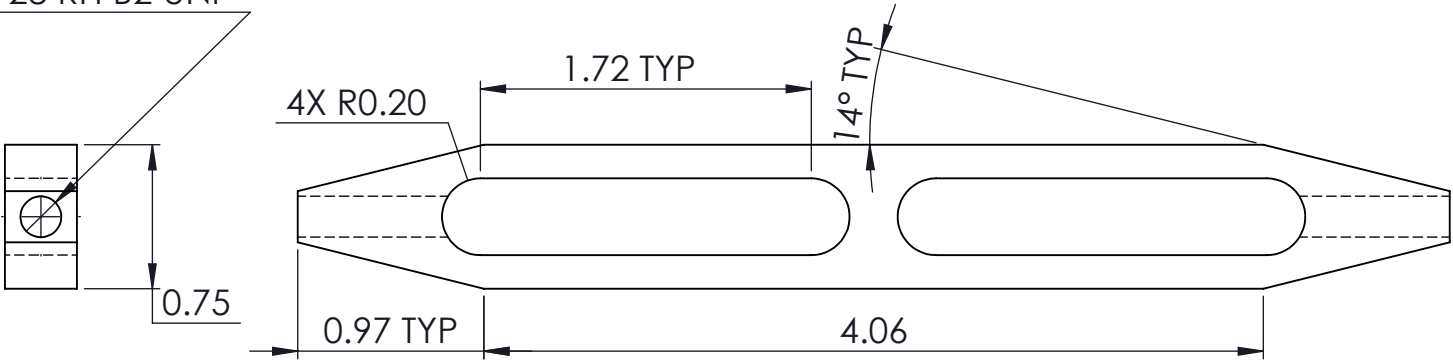


REVISIONS				
ZONE	REV.	DESCRIPTION	DATE	APPROVED



Ø0.21 1/4-28 RH B2 UNF



\* ALL THREADS TO BE FORMED  
MATERIAL IS 304 STAINLESS STEEL

\*\* BLANK IS .375 THICK X .75 WIDE

CAPITAL AVIATION, INC. PROPRIETARY INFORMATION  THE INFORMATION CONTAINED IN THIS DOCUMENT IS CAPITAL AVIATION, INC. PROPRIETARY INFORMATION AND IS DISCLOSED IN CONFIDENCE. IT IS THE PROPERTY OF CAPITAL AVIATION AND SHALL NOT BE USED, DISCLOSED TO OTHERS OR REPRODUCED WITHOUT EXPRESS WRITTEN CONSENT OF CAPITAL AVIATION. IF CONSENT IS GIVEN FOR REPRODUCTION IN WHOLE OR PART, NOTICE AND THE NOTICE SET FORTH ON EACH PAGE IN THIS DOCUMENT SHALL APPEAR IN ANY SUCH REPRODUCTION IN WHOLE OR PART. THE INFORMATION CONTAINED IN THIS DOCUMENT MAY ALSO BE CONTROLLED BY UNITED STATES EXPORT LAWS. UNAUTHORIZED EXPORT OR RE-EXPORT IS PROHIBITED.	DWN BY M. AYERS05/17/2019		W.O. FOR QUOTE	
	CHECK T. LEWIS		REGISTRATION	
	APVD S. WEBBER		TITLE	
	RELEASE DATE		6 INCH TURNBUCKLE .25-28	
	RIVET CODE		AIRCRAFT	
SYMBOL		PART NUMBER		
		FAA CRS:		
		REV: I/R		
		SIZE B		
		DWG NO 19-19001		
		SCALE 1:1		
		SHEET 1 OF 1		