

GLOBAL TECHNICAL BULLETIN

Ref No: GTB2010004
Date: April 14, 2010

To: All Yanmar Marine Distributors and Dealers
Subject: Heat exchanger filler neck

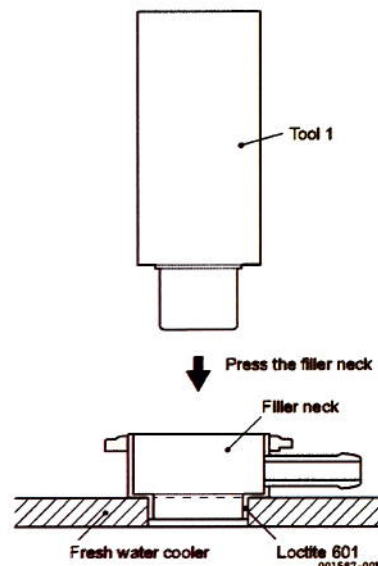
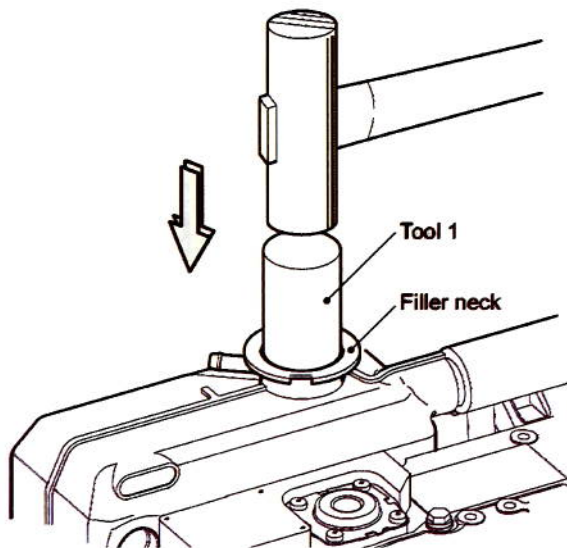
Yanmar wishes to inform you about the appropriate repair method of the heat-exchanger filler neck on specific engine models. If the filler-neck of the heat exchanger is subject for replacement, please follow the mentioned repair instruction. For repairs on the heat exchanger because of a leaking or damaged filler neck, Yanmar can no longer approve warranty-claims where the repair is executed other then described below. The filler-neck has been made available as a loose replacement part, available through the Yanmar Parts department for the following engine models;

- All YM models
 - All JH4 models
 - 4JH3-DTE
 - All JH5 models
 - All BY / BY2 models
- Filler neck Part No. 129673-44110
 - Copper tube Part No. 129673-44150

The necessary tools for this repair are described below and can easily be manufactured locally.

REPLACING FILLER NECK

- 1) Take out the copper tube inside the filler neck with striking a circumference with a driver and so on. When the filler neck is removed, remove it with being careful not to damage the fresh water cooler, and scrap it.
- 2) Clean both the new filler neck and the insertion part of fresh water cooler. Apply Loctite T7471 type activator or equivalent on both the surfaces and let it evaporate.
- 3) Apply Loctite 603 (improved 601) glue or equivalent on the new filler neck outside contour and press the filler neck into the fresh water cooler. Use a special tool. [Tool 1]



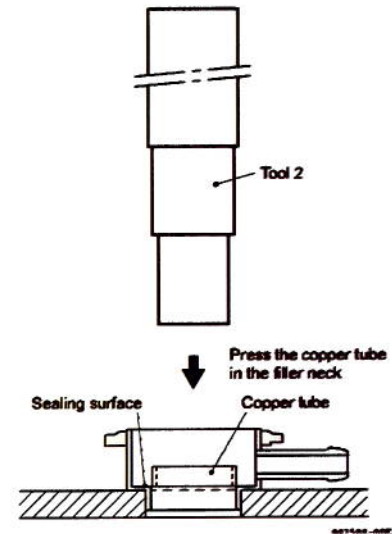


GLOBAL TECHNICAL BULLETIN

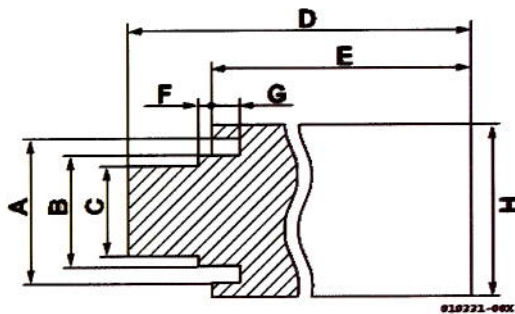
Ref No: GTB2010004
Date: April 14, 2010

- 4) To fix the filler neck on the fresh water cooler, press the small copper tube inside the filler neck with the special tool 2.

Note: The top of this tube should be under the sealing surface of the filler neck for the pressure cap.



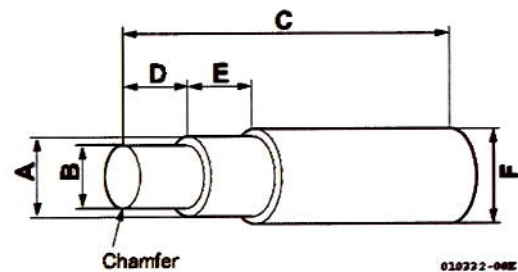
- 5) Description of Tool 1 and Tool 2:



mm

A	B	C	D	E	F	G	H
ø35.5	ø27.5	ø25	105	89	1	2	ø40

TOOL 1



mm

A	B	C	D	E	F
ø28	ø24.2	170	30	30	ø30

TOOL 2

P.J. Aarsen

Manager Global CS dept.
Yanmar Marine International