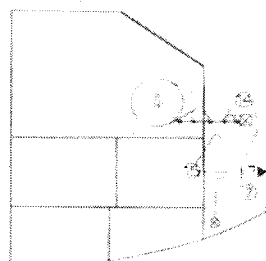
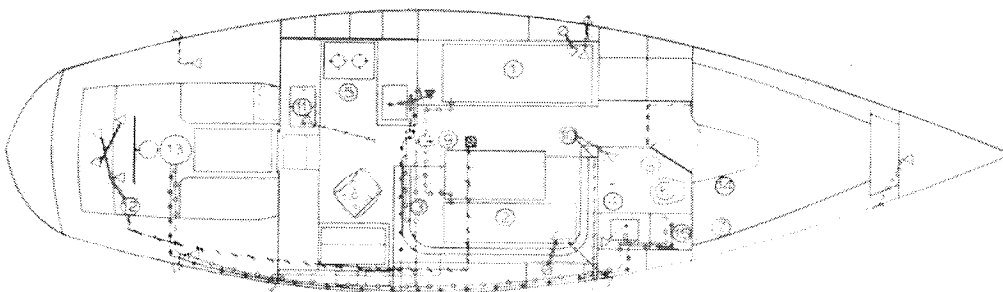


Hunter 36

PLUMBING DIAGRAM

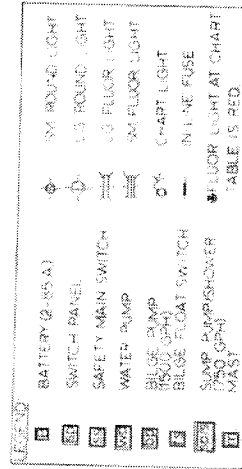


SUBSYSTEMS
FRESH WATER
WASTE DISPOSAL
DRAINS

3/4" BLK HOSE

LEGEND	HOSES & FITTINGS
① WATER TANK (PORT)	----- 5/8" WHITE HOSE (COLD WATER)
② WATER TANK (STBD)	----- 5/8" WHITE HOSE (HOT WATER)
③ WATER PUMP	----- 3/4" SHIELDVAC (W/CUFFS)
④ VANITY	----- 1/2" SHIELDVAC (W/CUFFS)
⑤ GALLEY	----- 1/2" SHIELDVAC (W/CUFFS)
⑥ HEAD	----- 1/2" SHIELDVAC (W/CUFFS)
⑦ HOLDING BAG	----- 1/2" SHIELDVAC (W/CUFFS)
⑧ SHOWER	----- 1/2" SHIELDVAC (W/CUFFS)
⑨ BILGE PUMP (ELEC)	----- 1/2" SHIELDVAC (W/CUFFS)
⑩ SUMP PUMP/SHOWER	----- 1/2" SHIELDVAC (W/CUFFS)
⑪ ICEBOX	----- 1/2" SHIELDVAC (W/CUFFS)
⑫ BILGE PUMP (MANUAL)	----- 1/2" SHIELDVAC (W/CUFFS)
⑬ WATER HEATER	----- 1/2" SHIELDVAC (W/CUFFS)
⑭ WASTE PUMP (MANUAL)	----- 1/2" SHIELDVAC (W/CUFFS)
⑮ 1-1/2" VENTED LOOP (BRZ)	----- 1/2" SHIELDVAC (W/CUFFS)
	▲ THRU HULL (PLASTIC)
	▲ THRU HULL (BRONZE)
	○ DECK PLATE (WATER)
	○ DECK PLATE (WASTE)
	○ SALT WATER PICKUP
	○ NAVY STRAINER
	○ WATER & WASTE VENTS
	○ GATE VALVE
	○ 3-WAY VALVE

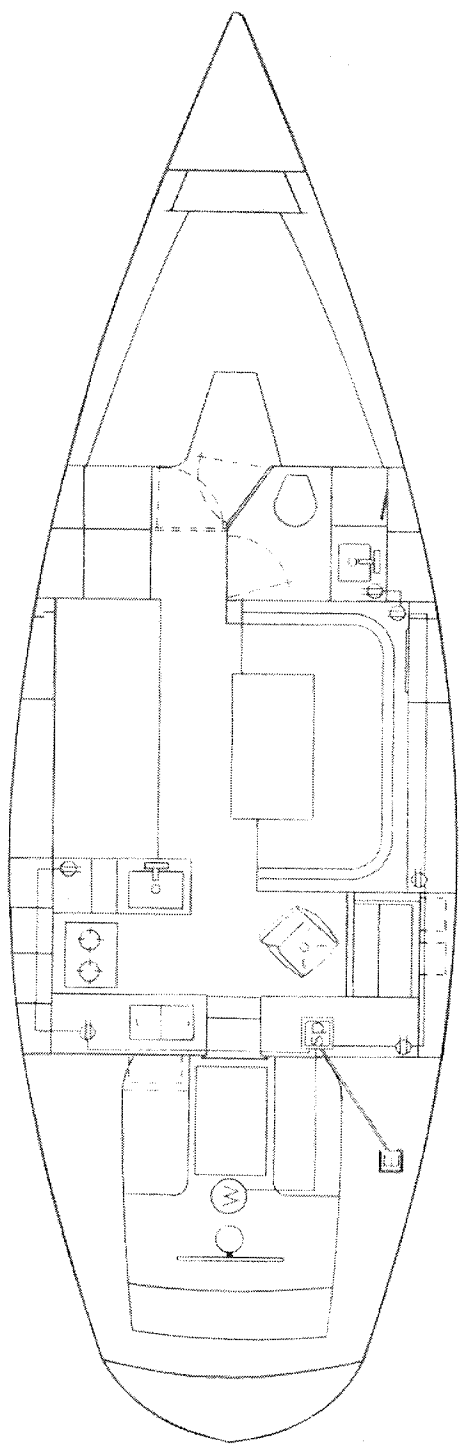
WIRING DIAGRAM (DC)



WIRING NOTES	COLOR	GAUGE	APPLICATION
	RED	4	BATTERY CABLE SAFETY MAIN SW
	WHITE	8	MAST GROUND
	RED	10	DC SUPPLY TO SWITCH PANEL
	RED	12	WATER PUMP
	BLUE	16	CABIN LIGHTS
	WHITE	16	RUNNING LIGHTS (BOW)
	GREEN	16	STEAMING LIGHTS
	RED	16	ANCHOR LIGHT
	BROWN	16	BILGE PUMP
	BROWN	16	BILGE FLOAT SWITCH
	YELLOW	16	SLAMP RUMPH-POWER
	ALL LEADS (EXCEPT FLOAT SWITCH AND MAST GROUND)		ARE RUN WITH A BLACK GROUND OF EQUAL GAUGE.
	THESE ARE CONNECTED TO A COMMON GROUND AT THE SWITCH PANEL WHICH IS GROUND TO THE ENGINE.		
	WITH A 10 GAUGE BLACK WIRE.		

Hunter 36

WIRING DIAGRAM (AC)



LEGEND	
	ELECTRICAL DECK PLATE
	SWITCH PANEL
	WATER HEATER
	HOT OUTLET
	10/3 MARINE POWER CABLE (AC SUPPLY)
	14/3 MARINE POWER CABLE (TO OUTLET/WATER HEATER)

